

**LANDSCAPE ARCHITECT'S NOTES:**

1. THERE SHALL BE NO SUBSTITUTIONS WITHOUT PERMISSION FROM THE OWNER OR LANDSCAPE ARCHITECT.
2. ALL PAVEMENT, ROCK AND DEBRIS REMNANTS ARE TO BE REMOVED FROM THE PLANTING AREAS. BACKFILL WITH CLEAN FRIABLE TOPSOIL, NATIVE TO THE AREA.
3. PLANT LIST AND QUANTITIES ARE TO BE VERIFIED BY CONTRACTOR AS PER PLAN.
4. DIG HOLES TWICE AS WIDE AS ROOT BALL OR CONTAINER TO ALLOW ROOTS TO SPREAD MORE EASILY.
5. REMOVE OR CUT ALL ROPES THAT COME IN CONTACT WITH THE TREE/SHRUB OR THE ROOT BALL. REMOVE PLASTIC CONTAINER PRIOR TO PLANTING AND CUT AWAY TOP OF ANY WIRE BASKET AFTER PLANTING.
6. THE TOP OF THE ROOT BALL SHOULD BE LEVEL WITH, OR SLIGHTLY HIGHER THAN THE SOIL LEVEL.
7. NOTE ON PLAN LOCATION OF MALE HOLLIES AND GIVE TO OWNER FOR FUTURE REFERENCE.

**MISCELLANEOUS MATERIALS:**

1. 3" FIELD BED RIVER GRAVEL (#6) MULCH OVER WEED FABRIC ON BANKED BED
2. 3" DEPTH HARDWOOD MULCH-MULCH SHOULD NEVER EXCEED 3"
3. LANDSCAPE EDGE TO BE 6"x6" TRENCH DUG OUT AND BACKFILLED WITH MULCH
4. GRASS AREAS WITH SLOPES <8% SHALL BE SEEDDED WITH A 50% KENTUCKY BLUEGRASS AND 50% REBEL III D FESCUE MIX, OR EQUAL. AREAS WITH SLOPES >8% SHALL BE SODDED WITH THE SAME.
5. 1"-2" ORGANIC MATERIAL SHALL BE PLACED OVER DISTURBED AREAS. IT IS TO BE WORKED IN TO A DEPTH OF 12" IN BED AREAS AND TO A DEPTH OF 6" IN LAWN AREAS.

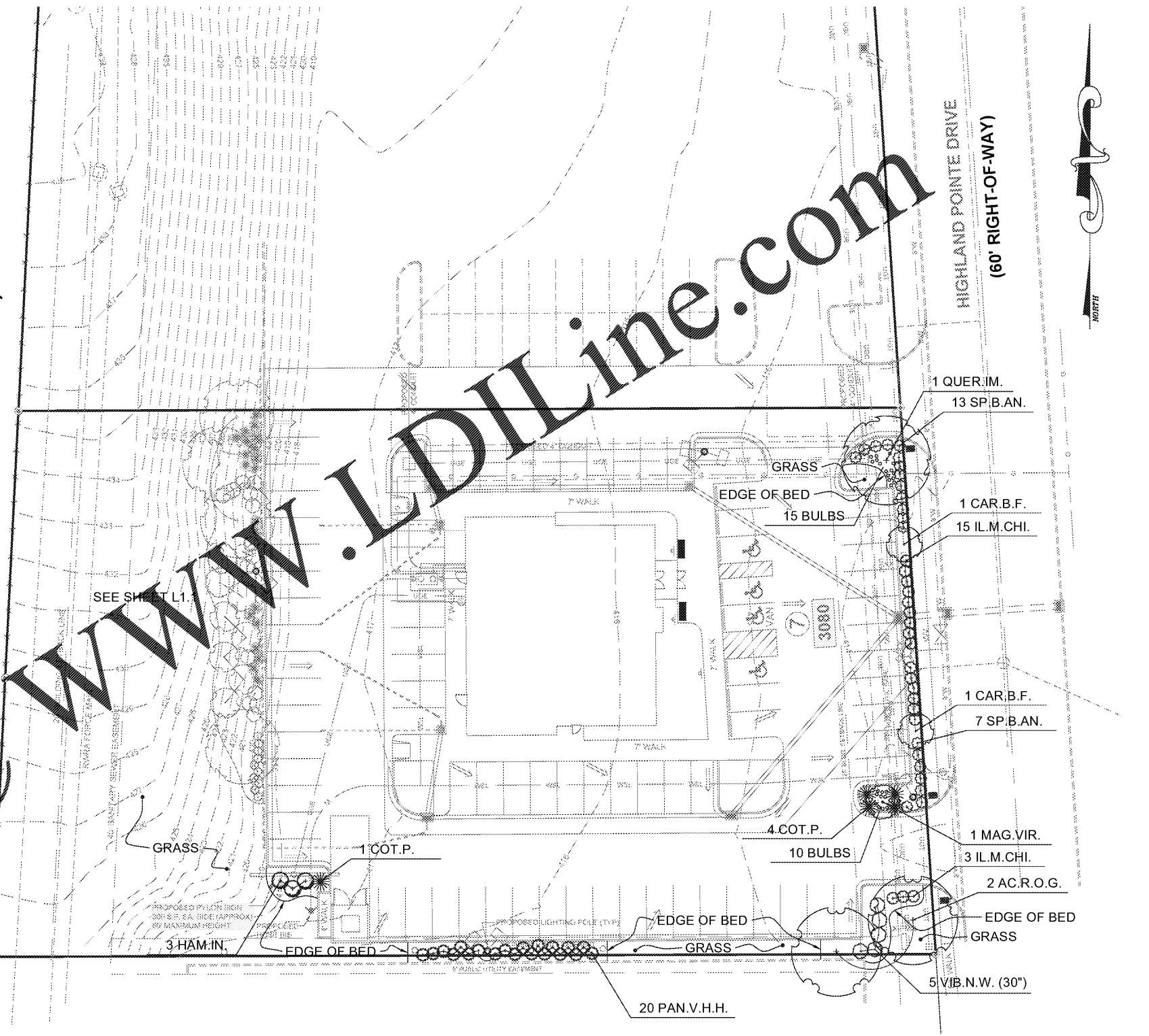
**PLANT LIST:**

KEY	SCIENTIFIC NAME	COMMON NAME	QTY.	SIZE	REMARK	SPACING (OC)	F.C.	PH
AC.R.O.G.	ACER RUBRUM 'OCTOBER GLORY'	OCTOBER GLORY RED MAPLE	2	3"	BB/SPEC	30'	O-R	N-AC.
AM.C.	AMELANCHIER CANADENSIS	SHADBLOW SERVICEBERRY	5	6"	BB/SPEC	10'		
CAR.B.F.	CARPINUS BETULUS 'FASTIGIATA'	PYRAMIDAL EUROPEAN HORNBEAM	2	1-1/2"	BB/SPEC	12'	Y	V.
CLAD.K.	CLADRASTIS KENTUCKEA	YELLOWWOOD	4	1-1/2"	BB/SPEC	15'	Y	V.
COR.F.C9	CORNUS FLORIDA 'CLOUD 9'	CLOUD 9 WHITE FLOW. DOGWOOD	1	1-1/2"	BB/SPEC	15'	R	AC.
GLED.S.	GLEDITSIA TRIACANTHOS VAR. INERMIS SHADMASTER	SHADMASTER HONEY LOCUST	3	3"	BB/SPEC	30'	Y	AL.
MAG.VIR.	MAGNOLIA VIRGINIANA	SWEET BAY MAGNOLIA	1	6"	BB/CONT	6'		AC.
MAL.PR.	MALUS 'PRAIRIFIRE'	PRAIRIFIRE CRABAPPLE	1	1-1/2"	BB/SPEC	15'		
NYS.SYL.	NYSSA SYLVATICA	BLACK GUM	1	1-1/2"	BB/CONT	25'	R	AC.
QUER.IM.	QUERCUS IMBRICARIA	SHINGLE OAK	1	3"	BB/SPEC	30'	Y-R	AC.
IL.C.G.L.	ILEX CRENATA 'GREEN LUSTER'	GREEN LUSTER HOLLY	22	24"	BB/CONT	3'		AC.
IL.M.CHI.	ILEX X MESSERVEAE 'CHINA GIRL'	CHINA GIRL HOLLY	15	24"	BB/CONT	3.5'		AC.
IL.M.CHI.	ILEX X MESSERVEAE 'CHINA BOY'	CHINA BOY HOLLY	3	24"	BB/CONT	3.5'		AC.
PRUN.CHI.	PRUNUS LAUROCERASUS 'CHESTNUT HILL'	CHESTNUT HILL LAUREL	2	24"	BB/CONT	3'		AC.
BER.T.N.	PERBERIS THUNBERGII 'ATROPUR NANA'	CRIMSON PYGMY BARBERRY	11	15"	BB/CONT	2'		V.
COT.P.	COTONEASTER HORIZONTALIS 'PERPUSILLUS'	PERPUSILLUS COTONEASTER	32	18"	BB/CONT	4'		
HAM.IN.	HAMAMELIS INTERMEDIA 'DIANE'	DIANE WITCH HAZEL	3	30"	BB/CONT	5'		
SP.B.AN.	SPIRAEA X BUNALDA 'ANTHONY WATERER'	ANTHONY WATERER SPIREA	20	24"	BB/CONT	3'	R	V.
SP.N.F.	SPIRAEA X 'NEON FLASH'	NEON FLASH SPIREA	8	18"	BB/CONT	3'	R	V.
VB.JUD.	VIBURNUM X JUDDII	JUDD VIBURNUM	1	24"	BB/CONT	4'	R	AC.
VB.N.W.	VIBURNUM NUDUM 'WINTERTHUR'	WINTERTHUR VIBURNUM	15	24"	BB/CONT	5'	R	AC.
VB.N.W.	VIBURNUM NUDUM 'WINTERTHUR'	WINTERTHUR VIBURNUM	5	30"	BB/CONT	5'	R	AC.
VB.T.A.	VIBURNUM TRILOBUM 'ALFREDO'	ALFR. COMPACT AMER. CRANBERRY	1	24"	BB/CONT	4'	R	V.
PAN.V.H.H.	PANICUM VIRGATUM 'HAENSE HERMS'	HAENSE HERMS RED SWITCH GRASS	30	#2	CONT	3'		
PAN.V.S.	PANICUM VIRGATUM 'SHENANDOAH'	SHENANDOAH SWITCH GRASS	16	#2	CONT	3'		
BULBS	NARCISSUS 'KING EDWARD'	KING EDWARD DAFFODILS	55					

**LEGEND:**

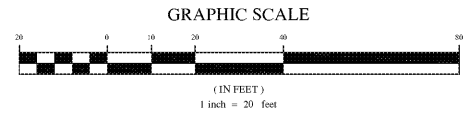
- BB BALLED & BURLAPPED
- BR BARE-ROOT
- CONT CONTAINER
- F.C. FALL COLOR
- S.S. SINGLE-STEMMED
- SPEC. SPECIMEN
- O ORANGE
- R RED
- Y YELLOW
- AC. ACID
- N. NEUTRAL
- V. VARIES
- PS PART-SUN
- PSH PART-SHADE
- S SUN
- SH SHADE

**WENDELL FORD EXPRESSWAY (US-60)**  
**(RIGHT-OF-WAY VARIES)**



**Order Plans**

**WWW.LDILLINE.COM**



**PRELIMINARY**

<b>OWNER/DEVELOPER</b> RIVER ROAD RESTAURANT, LLC 417 MAIN STREET NATCHEZ, MS 39120	REVISIONS				<b>LANDSCAPE PLAN</b>	<b>IHOP</b> 3080 HIGHLAND POINTE DRIVE	DATE: 05-06-2019	
	NO.	DATE	DESCRIPTION	BY			SCALE: 1"=20' JOB NO.: 19-5953 SHEET	
					L1.0			