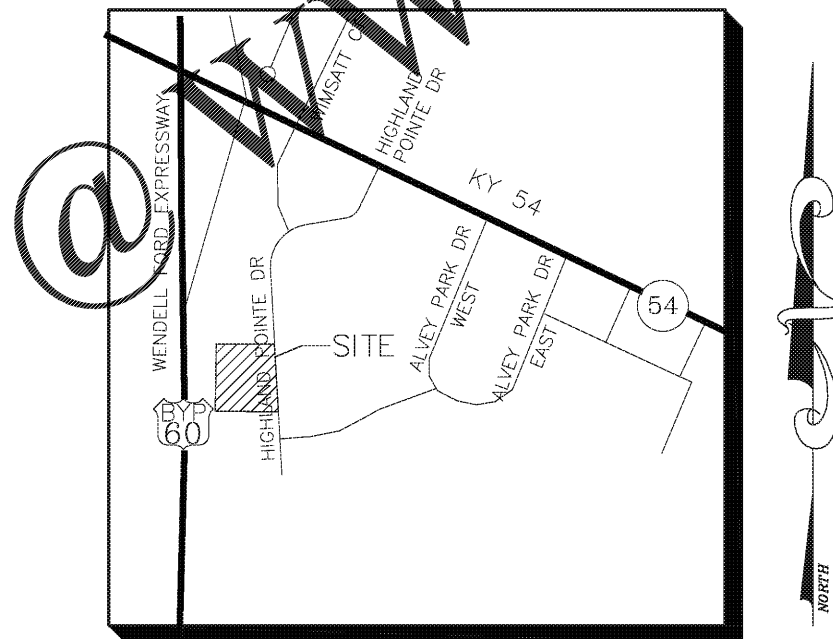


HIGHLAND POINTE LOT 7



CONSTRUCTION PLANS

3080 HIGHLAND POINTE DRIVE
OWENSBORO, KY 42303
DAVIESS COUNTY, KENTUCKY



VICINITY MAP

SHEET INDEX	
SHEET NO.	DESCRIPTION
C0.0	COVER SHEET
C1.0	TOPO PLAN
C2.0	SITE PLAN
C3.0	GRADING AND DRAINAGE PLAN
C3.1	ROOF DRAINAGE PLAN
C4.0	UTILITY PLAN
C4.1	LIGHTING PLAN
C5.0	PAVEMENT PLAN
L1.0 - L1.1	LANDSCAPING PLAN
L2.0	LANDSCAPING DETAILS
C7.0	EPSC
C8.0 - 8.1	DETAILS
SD1.0	DETAILS

Order Plans

PRELIMINARY

OWNER/DEVELOPER RIVER ROAD RESTAURANT, LLC 417 MAIN STREET NATCHEZ, MS 39120	REVISIONS				COVER SHEET	IHOP 3080 HIGHLAND POINTE DRIVE	DATE: 04-08-2019	
	NO.	DATE	DESCRIPTION	BY			SCALE: 1"=20' JOB NO.: 19-5953	
SHEET							C0.00	