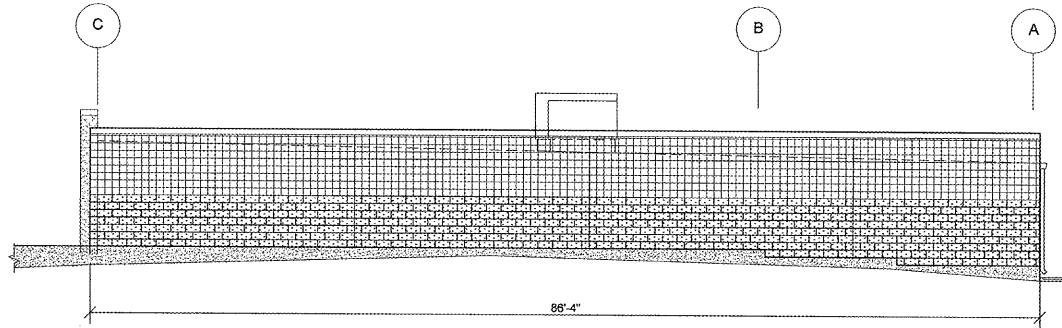


SIGN DIMENSIONS TO TOP OF BLOCKING ON METAL STUD. REFER TO SECTION 2/A3.1.

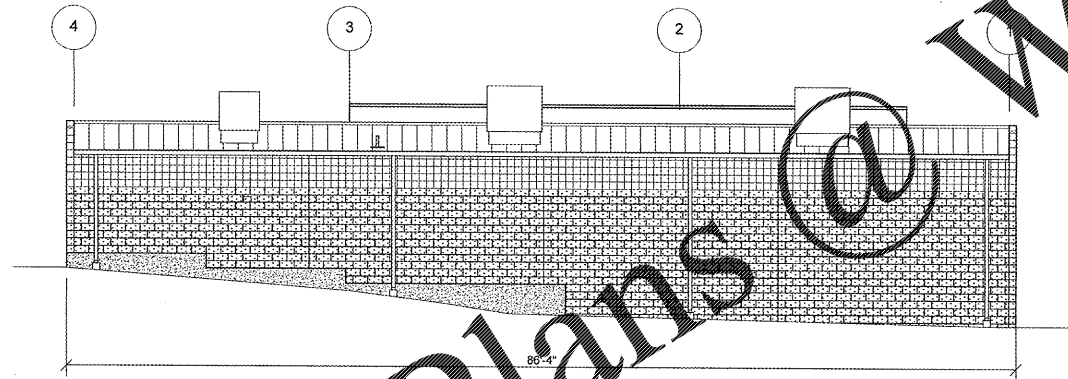
**1 FRONT EXTERIOR ELEVATION**

SG2.1 SCALE: 1/8" = 1'-0"



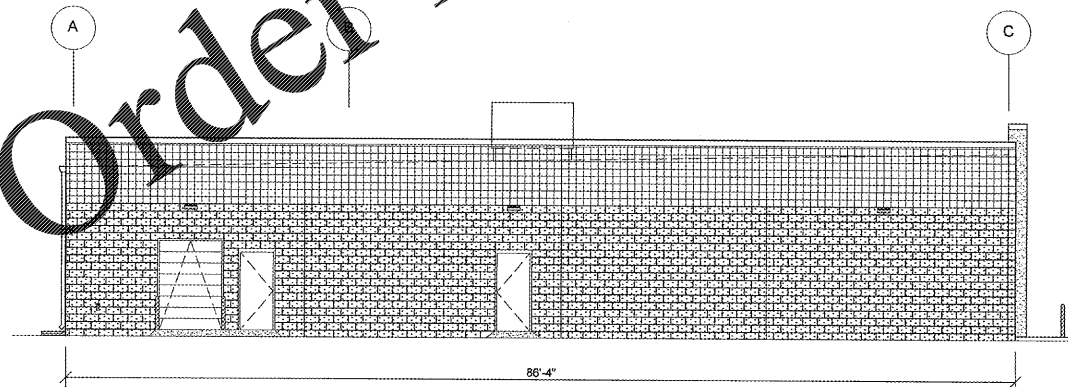
**2 RIGHT EXTERIOR ELEVATION**

SG2.1 SCALE: 1/8" = 1'-0"



**3 REAR EXTERIOR ELEVATION**

SG2.1 SCALE: 1/8" = 1'-0"



**4 LEFT EXTERIOR ELEVATION**

SG2.1 SCALE: 1/8" = 1'-0"

**BUILDING SIGN SCHEDULE**

**FRONT EXTERIOR ELEVATION:**  
 TYPE: OR 63' / 31' AP LINEAR  
 DETAIL: REFER TO 5/SG2.1

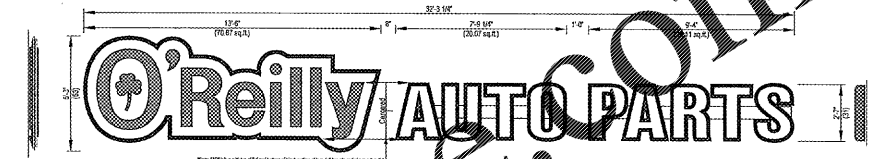
**RIGHT EXTERIOR ELEVATION:**  
 TYPE: NO SIGN  
 DETAIL:

**REAR EXTERIOR ELEVATION:**  
 TYPE: NO SIGN  
 DETAIL:

**LEFT EXTERIOR ELEVATION:**  
 TYPE: NO SIGN  
 DETAIL:

**GENERAL NOTES**

- A CONTACT OWNER'S OR TENANT'S DESIGNATED PROJECT ADMINISTRATOR FOR QUESTIONS OR CLARIFICATIONS.
- B BUILDING PERMANENT SIGNAGE OWNER FURNISHED AND INSTALLED, (REFER TO SCOPE OF WORK SCHEDULE). SIGNAGE GRAPHICS PROVIDED FOR REFERENCE ONLY (N.I.C.) AND CONTRACTOR'S COORDINATION WITH SPECIFIC PROJECT CONSTRUCTION CONDITIONS. CONTRACTOR TO PROVIDE BACKING AND ROUGH-IN ELECTRICAL AS REQUIRED FOR INSTALLATION. REFER TO A2.1 FOR EXTERIOR BUILDING FINISH.
- C REQUIRED GOVERNMENTAL PERMITS FOR PERMANENT TYPE SIGNAGE TO BE PROVIDED BY OWNER OR OTHERS (N.I.C.).



Side View  
 "O'Reilly"  
 Scale 1/4" = 1'-0"

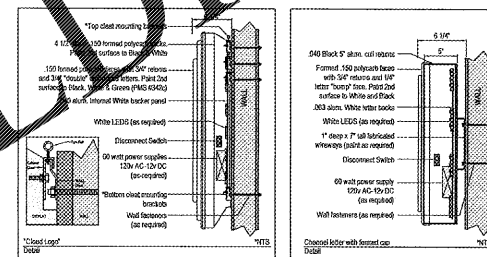
Front View  
 Scale 1/4" = 1'-0"

Part# 63/31-L-CldLogo&Chtrs-WFC  
 169 42 (Encompassed Rectangle)

\*"O'Reilly" Cloud Logo with "AP" channel letters 7" (H) x 2" (D) wireway, always pain: to: OAP RED  
 \*"O'Reilly" Cloud Logo formed polycarb with 2nd surface embossed with 2nd surface painted graphics. Paint match to: Green (PMS# 342c), Black and White.  
 \*"AP" to have formed carb caps with 1/4" letter caps. Black aluminum coil returns. 2nd surface Black and White paint. WHITE LED illumination.

**5 FRONT WALL SIGN ELEVATION**

SG2.1 SCALE: 1/4" = 1'-0"



Formed Cloud Logo with "AP" Formed Caps & Channel Returns  
 Part# 63/31-L-CldLogo&Chtrs-WFC

**6 FRONT WALL SIGN MOUNTING DETAILS**

SG2.1 SCALE: 1/4" = 1'-0"



O'Reilly Auto Parts  
 233 Patterson St.  
 Springfield, MO 65803

This original artwork is protected under Federal Copyright Law. Make no reproduction or other use without the written permission of O'Reilly Automotive Inc. Colors as shown may not accurately reproduce specific colors.

Formed Embossed Cloud Logo  
 AUTO PARTS Channel Letters  
 with Formed Embossed Caps  
 63/31-L-CldLogo&Chtrs-WFC

Order Plans @ WWW.LDLINE.COM

DESIGN BY OTHERS FOR REFERENCE ONLY

CRAIG A. SCHNEIDER, AIA  
 ARCHITECT  
 1736 East Sunning, Suite 417  
 Springfield, Missouri 65804  
 417.862.0558  
 Fax: 417.862.3265  
 e-mail: architect@esterschneider.com

PROJECT:  
 NEW O'REILLY AUTO PARTS STORE  
 OLD FRANKLIN TURNPIKE  
 ROCKY MOUNT, VA  
 BUILDING EXTERIOR SIGNAGE

O'Reilly AUTO PARTS  
 CORPORATE OFFICES  
 10000 N. MISSOURI  
 SPRINGFIELD, MISSOURI 65802  
 (417) 862-2674 TELEPHONE

COMM #	4252
DATE:	11-2-18
REVISION	
DATE:	

SG2.1