

RECEIVED
 OCT 01 2018
 THE ENGINEERING CENTER
 1000 S. MAIN ST.
 SPRINGFIELD, MO

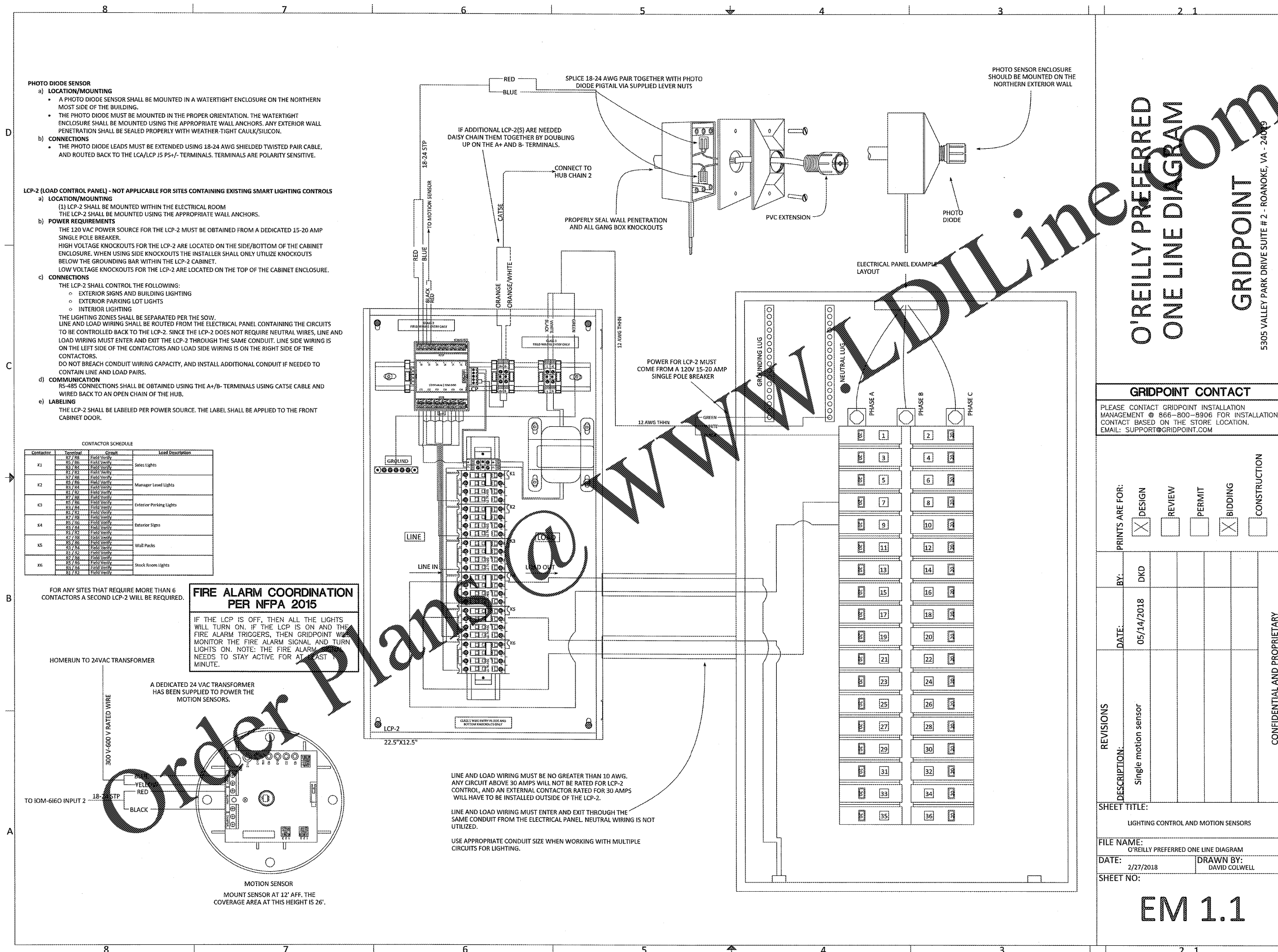


PHOTO DIODE SENSOR
 a) **LOCATION/MOUNTING**
 • A PHOTO DIODE SENSOR SHALL BE MOUNTED IN A WATERTIGHT ENCLOSURE ON THE NORTHERN MOST SIDE OF THE BUILDING.
 • THE PHOTO DIODE MUST BE MOUNTED IN THE PROPER ORIENTATION. THE WATERTIGHT ENCLOSURE SHALL BE MOUNTED USING THE APPROPRIATE WALL ANCHORS. ANY EXTERIOR WALL PENETRATION SHALL BE SEALED PROPERLY WITH WEATHER-TIGHT CAULK/SILICON.
 b) **CONNECTIONS**
 • THE PHOTO DIODE LEADS MUST BE EXTENDED USING 18-24 AWG SHIELDED TWISTED PAIR CABLE, AND ROUTED BACK TO THE LCA/LCP JS PS+/- TERMINALS. TERMINALS ARE POLARITY SENSITIVE.

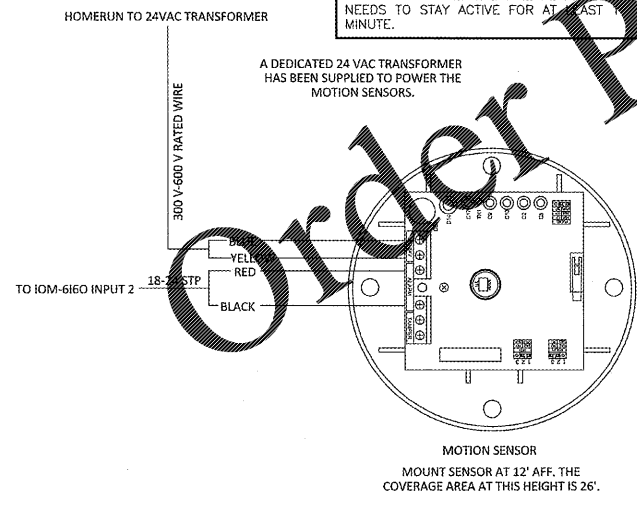
LCP-2 (LOAD CONTROL PANEL) - NOT APPLICABLE FOR SITES CONTAINING EXISTING SMART LIGHTING CONTROLS
 a) **LOCATION/MOUNTING**
 (1) LCP-2 SHALL BE MOUNTED WITHIN THE ELECTRICAL ROOM
 THE LCP-2 SHALL BE MOUNTED USING THE APPROPRIATE WALL ANCHORS.
 b) **POWER REQUIREMENTS**
 THE 120 VAC POWER SOURCE FOR THE LCP-2 MUST BE OBTAINED FROM A DEDICATED 15-20 AMP SINGLE POLE BREAKER.
 HIGH VOLTAGE KNOCKOUTS FOR THE LCP-2 ARE LOCATED ON THE SIDE/BOTTOM OF THE CABINET ENCLOSURE. WHEN USING SIDE KNOCKOUTS THE INSTALLER SHALL ONLY UTILIZE KNOCKOUTS BELOW THE GROUNDING BAR WITHIN THE LCP-2 CABINET.
 LOW VOLTAGE KNOCKOUTS FOR THE LCP-2 ARE LOCATED ON THE TOP OF THE CABINET ENCLOSURE.
 c) **CONNECTIONS**
 THE LCP-2 SHALL CONTROL THE FOLLOWING:
 • EXTERIOR SIGNS AND BUILDING LIGHTING
 • EXTERIOR PARKING LOT LIGHTS
 • INTERIOR LIGHTING
 THE LIGHTING ZONES SHALL BE SEPARATED PER THE SOW. LINE AND LOAD WIRING SHALL BE ROUTED FROM THE ELECTRICAL PANEL CONTAINING THE CIRCUITS TO BE CONTROLLED BACK TO THE LCP-2. SINCE THE LCP-2 DOES NOT REQUIRE NEUTRAL WIRES, LINE AND LOAD WIRING MUST ENTER AND EXIT THE LCP-2 THROUGH THE SAME CONDUIT. LINE SIDE WIRING IS ON THE LEFT SIDE OF THE CONTACTORS AND LOAD SIDE WIRING IS ON THE RIGHT SIDE OF THE CONTACTORS.
 DO NOT BREACH CONDUIT WIRING CAPACITY, AND INSTALL ADDITIONAL CONDUIT IF NEEDED TO CONTAIN LINE AND LOAD PAIRS.
 d) **COMMUNICATION**
 RS-485 CONNECTIONS SHALL BE OBTAINED USING THE A+/B- TERMINALS USING CAT5E CABLE AND WIRED BACK TO AN OPEN CHAIN OF THE HUB.
 e) **LABELING**
 THE LCP-2 SHALL BE LABELED PER POWER SOURCE. THE LABEL SHALL BE APPLIED TO THE FRONT CABINET DOOR.

CONTACTOR SCHEDULE

Contactor	Terminal	Circuit	Load Description
K1	87/88	Field Verify	Sales Lights
	85/86	Field Verify	
	83/84	Field Verify	
K2	87/88	Field Verify	Manager Level Lights
	85/86	Field Verify	
	83/84	Field Verify	
K3	87/88	Field Verify	Exterior Parking Lights
	85/86	Field Verify	
	83/84	Field Verify	
K4	87/88	Field Verify	Exterior Signs
	85/86	Field Verify	
	83/84	Field Verify	
K5	87/88	Field Verify	Wall Packs
	85/86	Field Verify	
	83/84	Field Verify	
K6	87/88	Field Verify	Stack Room Lights
	85/86	Field Verify	
	83/84	Field Verify	

FOR ANY SITES THAT REQUIRE MORE THAN 6 CONTACTORS A SECOND LCP-2 WILL BE REQUIRED.

FIRE ALARM COORDINATION PER NFPA 2015
 IF THE LCP IS OFF, THEN ALL THE LIGHTS WILL TURN ON. IF THE LCP IS ON AND THE FIRE ALARM TRIGGERS, THEN GRIDPOINT WILL MONITOR THE FIRE ALARM SIGNAL AND TURN LIGHTS ON. NOTE: THE FIRE ALARM NEEDS TO STAY ACTIVE FOR AT LEAST MINUTE.



LINE AND LOAD WIRING MUST BE NO GREATER THAN 10 AWG. ANY CIRCUIT ABOVE 30 AMPS WILL NOT BE RATED FOR LCP-2 CONTROL, AND AN EXTERNAL CONTACTOR RATED FOR 30 AMPS WILL HAVE TO BE INSTALLED OUTSIDE OF THE LCP-2.
 LINE AND LOAD WIRING MUST ENTER AND EXIT THROUGH THE SAME CONDUIT FROM THE ELECTRICAL PANEL. NEUTRAL WIRING IS NOT UTILIZED.
 USE APPROPRIATE CONDUIT SIZE WHEN WORKING WITH MULTIPLE CIRCUITS FOR LIGHTING.

O'REILLY PREFERRED ONE LINE DIAGRAM
GRIDPOINT
 5305 VALLEY PARK DRIVE SUITE # 2 - ROANOKE, VA - 24009

GRIDPOINT CONTACT
 PLEASE CONTACT GRIDPOINT INSTALLATION MANAGEMENT @ 866-800-8906 FOR INSTALLATION CONTACT BASED ON THE STORE LOCATION. EMAIL: SUPPORT@GRIDPOINT.COM

REVISIONS	DESCRIPTION:	Single motion sensor
	DATE:	05/14/2018
PRINTS ARE FOR:	DESIGN	<input checked="" type="checkbox"/>
	REVIEW	<input type="checkbox"/>
	PERMIT	<input type="checkbox"/>
	BIDDING	<input checked="" type="checkbox"/>
	CONSTRUCTION	<input type="checkbox"/>

SHEET TITLE:
 LIGHTING CONTROL AND MOTION SENSORS
FILE NAME:
 O'REILLY PREFERRED ONE LINE DIAGRAM
DATE: 2/27/2018 **DRAWN BY:** DAVID COLWELL
SHEET NO:

EM 1.1

PROJECT: NEW O'REILLY AUTO PARTS STORE
 OLD FRANKLIN TURNPIKE
 ROCKY MOUNT, VA
GRIDPOINT EMS

ARCHITECT: CRAIG A. SCHNEIDER, AIA
 ARCHITECT
 1736 East Sunshine, Suite 417
 Springfield, Missouri 65804
 417.962.0558
 417.962.9265
 Fax: 417.962.9265
 e-mail: architect@estefystudio.com

O'Reilly AUTO PARTS
 CORPORATE OFFICES:
 233 SOUTH PATTERSON
 SPRINGFIELD, MISSOURI 65802
 (417) 882-2674 TELEPHONE

FOR INFORMATIONAL USE ONLY

COMM # 4252
 DATE: 11-2-18
 REVISION DATE:

EM1.1