

LIGHT FIXTURE SCHEDULE														
ALL ITEMS LISTED ON THE "LIGHT FIXTURE SCHEDULE" WILL BE SUPPLIED BY THE OWNER (O'REILLY). ITEMS SHALL BE DIRECT ORDERED AND OR RELEASED FROM THE LISTED ELECTRICAL EQUIPMENT DISTRIBUTOR.				GRAYBAR ELECTRIC CO., INC. 11885 LACKLAND ROAD ST. LOUIS, MO 63146				GRAYBAR O'REILLY TEAM EMAIL: oreilly@graybar.com TOLL FREE: (314) 573-2080						
MARK	MFR.	CATALOG NUMBER	SUPPLY VOLTAGE	FINISH	MOUNTING				LAMPS		WATTAGE	DESCRIPTION OF ACCESSORIES	NOTES	
					LAY-IN	RECESSED SURFACE WALL	SURF. CEILING	OTHER	TYPE	QUANTITY				
LED DIMMABLE LIGHTS - ALL INDOOR LIGHT FIXTURES SHALL HAVE DISCONNECTING MEANS TO COMPLY WITH NEC 410.130(G)														
A	LSI	SDL8 LED 80L FL UNV DM1 40 BOCRI OR NO SUBSTITUTIONS	120	WHITE		X					62	GRID HANGER (2 PER FIXTURE)	GRID HANGER (648480) (CEILING GRID ONLY), 0-10 VOLT DIMMING DRIVER STANDARD	
B	LSI	SDL4 LED 40L FL UNV DM1 40 BOCRI OR NO SUBSTITUTIONS	120	WHITE		X					30	GRID HANGER (2 PER FIXTURE)	GRID HANGER (648480) (CEILING GRID ONLY), 0-10 VOLT DIMMING DRIVER STANDARD	
C	LSI	SDL8 LED 80L FL UNV DM1 40 BOCRI OR NO SUBSTITUTIONS	120	WHITE			X				62	3' CHAIN HANGING KIT (1 PER FIXTURE)	HANG TOP OF FIXTURES AT 12" A.F.F WITH CHAIN HANGERS AND LENGTH OF CHAIN AS REQUIRED. OMIT GRID HANGER @ SAKRO CEILING	
D	LSI	SDL4 LED 40L FL UNV DM1 40 BOCRI OR NO SUBSTITUTIONS	120	WHITE			X				30	3' CHAIN HANGING KIT (1 PER FIXTURE)	HANG TOP OF FIXTURES AT 12" A.F.F WITH CHAIN HANGERS AND LENGTH OF CHAIN AS REQUIRED. 0-10 VOLT DIMMING, DRIVER STANDARD	
COMBINATION EXIT/EMERGENCY LIGHTS, EMERGENCY LIGHTS & EXTERIOR EMERGENCY REMOTE HEADS														
XR	COOPER	APCH7R (RED LETTERS)	120	WHITE		X	X			2	LED EXIT + (2) 3.6V	2.34	UNIVERSAL (WALL/CLG.) SINGLE PR DOUBLE FACE	BACKUP BATTERIES SHALL MAINTAIN 100% ILLUMINATION FOR A MINIMUM OF 90 MINUTES TO COMPLY WITH ARTICLE 700.12(A) OF THE N.E.C.
EM	COOPER	APEL	120	WHITE		X	X			2	3.6V	0.33	UNIVERSAL (WALL/CLG.)	BACKUP BATTERIES SHALL MAINTAIN 100% ILLUMINATION FOR A MINIMUM OF 90 MINUTES TO COMPLY WITH ARTICLE 700.12(A) OF THE N.E.C.
RH2	COOPER	APWR2	3.6V DC	WHITE		X				2	LED REMOTE HEAD	0		POWERED BY EMERGENCY "XR" FIXTURE.
LED EXTERIOR LIGHTS														
PC	INTERMATIC	PHOTOCCELL - #K4251	120	DARK BRONZE		X								MOUNT ABOVE WALL LIGHT LOCATED NEAR FREIGHT DOOR.
L	LSI	LAD6 41 LED 40 75 UE TR6R SFHAZ	120	CLEAR	X						45			RECESSED CAN.
WSX	SEE "SP1" SHEET FOR EXTERIOR LIGHTING WALL SCONCE FIXTURE SCHEDULE													
PX	SEE "SP1" SHEET FOR EXTERIOR LIGHTING POLE LIGHT FIXTURE SCHEDULE													

FIXTURE QUANTITY TO BE VERIFIED WITH LIGHTING PLAN QUANTITY

- ### LIGHTING - KEYNOTES
- MOUNT J-BOX INSIDE BUILDING & FLEX CONDUIT THRU WALL FOR POWER SUPPLY TO ILLUMINATED SIGN. EXACT LOCATIONS OF PENETRATIONS SHALL BE COORDINATED WITH SIGN COMPANY. PENETRATIONS SHALL BE BEHIND SIGNAGE. WATERPROOF W/ ELASTOMERIC POLYURETHANE (NO EXCEPTIONS) EQUAL TO "VULKEK" 118. WIRE TO SIGN WITH 15' OF WRING "WHIP" (SHALL BE FLEX OR TYPE MC CABLE). COIL AND "CABLE TIE" WRING "WHIP" TO WALL ABOVE CEILING. TYPICAL.
  - TO "OPEN" SIGN. SEE SHEET E2.
  - SEE "E" PANEL TRANSFER SWITCH SCHEDULE FOR POSITION OF CIRCUIT WIRES THROUGH TRANSFER SWITCH.
  - VIA LIGHTING CONTROL PANEL. SEE EM SHEET.
  - DIMMER LIGHTING CONTROL SWITCHES LOCATED ON OUTSIDE WALL OF OFFICE. SEE LIGHTING PLAN FOR QUANTITY. SEE DETAILS ON SHEET E4 FOR MORE INFORMATION.
  - SUSPEND 8'-0" A.F.F. THIS FIXTURE ONLY.
  - ROUTE THE OFFICE AND RESTROOMS LIGHTING CIRCUIT THRU THE LOCAL OCCUPANCY SENSORS AND DIRECTLY TO THE CIRCUIT BREAKER. THESE FIXTURES SHALL NOT BE SWITCHED BY THE LIGHTING CONTROL PANEL. SEE "E" PANEL TRANSFER SWITCH SCHEDULE FOR POSITION OF CIRCUIT WIRES THROUGH TRANSFER SWITCH.
  - REFER TO ARCHITECTURAL ELEVATIONS SHEETS SHOWING DIMENSIONED LOCATIONS. TYPICAL ALL WALL SCONCES.
  - SECURITY & EGRESS FIXTURE TO BE AS CLOSE AS POSSIBLE BUT NOT OVER THE OVERHEAD DOOR WHEN OPEN.
  - ROUTE SECURITY & EGRESS LIGHTING CIRCUIT DIRECTLY TO THE ELECTRICAL PANEL.

### AUTOMATIC LIGHTING CONTROL

COMPLIANCE WITH ENERGY CODE IS ACHIEVED BY:

- ONCE THE EMS HAS BEEN PROGRAMMED, THE INTERIOR AND EXTERIOR LIGHTS WILL TURN ON AND OFF USING THE FOLLOWING LOGIC: SEE EM SHEETS.  
INTERIOR WORK LIGHTS WILL TURN ON WITH FIRST MOTION IN THE STORE AND WILL TURN OFF 15 MINUTES AFTER LAST MOTION ONCE THE STORE IS CLOSED.  
INTERIOR SALES LIGHTS WILL TURN ON AT STORE OPENING AND TURN OFF 15 MINUTES AFTER STORE CLOSING.  
EXTERIOR SIGN LIGHTS WILL TURN ON WHEN ITS DARK ENOUGH OUTSIDE ANYTIME DURING STORE HOURS, AND WILL TURN OFF AT STORE CLOSING.  
EXTERIOR SITE LIGHTS WILL TURN ON WHEN IT IS DARK ENOUGH OUTSIDE AND IT IS WITHIN STORE HOURS OR THERE IS MOTION IN THE STORE. THEY WILL TURN OFF 30 MINUTES AFTER LAST MOTION ONCE THE STORE IS CLOSED.  
FOR NEW CONSTRUCTION LOCATIONS ONLY, THERE IS A TEMPORARY PROGRAM TO KEEP SIGN AND SALES LIGHTS ON UNTIL MIDNIGHT RATHER THAN THE TIMES INDICATED ABOVE. ONLY WILL DISABLE THIS PROGRAM ONE.
- RESTROOMS AND OFFICES: ALL LIGHTING IN THESE AREAS ARE CONTROLLED BY OCCUPANT-SENSING DEVICES.

### INTERIOR LIGHTING ZONES

ALL INTERIOR LIGHTING WITHIN AREA "A" SHALL BE CONSIDERED "WORK" ZONE (ON ONLY WHEN STORE IS OPEN FOR BUSINESS).  
INTERIOR LIGHTING WITH PARTS AREA "B", PARTS AREA "C", SHOWS, OFFICE, AND BREAK AREA SHALL BE CONSIDERED "WORK" ZONES (ON WHENEVER THERE IS MOTION IN THE STORE IS OPEN).



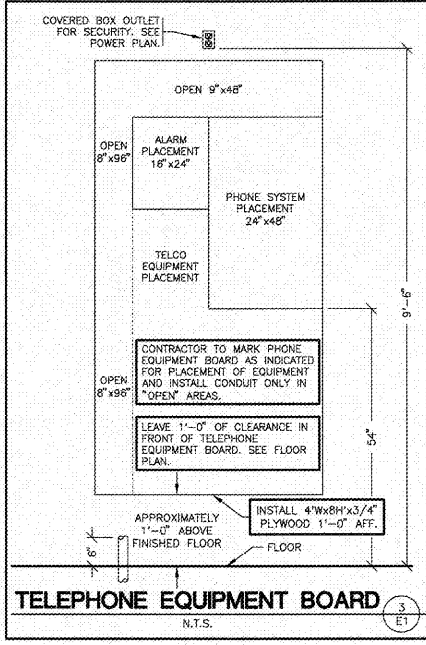
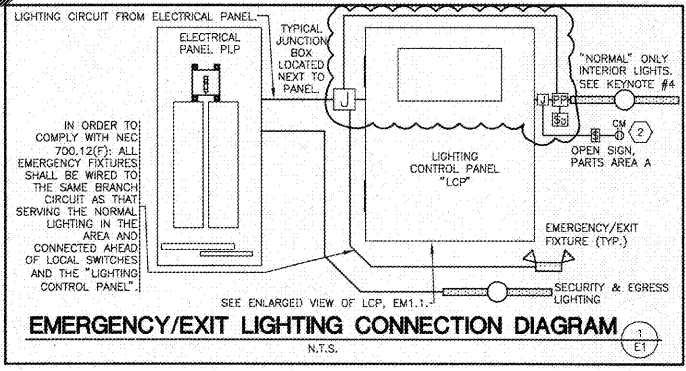
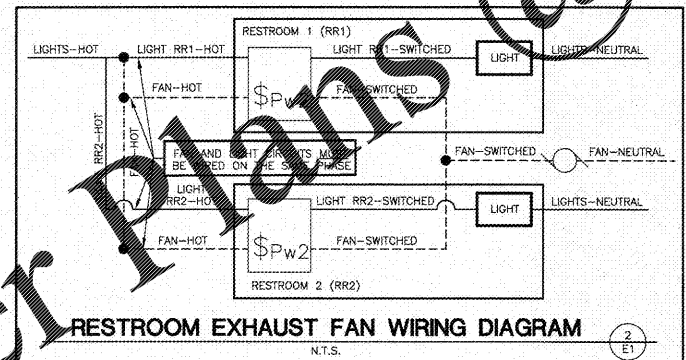
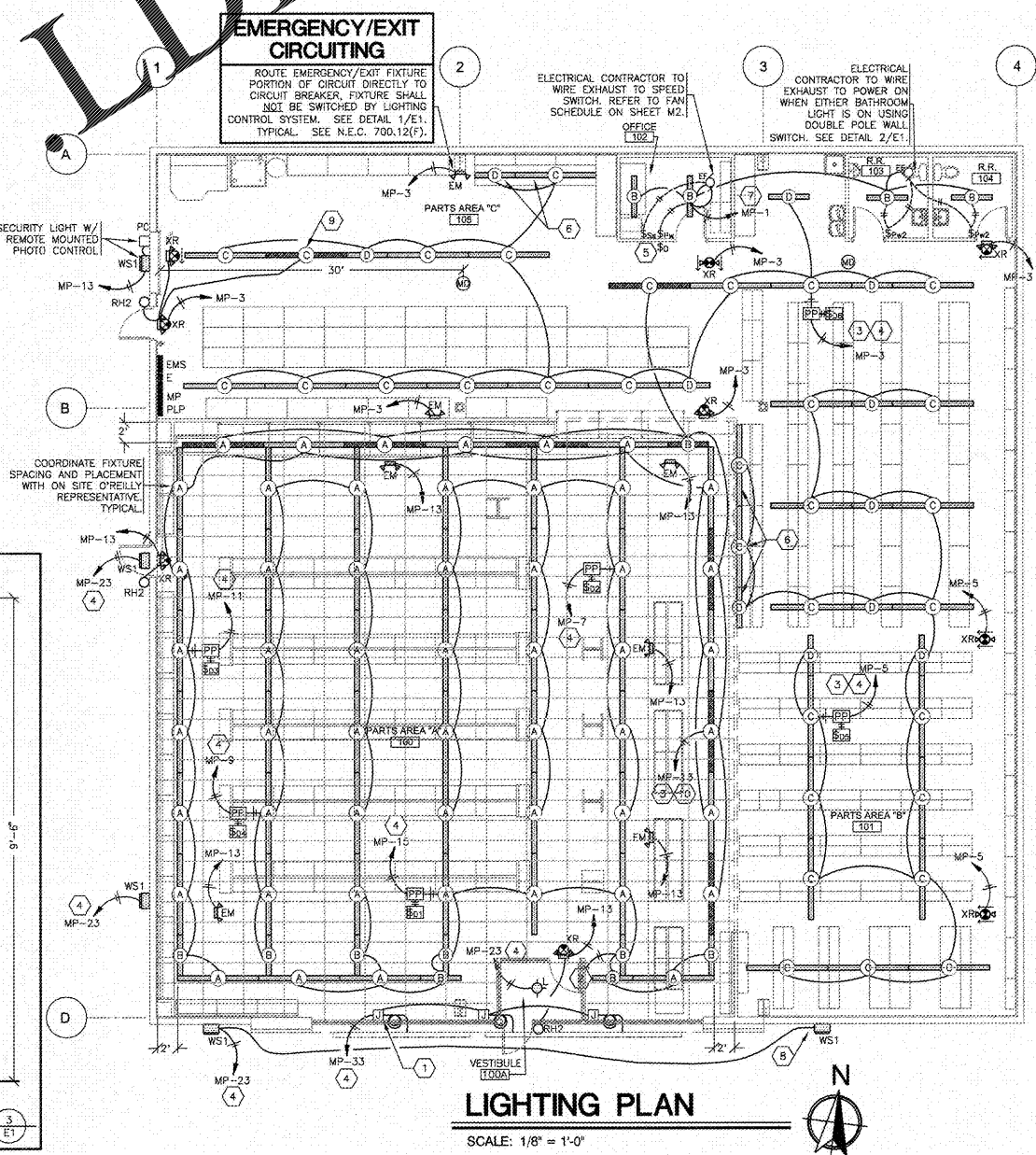
**CRAIG A. SCHNEIDER, AIA**  
ARCHITECT  
1736 East Sunshine, Suite 417  
Springfield, Missouri 65802  
Tel: 417.862.9265  
Fax: 417.862.9265  
e-mail: arch@esteryscneider.com

### EMERGENCY/EXIT LIGHTING

PLACE EXIT SIGNS HIGH ENOUGH TO BE SEEN ABOVE ALL MERCHANDISE WITH THE FOLLOWING LIMITATION: THE MAXIMUM HEIGHT FOR AN EXIT LIGHT ASSOCIATED WITH A SPECIFIC OPENING (I.E. MOUNTED OVER A DOOR OR OPENING) SHALL BE NO GREATER THAN THE CODE ALLOWED 6'-8" ABOVE THE TOP EDGE OF THE DOOR OR OPENING.

### CONDUIT REQUIREMENTS

ALL WIRING SHALL BE IN CONDUIT, EXCEPT AT MC-CABLE WHICH MAY BE SUBSTITUTED ONLY AS FOLLOWS:  
A. MC-CABLE (MAXIMUM CABLE LENGTH OF 100') MAY BE INSTALLED ONLY FOR BRANCH CIRCUIT WIRING TO LIGHT FIXTURES.  
B. MC-CABLE (MAXIMUM CABLE LENGTHS SHOWN ON DETAIL 2/E2) MAY BE INSTALLED ONLY ABOVE SLAB AND ONLY AT LOCATIONS INDICATED ON THIS SHEET. SEE SHEET FOR FURTHER REQUIREMENTS.



Order Plans @ WWW.IDILLIN.COM

PROJECT:  
NEW O'REILLY AUTO PARTS STORE  
OLD FRANKLIN TURNPIKE  
ROCKY MOUNT, VA  
LIGHTING PLAN

**O'Reilly AUTO PARTS**  
CORPORATE OFFICES  
230 SOUTH BATTERSON  
SPRINGFIELD, MISSOURI 65802  
(417) 862-2674 TELEPHONE

COMM # 4252  
DATE: 11-2-18  
REVISION  
DATE: 4-4-19