



CRAIG A. SCHNEIDER, AIA
ARCHITECT
 1736 East Sunshine, Suite 417
 Springfield, Missouri 65804
 Tel: 417.862.3265
 Fax: 417.862.3265
 e-mail: architect@esterlyschneider.com

PROJECT:
NEW O'REILLY AUTO PARTS STORE
OLD FRANKLIN TURNPIKE
ROCKY MOUNT, VA
WALL SECTIONS

O'Reilly AUTO PARTS
 CORPORATE OFFICES
 233 SOUTH PATTERSON
 SPRINGFIELD, MISSOURI 65802
 (417) 862-2674 TELEPHONE

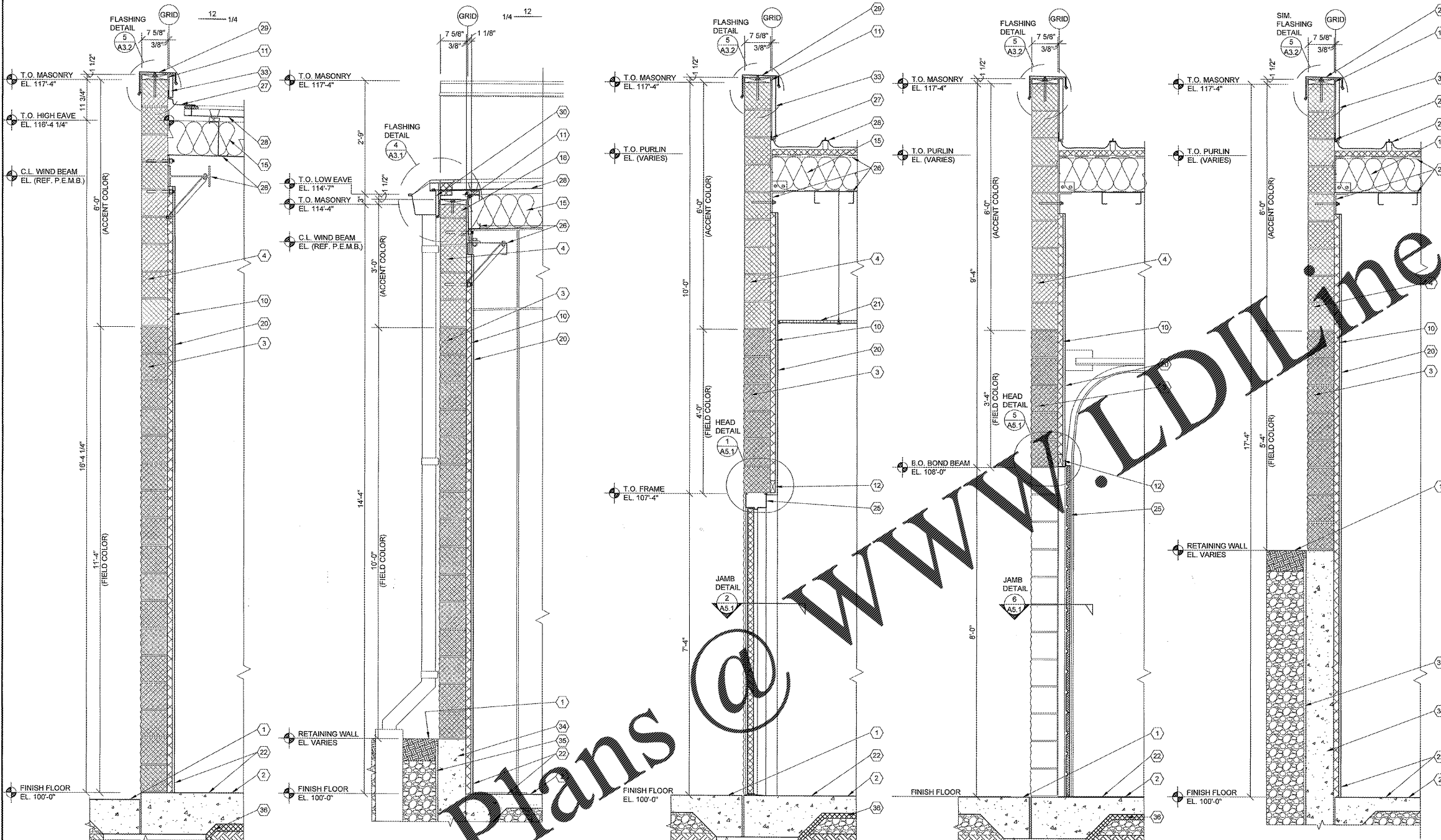
COMM #	4252
DATE:	11-2-18
REVISION	
DATE:	

GENERAL NOTES

- (A) REFER TO PROJECT MANUAL AND SCOPE OF WORK SCHEDULE FOR ADDITIONAL REQUIREMENTS.
- (B) REFER TO CIVIL, STRUCTURAL, MECHANICAL, ELECTRICAL, PLUMBING, AND PRE-ENGINEERED METAL BUILDING (P.E.M.B.) SHOP DRAWINGS FOR ADDITIONAL REQUIREMENTS.
- (C) REFER TO INTERIOR AND EXTERIOR FINISH SCHEDULES FOR MATERIAL TYPES, COLORS AND FINISHES.
- (D) DIMENSIONS ARE TO FACE OF CONCRETE, MASONRY, FRAMING, OR CENTER LINE OF STRUCTURE UNLESS OTHERWISE INDICATED.
- (E) REFER TO EXTERIOR ELEVATIONS FOR MASONRY CONTROL JOINT LOCATIONS.

KEY NOTES

- 1 FINISH LAYER PAVEMENT OR SIDEWALK SLOPE TO DRAIN AWAY FROM BUILDING. REFER TO CIVIL DRAWINGS.
- 2 CONCRETE FLOOR SLAB. REFER TO STRUCTURAL DRAWINGS.
- 3 SPLIT FACE CONCRETE MASONRY UNIT (CMU), (7 5/8" X 7 5/8" X 15 5/8") IN RUNNING BOND WITH HORIZONTAL REINFORCEMENT AT 18" O.C. REFER TO STRUCTURAL DRAWINGS FOR VERTICAL REINFORCEMENT REQUIREMENTS.
- 4 SMOOTH FACE SINGLE SCORE CONCRETE MASONRY UNIT (CMU), (7 5/8" X 7 5/8" X 15 5/8") IN RUNNING BOND WITH HORIZONTAL REINFORCEMENT AT 18" O.C. REFER TO STRUCTURAL DRAWINGS FOR VERTICAL REINFORCEMENT REQUIREMENTS.
- 5 1 1/4" (20 GAGE) DOUBLE LEG COLD FORM METAL RESILIENT CHANNEL FRAMING AT 24" O.C. HORIZONTAL.
- 6 8" COLD FORM METAL FRAMING, REFER TO STRUCTURAL DRAWINGS.
- 7 6" COLD FORM METAL FRAMING, REFER TO STRUCTURAL DRAWINGS.
- 8 6" (18 GA.) COLD FORM METAL STUD FRAMING AT 24" O.C. ATTACHED TO PRE-ENGINEERED METAL BUILDING STRUCTURAL FRAMING SYSTEM.
- 9 COLD FORM METAL STUD FRAMING CLIP, REFER TO STRUCTURAL DRAWINGS.
- 10 1 1/2" (25 GA.) COLD FORM METAL Z-FURRING FRAMING AT 24" O.C. AND POLYISOCYANURATE (R-8 MIN.) RIGID INSULATION BOARD WITH FOIL FACE VAPOR BARRIER.
- 11 FIRE TREATED 2X NAILER(S) CONTINUOUS. CUT TO FIT WALL WIDTH. ATTACHED TO METAL STUD FRAMING WITH #12 SCREWS AT 24" O.C. STAGGERED. ATTACHED TO CMU BOND BEAM WITH 1/2" DIA. ANCHORS AT 32" O.C.
- 12 FIRE TREATED 2X NAILER OR BLOCKING.
- 13 EXTERIOR INSULATION FINISH SYSTEM (EIFS) OVER RIGID INSULATION DRAINAGE BOARD IN THICKNESS INDICATED.
- 14 EXTERIOR INSULATION FINISH SYSTEM (EIFS) DRIP.
- 15 PRE-ENGINEERED METAL BUILDING ROOF INSULATION (R-36) LINER SYSTEM. (REFER TO SCOPE OF WORK SCHEDULE). VAPOR BARRIER OVER HIGH STRENGTH STEEL SUSPENSION STRAPS ATTACHED TO BOTTOM OF PRE-ENGINEERED METAL BUILDING ROOF PURLINS WITH (1) LAYER 8" (R-25) UN-FACED BATT INSULATION PARALLEL WITH ROOF PURLIN CAVITY AND (1) LAYER 3 1/2" (R-11) UN-FACED BATT INSULATION PERPENDICULAR OVER TOP OF ROOF PURLINS.
- 16 8" (R-19) BATT INSULATION WITH FOIL FACE VAPOR BARRIER.
- 17 FLEXIBLE FLASHING CONTINUOUS TO LAP OVER NAILERS AND DOWN BEHIND CONTINUOUS CLEATS ON BOTH SIDES. LAP JOINTS 8" MINIMUM AND MASTIC.
- 18 SMOOTH FACE SINGLE SCORE CONCRETE MASONRY UNIT (CMU), (7 5/8" X 7 5/8" X 15 5/8") IN RUNNING BOND WITH HORIZONTAL REINFORCEMENT AT 18" O.C. REFER TO STRUCTURAL DRAWINGS FOR VERTICAL REINFORCEMENT REQUIREMENTS.
- 19 5/8" EXTERIOR FIBERGLASS REINFORCED SHEATHING WITH CONTINUOUS WEATHER BARRIER. REFER TO STRUCTURAL DRAWINGS FOR ATTACHMENT REQUIREMENTS.
- 20 5/8" TYPE "X" GYPSUM BOARD. REFER TO INTERIOR WALL TYPES FOR ADDITIONAL REQUIREMENTS.
- 21 SUSPENDED ACOUSTICAL LAY - IN CEILING SYSTEM. REFER TO INTERIOR FINISH SCHEDULE FOR TYPES AND LOCATIONS.
- 22 FLOORING AND BASE. REFER TO INTERIOR FINISH SCHEDULE FOR TYPES AND LOCATIONS.
- 23 SEALANT WITH BACKER ROD (WHERE REQUIRED) TYPICAL AT OPENING PERIMETER JOINTS.
- 24 ALUMINUM WINDOW SYSTEM. REFER TO FLOOR PLAN AND WINDOW SCHEDULES FOR TYPES.
- 25 DOOR AND FRAME SYSTEM, REFER TO FLOOR PLAN AND SCHEDULES FOR TYPES.
- 26 PRE-ENGINEERED METAL BUILDING PRIMARY AND SECONDARY STRUCTURAL FRAMING SYSTEMS.
- 27 PRE-ENGINEERED METAL BUILDING TRANSITION SUPPORT PLATE ASSEMBLY.
- 28 PRE-ENGINEERED METAL BUILDING ROOF PANEL SYSTEM WITH THERMAL SPACER BLOCKS (R-5 MIN.).
- 29 PRE-ENGINEERED METAL BUILDING SHEET METAL FLASHING, COUNTER - FLASHING, CONTINUOUS CLEATS, DRIPS CLOSURES, TRANSITIONS, COPINGS AND ACCESSORIES AS REQUIRED.
- 30 PRE-ENGINEERED METAL BUILDING GUTTER AND DOWNSPOUT SYSTEM. REFER TO EXTERIOR ELEVATIONS FOR LOCATIONS. REFER TO P.E.M.B. SHOP DRAWINGS FOR SIZES.
- 31 SURFACE MOUNTED WALL SIGN, OWNER FURNISHED AND INSTALLED. (REFER TO SCOPE OF WORK SCHEDULE). PROVIDE BACKING AND ELECTRICAL ROUGH-IN, REFER TO ELECTRICAL DRAWINGS.
- 32 RECESSED LIGHTING FIXTURE, REFER TO ELECTRICAL DRAWINGS FOR TYPE AND LOCATION.
- 33 PRE-ENGINEERED METAL BUILDING CS BACK-UP PANEL. COLOR TO MATCH ROOF.
- 34 RETAINING WALL: REFER TO STRUCTURAL DRAWINGS.
- 35 SHEET MEMBRANE AND 6" DRAINAGE PIPE. SHEET MEMBRANE WATERPROOFING AND ASSOCIATED DRAINAGE BOARD REFER TO SPECIFICATIONS, CIVIL AND STRUCTURAL PLANS.
- 36 RIGID INSULATION BOARD WHERE INDICATED ON STRUCTURAL DRAWINGS.



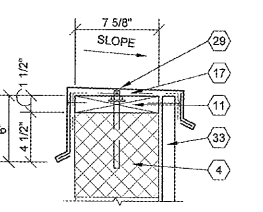
1 WALL SECTION
 A3.2 SCALE: 3/4" = 1'-0"

2 WALL SECTION
 A3.2 SCALE: 3/4" = 1'-0"

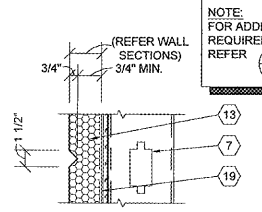
3 WALL SECTION
 A3.2 SCALE: 3/4" = 1'-0"

4 WALL SECTION
 A3.2 SCALE: 3/4" = 1'-0"

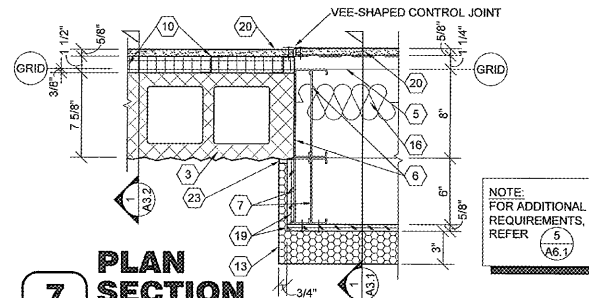
8 WALL SECTION
 A3.2 SCALE: 3/4" = 1'-0"



5 SECTION
 A3.2 SCALE: 1 1/2" = 1'-0"



6 SECTION
 A3.2 SCALE: 1 1/2" = 1'-0"



7 PLAN SECTION
 A3.2 SCALE: 1 1/2" = 1'-0"

NOTE: FOR TYPICAL EXTERIOR WALL CONSTRUCTION NOTATION, REFER TO DETAIL 2/A3.2

EAST WALL TO BE 1 HOUR FIRE RATED PER UL #9005. REFER TO DETAIL 2/A1.1.

NOTE: FOR ADDITIONAL REQUIREMENTS, REFER TO DETAIL 2/A3.1

NOTE: FOR ADDITIONAL REQUIREMENTS, REFER TO DETAIL 2/A3.1

Order Plans @ WWW.EDLINE.COM