

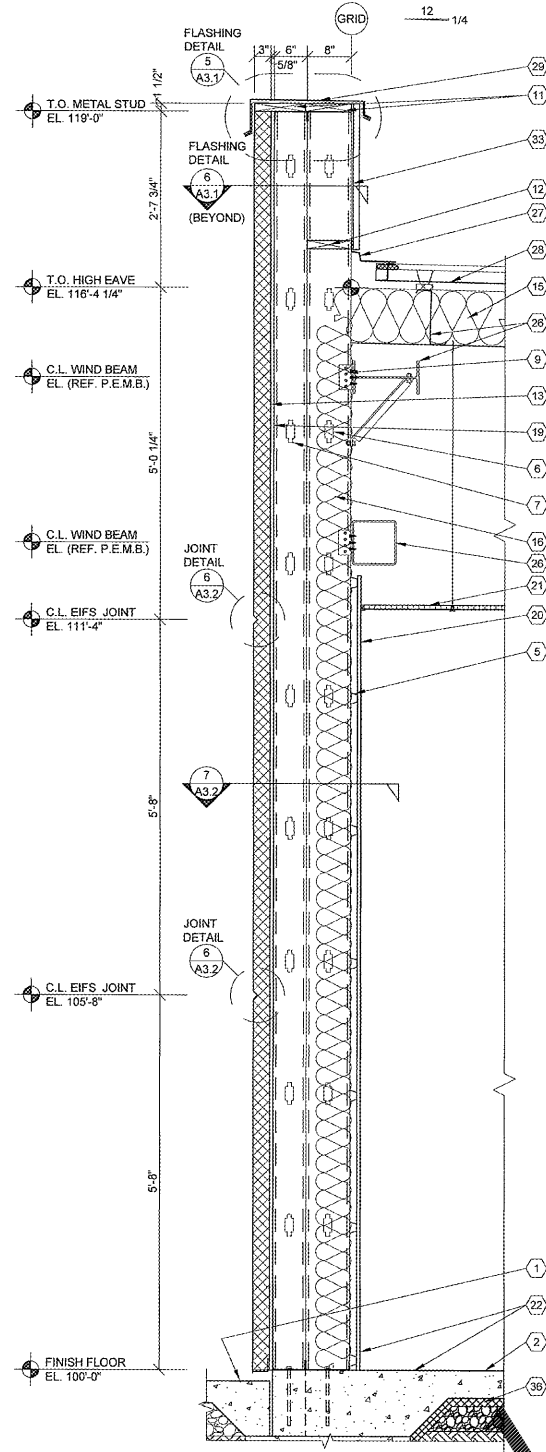
NOTE:
FOR TYPICAL EXTERIOR
WALL CONSTRUCTION
NOTATION, REFER
A3.1

GENERAL NOTES

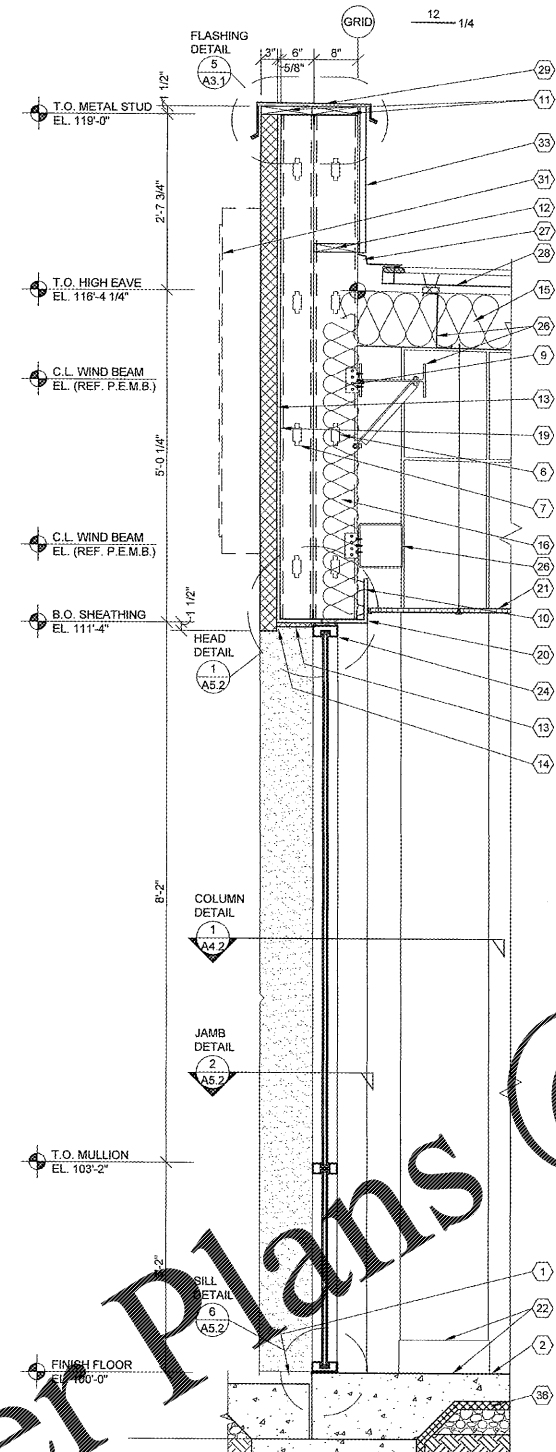
- (A) REFER TO PROJECT MANUAL AND SCOPE OF WORK SCHEDULE FOR ADDITIONAL REQUIREMENTS.
- (B) REFER TO CIVIL, STRUCTURAL, MECHANICAL, ELECTRICAL, PLUMBING, AND PRE-ENGINEERED METAL BUILDING (P.E.M.B.) SHOP DRAWINGS FOR ADDITIONAL REQUIREMENTS.
- (C) REFER TO INTERIOR AND EXTERIOR FINISH SCHEDULES FOR MATERIAL TYPES, COLORS AND FINISHES.
- (D) DIMENSIONS ARE TO FACE OF CONCRETE, MASONRY, FRAMING, OR CENTER LINE OF STRUCTURE UNLESS OTHERWISE INDICATED.
- (E) REFER TO EXTERIOR ELEVATIONS FOR MASONRY CONTROL JOINT LOCATIONS.

KEY NOTES

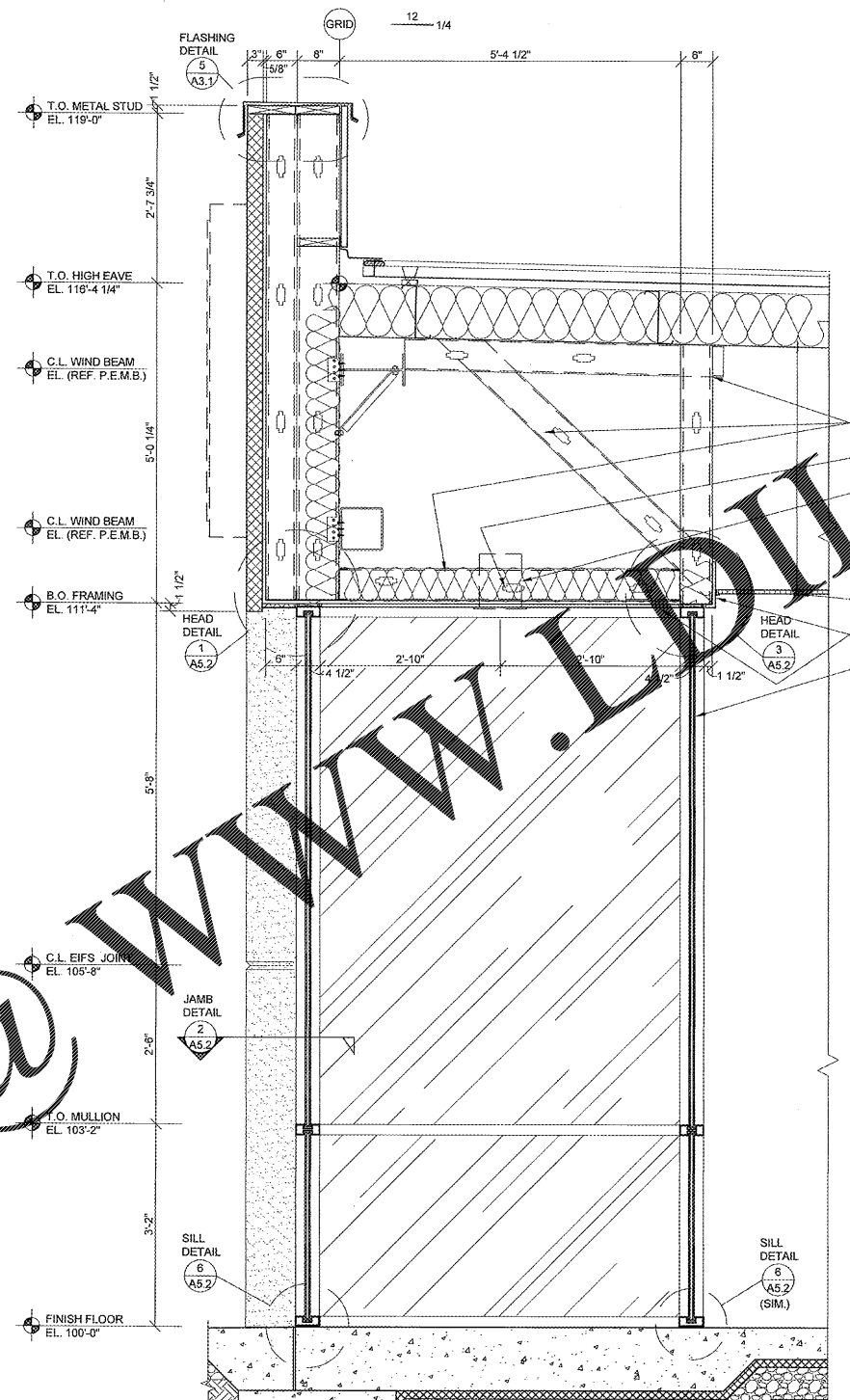
- 1 FINISH LAMP PAVEMENT OR SIDEWALK, SLOPE TO DRAIN AWAY FROM BUILDING. REFER TO CIVIL DRAWINGS.
- 2 CONCRETE FLOOR SLAB. REFER TO STRUCTURAL DRAWINGS.
- 3 SPLIT FACE CONCRETE MASONRY UNIT (CMU), (7 5/8" X 7 5/8" X 15 5/8") IN RUNNING BOND WITH HORIZONTAL REINFORCEMENT AT 16" O.C. REFER TO STRUCTURAL DRAWINGS FOR VERTICAL REINFORCEMENT REQUIREMENTS.
- 4 SMOOTH FACE SINGLE SCORE CONCRETE MASONRY UNIT (CMU), (7 5/8" X 7 5/8" X 15 5/8") IN RUNNING BOND WITH HORIZONTAL REINFORCEMENT AT 16" O.C. REFER TO STRUCTURAL DRAWINGS FOR VERTICAL REINFORCEMENT REQUIREMENTS.
- 5 1 1/2" (20 GAGE) DOUBLE LEG COLD FORM METAL RESILIENT CHANNEL FRAMING AT 24" O.C. HORIZONTAL.
- 6 8" COLD FORM METAL FRAMING. REFER TO STRUCTURAL DRAWINGS.
- 7 6" COLD FORM METAL FRAMING. REFER TO STRUCTURAL DRAWINGS.
- 8 6" (18 GA.) COLD FORM METAL STUD FRAMING AT 24" O.C. ATTACHED TO PRE-ENGINEERED METAL BUILDING STRUCTURAL FRAMING SYSTEM.
- 9 COLD FORM METAL STUD FRAMING CLIP. REFER TO STRUCTURAL DRAWINGS.
- 10 1 1/2" (26 GA.) COLD FORM METAL Z-FURRING FRAMING AT 24" O.C. AND POLYISOCYANURATE (R-9 MIN.) RIGID INSULATION BOARD WITH FOIL FACE VAPOR BARRIER.
- 11 FIRE TREATED 2X NAILER(S) CONTINUOUS. CUT TO FIT WALL WIDTH. ATTACHED TO METAL STUD FRAMING WITH #12 SCREWS AT 24" O.C. STAGGERED. ATTACHED TO CMU BOND BEAM WITH 1/2" DIA. ANCHORS AT 32" O.C.
- 12 FIRE TREATED 2X NAILER OR BLOCKING.
- 13 EXTERIOR INSULATION FINISH SYSTEM (EIFS) OVER RIGID INSULATION DRAINAGE BOARD IN THICKNESS INDICATED.
- 14 EXTERIOR INSULATION FINISH SYSTEM (EIFS) DRIP.
- 15 PRE-ENGINEERED METAL BUILDING ROOF INSULATION (R-36) LINER SYSTEM. REFER TO SCOPE OF WORK SCHEDULE. VAPOR BARRIER OVER HIGH STRENGTH STEEL SUSPENSION STRAPS ATTACHED TO BOTTOM OF PRE-ENGINEERED METAL BUILDING ROOF PURLINS WITH (1) LAYER 6" (R-26) UN-FACED BATT INSULATION PARALLEL WITH ROOF PURLIN CAVITY AND (1) LAYER 3 1/2" (R-11) UN-FACED BATT INSULATION PERPENDICULAR OVER TOP OF ROOF PURLINS.
- 16 6" (R-19) BATT INSULATION WITH FOIL FACE VAPOR BARRIER.
- 17 FLEXIBLE FLASHING CONTINUOUS TO LAP OVER NAILERS AND DOWN BEHIND CONTINUOUS CLEATS ON BOTH SIDES. LAP JOINTS 8" MINIMUM AND MASTIC.
- 18 SMOOTH FACE SINGLE SCORE CONCRETE MASONRY UNIT (CMU), (7 5/8" X 3 5/8" X 15 5/8") IN RUNNING BOND WITH HORIZONTAL REINFORCEMENT AT 16" O.C. REFER TO STRUCTURAL DRAWINGS FOR VERTICAL REINFORCEMENT REQUIREMENTS.
- 19 5/8" EXTERIOR FIBERGLASS REINFORCED SHEATHING WITH CONTINUOUS WEATHER BARRIER. REFER TO STRUCTURAL DRAWINGS FOR ATTACHMENT REQUIREMENTS.
- 20 5/8" TYPE "X" GYPSUM BOARD. REFER TO INTERIOR WALL TYPES FOR ADDITIONAL REQUIREMENTS.
- 21 SUSPENDED ACOUSTICAL LAY - IN CEILING SYSTEM. REFER TO INTERIOR FINISH SCHEDULE FOR TYPES AND LOCATIONS.
- 22 FLOORING AND BASE. REFER TO INTERIOR FINISH SCHEDULE FOR TYPES AND LOCATIONS.
- 23 SEALANT WITH BACKER ROD (WHERE REQUIRED) TYPICAL AT OPENING PERIMETER JOINTS.
- 24 ALUMINUM WINDOW SYSTEM. REFER TO FLOOR PLAN AND WINDOW SCHEDULES FOR TYPES.
- 25 DOOR AND FRAME SYSTEM. REFER TO FLOOR PLAN AND SCHEDULES FOR TYPES.
- 26 PRE-ENGINEERED METAL BUILDING PRIMARY AND SECONDARY STRUCTURAL FRAMING SYSTEMS.
- 27 PRE-ENGINEERED METAL BUILDING TRANSITION SUPPORT PLATE ASSEMBLY.
- 28 PRE-ENGINEERED METAL BUILDING ROOF PANEL SYSTEM WITH THERMAL SPACER BLOCKS (R-5 MIN.).
- 29 PRE-ENGINEERED METAL BUILDING SHEET METAL FLASHING, COUNTER - FLASHING, CONTINUOUS CLEATS, DRIPS CLOSURES, TRANSITIONS, COPINGS AND ACCESSORIES AS REQUIRED.
- 30 PRE-ENGINEERED METAL BUILDING GUTTER AND DOWNSPOUT SYSTEM. REFER TO EXTERIOR ELEVATIONS FOR LOCATIONS. REFER TO P.E.M.B. SHOP DRAWINGS FOR SIZES.
- 31 SURFACE MOUNTED WALL SIGN, OWNER FURNISHED AND INSTALLED. (REFER TO SCOPE OF WORK SCHEDULE). PROVIDE BACKING AND ELECTRICAL ROUGH-IN. REFER TO ELECTRICAL DRAWINGS.
- 32 RECESSED LIGHTING FIXTURE. REFER TO ELECTRICAL DRAWINGS FOR TYPE AND LOCATION.
- 33 PRE-ENGINEERED METAL BUILDING CS BACK-UP PANEL. COLOR TO MATCH ROOF.
- 34 RETAINING WALL. REFER TO STRUCTURAL DRAWINGS.
- 35 SHEET MEMBRANE AND 6" DRAINAGE PIPE SHEET MEMBRANE WATERPROOFING AND ASSOCIATED DRAINAGE BOARD REFER TO SPECIFICATIONS, CIVIL AND STRUCTURAL PLANS.
- 36 RIGID INSULATION BOARD WHERE INDICATED ON STRUCTURAL DRAWINGS.



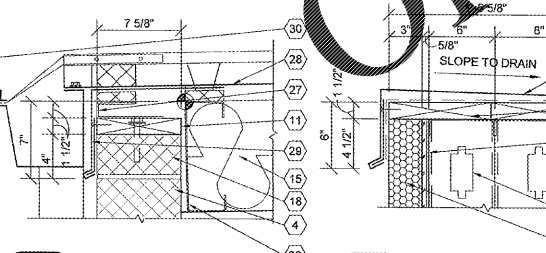
1 WALL SECTION
A3.1 SCALE: 3/4" = 1'-0"



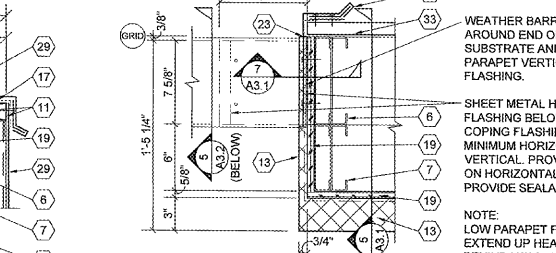
2 WALL SECTION
A3.1 SCALE: 3/4" = 1'-0"



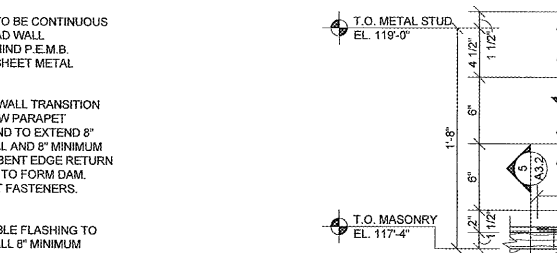
3 WALL SECTION
A3.1 SCALE: 3/4" = 1'-0"



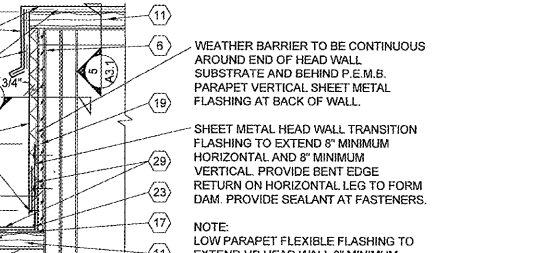
4 SECTION
A3.1 SCALE: 1 1/2" = 1'-0"



5 SECTION
A3.1 SCALE: 1 1/2" = 1'-0"



6 PLAN SECTION
A3.1 SCALE: 1 1/2" = 1'-0"



7 DETAIL
A3.1 SCALE: 1 1/2" = 1'-0"

WEATHER BARRIER TO BE CONTINUOUS AROUND END OF HEAD WALL SUBSTRATE AND BEHIND P.E.M.B. PARAPET VERTICAL SHEET METAL FLASHING.

SHEET METAL HEAD WALL TRANSITION FLASHING BELOW LOW PARAPET COPING FLASHING AND TO EXTEND 8" MINIMUM HORIZONTAL AND 8" MINIMUM VERTICAL. PROVIDE BENT EDGE RETURN ON HORIZONTAL LEG TO FORM DAM. PROVIDE SEALANT AT FASTENERS.

NOTE:
LOW PARAPET FLEXIBLE FLASHING TO EXTEND UP HEAD WALL 8" MINIMUM BEHIND HEAD WALL SHEET METAL TRANSITION FLASHING.

WEATHER BARRIER TO BE CONTINUOUS AROUND END OF HEAD WALL SUBSTRATE AND BEHIND P.E.M.B. PARAPET VERTICAL SHEET METAL FLASHING AT BACK OF WALL.

SHEET METAL HEAD WALL TRANSITION FLASHING TO EXTEND 8" MINIMUM HORIZONTAL AND 8" MINIMUM VERTICAL. PROVIDE BENT EDGE RETURN ON HORIZONTAL LEG TO FORM DAM. PROVIDE SEALANT AT FASTENERS.

NOTE:
LOW PARAPET FLEXIBLE FLASHING TO EXTEND UP HEAD WALL 8" MINIMUM BEHIND HEAD WALL SHEET METAL TRANSITION FLASHING.

Order Plans @ WWW.IDLine.com



CRAIG A. SCHNEIDER, AIA
ARCHITECT
1736 East Sunshine, Suite 417
Springfield, Missouri 65804
417.862.0558
417.862.3265
e-mail: architect@esteschnneider.com

PROJECT:
NEW O'REILLY AUTO PARTS STORE
OLD FRANKLIN TURNPIKE
ROCKY MOUNT, VA
WALL SECTIONS

O'Reilly AUTO PARTS
CORPORATE OFFICES
283 SOUTH PATTERSON
SPRINGFIELD, MISSOURI 65802
(417) 862-2674 TELEPHONE

COMM #	4252
DATE:	11-2-18
REVISION	
DATE:	