

RECEIVED
NOV 01 2018
718 E. SUNSHINE ST. SUITE 417
SPRINGFIELD, MO

COMMONWEALTH OF MISSOURI
MICHAEL JOHN
PALBE
Professional Engineer
No. SA 3438
11-2-18
417-862-0558
417-862-3265
e-mail: architect@craftyschneider.com

CRAIG A. SCHNEIDER, AIA
ARCHITECT
1736 East Sunshine, Suite 417
Springfield, Missouri 65804

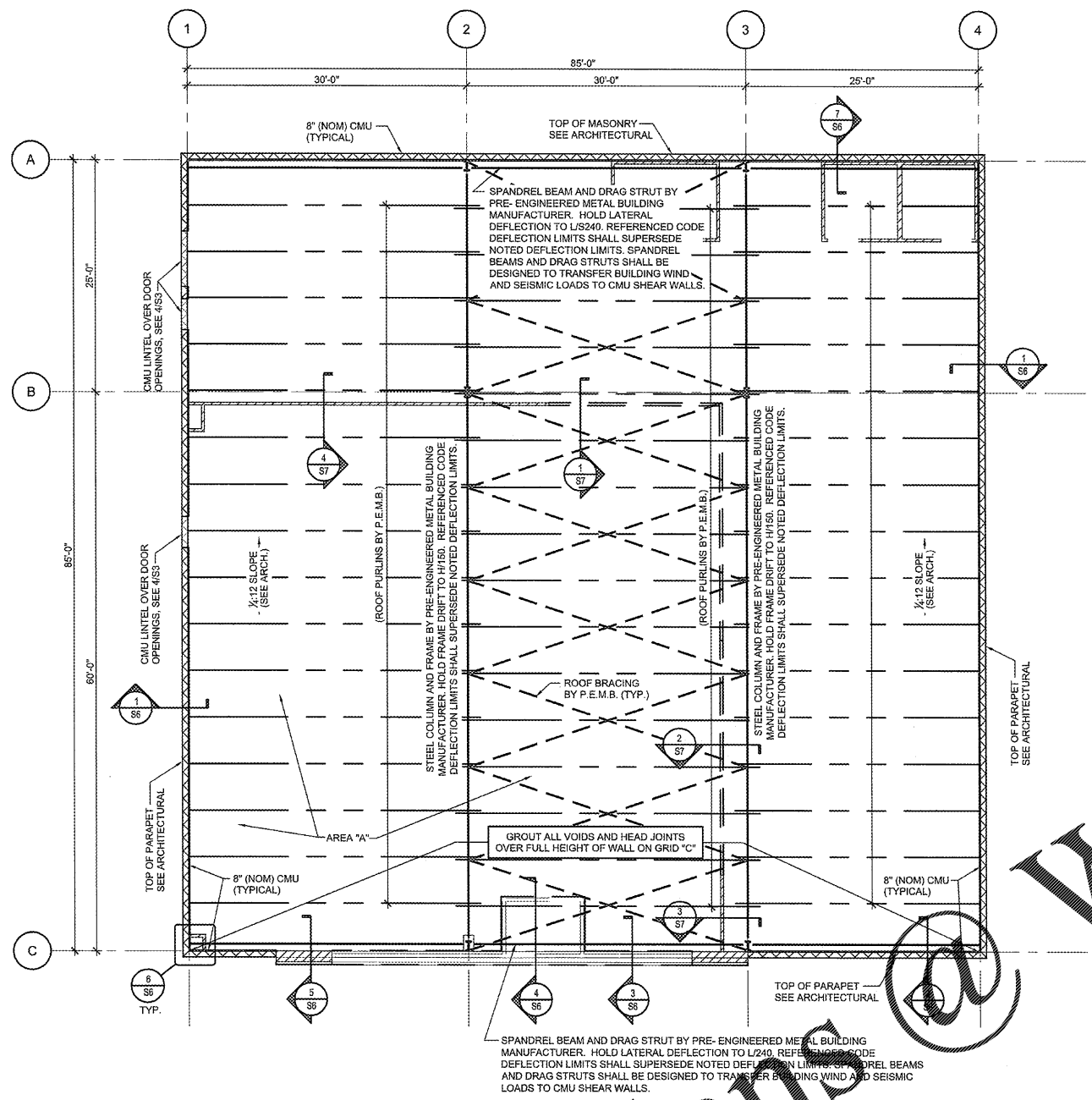
PROJECT:
NEW O'REILLY AUTO PARTS STORE
OLD FRANKLIN TURNPIKE
ROCKY MOUNT, VA
ROOF FRAMING PLAN

O'Reilly AUTO PARTS
CORPORATE OFFICES
233 SOUTH PATTERSON
SPRINGFIELD, MISSOURI 65802
(417) 862-2674 TELEPHONE

COMM # 4252
DATE: 11-2-18
REVISION
DATE:

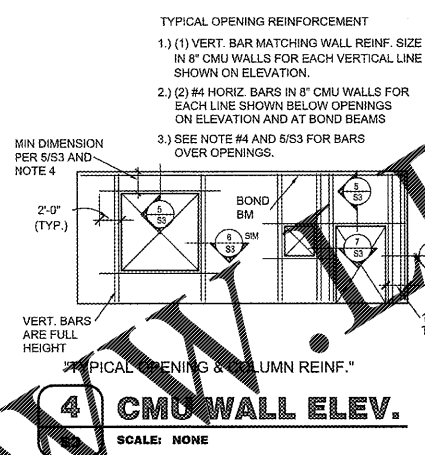
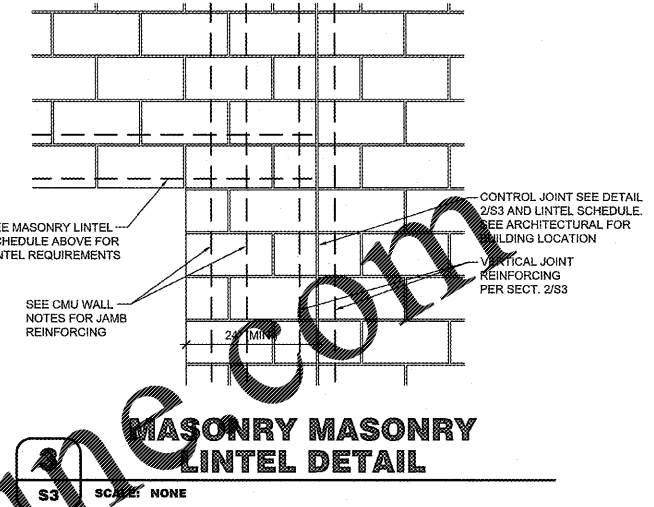
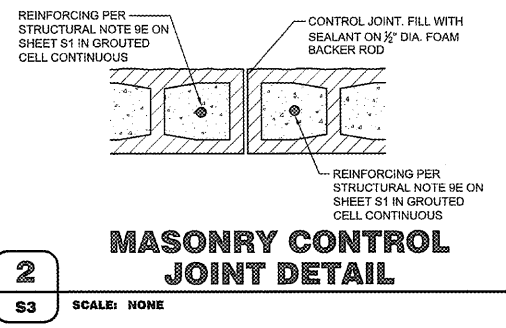
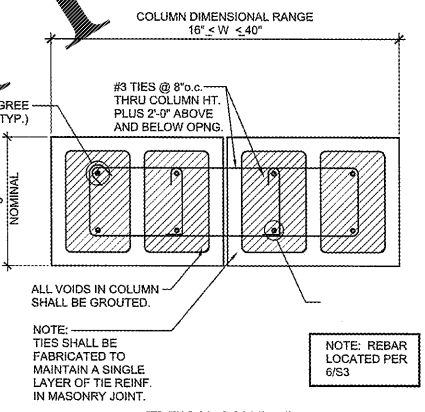
BOB D. CAMPBELL & CO.
Structural Engineers Since 1957
4338 Bellevue Ave. 616.531.4144
Kansas City, MO 64111 www.bdc-engra.com

S3 of 7



CMU CONTROL JOINTS

- SPACING:
25'-0" MIN. IN FULLY GROUTED CMU
20'-0" MIN. IN PARTIALLY GROUTED CMU
30'-0" MAX.
- CONTROL JOINT MUST BE LOCATED 4'-8" +/- FROM BUILDING CORNER. REFER TO ROOF SECTIONS 3/S6 AND 6/S6.
- COORDINATE CONTROL JOINTS WITH ROOF PURLINS. LOCATE AT APPROX. MID-POINT BETWEEN ROOF PURLINS. REFER TO ROOF SECTION 1/S6.



GENERAL CRITERIA: (SECTION 4/S3 CONT.)

- VERTICAL REINFORCING BARS SHOWN SEPARATE ON "TYPICAL OPENING" SHALL BE PLACED IN SEPARATE VOIDS.
- VERTICAL REINF. BARS SHALL BE DOWELED TO FOUNDATION WITH A DOWEL OF MATCHING SIZE AND SPACING.
- CONTRACTOR SHALL COORDINATE AND VERIFY OPENINGS IN MASONRY WALLS. OPENINGS SHALL BE DETAILED ON REINFORCING SHOP DRAWING ELEVATIONS.
- LINTEL REINFORCING (5/S3):
A.) OPENINGS 5'-4" OR LESS WIDE - 2#4 CONT.
B.) OPENINGS BTWN 5'-4" & 6'-4" WIDE - 2#5 CONT. (TOP & BOT)
C.) OPENINGS BTWN 6'-4" & 8'-0" WIDE - 2#6 CONT. (TOP & BOT)

