

RECEIVED
NOV 01 2018
1736 EAST VANDERBILT

LANDSCAPE SCHEDULE					
KEY	QTY.	BOTANICAL NAME	COMMON NAME	CAL.	CONT.
SHADE TREES					
QPH	3	QUERCUS PHELLOS	BELLY OAK	2 1/2" P.CAL. 120" H"	848
SUBTOTAL	3				

GENERAL NOTES

- A REFER TO PROJECT MANUAL FOR ADDITIONAL REQUIREMENTS.
- B SITE CONDITIONS BASED UPON SURVEY PROVIDED BY OWNER. CONTRACTOR TO FIELD VERIFY EXISTING CONDITIONS BY DETAILED INSPECTION PRIOR TO SUBMITTING BID AND BEGINNING CONSTRUCTION. NOTIFY ARCHITECT IF EXISTING CONDITIONS DEVIATE SUBSTANTIALLY FROM THOSE INDICATED HEREIN.
- C REFER TO CIVIL DRAWINGS FOR ADDITIONAL REQUIREMENTS. COORDINATE WORK WITH OTHER SITE RELATED DEVELOPMENT DRAWINGS.
- D ALL PLANTING TYPES SHALL COMPLY WITH LOCAL GOVERNING CODES AND REGULATIONS. CONFORM TO REQUIREMENTS OF PLANT LIST AND TO THE AMERICAN ASSOCIATION OF NURSERMEN "AMERICAN STANDARD OF NURSERY STOCK" AND "HORTICULTURAL STANDARDS" AS TO SPECIES, AGE, SIZE, AND PLANTING RECOMMENDATIONS.
- E NO MATERIAL SUBSTITUTIONS SHALL BE MADE WITHOUT THE ARCHITECT'S PRIOR WRITTEN APPROVAL. ALTERNATE MATERIALS OF SIMILAR SIZE AND CHARACTER MAY BE CONSIDERED IF SPECIFIED PLANT MATERIALS CANNOT BE OBTAINED.
- F PLANT LOCATION IS APPROXIMATE. ADJUST AS NECESSARY TO AVOID CONFLICTS.
- G QUANTITIES AND MATERIALS SHOWN ON LANDSCAPING PLAN TAKE PRECEDENCE OVER QUANTITIES SHOWN ON PLANTING SCHEDULE. CONTRACTOR SHALL BE RESPONSIBLE FOR VERIFYING ALL QUANTITIES ON LANDSCAPING PLAN.
- H PROVIDE TOPSOIL AT ALL SOD, SEED AND PLANTING AREAS. GRADE SHALL BE ADJUSTED FOR SOD THICKNESS. REFER TO CIVIL SITE GRADING FOR SLOPE REQUIREMENTS.
- I WHEN CLAY SOIL IS ENCOUNTERED IN THE ESTABLISHED OF THE LAWN OR THE INSTALLATION OF PLANT MATERIAL IT SHALL BE IMPROVED IN ACCORDANCE WITH STANDARD TRADE PRACTICE.
- J RE-ESTABLISH TURF IN AREAS DISTURBED BY GRADING OR UTILITY TRENCHING IN THE RIGHT-OF-WAY.
- K PRIOR TO INSTALLATION, GENERAL CONTRACTOR TO CONFIRM THAT LIGHT POLES, LANDSCAPING AND UTILITIES DO NOT CONFLICT WITH SIGN LOCATION SHOWN. IF ANY POTENTIAL CONFLICT IS DISCOVERED, GENERAL CONTRACTOR IS TO CONTACT OWNER'S REPRESENTATIVE BEFORE PROCEEDING WITH THE WORK.

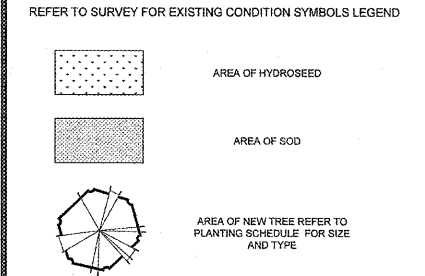


Craig A. Schneider, AIA
ARCHITECT
417.862.8558
417.862.3265
e-mail: architect@esterfschneider.com

KEY NOTES

- 1 AREA OF HYDROSEED AND STRAW. UNLESS NOTED OTHERWISE, ALL AREAS DISTURBED BY CONSTRUCTION ARE FIRST TO BE FINE GRADED AND THEN FOLLOWED BY HYDROSEED AND STRAW OVER MIN. 4" TOPSOIL STOCKPILED FROM SITE OR HAULED IN AS REQUIRED.
- 2 AREA OF SOD
- 3 CYPRESS MULCH. REFER TO DETAIL 2A.1.2
- 4 LANDSCAPE EDGING, PROVIDE AT ALL GROUND COVER TYPE TRANSITIONS.

SYMBOLS LEGEND



PLAN REFERENCES

- REFER TO LANDSCAPE NOTES AND DETAILS SHEET FOR LANDSCAPE NOTES
- THIS PLAN TO BE UTILIZED FOR SITE LANDSCAPE PURPOSES ONLY

PROJECT:
NEW O'REILLY AUTO PARTS STORE
OLD FRANKLIN TURNPIKE
ROCKY MOUNT, VA
LANDSCAPE PLAN

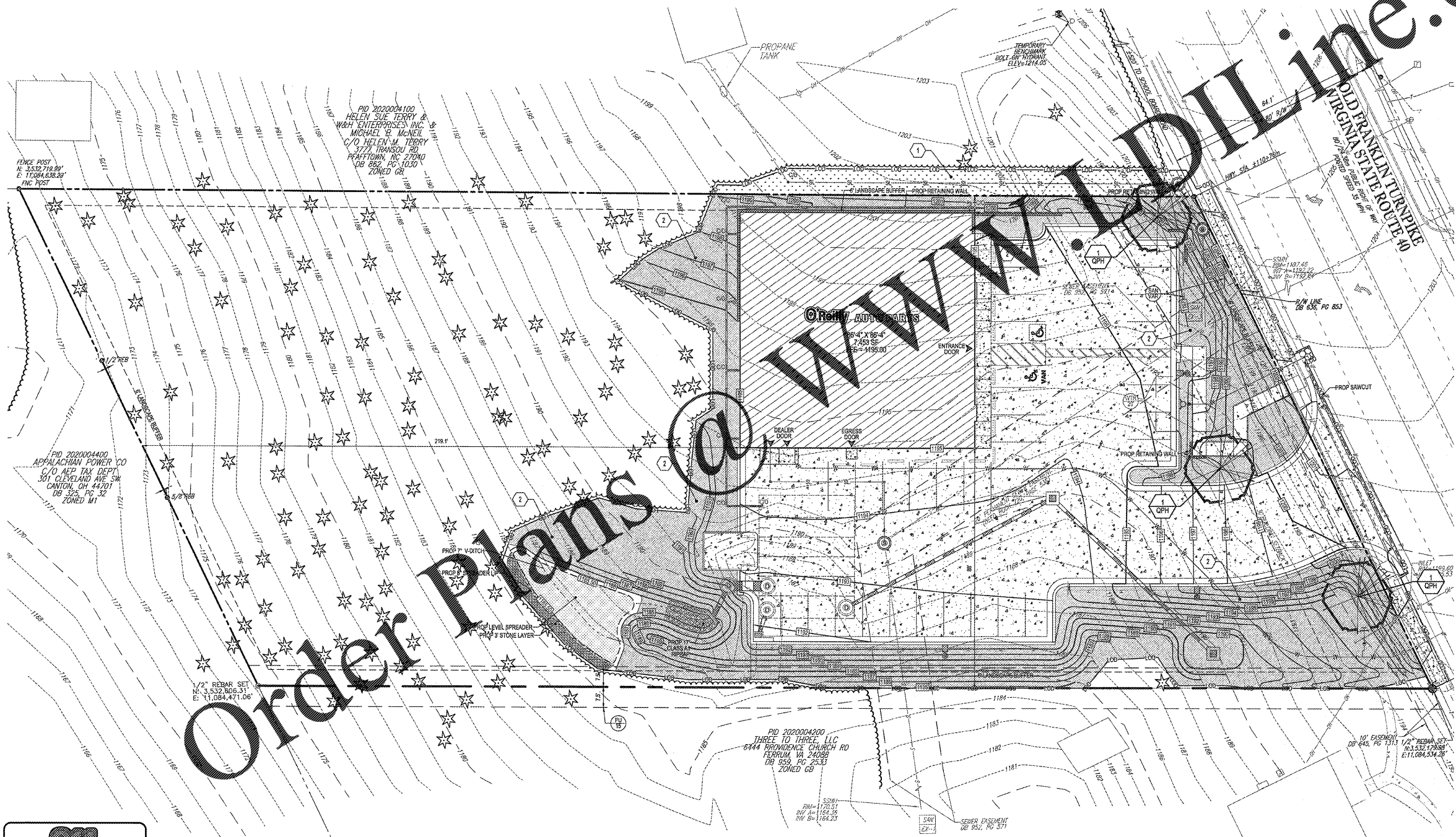
O'Reilly AUTO PARTS
CORPORATE OFFICES
233 SOUTH PATTERSON
SPRINGFIELD, MISSOURI 65802
(417) 862-2674 TELEPHONE

COMM # 4252
DATE: 11-2-18
REVISION
DATE:



PROJECT No.: V183205 SCALE: 1"=20'
DRAWN BY / CHECKED BY: DSH/JQR CAD I.D.: LP 0

L1.1



1 LANDSCAPE PLAN
L1.1 SCALE: 1" = 20'

