



GENERAL NOTES

- A REFER TO PROJECT MANUAL FOR ADDITIONAL REQUIREMENTS.
- B DIMENSIONS ARE TO ROUGH FACE OF CONCRETE. FRAMING, OR CENTER LINE OF STRUCTURE UNLESS OTHERWISE INDICATED.
- C REFER TO CIVIL DRAWINGS FOR ADDITIONAL REQUIREMENTS.
- D REFER TO ARCHITECTURAL EXTERIOR FINISH SCHEDULE FOR MATERIAL TYPES, COLORS, AND FINISHES. UNLESS OTHERWISE INDICATED PROVIDE FINISHES AS FOLLOWS:

- 1 ALL NON-GALVANIZED METAL PARTS TO BE PRIMED AND PAINTED (2) COATS SHERWIN WILLIAMS SW6468 "HUNT CLUB".
- 2 POLYMER COMPOSITE MATERIAL COLOR TO BE EQUAL TO "TREX" DECKING SERIES "PEBBLE GREY". FINAL COLOR TO BE SELECTED BY OWNER FROM MANUFACTURER'S STANDARD SAMPLES.

CRAIG A. SCHNEIDER, AIA
ARCHITECT

1736 East Sunshine, Suite 417
Springfield, Missouri 65804

417-862-6598
Fax: 417-862-9265
e-mail: architect@estertyschneider.com

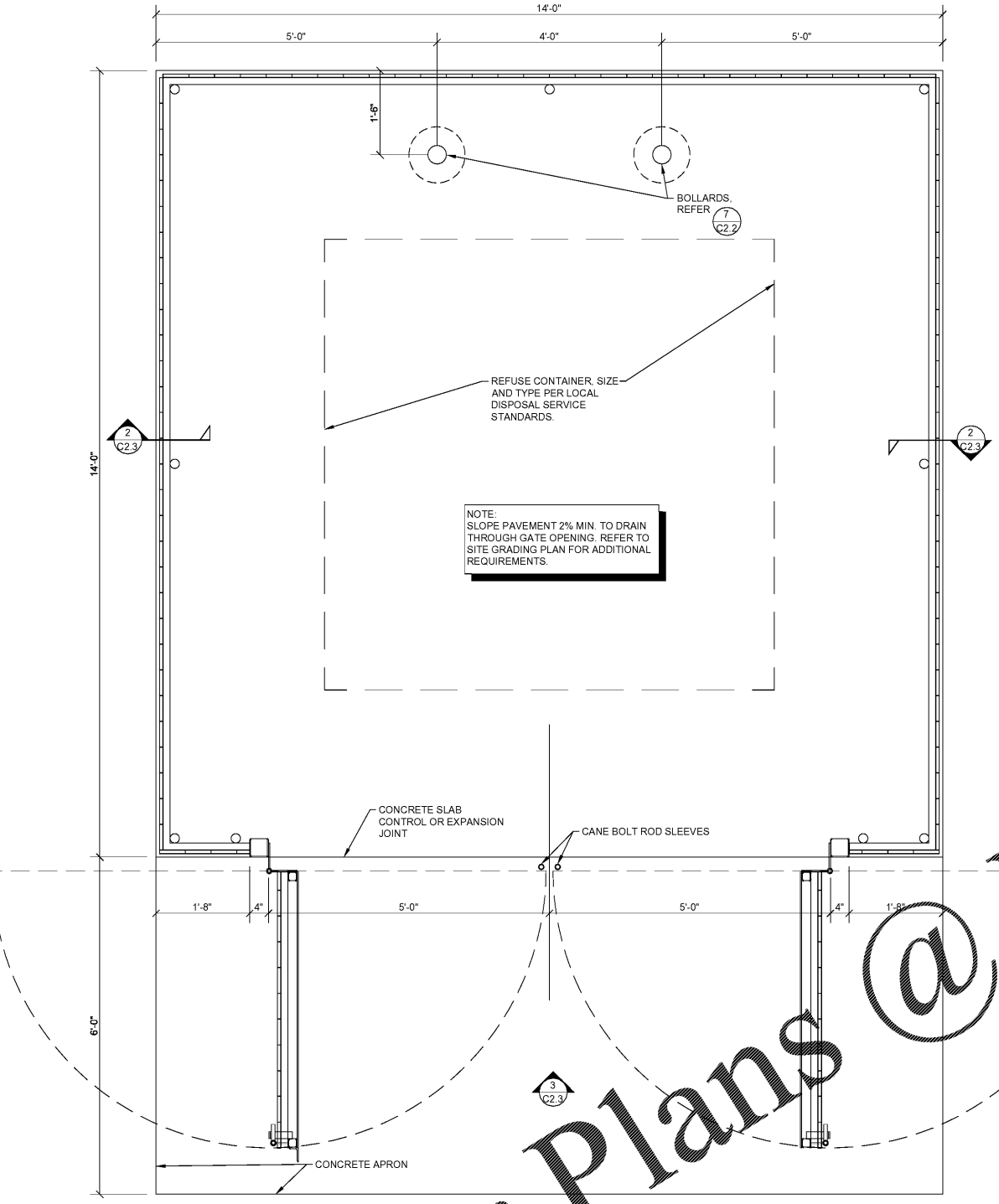
PROJECT:
**NEW O'REILLY AUTO PARTS STORE
OLD FRANKLIN TURNPIKE
ROCKY MOUNT, VA**

O'Reilly AUTO PARTS

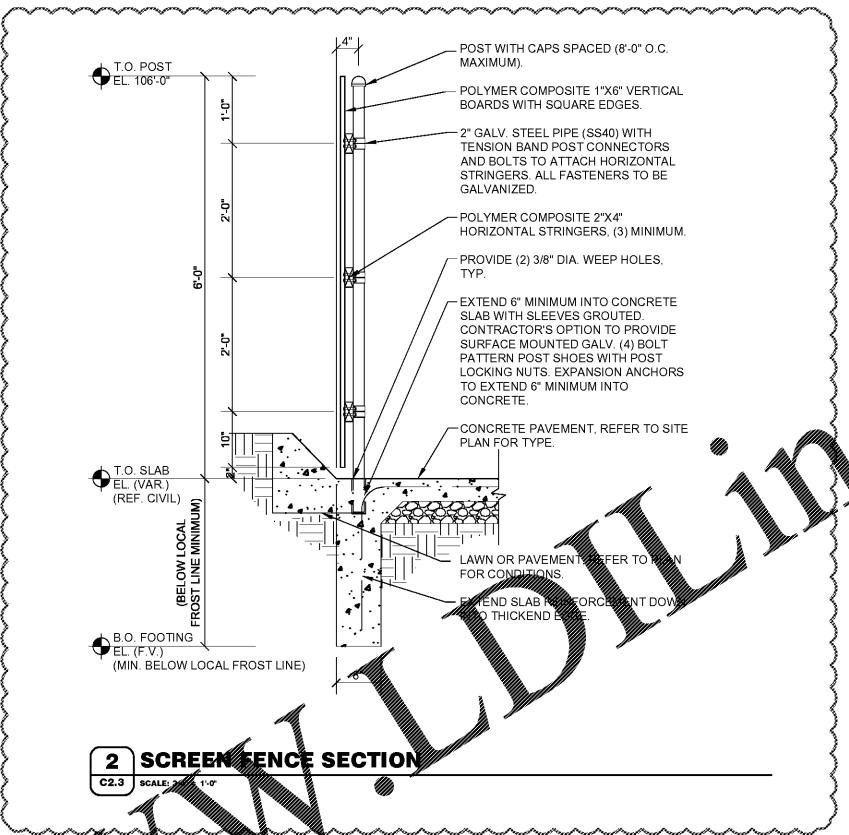
CORPORATE OFFICES
233 SOUTH PATTERSON
SPRINGFIELD, MISSOURI 65802
(417) 862-2674 TELEPHONE

COMM #	4252
DATE:	11-2-18
REVISION DATE:	2-22-19
	4-4-19

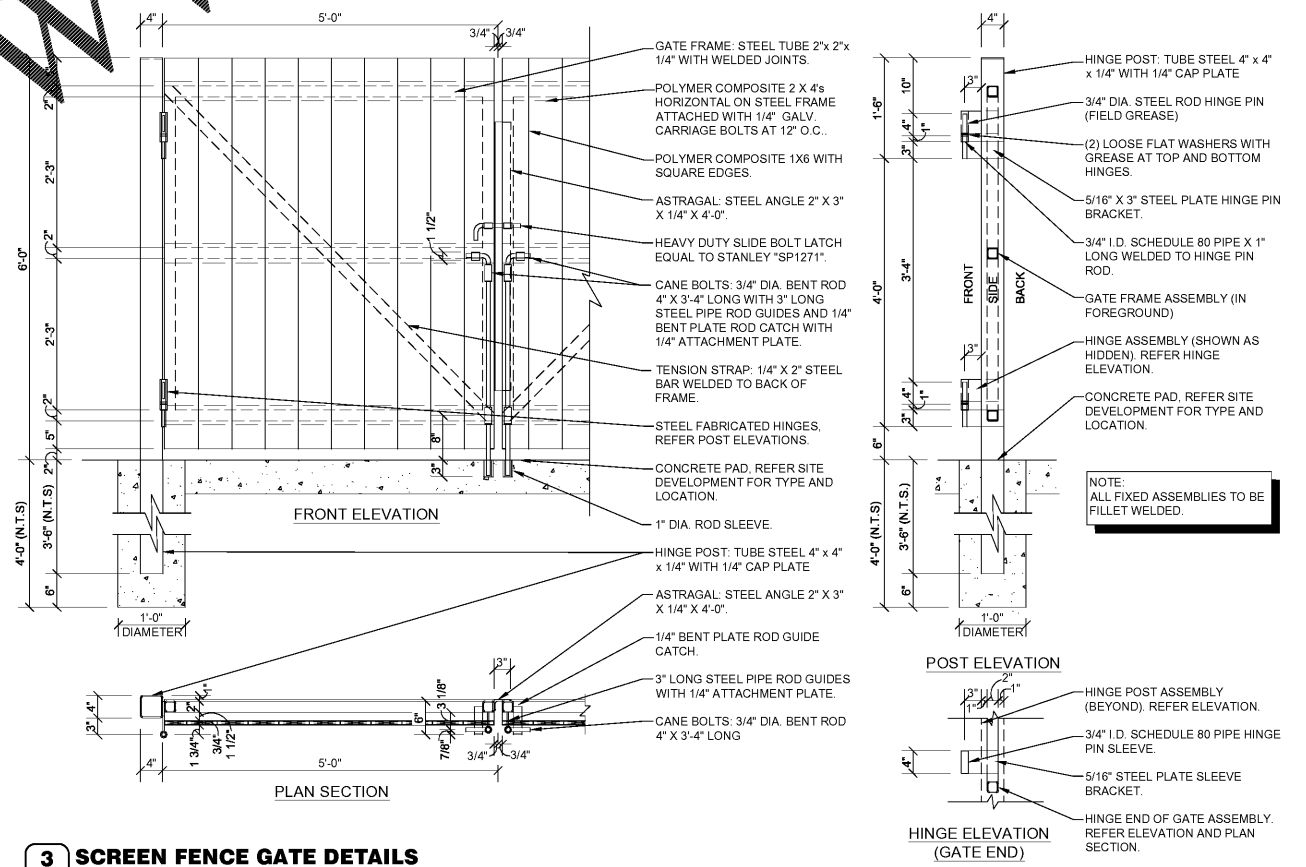
C2.3



1 POLYMER COMPOSITE MATERIAL SCREEN FENCE REFUSE ENCLOSURE PLAN
C2.3 SCALE: 3/4" = 1'-0"



2 SCREEN FENCE SECTION
C2.3 SCALE: 1/4" = 1'-0"



3 SCREEN FENCE GATE DETAILS
C2.3 SCALE: 3/4" = 1'-0"

Order Plans @ WWW.LDILine.com



PROJECT No. V183205 SCALE: AS NOTED
DRAWN BY / CHECKED BY: DSH/JUR CAD I.D. SD1