

**SIZING OF GREASE INTERCEPTORS FROM TABLE H-1 OF UNIFORM PLUMBING CODE**

# of Meals per peak hour	Waste Flow Rate	Retention Time	Storage Factor	Interceptor Size (liquid capacity)
220 meals	2 gallons	1.5 hours	1.5	990 Gallon Grease Interceptor

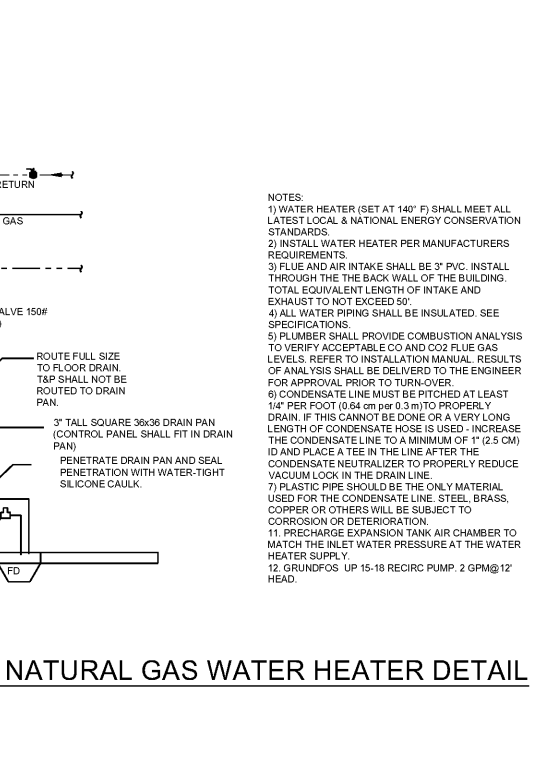
Waste Flow Rate  
a. With dishwashing machine 6 gallon  
b. Without dishwashing machine 5 gallon  
c. Single service kitchen 2 gallon  
d. Food waste disposer 1 gallon

Retention Times  
Commercial kitchen waste  
Dishwasher 2.5 hours  
Single service kitchen 1.5 hours

Storage Factors  
Fully equipped commercial kitchen  
8 hour operation 1  
16 hour operation 2  
24 hour operation 3  
Single Service Kitchen 1.5

**CONNECTED GAS LOAD SCHEDULE #13213 HUDDLE HOUSE PROTO**

MARK	DESCRIPTION	CONN SIZE	QTY	CFH	CFH TOTAL
RTU-1	ROOFTOP UNIT	3/4"	1	120	120
RTU-2	ROOFTOP UNIT	3/4"	1	120	120
MAU-1	ROOFTOP UNIT	3/4"	1	130	130
<b>HEATING LOAD CFH TOTAL</b>					<b>370</b>
WH-1	WATER HEATER	1	1	120	120
<b>WATER HEATING LOAD CFH TOTAL</b>					<b>120</b>
C1.0	FRYER	3/4"	2	110	220
C3.0	HOT PLATE	3/4"	2	24	48
C5.0	36" GRILL	3/4"	1	81	81
C5.1	48" GRILL	3/4"	1	108	108
<b>COOKING LOAD CFH TOTAL</b>					<b>457</b>
<b>TOTAL CONNECTED GAS LOAD CFH</b>					<b>947</b>



**PLUMBING NOTES:**

- PROVIDE CONNECTION TO EXISTING WATER SERVICE IN BACK OF SPACE. PROVIDE WATER METER AND RPZ VALVE. COORDINATE METER REQUIREMENTS WITH VILLAGE. CONNECT TO EXISTING SANITARY AND KITCHEN WASTE STUB IN AS INDICATED. PROVIDE CLEAN OUTS. VERIFY EXACT LOCATIONS IN FIELD.
- VERIFY CONNECTION SIZE AND LOCATION OF ALL ITEMS WITH KITCHEN EQUIPMENT DRAWINGS. PROVIDE SHUT-OFF VALVES AT ALL POINTS OF CONNECTION.
- PROVIDE GAS CONNECTION TO EXISTING METER IN REAR. PROVIDE CONNECTION TO ROOF MOUNTED EQUIPMENT AND TO KITCHEN EQUIPMENT AS INDICATED ON KITCHEN EQUIPMENT DRAWING. PROVIDE SHUT-OFF VALVES AT ALL POINTS OF CONNECTION. PROVIDE SOLENOID SHUT-OFF VALVE FOR GAS ITEMS UNDER KITCHEN HOODS. INTERLOCK WITH HOOD FIRE PROTECTION SYSTEM.

ALL WORK WITHIN THIS SCOPE OF WORK SHALL COMPLY WITH ALL CITY, STATE AND NATIONAL PLUMBING CODES. ALL WORK SHALL CONFORM TO BUILDING STANDARDS.

**PLUMBING:**

WATER PIPING ABOVE GRADE SHALL BE TYPE "L" COPPER TUBING WITH WROUGHT COPPER AND BRONZE SOLDER 95-5. JOINTS, SOLDER SHALL BE SILVER. SANITARY SEWER PIPING ABOVE GRADE SHALL BE CAST IRON, ASTM A74 OR CLSP 30. SERVICE WEIGHT. FITTINGS SHALL BE CAST IRON. JOINTS SHALL BE HUB AND SPIGOT COMPRESSION TYPE WITH NEOPRENE GASKETS OR STAINLESS STEEL CLAMP AND SHIELD ASSEMBLIES WITH NEOPRENE GASKET. PVC AS ALLOWED BY LOCAL CODE. VENT PIPING SHALL BE GALVANIZED STEEL ASTM A53 SCHEDULE 40. OR PVC AS ALLOWED BY LOCAL CODE.

FLANGES UNIONS COUPLINGS:  
SLOPE ALL PIPING FOR APPROPRIATE DRAINAGE AT LOW POINTS. ALLOW FOR EXPANSION AND CONTRACTION WITH STRESSING PIPE. PROVIDE NON-CONDUCTING DIELECTRIC FITTINGS WHEN JOINING DISSIMILAR METALS. PROVIDE ACCESS TO ALL VALVES AND CLEAN OUTS. SUPPORT ALL PIPING PROPERLY. EXPAND CLEAN OUT TO FINISH FLOOR OR WALL SURFACE. ROUTE PIPING IN AN APPROPRIATE MANNER TO CONSERVE SPACE. ALL PIPING SHALL BE PROPERLY AND INDEPENDENTLY SUPPORTED FROM STRUCTURE USING CLEVIS TYPE PIPE HANGERS.

INSULATION:  
PROVIDE 1" FIBERGLASS INSULATION WITH VENT BARRIER ON ALL CW, HW, AND DRAINAGE PIPING. INSULATION SHALL INCLUDE ALL VALVES AND FITTINGS.

SAWCUTTING & DRIVING:  
SAWCUT AND DRILL EXISTING FLOORING REQUIRED FOR INSTALLATION OF NEW SANITARY PIPING AND CLEAN OUTS. FLOOR TO BE RESTORED TO ORIGINAL CONDITION UPON COMPLETION OF WORK. PROVIDE SLEEVES WHENEVER PIPING PASSES THROUGH WALLS AND FLOORS.

FLOOR FINISHES:  
COORDINATE LOCATION AND SIZE OF FLOOR DRAINS AND CLEAN OUTS WITH ARCHITECTURAL DRAWINGS AND GENERAL CONTRACTOR. DRAINS AND CLEAN OUTS BY 2" OR APPROVED EQUAL.

CLEANING AND TESTING:  
CONTRACTOR SHALL FLUSH AND CLEAN OUT ALL DOMESTIC WATER PIPING IN ACCORDANCE WITH AWWA STANDARDS AND ALL LOCAL CODES. SANITARY AND VENT PIPING SHALL BE TESTED PRIOR TO BEING PLACED IN SERVICES.

AIR TEST:  
FILL PIPE SYSTEM WITH AIR AND MAINTAIN 5PSI FOR 15 MINUTES WITHOUT ADDITIONAL AIR.

WATER TEST:  
MAINTAIN WATER PRESSURE OF AT LEAST TEN FEET OF HEAD AT ALL POINTS OF SYSTEM FOR AT LEAST 15 MINUTES.

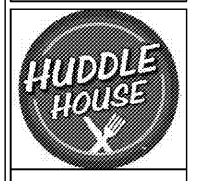
**PLUMBING SCHEDULE**

MARK	DESCRIPTION	FIXTURE		VALVE / FAUCET		CONNECTIONS		ELECTRICAL		REMARKS				
		MFR	MODEL	MFR	MODEL	WASTE	VENT	CW	HW		VOLTAGE	PHASE	WATTS	
WC-1	WATER CLOSET HANDICAP	AMERICAN STANDARD	MADERA #2305.100, WHITE	SLOAN	ROYAL #111	4"	2"	1-1/4"	-	-	-	-	-	1.10
UR-1	URINAL	AMERICAN STANDARD	ALLBROOK #6541.132, WHITE	SLOAN	ROYAL #186-1	2"	2"	1"	-	-	-	-	-	-
LV-1	LAVATORY	AMERICAN STANDARD	LUCERNE #0356.015, WHITE	AMERICAN STANDARD	MONTERREY #6530.170	2"	2"	1/2"	1/2"	-	-	-	-	2.3
FD-1	FLOOR DRAIN	ZURN OR EQUAL	2415 OR 2400	-	-	3"	1-1/2"	-	-	-	-	-	-	4.11
WH-1	WATER HEATER	A.O. SMITH	CYCLONE BTH-120	-	-	-	-	3/4"	3/4"	120	1	-	-	-
MS-1	MOP SINK	MUSTEE	63M	-	-	3"	2"	1/2"	3/4"	-	-	-	-	5
FCO	FLOOR CLEAN OUT	ZURN	CO-2451	-	-	-	-	-	-	-	-	-	-	6
BFP	BACK FLOW PREVENTER	-	ASSE1012	-	-	-	-	-	-	-	-	-	-	7
SK-1	HAND SINK	REFER TO DRAWING A010	-	-	-	3"	1-1/2"	1"	1"	-	-	-	-	8
SK-2	1 COMPARTMENT SINK	REFER TO DRAWING A010	-	-	-	3"	1-1/2"	1"	1"	-	-	-	-	8
SK-3	3 COMPARTMENT SINK	REFER TO DRAWING A010	-	-	-	3"	1-1/2"	1"	1"	-	-	-	-	8
GCO	GRADE CLEAN OUT	-	-	-	-	-	-	-	-	-	-	-	-	-
TP	TRAP PRIMER	PRECISION PLUMBING	PRIME-RITE	-	-	-	-	1/2"	-	-	-	-	-	-
FS-1	FLOOR SINK	J.R. SMITH OR EQUAL	3440	-	-	3"	1-1/2"	-	-	-	-	-	-	9
HB-1	EXTERIOR HOSE BIBB	ZURN OR EQUAL	Z-1321	-	-	-	-	3/4"	-	-	-	-	-	13
TMV	THERMOSTATIC MIXING VALVE	-	-	-	-	-	-	1"	1"	-	-	-	-	12

**REMARKS:**

- PROVIDE WITH AMERICAN STANDARD WHITE OPEN FRONT SEAT LESS COVER #5337.100.
- PROVIDE WITH J. R. SMITH #0700 FLOOR MOUNT LAVATORY CARRIER.
- PROVIDE WITH TRUEBRO LAV GUARD MODEL #102 FOR TRAP AND SUPPLY PROTECTION.
- CAST IRON UNIT WITH GRATE. DRAIN TO BE PRIMED FROM NEAREST FLUSH VALVE.
- PROVIDE WITH AMERICAN STANDARD 8344.111 COMBINATION FAUCET WITH HOSE FITTING AND VACUUM BREAKER - SET 36" AFF.
- PROVIDE WITH NICKEL BRONZE COVER.
- BRONZE DOUBLE CHECK VALVE. A SECONDARY CHECK PER ASSE 1032 SHALL BE INSTALLED ON EACH BEVERAGE DISPENSING UNIT AND WATER FILTER.
- PROVIDE FAUCETS AND ACCESSORIES AS REQUIRED FOR COMPLETE OPERATION.
- DRAIN SHALL BE 12"x12"x10" DEEP WITH CAST IRON FLANGE, ACID RESISTANT COATED INTERIOR, ACID RESISTANT COATED CASE IRON GRATE AND ALUMINUM DOME BOTTOM STRAINER.
- PRECHARGE EXPANSION TANK AIR CHAMBER TO MATCH THE INLET WATER PRESSURE AT THE WATER HEATER SUPPLY.
- GRUNDFOS UP-15-18 RECIRC PUMP, 2 GPM@12' HEAD.

Order Plans @



JOB NO. L1905

**NORWOOD ARCHITECTS**  
807 Fortessville, N.W.  
Atlanta, Georgia 30318  
ph. 678-921-0302 fax. 678-921-0301  
www.norwoodarchitects.com

**HUDDLE HOUSE**  
EVO 2000 RESTAURANT  
40 US HWY 84 CAIRO, GA  
GRADY CO. 39828

NO. ISSUE DATE  
PERMIT SET  
04/15/2019

DRAWING NUMBER

**P300**