



JOB NO. LI905

NORWOOD ARCHITECTS
807 Forester St. N.W.
Atlanta, Georgia 30318
PH: 678-921-0302 FAX: 678-921-0301 www.norwoodarchitect.com

HUDDLE HOUSE
EVO 2000 RESTAURANT
40 US HWY 84 CAIRO, GA
GRADY CO. 39828

NO.	ISSUE DATE
	PERMIT SET 04/15/2019

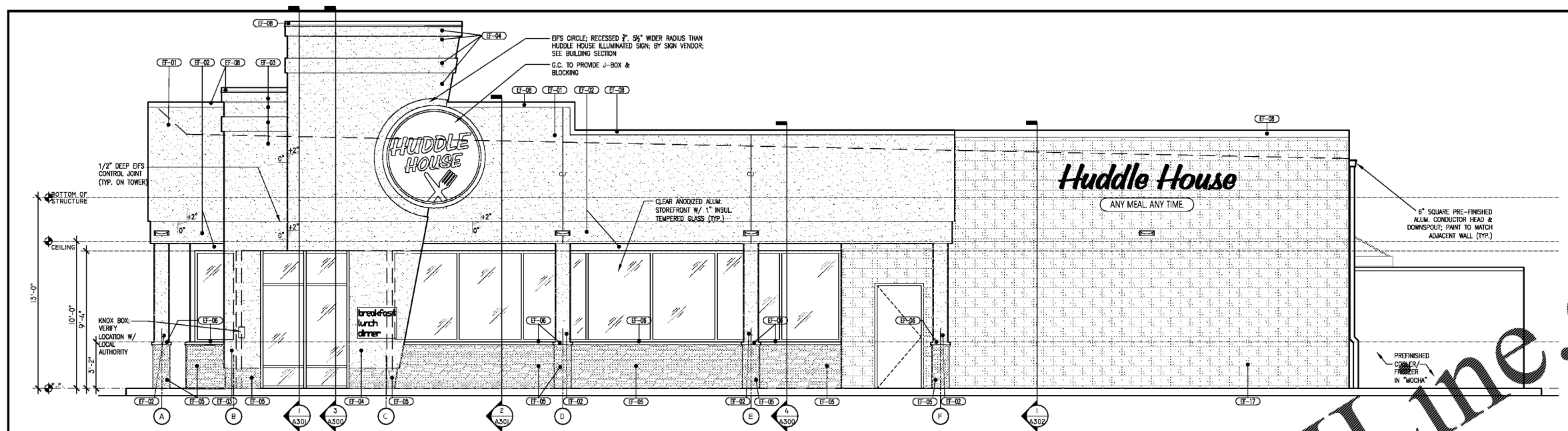
DRAWING NUMBER

A200

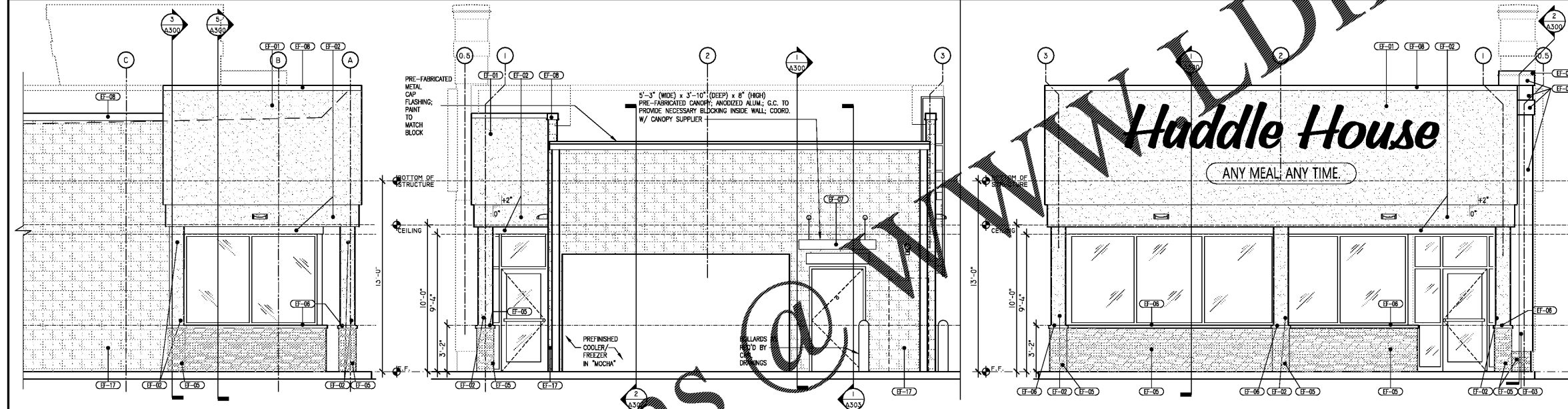
EXTERIOR FINISH LEGEND
SEE SHEET A003 FOR FINISH SCHEDULE

GENERAL NOTES

- DIMENSIONS ARE FROM FINISH FLOOR
 - SEE AREA FOR LIGHT FIXTURE LOCATIONS; SEE ELECTRICAL FOR FIXTURE TYPES & REQUIREMENTS
 - ELECTRICAL OUTLET MOUNTING HEIGHTS PER ELECTRICAL DWGS.
 - EXTERIOR WALL COLORS TO MATCH SHERWIN WILLIAMS PAINT
 - PRE-FINISHED METAL COPING; COLOR AS NOTED ON EXTERIOR ELEVATIONS; SEE COLOR SPECIFICATION LEGEND, A003
- DETAIL NOTES:
- EFS SYSTEM TO BE "OUTSULATION PLUS MD" BY "DORMIT SYSTEMS" W/ 1-1/2" THICK INSULATION UNLESS OTHERWISE NOTED. SEE ENTRY TOWER THICKNESS OVER 1-1/2"
 - FOR FINISH COLORS SEE COLOR SPECIFICATION LEGEND, A003
- METAL CANOPIES:
- WELDED 2" X 8" ALUMINUM FRAME W/ 0.063 ALUMINUM FASCIA; FINISHED TO MATCH STOREFRONT SYSTEM FINISH
 - G.C. TO COORDINATE W/ METAL CANOPY SUPPLIER & PROVIDE NECESSARY BLOCKING TO SECURE CANOPIES TO WALL FRAMING
 - G.C. TO COORDINATE CANOPY LIGHTING W/ SUPPLIER
- STOREFRONT / WINDOW:
- CLEAR ANODIZED FINISH ON ALUMINUM FRAMES
 - 2" WIDE X 4-1/2" DEEP & 1" INSULATING CLEAR GLASS (TYP.)
 - US ALUMINUM SERIES 4515; SEE A000 SERIES DRAWINGS
- NOTE:
COORDINATE INSULATED GLASS & SHADING COEFFICIENT W/ EC REQUIREMENTS



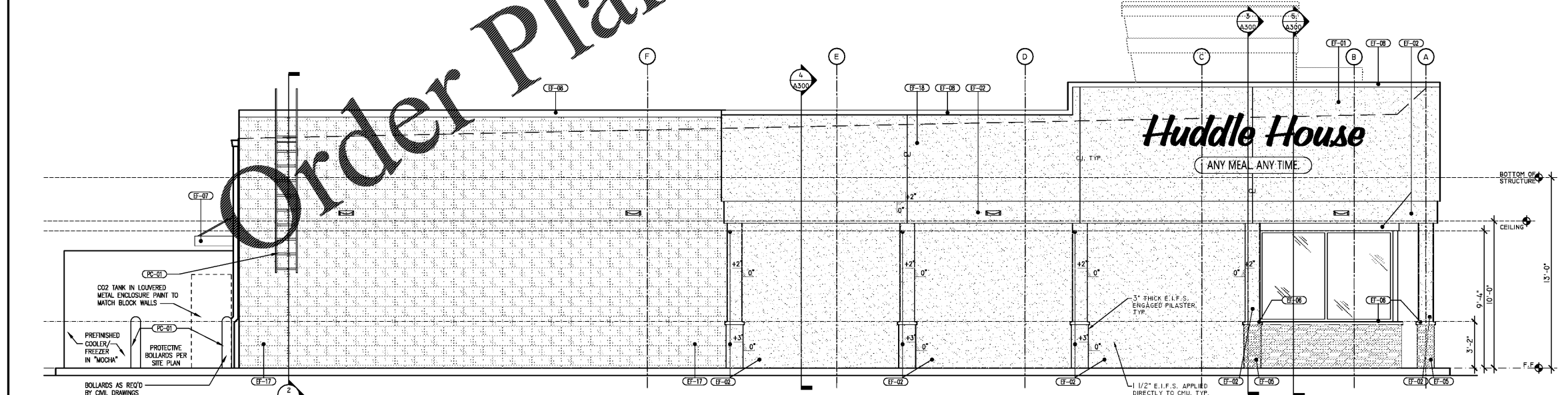
1 ENTRY ELEVATION
SCALE: 1/4"=1'-0"



4 BACK ELEVATION OPTION
SCALE: 1/4"=1'-0"

3 SERVICE END ELEVATION
SCALE: 1/4"=1'-0"

2 FRONT END ELEVATION
SCALE: 1/4"=1'-0"



5 BACK ELEVATION
SCALE: 1/4"=1'-0"

SHEET TITLE
EXTERIOR ELEVATIONS