



1927 South Tryon St., Suite 300, Charlotte, NC 28203
150 Fayetteville St., Suite 520, Raleigh, NC 27601
Phone: 704-339-1292 • www.optimaengineering.com



SCO #16-15889-02A

RICHMOND
COMMUNITY
COLLEGE

LEE BUILDING
STUDENT SERVICES &
CAREER CENTER
VOL.2

BID DOCUMENTS

ROOF PLAN -
POWER

DATE 4-5-2019

PROJECT NO 16063

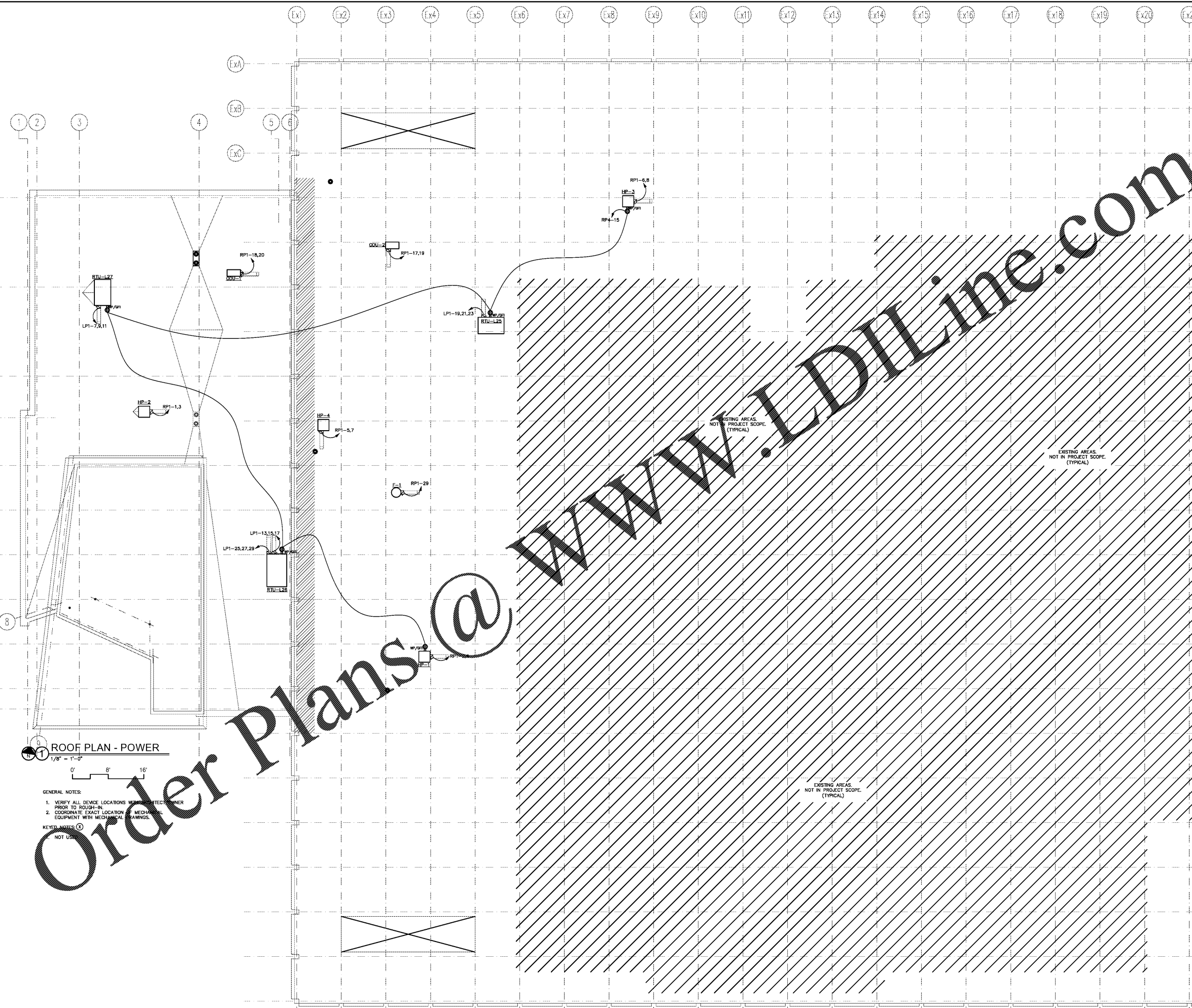
REVISIONS	
NO	DESCRIPTION

THIS DRAWING IS THE PROPERTY OF ADW ARCHITECTS, P.A. AND SHALL NOT BE REPRODUCED OR COPIED IN WHOLE OR IN PART. IT SHALL NOT BE USED ON ANY OTHER PROJECT OR GIVEN TO ANY OTHER COMPANY OR AGENCY WITHOUT THE CONSENT OF ADW ARCHITECTS, P.A.

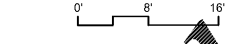


SEAL DATE: 04/02/19

SHEET NUMBER 14 OF 16
OPTIMA # 17-0017
E202



ROOF PLAN - POWER
1/8" = 1'-0"



- GENERAL NOTES:
1. VERIFY ALL DEVICE LOCATIONS WITH THE MECHANICAL ENGINEER PRIOR TO ROUGH-IN.
 2. COORDINATE EXACT LOCATION OF MECHANICAL EQUIPMENT WITH MECHANICAL DRAWINGS.

KEYED NOTES: (O) NOT USED

Order Plans @

WWW.LDILine.com