



1927 South Tryon St., Suite 300, Charlotte, NC 28203
150 Fayetteville St., Suite 520, Raleigh, NC 27601
Phone: 704-339-1292 • www.optimaengineering.com



SCO #16-15889-02A

RICHMOND
COMMUNITY
COLLEGE

LEE BUILDING
STUDENT SERVICES &
CAREER CENTER
VOL.2

BID DOCUMENTS

ELECTRICAL DETAILS

DATE 4-5-2019
PROJECT NO 16063

REVISIONS

NO	DATE	DESCRIPTION

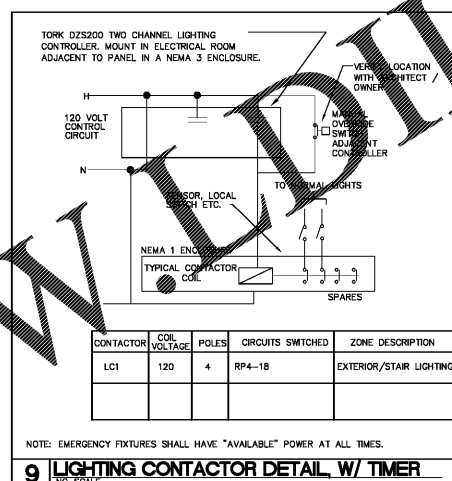
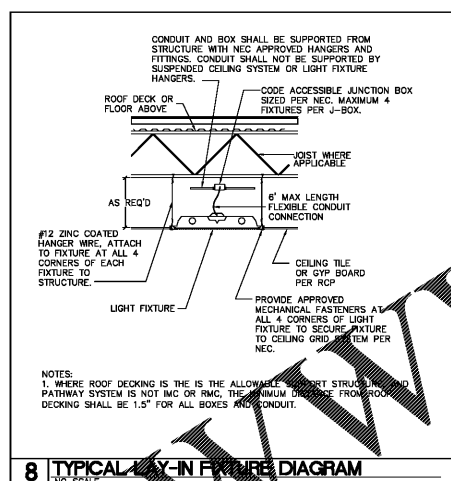
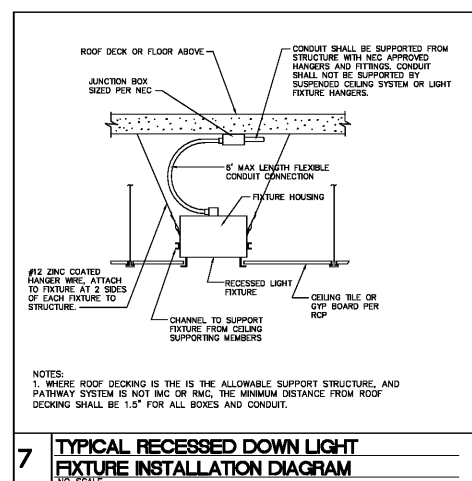
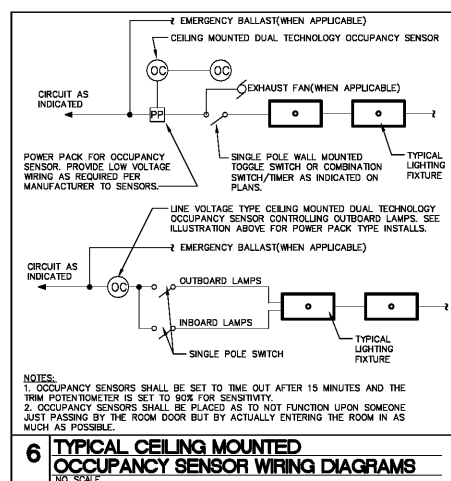
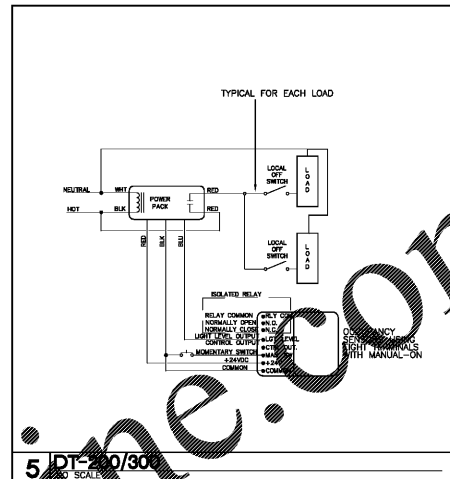
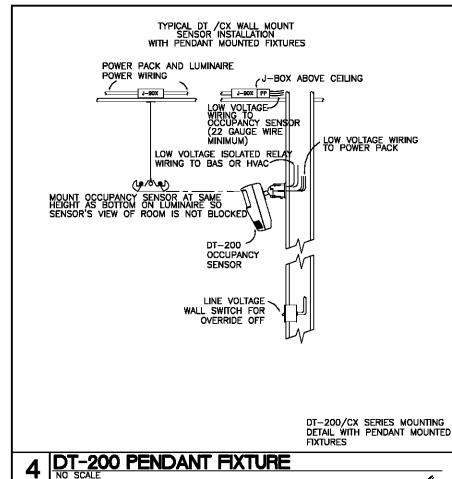
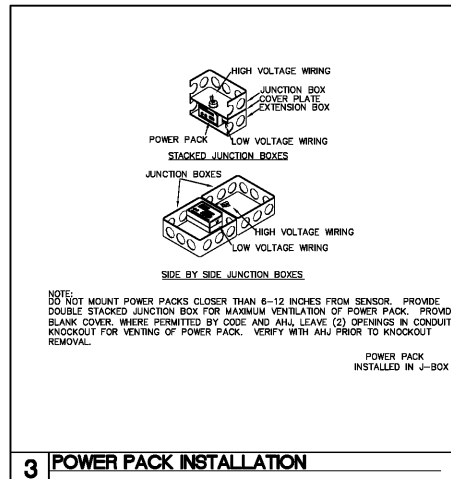
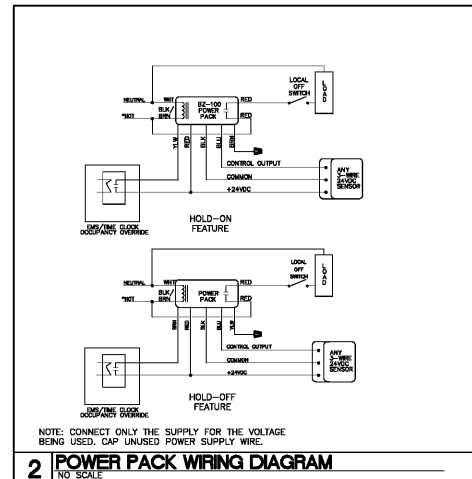
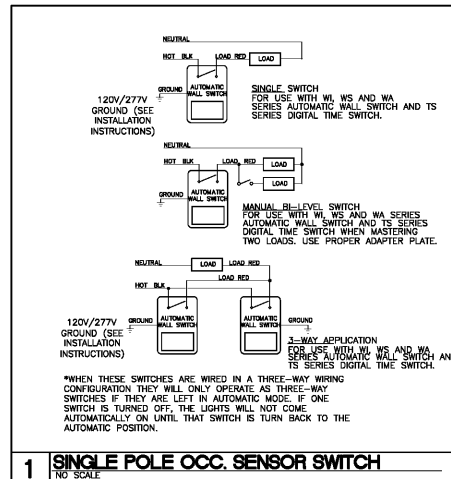
THIS DRAWING IS THE PROPERTY OF ADW ARCHITECTS, P.A. AND SHALL NOT BE REPRODUCED OR COPIED IN WHOLE OR IN PART, IT SHALL NOT BE USED ON ANY OTHER PROJECT OR GIVEN TO ANY OTHER COMPANY OR AGENCY WITHOUT THE CONSENT OF ADW ARCHITECTS, P.A.



SEAL DATE: 04/02/19

SHEET NUMBER
4 OF 16
OPTIMA # 17-0017

E004



Order Plans @