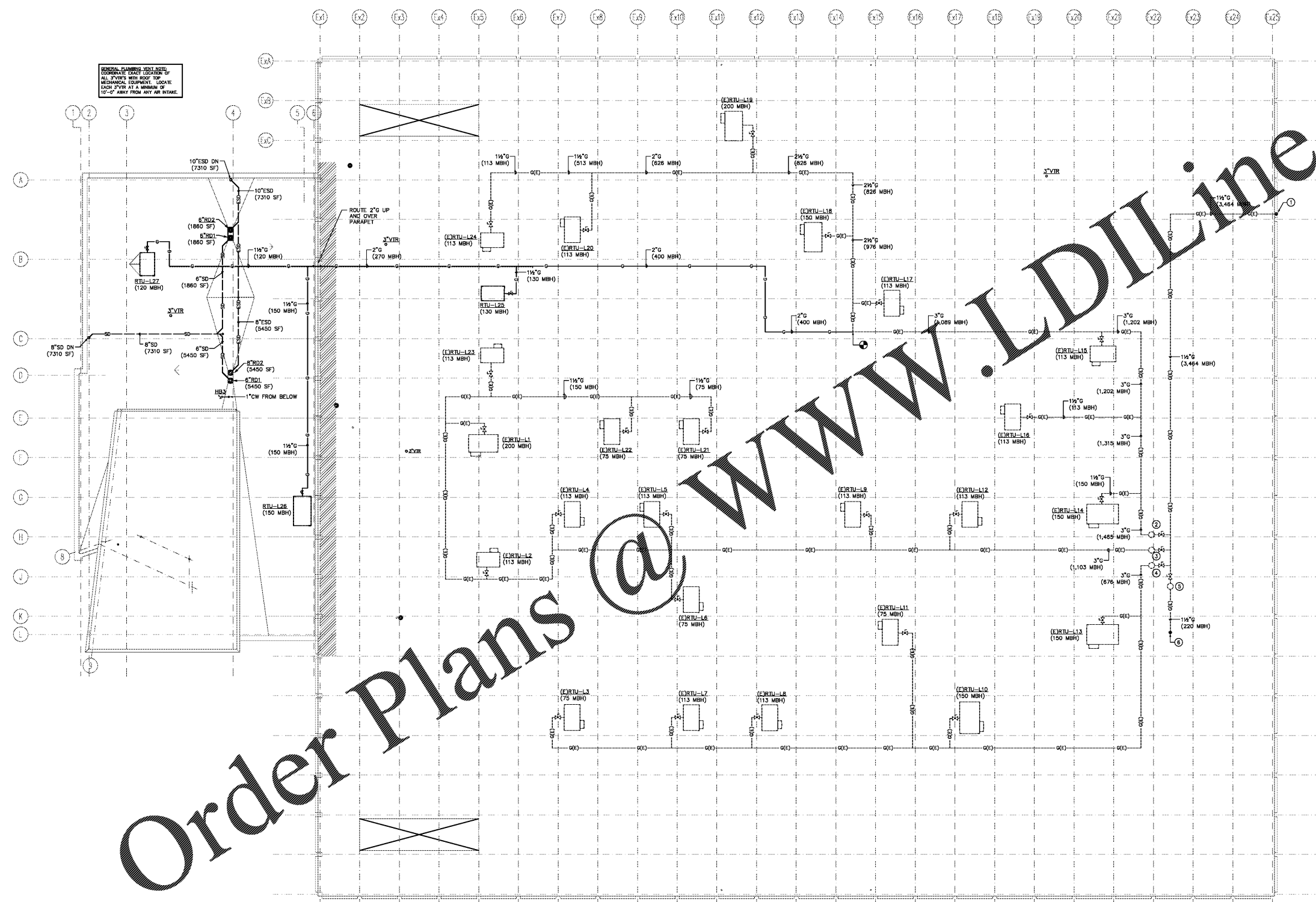


- KEYED PLUMBING NOTES**
- EXISTING 1/4" GAS PIPING FROM BELOW TO EXISTING GAS METER AT GRADE LEVEL. VERIFY EXISTING GAS METER SIZE FOR NEW TOTAL LOAD OF 3,484 MBH, 5 PSI DELIVERY PRESSURE, 550 FT TO MOST REMOTE FIXTURE. REPLACE METER IF REQUIRED FOR NEW GAS LOAD.
 - EXISTING GAS SHUT-OFF VALVE AND REGULATOR, 5 PSI TO 14" W.C., 1,465 MBH, 400 FT TO MOST REMOTE FIXTURE.
 - EXISTING GAS SHUT-OFF VALVE AND REGULATOR, 5 PSI TO 14" W.C., 1,103 MBH, 300 FT TO MOST REMOTE FIXTURE.
 - EXISTING GAS SHUT-OFF VALVE AND REGULATOR, 5 PSI TO 14" W.C., 876 MBH, 200 FT TO MOST REMOTE FIXTURE.
 - EXISTING GAS SHUT-OFF VALVE AND REGULATOR, 5 PSI TO 14" W.C., 220 MBH, 100 FT TO MOST REMOTE FIXTURE.
 - EXISTING 1/4" GAS DOWN TO EXISTING LAB

SPECIAL PLUMBING NOTE:
 CORRELATE EACH LOCATION OF ALL 3" VPI'S WITH ROOF TOP MECHANICAL EQUIPMENT. LOCATE EACH 3" VPI AT A MINIMUM OF 12'-0" AWAY FROM ANY AIR INTAKE.



Order Plans @

1 ROOF PLAN - PLUMBING
 3/32" = 1'-0"
 0' 8' 16'

adwarchitects
 environmentsforlife
 architecture planning interiors
 8 coliseum centre,
 2815 coliseum drive, suite 500
 charlotte, north carolina 28217
 t| 704 379 1919
 f| 704 379 1920
 www.adwarchitects.com



SCO #16-15889-02A

**RICHMOND
 COMMUNITY
 COLLEGE**

LEE BUILDING
 STUDENT SERVICES &
 CAREER CENTER
 VOL.2

BID DOCUMENTS

**ROOF PLAN -
 PLUMBING**

DATE 4-5-2019
 PROJECT NO 16063

REVISIONS

NO	DATE	DESCRIPTION

THIS DRAWING IS THE PROPERTY OF ADW ARCHITECTS, P.A. AND SHALL NOT BE REPRODUCED OR COPIED IN WHOLE OR IN PART. IT SHALL NOT BE USED ON ANY OTHER PROJECT OR GIVEN TO ANY OTHER COMPANY OR AGENCY WITHOUT THE CONSENT OF ADW ARCHITECTS, P.A.



SHEET NUMBER **P102**
 6 OF 7
 OPTIMA # 17-0017