



STEWART
101 N TRYON ST SUITE 1400 CHARLOTTE, NC 28202
704.334.7925 FIRM LICENSE #C-1051 S18017



SCO #16-15889-02A
**RICHMOND
COMMUNITY
COLLEGE**

LEE BUILDING
STUDENT SERVICES &
CAREER CENTER
VOL.2

BID DOCUMENTS

FOUNDATION PLAN

DATE: 4-5-2019
PROJECT NO: 16063

REVISIONS
NO. DATE DESCRIPTION:

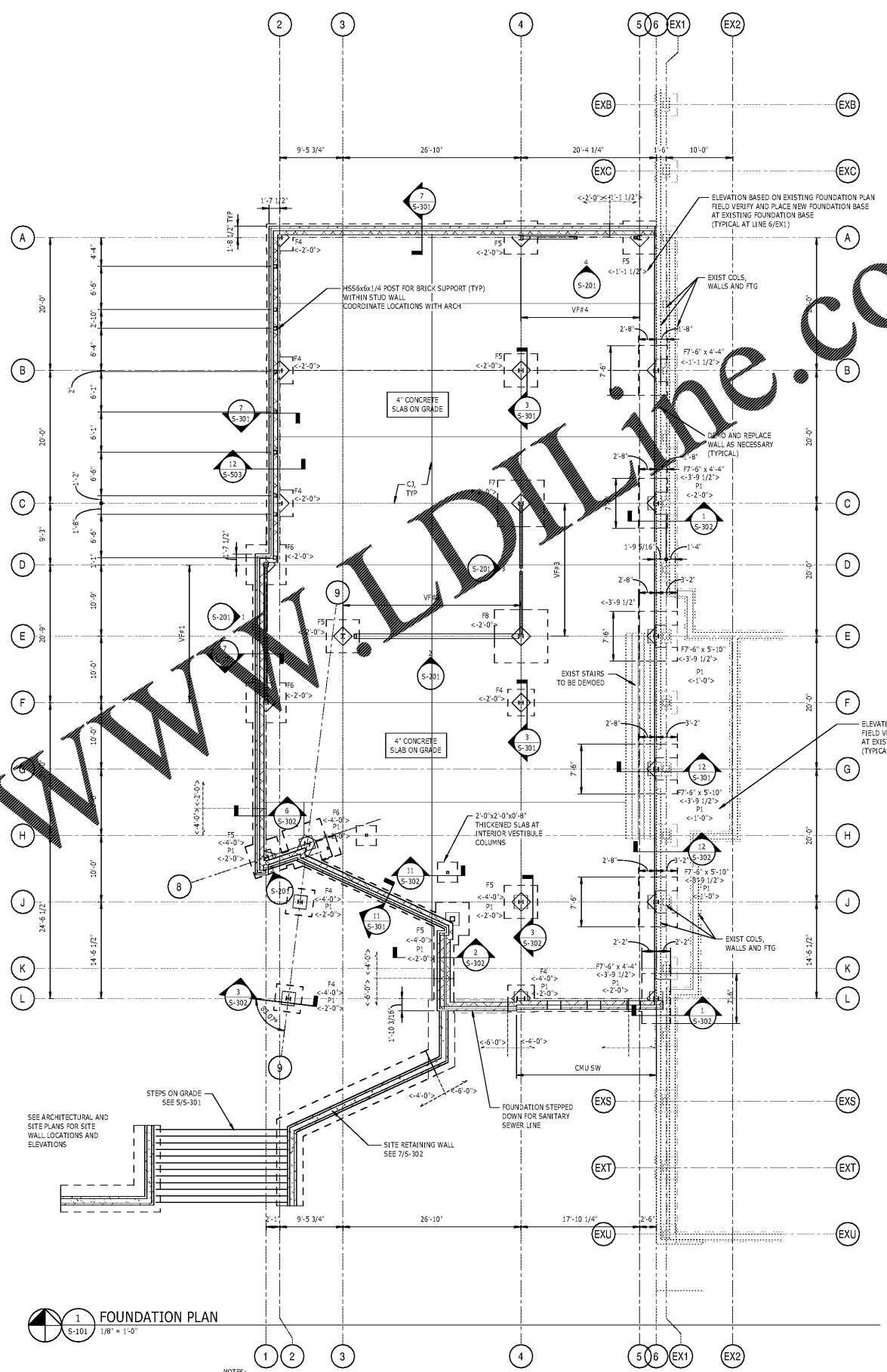
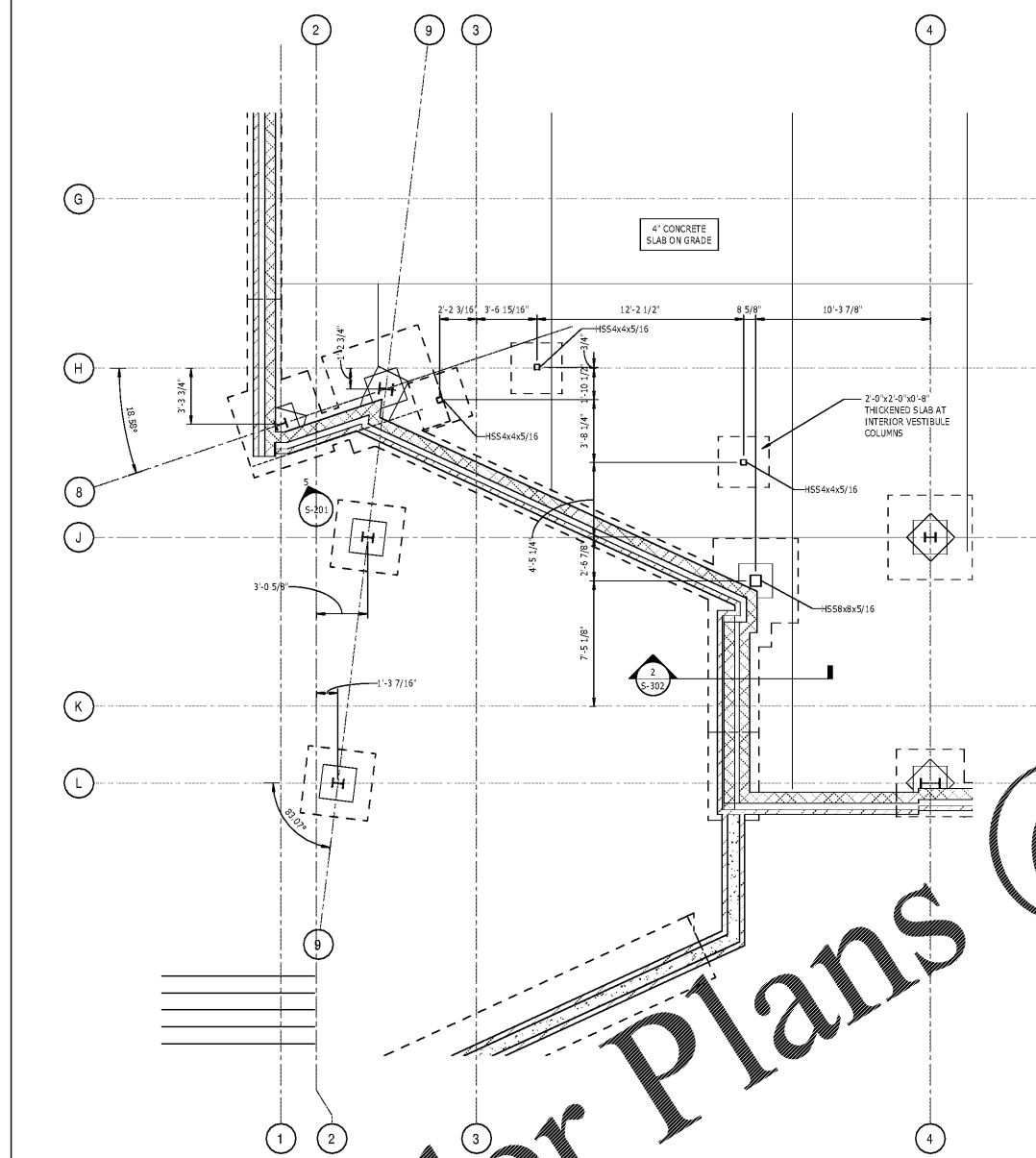
THIS DRAWING IS THE PROPERTY OF ADW ARCHITECTS, P.A. AND SHALL NOT BE REPRODUCED OR COPIED IN WHOLE OR PART. IT SHALL NOT BE USED ON ANY OTHER PROJECT OR GIVEN TO ANY OTHER COMPANY OR AGENCY WITHOUT THE CONSENT OF ADW ARCHITECTS, P.A.



04/05/2019

SHEET NUMBER

S-101



- NOTES:
1. FOR GENERAL NOTES AND ABBREVIATIONS, SEE S-001.
 2. SEE CIVIL DRAWINGS FOR FINISHED FLOOR ELEVATION, UNO. REFERENCE ELEVATION 0'-0".
 3. (No.) INDICATES DERESSED OR BASED SLAB ELEVATION, SEE PLAN.
 4. TOP OF FOOTING 2'-0" BELOW FINISHED FLOOR ELEVATION, UNO. <No> INDICATES TOP OF FOOTING ELEVATION, SEE PLAN.
 5. "F" INDICATES STEP IN WALL FOOTING, SEE 2/5-301.
 6. "F#" INDICATES FOOTING TYPE, SEE 9/5-301.
 7. FOR TYPICAL SLAB CONSTRUCTION DETAILS, SEE 1/5-301.
 8. SEE ELEVATION MARKS ON PLAN AND S-201 FOR VERTICAL FRAME ELEVATIONS AND DETAILS.
 9. CONTRACTOR TO COORDINATE ALL THICKENED SLAB LOCATIONS UNDER CMU PARTITIONS WITH ARCHITECTURAL DRAWINGS.
 10. FOR STEEL COLUMN SCHEDULE, SEE 1/5-302.
 11. "FP#" INDICATES CONCRETE PEDESTAL TYPE, SEE 2/5302. TOP OF PEDESTAL ELEVATION -12" BELOW FINISHED FLOOR ELEVATION, UNO. [No.] INDICATES TOP OF PEDESTAL ELEVATION, SEE PLAN.
 12. "CJ" INDICATES CONTROL JOINT, SEE 1/5-301 FOR DETAIL.

Order Plans @

WWW.DIline.com