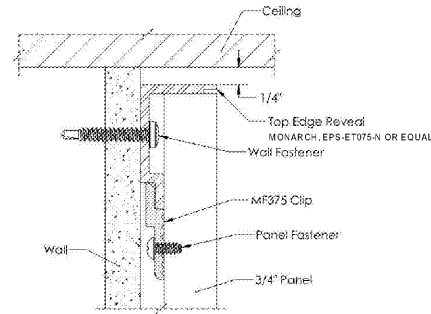
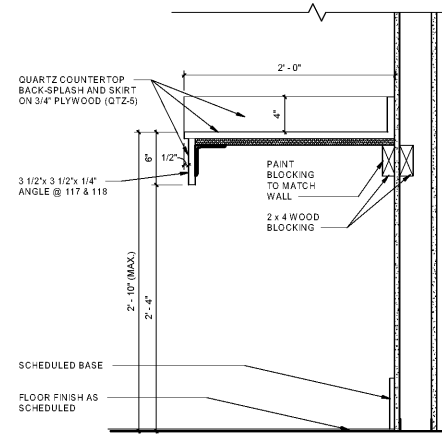


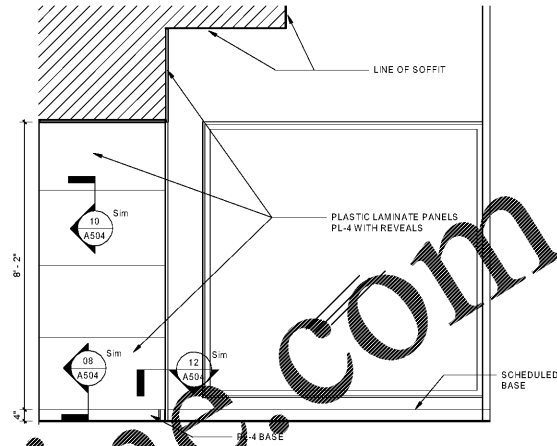
OUTSIDE CORNER- 3/4" PANEL | 1/2" = 1'-0" | 12



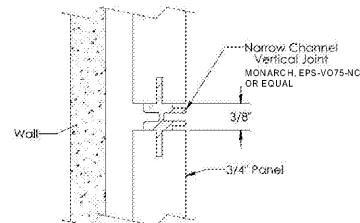
TOP OR EDGE CORNER | 1/2" = 1'-0" | 09



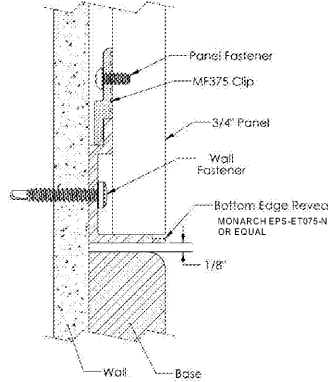
SECTION @ COUNTER | 1/2" = 1'-0" | 06



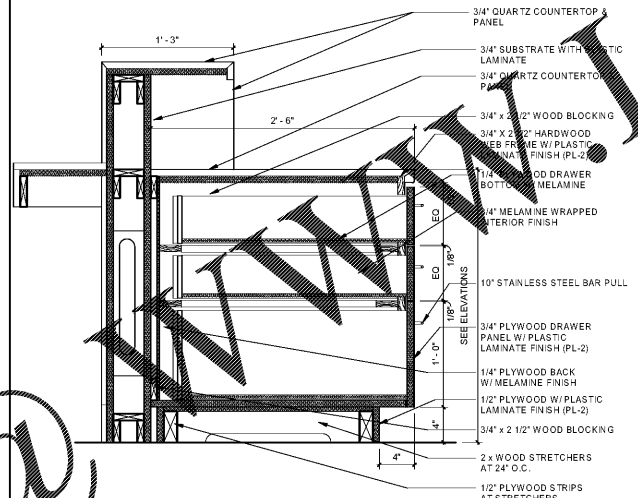
ELEVATION - WAITING B | 1/2" = 1'-0" | 03



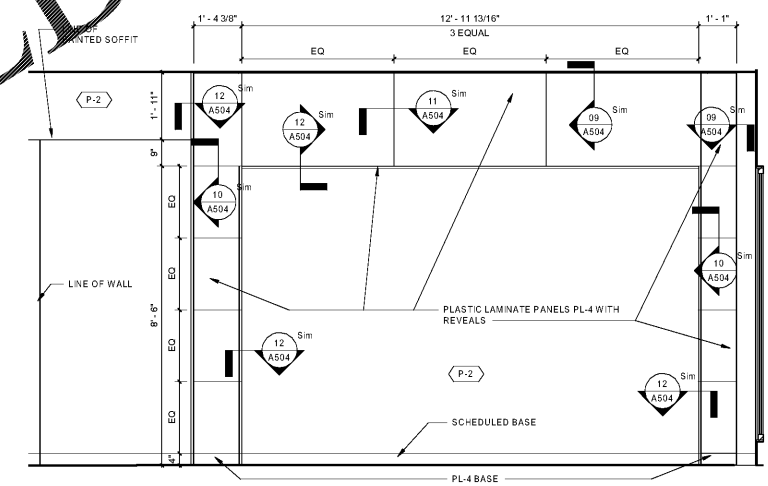
3/8" VERTICAL REVEAL | 1/2" = 1'-0" | 11



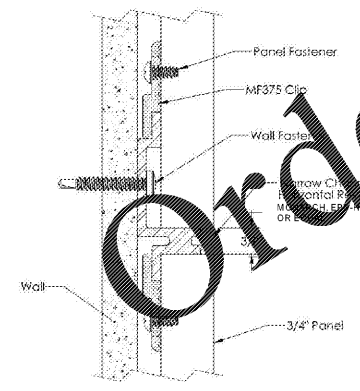
BOTTOM EDGE AT FLOOR BASE | 1/2" = 1'-0" | 08



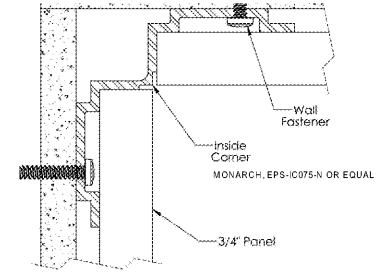
CASEWORK SECTION | 1/2" = 1'-0" | 05



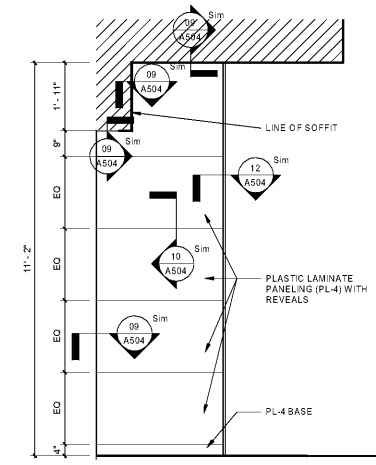
ELEVATION - WAITING A | 1/2" = 1'-0" | 02



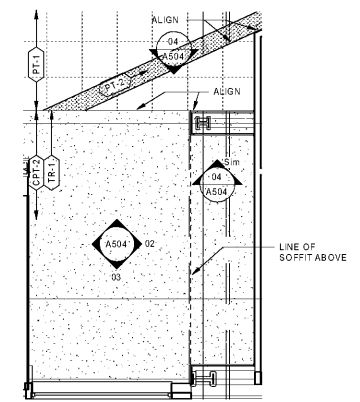
3/8" HORIZONTAL REVEAL | 1/2" = 1'-0" | 10



SECTION - INSIDE CORNER | 1/2" = 1'-0" | 07



ELEVATION - WAITING COLUMN | 1/2" = 1'-0" | 04



ENLARGED PLAN - WAITING | 1/4" = 1'-0" | 01



SCO #16-15889-02A  
RICHMOND  
COMMUNITY  
COLLEGE

LEE BUILDING STUDENT  
SERVICES & CAREER  
CENTER VOL.2

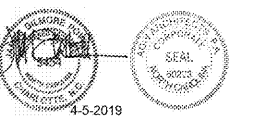
BID DOCUMENTS

ENLARGED PLAN,  
ELEVATIONS & DETAILS

DATE: 04.05.2019  
PROJECT NO: 16063

REVISIONS  
NO: DATE: DESCRIPTION:

THIS DRAWING IS THE PROPERTY OF ADW ARCHITECTS, P.A. AND SHALL NOT BE REPRODUCED OR COPIED IN WHOLE OR PART. IT SHALL NOT BE USED ON ANY OTHER PROJECT OR GIVEN TO ANY OTHER COMPANY OR AGENCY WITHOUT THE CONSENT OF ADW ARCHITECTS, P.A.



SHEET NUMBER

**A504**