

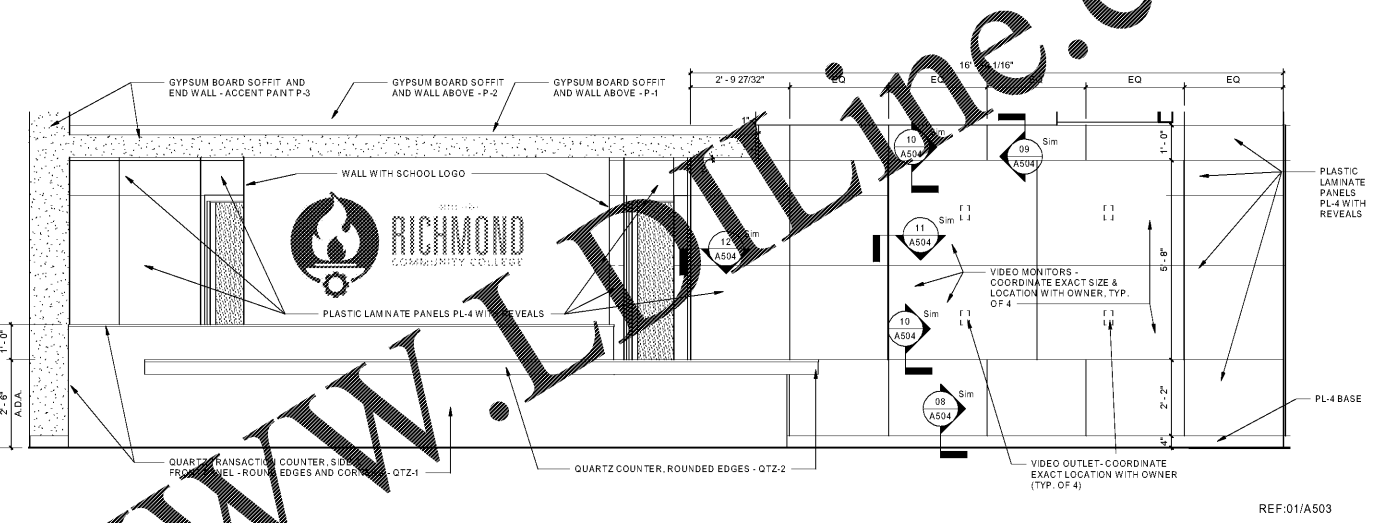
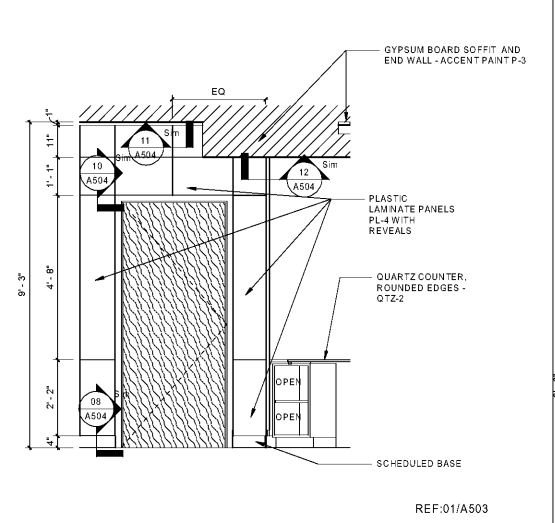
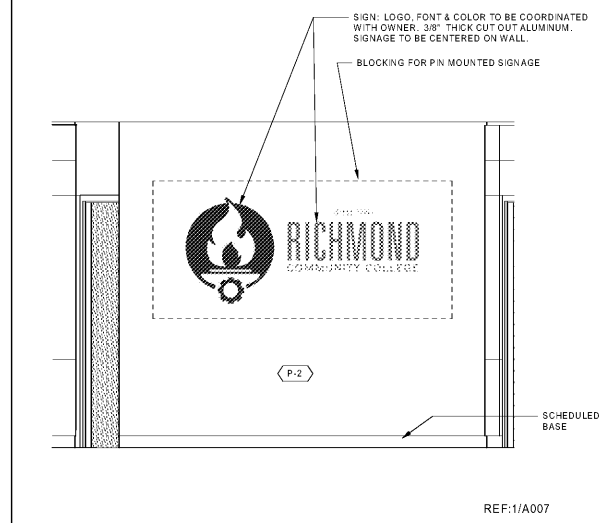
ELEVATION - CORR. D 151 | 1/2" = 1'-0" | 13

ELEVATION - RECEPTION C | 1/2" = 1'-0" | 10

ELEVATION - COMP 147 | 1/2" = 1'-0" | 07

ELEVATION - RECEPTION 101 - B | 3/4" = 1'-0" | 04

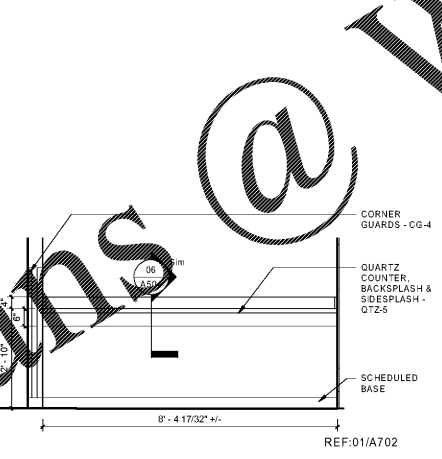
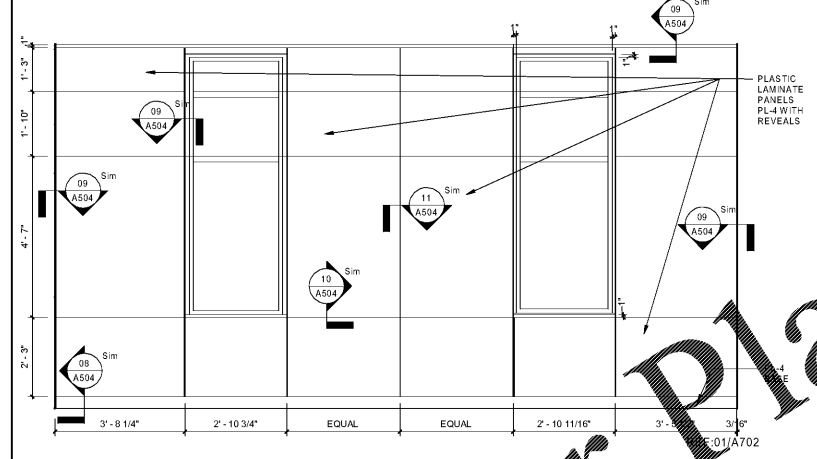
ELEVATION - LOBBY 102 - DESK | 1/2" = 1'-0" | 03



ELEVATION - RECEPTION D | 1/2" = 1'-0" | 12

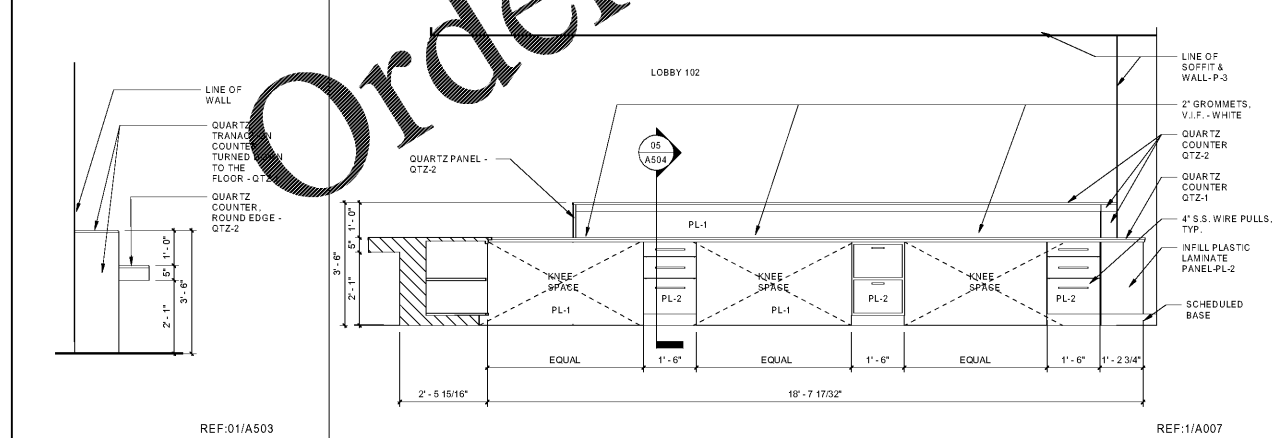
ELEVATION - RECEPTION B | 1/2" = 1'-0" | 09

ELEVATION - LOBBY 102 | 1/2" = 1'-0" | 02



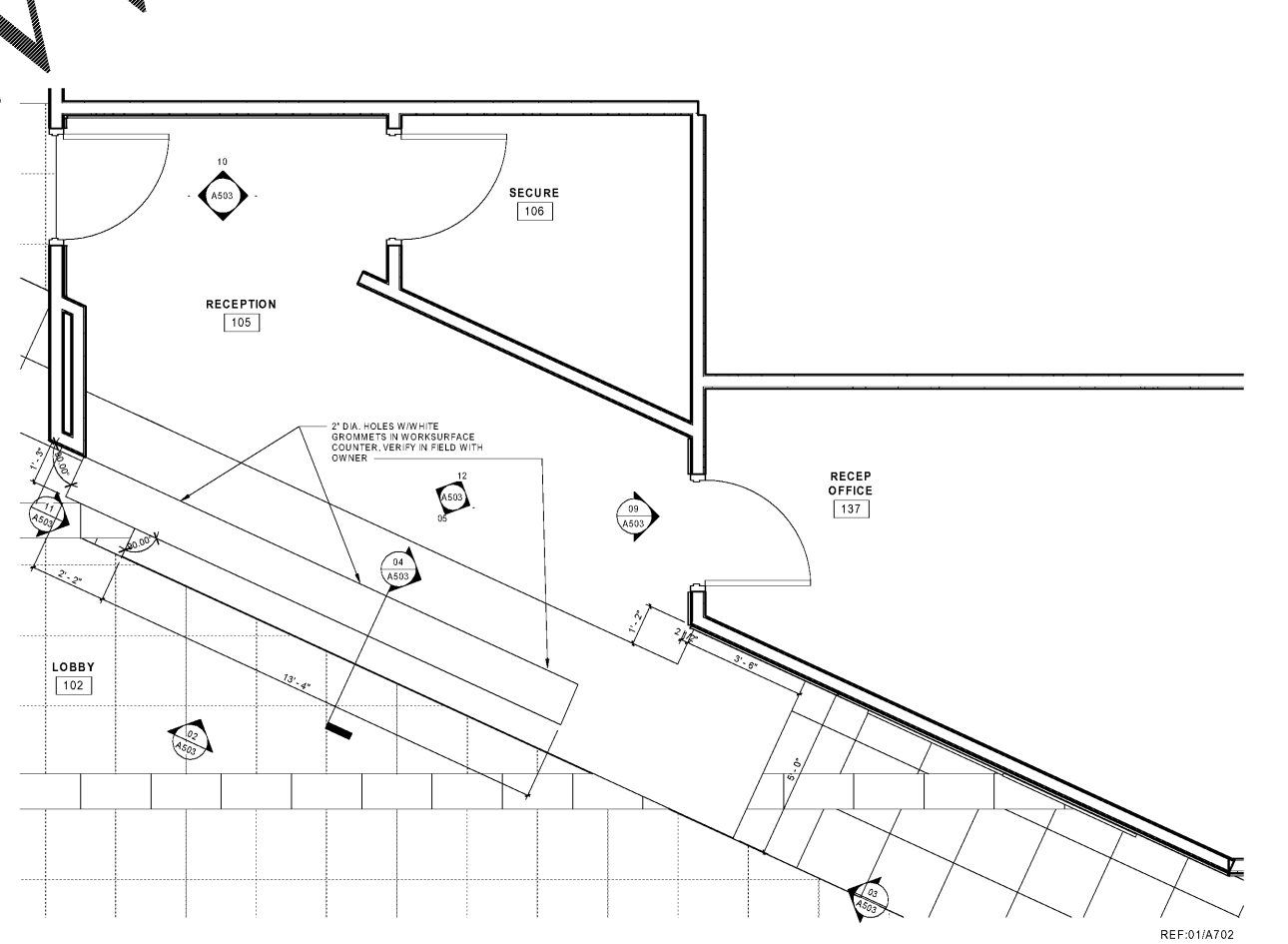
ELEVATION - WAITING 103 | 1/2" = 1'-0" | 08

ELEVATION - CORRIDOR D | 1/2" = 1'-0" | 06



LOBBY DESK | 1/2" = 1'-0" | 11

ELEVATION - RECEPTION 101 - A | 1/2" = 1'-0" | 05



ENLARGE PLAN - RECEPTION 105 | 1/2" = 1'-0" | 01

Order Plans @

WWW.LDLINE.COM



SCO #16-15889-02A  
RICHMOND  
COMMUNITY  
COLLEGE

LEE BUILDING STUDENT  
SERVICES & CAREER  
CENTER VOL.2

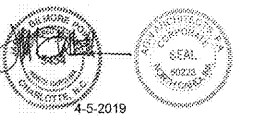
BID DOCUMENTS

ENLARGED PLAN,  
ELEVATIONS AND  
SECTIONS

DATE: 04.05.2019  
PROJECT NO: 16063

REVISIONS  
NO: DATE: DESCRIPTION:

THIS DRAWING IS THE PROPERTY OF ADW ARCHITECTS, P.A. AND SHALL NOT BE REPRODUCED OR COPIED IN WHOLE OR PART. IT SHALL NOT BE USED ON ANY OTHER PROJECT OR GIVEN TO ANY OTHER COMPANY OR AGENCY WITHOUT THE CONSENT OF ADW ARCHITECTS, P.A.



SHEET NUMBER

A503