

PLANT SCHEDULE STUDENT SERVICES

TREES	QTY	BOTANICAL NAME / COMMON NAME	ROOT	CAL.	REMARKS	SIZE
LI	4	Lagerstroemia indica x faurei 'Natchez' / Natchez Crape Myrtle	B & B	1.5" Cal	3-5 stems	8'-10" HT.
PO	1	Prunus x okame / Okame Cherry	B & B	2" Cal	MATCHED, STRAIGHT	6'-8" HT.
SHRUBS	QTY	BOTANICAL NAME / COMMON NAME	CONT	REMARKS	HEIGHT	SPREAD
DV	23	Dasylirion x Vintage Jade / Vintage Jade Dasylirion	3 gal	4.5" O.C.	15-18" HT.	18-24"
LC2	16	Loropetalum chinense 'Daruma' / Daruma Dwarf Loropetalum	3 gal	3" O.C.	15-18" HT.	15-18"
LC3	19	Loropetalum chinense 'Ruby' / Ruby Loropetalum	5 gal	4.5" O.C.	18-24" HT.	18-24"
MG2	14	Mandarin sinensis 'Gracillimus' / Maiden Grass	3 gal	3.5" O.C.	18-24" HT.	18-24"
ND	14	Nandina domestica 'Gulf Stream' TM / Heavenly Bamboo	3 gal	3" O.C.	15-18" HT.	15-18"
PS	6	Prunus laurocerasus 'Schipkaensis' / Schipka Laurel	5 gal	2" O.C.	24-30" HT.	24-30"
GROUND COVERS	QTY	BOTANICAL NAME / COMMON NAME	CONT	REMARKS	SPACING	
LM	421	Liriope muscari 'Big Blue' / Big Blue Liriope	4" pot	15" O.C.		
VM	100	Vincetoxicum / Common Periwinkle	4" pot	16" O.C.	16" O.C.	

LANDSCAPE NOTES

- PLANT MATERIAL**
- MINIMUM TREE SIZE AT PLANTING IS 2" CALIPER AND 2' TALL FOR SINGLE-STEM TREES. ALL MULTI-STEM PLANTS MUST BE TREE FORM, MINIMUM 3 TO 5 TRUNKS AND MINIMUM 10' TALL.
 - ALL NEW TREES MUST HAVE STRAIGHT TRUNKS WITH STRONG CENTRAL LEADERS INTACT TO THE TOP OF THE CROWN UNLESS MULTI-STEM TREES ARE SPECIFIED. ALL TREES SHALL BE TYPICAL OF THEIR SPECIES AND VARIETY, HAVE NORMAL GROWTH HABITS, HAVE WELL-DEVELOPED BRANCHES, BE VIGOROUS AND HAVE PROFOUND ROOT SYSTEMS. TREES WITH CO-DOMINANT BRANCHING WILL NOT BE ACCEPTED. TREES THAT HAVE BEEN REBARRED, TOPPED OR CUT BACK TO MULTIPLY THE BRANCHING STRUCTURE WILL NOT BE ACCEPTED. TREES SHALL BE FREE OF ABNORMAL DAMAGE, DISEASE, FEEDS AND GRACKS. ALL PRUNING CUTS GREATER THAN 2" DIAMETER SHALL HAVE CALLUS TISSUE FORMED PRIOR TO PLANTING. NO PRUNING CUT ON THE TRUNK SHALL BE MORE THAN ONE-HALF THE THICKNESS OF THE CENTRAL LEADER AT THE HEIGHT WHERE THE CUT WAS MADE. ROOT FLARES SHALL BE LOCATED AT GRADE. TREES WITH MORE THAN 2" OF SOIL COVERING THE ROOT BALL/FLARE FROM WILL NOT BE ACCEPTED.
 - SIZE OF PLANTS, SPREAD OF ROOTS AND SIZE OF BALLS SHALL BE IN ACCORDANCE WITH ANSI Z60.1 (LATEST EDITION) AS PUBLISHED BY THE AMERICAN NURSERY & LANDSCAPE ASSOCIATION.
 - ALL TREES OF A PARTICULAR SPECIES AND VARIETY SHALL BE UNIFORM IN SIZE AND CONFIGURATION.
- PLANTING REQUIREMENTS**
- PLASTIC HOSE PARTS WILL NOT BE ACCEPTED FOR TREE STAKING. SEE DETAILS AND SPECIFICATIONS FOR APPROVED STAKING METHOD/MATERIALS.
 - ALL STRIPPINGS AND TOP 3" OF WIRE BASKET AND BURLAP MUST BE CUT AWAY AND REMOVED FROM ROOT BALL WHEN PLANTING.
 - FOR NEW PLANTING AREAS, REMOVE ALL PAVEMENT, GRAVEL SUB-BASE AND CONSTRUCTION DEBRIS; REMOVE COMPACTED SOIL AND ADD 2" NEW TOPSOIL, OR TILL AND AMEND THE TOP 24" OF EXISTING SOIL TO MEET TOPSOIL/PLANTING MIX STANDARDS FOR TREES.
 - ALL SAUCERS SHALL BE SOAKED WITH WATER AND MULCHED IMMEDIATELY FOLLOWING PLANTING.
 - THE TOP OF ALL ROOT BALLS FOR SHRUBS & GROUNDCOVERS SHALL BEAR THE SAME RELATIONSHIP TO FINISHED GRADE AS BORN TO PREVIOUS GROWING CONDITIONS.
 - ALL ROOT BALLS REMOVED FROM CONTAINERS SHALL BE SOAKED PRIOR TO BACKFILLING.
 - MULCH A MINIMUM 4" FOOT AREA AROUND EACH TREE AND - MULCH A CONTIGUOUS AREA AROUND ALL SHRUB BEDS, AS INDICATED ON THE PLAN. MULCH SHALL BE 3"-4" THICK. MULCH AROUND TREES SHALL BE TAPERED TOWARD TRUNK SO THAT NO MORE THAN 2" IS PLACED AT TREE TRUNK AS SHOWN ON DETAIL. SEE SPECIFICATIONS FOR TYPE.
- UTILITY ISSUES**
- LARGE MATURING TREES MAY NOT BE PLANTED WITHIN 20' OF OVERHEAD POWER DISTRIBUTION OR TRANSMISSION LINES. IF TREES CONTACT WITH POWER LINES OR SHAW, CALL LANDSCAPE ARCHITECT TO RESOLVE BEFORE PLANTING.
 - CONTRACTOR IS RESPONSIBLE FOR MARKING ALL UNDERGROUND UTILITIES LOCATED AND CLEARLY PAINTED WITHIN 10 DAYS OF ANY GROUND DISTURBING ACTIVITY. OWNER WILL NOT PAY FOR UTILITY REPAIRS DUE TO FAILURE TO MARK AND OBSERVE UTILITY LOCATIONS.
 - ADJUST TREE PLANTING LOCATIONS TO AVOID UNDERGROUND UTILITIES - PLANT 15' FROM ALL UNDERGROUND UTILITIES (SEWER AND STORM DRAINAGE, GAS WATER, PHONE AND ELECTRICAL LINES).
- GENERAL**
- THE LANDSCAPE CONTRACTOR SHALL BE RESPONSIBLE FOR THE QUANTITY OF PLANTS SHOWN ON THE PLAN. ANY DISCREPANCIES BETWEEN QUANTITIES ON PLAN AND PLANT LIST SHALL BE BROUGHT TO THE ATTENTION OF THE LANDSCAPE ARCHITECT AND ANY FIELD ADJUSTMENTS OR QUANTITY ADJUSTMENTS MUST BE AUTHORIZED PRIOR TO PLANTING.
 - ALL PLANTS SHALL BE GUARANTEED TO BE IN HEALTHY CONDITION FOR ONE (1) YEAR AFTER ACCEPTANCE BY OWNER OF ALL PLANT MATERIAL.
 - ALL DISTURBED AREAS SHALL BE RESEED AS SPECIFIED.
 - SEE EROSION CONTROL/GRADING PLAN FOR ADDITIONAL TREE PRESERVATION NOTES.
 - CONTRACTOR SHALL REMOVE ALL GRAVEL PLACED WITHIN THE CONSTRUCTION AREA PRIOR TO RESEEDING & SOILING. SOIL SHALL BE CONDITIONED (DOZING & AMENDING) FOR THE PROJECT SPECIFICATIONS.
- IRRIGATION**
- CONTRACTOR SHALL MODIFY THE EXISTING IRRIGATION SYSTEM AND ADD TO IT AS NECESSARY TO SHUT OFF IRRIGATION TO THE CONSTRUCTION AREA WHILE MAINTAINING IRRIGATION TO AREAS THAT ARE OUTSIDE THE CONSTRUCTION AREA AND ARE PRESENTLY BEING IRRIGATED.
 - CONTRACTOR SHALL PROVIDE IRRIGATION TO ALL NEW BOD AND LANDSCAPE MATERIAL.

LEGEND

- SIGN
- ⊙ EXISTING LIGHT POLE
- ⊙ EXISTING UTILITY POLE
- HC ACCESSIBLE SPACE
- ⊙ EXISTING FIRE HYDRANT
- ⊙ EXISTING TREE TO REMAIN
- ▨ PROPOSED GROUNDCOVER
- ⊙ PLANT LABEL
- ⊙ PLANT QUANTITY
- EXISTING CURB AND GUTTER
- PROPOSED CURB AND GUTTER
- PROPERTY LINE
- EXISTING FENCE
- PROPOSED FENCE
- EXISTING UNDERGROUND ELECTRIC LINE
- CH/U EXISTING OVERHEAD UTILITY LINE
- EXISTING TREE LINE
- PROPOSED TREE LINE AFTER CLEARING
- PROPOSED MULCH LINE
- PROPOSED STORM DRAINAGE PIPE
- PROPOSED FOUNDATION DRAIN
- SANITARY SEWER LINE
- WATER LINE



Know what's below.
Call before you dig.

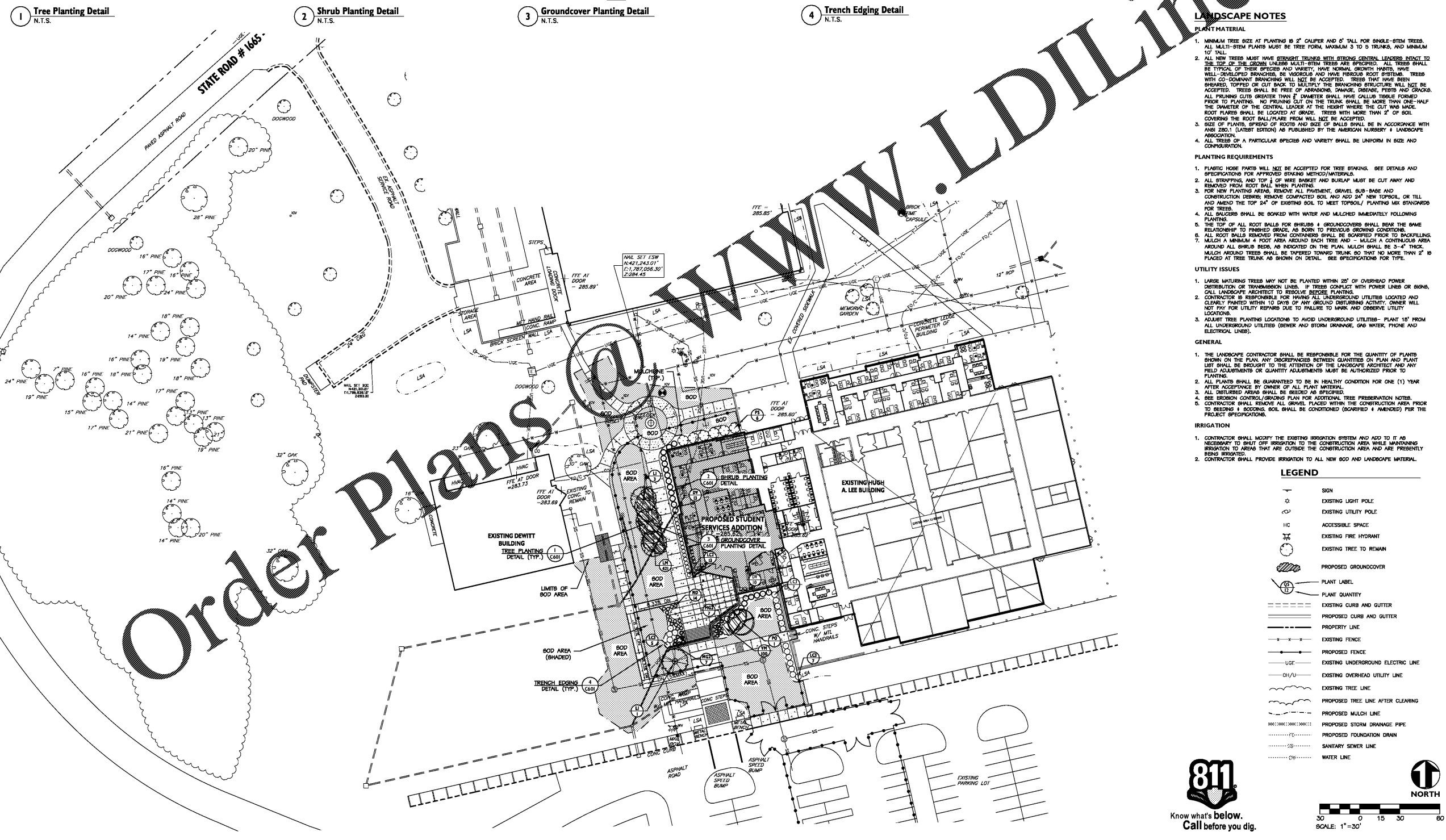
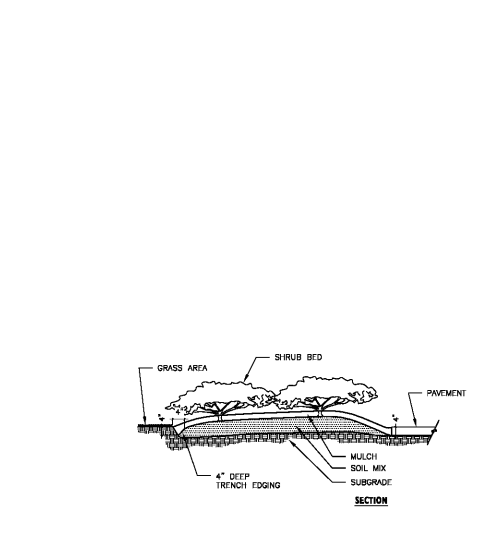
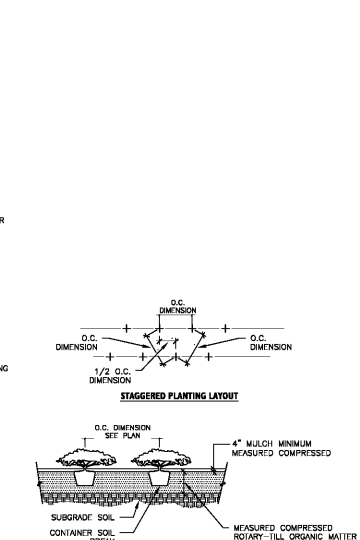
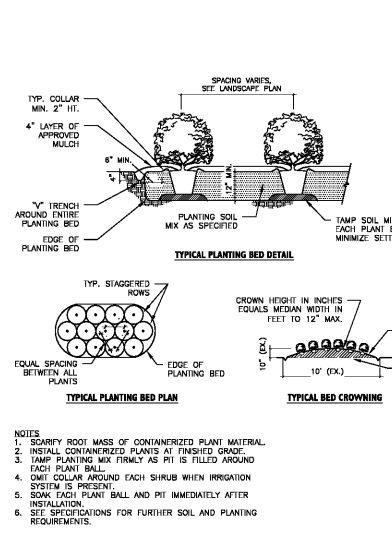
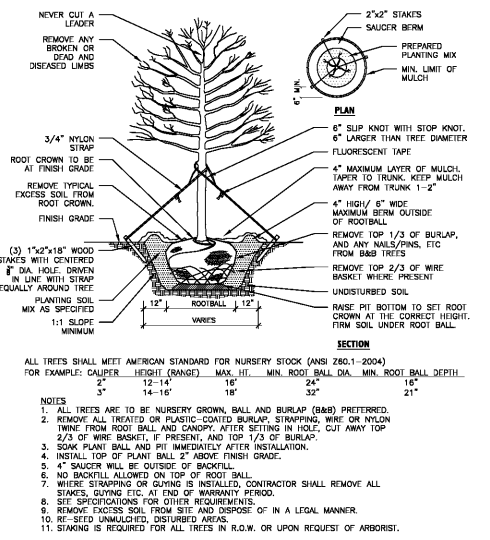


SEAL



4/5/19

SHEET NUMBER C600



Order Plans @

WWW.LDILine.com