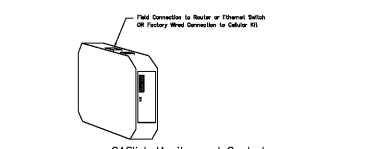


NO.	TAG	PACKAGE #	LOCATION	SWITCHES	QUANTITY	OPTION	FANS CONTROLLED
1		DCV-1111	Utility Cabinet Left	03 - Utility Cabinet Left Hood # 1	1 Light	Smart Controls DCV	Exhaust 3, 3,000 208 18.8 Supply 3, 3,000 208 18.8
2		DCV-1111	Utility Cabinet Left	03 - Utility Cabinet Left Hood # 2	1 Light	Smart Controls DCV	Exhaust 3, 3,000 208 18.8 Supply 3, 3,000 208 18.8



CASlink Monitor and Control

Hood control panel to support communications to cloud-based Building Management System.

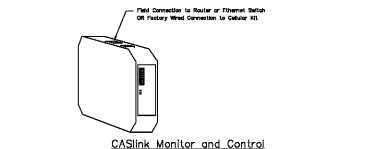
Hood Control Panel to allow cloud-based Building Management System to monitor and control parameters outlined as MONITOR in the points list.

Hood Control Panel to allow cloud-based Building Management System to control parameters outlined as CONTROL in the points list.

Hood control panel to allow remote changes to system setting such as VFD Frequencies, ECM speeds, temperature set points, fan and wash schedules, etc.

MONITORING AND CONTROL POINTS LIST

DCV Package	Function	SD Package	Function
Room Temperature	MONITOR	Room Temperature	MONITOR
Duct Temperature	MONITOR	Duct Temperature	MONITOR
Wash Discharge Temperature	MONITOR	Wash Discharge Temperature	MONITOR
Wash WFO Discharge Temperature	MONITOR	Wash WFO Discharge Temperature	MONITOR
Fan Speed	MONITOR	Exhauster Fan	MONITOR
Fan Ampage	MONITOR	Fan Status	MONITOR
Fan Phase	MONITOR	Fan Status	MONITOR
VFD Faults	MONITOR	VFD Faults	MONITOR
Contactor Faults	MONITOR	VFD Fan Stop Percentage	MONITOR
Fan Faults	MONITOR	The Condition	MONITOR
Fan Status	MONITOR	CMR The System	MONITOR
Fan Phase	MONITOR	CMR The System	MONITOR
VFD Fan Stop Percentage	MONITOR	Fan Button	MONITOR & CONTROL
The Condition	MONITOR	Light Button	MONITOR & CONTROL
CMR The System	MONITOR	Wash Button	MONITOR & CONTROL
Building Presence	MONITOR		
Prep Time Button	MONITOR & CONTROL		
Fan Button	MONITOR & CONTROL		
Light Button	MONITOR & CONTROL		
Wash Button	MONITOR & CONTROL		



CASlink Monitor and Control

Hood control panel to support communications to cloud-based Building Management System.

Hood Control Panel to allow cloud-based Building Management System to monitor and control parameters outlined as MONITOR in the points list.

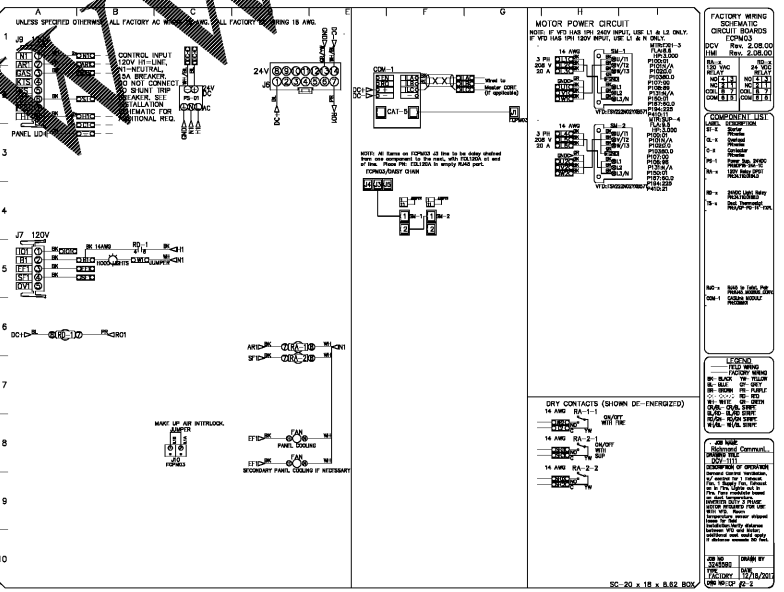
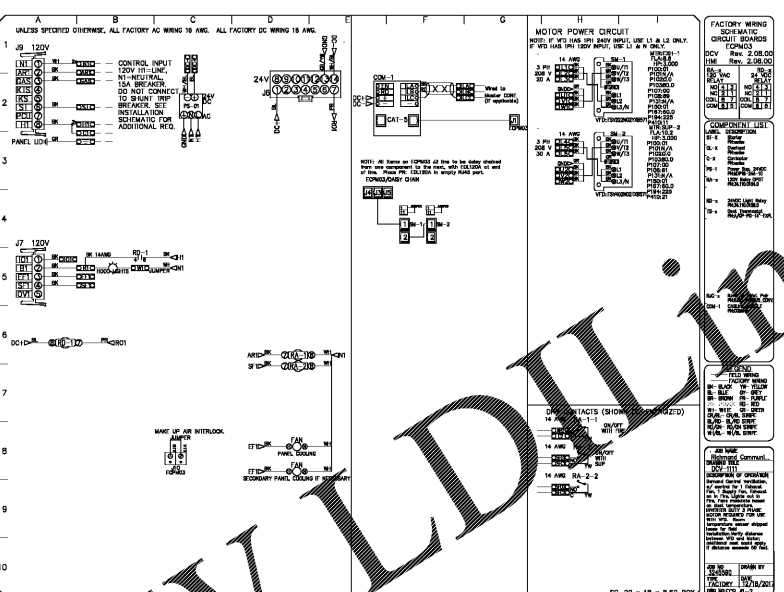
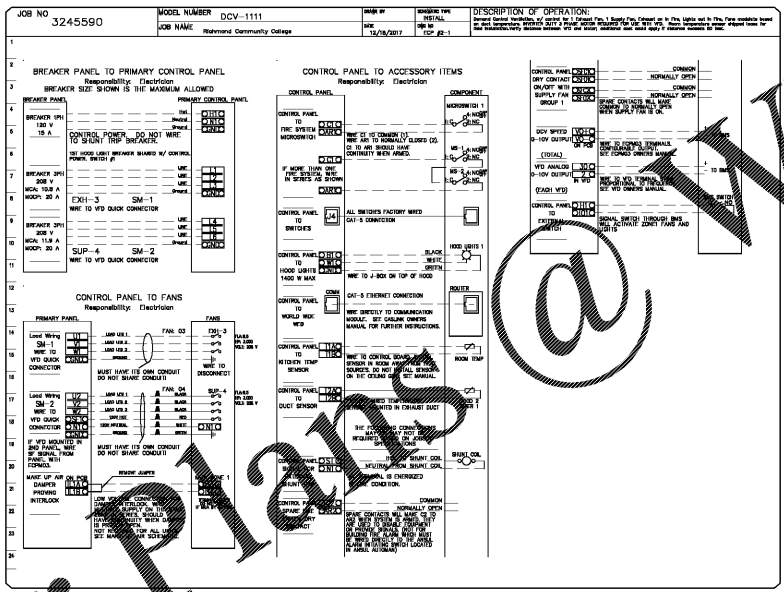
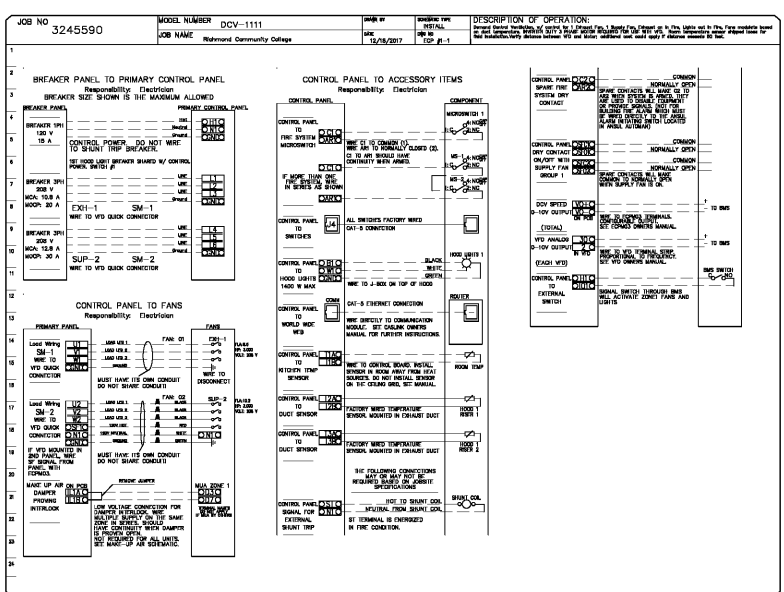
Hood Control Panel to allow cloud-based Building Management System to control parameters outlined as CONTROL in the points list.

Hood control panel to allow remote changes to system setting such as VFD Frequencies, ECM speeds, temperature set points, fan and wash schedules, etc.

MONITORING AND CONTROL POINTS LIST

DCV Package	Function	SD Package	Function
Room Temperature	MONITOR	Room Temperature	MONITOR
Duct Temperature	MONITOR	Duct Temperature	MONITOR
Wash Discharge Temperature	MONITOR	Wash Discharge Temperature	MONITOR
Wash WFO Discharge Temperature	MONITOR	Wash WFO Discharge Temperature	MONITOR
Fan Speed	MONITOR	Exhauster Fan	MONITOR
Fan Ampage	MONITOR	Fan Status	MONITOR
Fan Phase	MONITOR	Fan Status	MONITOR
VFD Faults	MONITOR	VFD Faults	MONITOR
Contactor Faults	MONITOR	VFD Fan Stop Percentage	MONITOR
Fan Faults	MONITOR	The Condition	MONITOR
Fan Status	MONITOR	CMR The System	MONITOR
Fan Phase	MONITOR	CMR The System	MONITOR
VFD Fan Stop Percentage	MONITOR	Fan Button	MONITOR & CONTROL
The Condition	MONITOR	Light Button	MONITOR & CONTROL
CMR The System	MONITOR	Wash Button	MONITOR & CONTROL
Building Presence	MONITOR		
Prep Time Button	MONITOR & CONTROL		
Fan Button	MONITOR & CONTROL		
Light Button	MONITOR & CONTROL		
Wash Button	MONITOR & CONTROL		

HOOD PREWIRE PACKAGE WIRING INFORMATION
STARTER CONTROL ONLY - STARTERS FOR FANS BY OTHERS



REVISIONS

NO.	DESCRIPTION	DATE

DATE: 12/18/2017
DWG.#: 3245590
DRAWN BY:
SCALE: 3/4" = 1'-0"
MASTER DRAWING

SHEET NO.
3

CAPTIVE
Piedmont Area Office
488 BUCKHURST DR., KERNERSVILLE, NC, 27284
PHONE: (336) 896-8484 FAX: (336) 896-8485
www.captive.com

adwarchitects
environmentsforlife
architecture planning interiors
2815 COLISEUM CENTRE DRIVE
SUITE 500
CHARLOTTE, NORTH CAROLINA 28217
P 704.379.1919
F 704.379.1920
www.adwarchitects.com

HEPEN DESIGN
FOOD SERVICE CONSULTANT
7025 EXETER DRIVE, S.E.
CHARLOTTE, NC 28226
704-477-1788 P
www.hepen.com
FOR REFERENCE ONLY



SCO #16-15889-02A
RICHMOND COMMUNITY COLLEGE
LINDSEY-PETRIS CAFETERIA / DINING ADDITION VOL.1

BID DOCUMENTS
FOOD SERVICE DETAILS & ELEVATIONS
DATE: 04.05.2019
PROJECT NO: 16063
REVISIONS
NO. DATE DESCRIPTION:

THIS DRAWING IS THE PROPERTY OF ADW ARCHITECTS, PA, AND SHALL NOT BE REPRODUCED OR COPIED IN WHOLE OR PART. IT SHALL NOT BE USED ON ANY OTHER PROJECT OR GIVEN TO ANY OTHER COMPANY OR AGENCY WITHOUT THE CONSENT OF ADW ARCHITECTS, PA.

K203