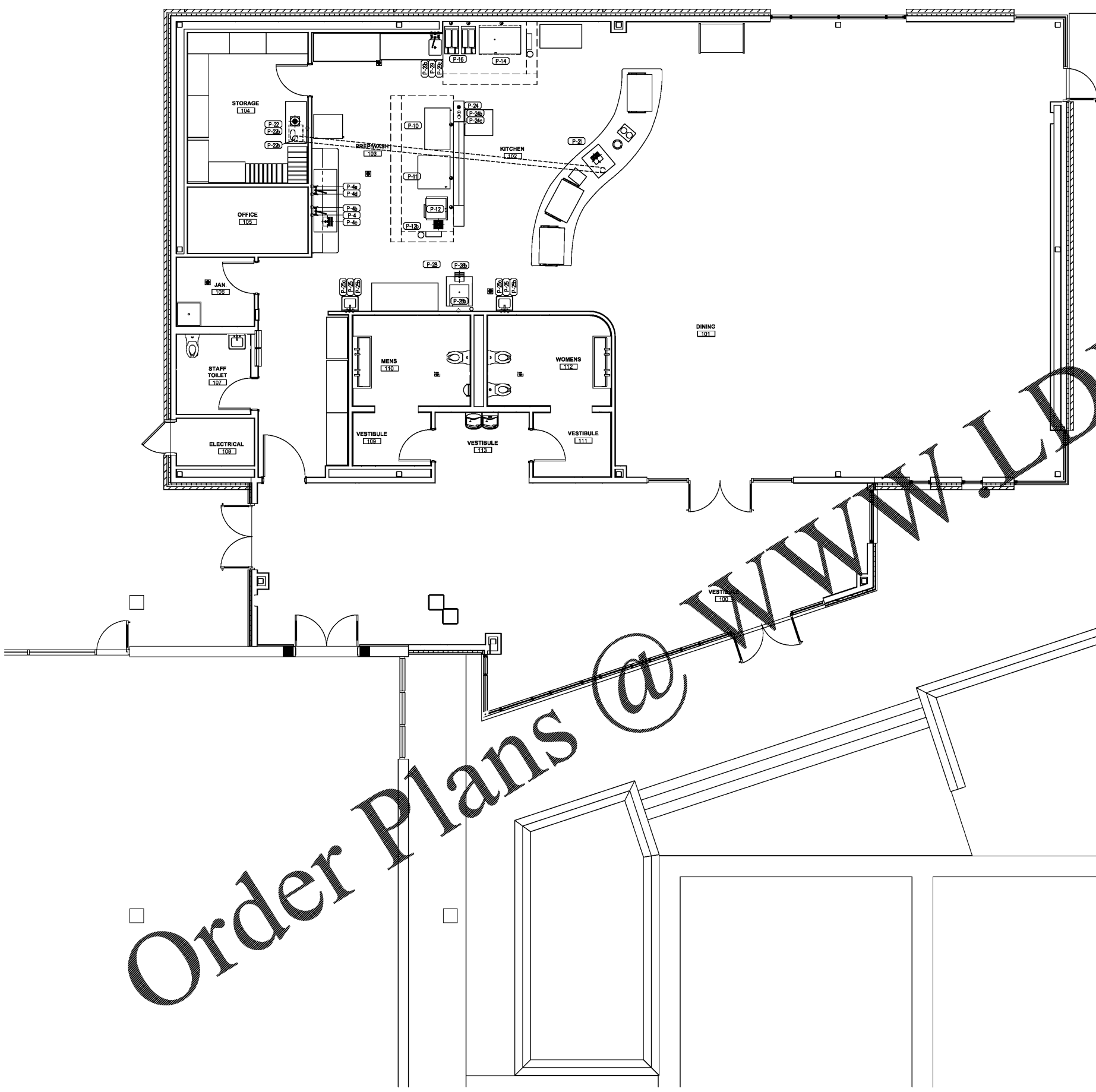




FOR REFERENCE ONLY



**PLUMBING CONNECTION SCHEDULE**

- P-4 1/2" HOT WATER, STUB OUT WALL AT 14"-AFF AND CONNECT TO ITEM 4, 3-COMPARTMENT SINK.
- P-4b 1/2" COLD WATER, STUB OUT WALL AT 14"-AFF AND CONNECT TO ITEM 4, 3-COMPARTMENT SINK.
- P-4c FLOOR SINK, HALF-GRATE, 2" INDIRECT WASTE FROM ITEM 29, 3-COMPARTMENT SINK.
- P-4d 1/2" HOT WATER, STUB OUT WALL AT 14"-AFF AND CONNECT TO ITEM 4, 3-COMPARTMENT SINK.
- P-4e 1/2" COLD WATER, STUB OUT WALL AT 14"-AFF AND CONNECT TO ITEM 4, 3-COMPARTMENT SINK.
- P-10 3/4" GAS, 286-MBTUH, QUICK DISCONNECT HOSE FROM ITEM 10, RANGE, TO ITEM 24, UDS, PROVIDED BY F.S.E.C.
- P-11 3/4" GAS, 54-MBTUH, QUICK DISCONNECT HOSE FROM ITEM 11, CONVECTION OVEN, TO ITEM 24, UDS, PROVIDED BY F.S.E.C.
- P-12 1/2" GAS, 60-MBTUH, QUICK DISCONNECT HOSE FROM ITEM 12, FUTURE CONVECTION STEAMER, TO ITEM 24, UDS, PROVIDED BY F.S.E.C.
- P-12b FLOOR SINK, FULL-GRATE, INDIRECT WASTE FROM ITEM 12, FUTURE CONVECTION STEAMER.
- P-14 3/4" GAS, 112-MBTUH, QUICK DISCONNECT HOSE FROM ITEM 14, GRIDDLE, TO ITEM 24, UDS, PROVIDED BY F.S.E.C.
- P-16 1/2" GAS, 120-MBTUH, QUICK DISCONNECT HOSE FROM ITEM 16, FRYER, TO GAS MANIFOLD. SEPARATE CONNECTION TO EACH FRYER.
- P-21 FLOOR SINK, HALF-GRATE, 3/4" INDIRECT WASTE FROM ITEM 21, ICE/BEVERAGE DISPENSER.
- P-22 FLOOR DRAIN 3/4" INDIRECT WASTE FROM ITEM 22, BEVERAGE POST MIX SYSTEM.
- P-22b 1/2" COLD WATER, STUB OUT WALL AT 14"-AFF AND CONNECT TO ITEM 22, BEVERAGE POST MIX SYSTEM.
- P-22a 8" ELECTRICAL CONDUIT UNDERGROUND WITH 24" RADIUS BENDS FROM ITEM 22, BEVERAGE POST MIX SYSTEM, TO ITEM 21, ICE/BEVERAGE DISPENSER.
- P-24 1-1/2" GAS, 975-MBTUH, 1-1/2" LOOPED GAS SERVICE FROM MANIFOLD TO ITEM 24, UTILITY DISTRIBUTION SYSTEM. MECHANICAL GAS VALVE PROVIDED BY F.S.E.C., INSTALLED BY PLUMBING CONTRACTOR.
- P-24b 3/4" HOT WATER, STUB FROM ABOVE AND CONNECT TO UTILITY DISTRIBUTION SYSTEM.
- P-24c 3/4" COLD WATER, STUB FROM ABOVE AND CONNECT TO ITEM 24, UTILITY DISTRIBUTION SYSTEM.
- P-25 2" DIRECT WASTE HUB FROM WALL AT 2". CONNECT TO 25, HAND SINK.
- P-25b 1/2" COLD WATER, STUB OUT WALL AT 14"-AFF AND CONNECT TO ITEM 25, HAND SINK.
- P-25c 1/2" HOT WATER, STUB OUT WALL AT 14"-AFF AND CONNECT TO ITEM 25, HAND SINK.
- P-28 3/8" COLD WATER, STUB OUT WALL AT 5"-8"-AFF AND CONNECT TO ITEM 25, ICE MAKER W/ICE BIN. PLUMB THROUGH ITEM 22a, WATER FILTER.
- P-28b FLOOR SINK, HALF-GRATE, 3/4" INDIRECT WASTE FROM ITEM 25, ICE MAKER W/ICE BIN.
- P-29 1/2" HOT WATER, STUB OUT WALL AT 14"-AFF AND CONNECT TO ITEM 29, PREP SINK.
- P-29b FLOOR SINK, HALF-GRATE, 2" INDIRECT WASTE FROM ITEM 29, PREP SINK.
- P-29c 1/2" COLD WATER, STUB OUT WALL AT 14"-AFF AND CONNECT TO ITEM 29, PREP SINK.

**LEGEND -- PLUMBING CONNECTIONS**

- HW-HOT WATER, OR CW-COLD WATER
- GAS
- WASTE, DIRECT-CONNECTED UNLESS NOTED "OPEN HUB"
- ⊕ FLOOR DRAIN
- FLOOR SINK WITH FULL GRATE
- FLOOR SINK WITH THREE-QUARTER GRATE
- FLOOR SINK WITH HALF GRATE
- FIELD CONNECTIONS

Order Plans @ WWW.LINDSEYPETRIS.COM

**RCC CAFE PLUMBING ROUGH-IN PLAN**  
SCALE: 1/4" = 1'-0"



SCO #16-15889-02A  
RICHMOND  
COMMUNITY  
COLLEGE

LINDSEY-PETRIS  
CAFETERIA / DINING  
ADDITION VOL. 1

BID DOCUMENTS

FOOD SERVICE  
PLUMBING  
ROUGH-IN PLAN

DATE: 04.05.2019  
PROJECT NO: 16063

REVISIONS  
NO: DATE: DESCRIPTION:

THIS DRAWING IS THE PROPERTY OF ADW ARCHITECTS, PA. AND SHALL NOT BE REPRODUCED OR COPIED IN WHOLE OR PART. IT SHALL NOT BE USED ON ANY OTHER PROJECT OR GIVEN TO ANY OTHER COMPANY OR AGENCY WITHOUT THE CONSENT OF ADW ARCHITECTS, PA.