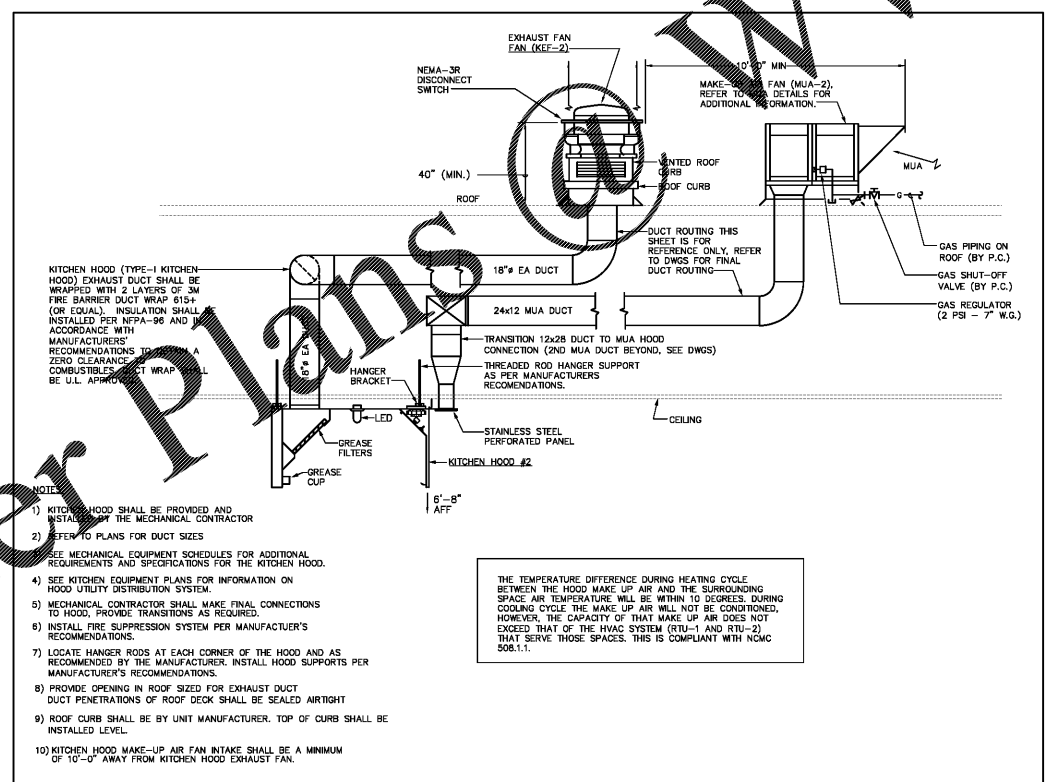
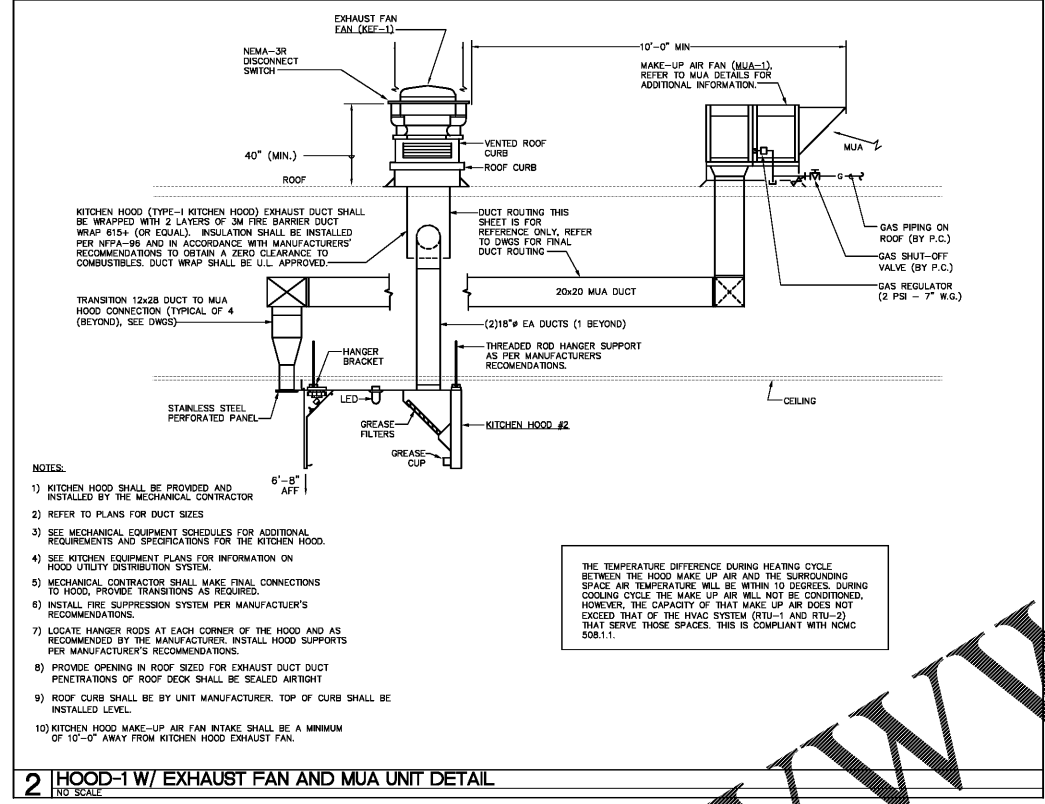


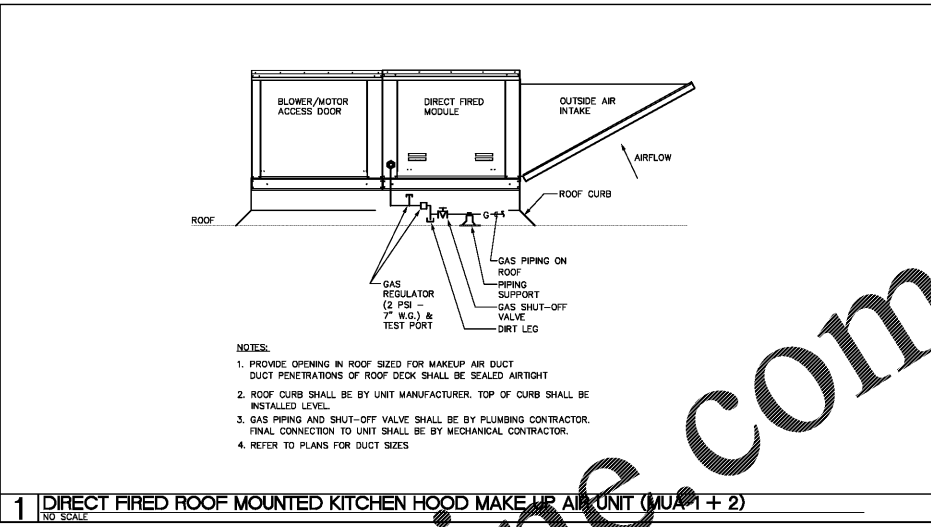
ROOF MOUNTED KITCHEN HOOD MAKE UP AIR UNIT SCHEDULE (GAS HEAT)

SYMBOL	O.A. CFM	E.S.E.	HEATING CAPACITY		L.A.T.	E.A.T.	IFM (EA)		POWER SUPPLY		OPERATING WEIGHT	MANUFACTURER CAPTIVE AIR		
			INPUT (BTUH)	OUTPUT (BTUH)			QTY	HP	FLA	MCA			FUSE	VOLTAGE
MUA-1	3,200	0.50"	196,000	180,000	72° F.	18.0° F.	1	2	3.8	4.8	15	480V-3Ø	829 LBS	A2-D.500-200
MUA-2	1,600	0.50"	101,000	93,000	72° F.	18.0° F.	1	2	2.7	2.5	15	480V-3Ø	627 LBS	A1-D.500-150

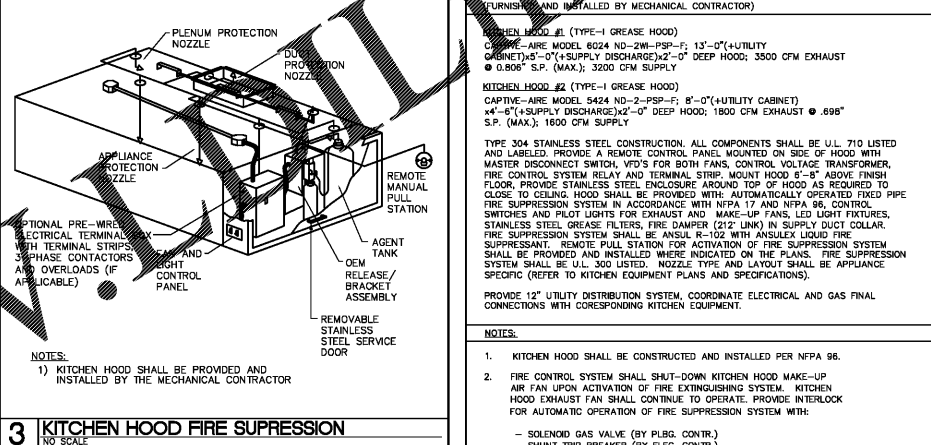
- NOTES:**
- PROVIDE UNIT WITH: MODULATING GAS HEAT, ROOF CURB, MOTORIZED BACK-DRAFT DAMPER, SUPPLY AIR PLenum, STAINLESS STEEL GAS BURNER, STAINLESS STEEL DRAIN PANS, ALUMINUM WASHABLE FILTERS, HINGED ACCESS DOORS WITH "TOOL-LESS" ENTRY, CONVENIENCE OUTLET, DISCONNECT AND SINGLE-POINT ELECTRICAL CONNECTION.
 - ALL UNITS SHALL BE AGA CERTIFIED AND U.L. LABELED.



4 HOOD-2 W/ EXHAUST FAN AND MUA UNIT DETAIL
NO SCALE



1 DIRECT FIRED ROOF MOUNTED KITCHEN HOOD MAKE UP AIR UNIT (MUA-1 + 2)
NO SCALE



3 KITCHEN HOOD FIRE SUPPRESSION
NO SCALE

KITCHEN AIR BALANCE

MARK	OUTSIDE AIR	MAKEUP AIR	EXHAUST AIR
FAN_KEE-1	-	-	3500
FAN_KEE-2	-	-	1800
MUA-1	-	3200	-
MUA-2	-	1600	-
RTU-1	500	-	-
	+500	+4800	-5300

RESULTING PRESSURIZATION = 0 CFM (NEUTRAL)

- NOTES:**
- KITCHEN HOOD SHALL BE PROVIDED AND INSTALLED BY THE MECHANICAL CONTRACTOR
 - KITCHEN HOOD SHALL BE CONSTRUCTED AND INSTALLED PER NFPA 96.
 - FIRE CONTROL SYSTEM SHALL SHUT-DOWN KITCHEN HOOD MAKE-UP AIR FAN UPON ACTIVATION OF FIRE EXTINGUISHING SYSTEM. KITCHEN HOOD EXHAUST FAN SHALL CONTINUE TO OPERATE. PROVIDE INTERLOCK FOR AUTOMATIC OPERATION OF FIRE SUPPRESSION SYSTEM WITH:
 - SOLENOID GAS VALVE (BY PLUMB. CONTR.)
 - SHUNT TRIP BREAKER (BY ELEC. CONTR.)
 - HOOD SUPPLY AND EXHAUST FANS
 - REMOTE MANUAL PULL STATION
 - ALL ASSOCIATED AIR HANDLING UNITS
 - FIRE ALARM SYSTEM NOTIFICATION (BY ELEC. CONTR.)
 - SEE THIS SHEET FOR HOOD DETAILS.
 - KITCHEN HOOD EXHAUST DUCT SHALL BE CONSTRUCTED OF 16 GAUGE CARBON STEEL. ALL JOINTS AND SEAMS SHALL BE SEALED WITH A LIQUID TIGHT CONTINUOUS EXTERNAL WELD. HORIZONTAL KITCHEN HOOD EXHAUST DUCT SHALL SLOPE 1/4" PER FOOT CONTINUOUSLY TOWARD HOOD.
 - KITCHEN HOOD (TYPE-I KITCHEN HOOD) EXHAUST DUCT SHALL BE WRAPPED WITH 2 LAYERS OF 3M FIRE BARRIER DUCT WRAP #15+ (OR EQUAL). INSULATION SHALL BE INSTALLED PER NFPA-96 AND IN ACCORDANCE WITH MANUFACTURERS' RECOMMENDATIONS TO OBTAIN A ZERO CLEARANCE TO COMBUSTIBLES. DUCT WRAP SHALL BE U.L. APPROVED.
 - ALL EXPOSED PIPING WITH FIRE SUPPRESSION SYSTEM SHALL TO COVERED WITH A CHROME SLEEVE.
 - MECHANICAL CONTRACTOR SHALL INSTALL 1/2" CONDUIT IN WALL FOR MANUAL PULL STATION. SEE PLANS FOR LOCATION OF MANUAL PULL STATION.
 - MECHANICAL CONTRACTOR SHALL BE RESPONSIBLE FOR HOOD CERTIFICATION IN COMPLIANCE WITH LOCAL CODE REQUIREMENTS. CERTIFICATION SHALL BE WITNESSED AND PERFORMED BY A PERSON CERTIFIED THROUGH AABC, TABS, NEBS OR NBC AND SHALL PROVIDE DOCUMENTATION OF PERFORMANCE TO THE CODE OFFICIAL. ALL EQUIPMENT SHALL BE ENERGIZED AND IN OPERATION DURING THE TEST. TEST SHALL ALSO INCLUDE VERIFYING ACTUAL FLOW RATES VERSUS DESIGN FLOW RATES.
 - D.C. SHALL PROVIDE CLASS-R FIRE EXTINGUISHER WITH KITCHEN HOOD IN ACCESSIBLE LOCATION (LOCATION TO BE APPROVED BY INSPECTOR PRIOR TO INSTALLATION).

ADDITIONAL FIRE SUPPRESSION NOTES (NCGC).

904.11.1 A MANUAL ACTUATION DEVICE SHALL BE LOCATED AT OR NEAR A MEANS OF EGRESS FROM THE COOKING AREA, A MINIMUM OF 10 FEET AND A MAXIMUM OF 20 FEET FROM THE KITCHEN EXHAUST SYSTEM. THE MANUAL ACTUATION DEVICE SHALL BE LOCATED A MINIMUM OF 3.5 FEET AND A MAXIMUM OF 4 FEET ABOVE THE FLOOR AND CLEARLY INDICATE THE HAZARD PROTECTED. THE MANUAL ACTUATION SHALL REQUIRE A MAXIMUM FORCE OF 40 POUNDS AND A MAXIMUM MOVEMENT OF 14 INCHES TO ACTUATE THE FIRE SUPPRESSION SYSTEM.

904.11.2 THE ACTUATION OF THE FIRE SUPPRESSION SYSTEM SHALL AUTOMATICALLY SHUT DOWN THE FUEL OF ELECTRICAL POWER SUPPLY TO THE COOKING EQUIPMENT. THE FUEL AND ELECTRICAL SUPPLY RESET SHALL BE MANUAL.

4 HOOD-2 W/ EXHAUST FAN AND MUA UNIT DETAIL
NO SCALE

adwarchitects
environmentsforlife
architecture planning interiors
8 coliseum centre,
2815 coliseum drive, suite 500
charlotte, north carolina 28217
t) 704 379 1919
f) 704 379 1920
www.adwarchitects.com

optima
engineering
1927 South Tryon St., Suite 300, Charlotte, NC 28203
150 Fayetteville St., Suite 150, Raleigh, NC 27601
Phone: 704-359-1292 • www.optimaengineering.com

RICHMOND
COMMUNITY COLLEGE
SCO #16-15889-02A

RICHMOND
COMMUNITY COLLEGE

LINDSEY-PETRIS
CAFETERIA / DINING
ADDITION VOL.1

BID DOCUMENTS

MECHANICAL KITCHEN
SCHEDULES AND DETAILS

DATE 4-5-2019
PROJECT NO 16063

REVISIONS

NO	DATE	DESCRIPTION:

THIS DRAWING IS THE PROPERTY OF ADW ARCHITECTS, P.A. AND SHALL NOT BE REPRODUCED OR COPIED IN WHOLE OR IN PART. IT SHALL NOT BE USED ON ANY OTHER PROJECT OR GIVEN TO ANY OTHER COMPANY OR AGENCY WITHOUT THE CONSENT OF ADW ARCHITECTS, P.A.

PROFESSIONAL ENGINEER
RICHMOND, NORTH CAROLINA
17228
FARNOLD Y. ALMOND

SHEET NUMBER **M003**
3 OF 6
OPTIMA # 17-0017

Order Plans