



1927 South Tryon St., Suite 303, Charlotte, NC 28203
150 Fayetteville St., Suite 520, Raleigh, NC 27601
Phone: 704-339-1292 • www.optimaengineering.com



SCO #16-15889-02A

**RICHMOND
COMMUNITY
COLLEGE**

LINDSEY-PETRIS
CAFETERIA / DINING
ADDITION VOL. 1

BID DOCUMENTS

**FLOOR PLAN -
GAS PIPING**

DATE 4-5-2019
PROJECT NO 16063

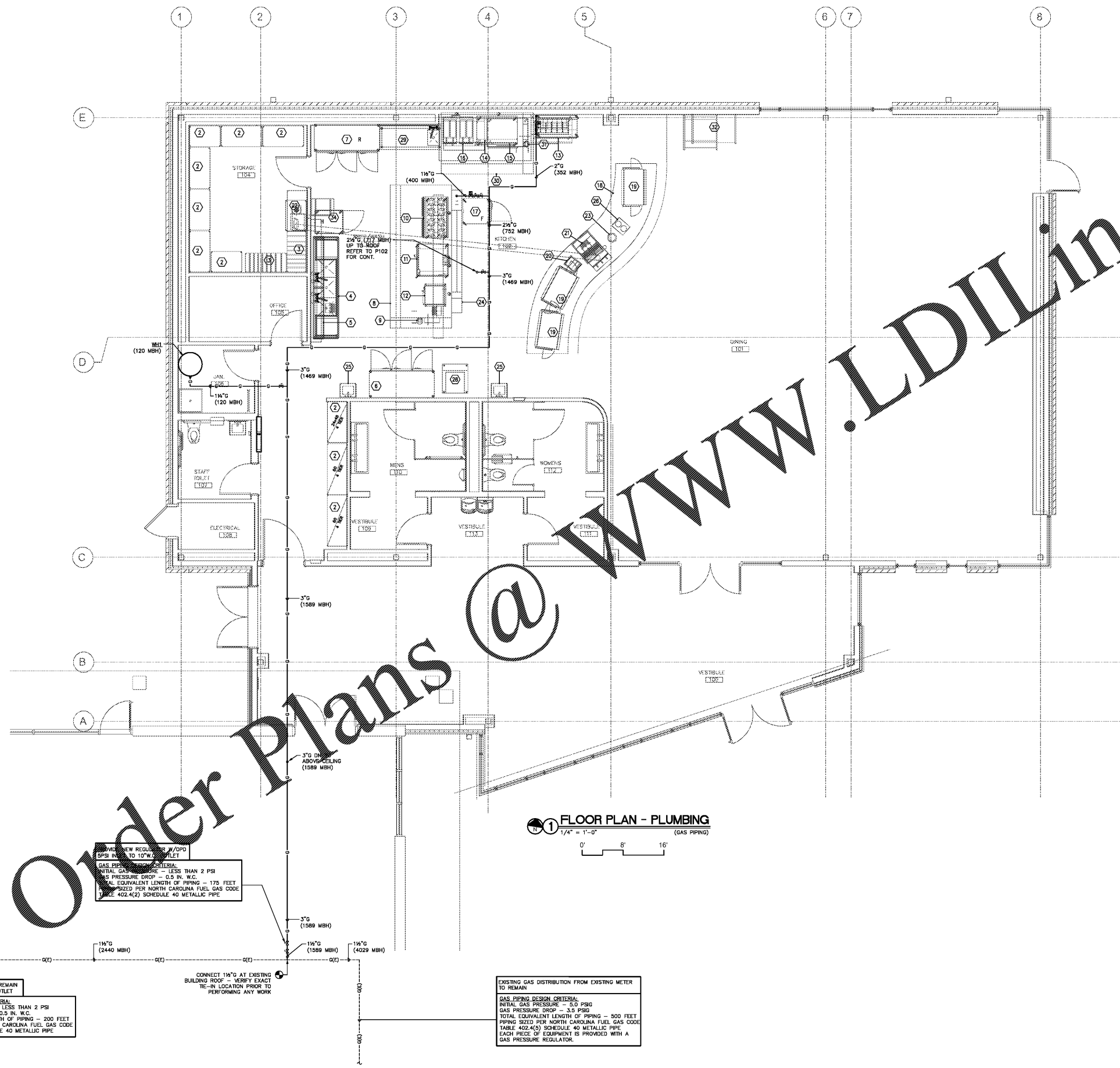
NO	DATE	DESCRIPTION

THIS DRAWING IS THE PROPERTY OF ADW ARCHITECTS, P.A. AND SHALL NOT BE REPRODUCED OR COPIED IN WHOLE OR IN PART. IT SHALL NOT BE USED ON ANY OTHER PROJECT OR GIVEN TO ANY OTHER COMPANY OR AGENCY WITHOUT THE CONSENT OF ADW ARCHITECTS, P.A.



SEAL 04/05/19

SHEET NUMBER **P301**
7 OF 7
OPTIMA # 17-0017



Order Plans @ www.LDILine.com

EXISTING REGULATOR TO REMAIN
SPSI INLET TO 14"W.C. OUTLET

GAS PIPING DESIGN CRITERIA
INITIAL GAS PRESSURE - LESS THAN 2 PSI
GAS PRESSURE DROP - 0.5 IN. W.C.
TOTAL EQUIVALENT LENGTH OF PIPING - 200 FEET
PIPING SIZED PER NORTH CAROLINA FUEL GAS CODE
TABLE 402.4(2) SCHEDULE 40 METALLIC PIPE.

CONNECT 1 1/4" G AT EXISTING BUILDING ROOF - VERIFY EXACT TIE-IN LOCATION PRIOR TO PERFORMING ANY WORK.

EXISTING GAS DISTRIBUTION FROM EXISTING METER TO REMAIN

GAS PIPING DESIGN CRITERIA
INITIAL GAS PRESSURE - 5.0 PSIG
GAS PRESSURE DROP - 3.5 PSIG
TOTAL EQUIVALENT LENGTH OF PIPING - 500 FEET
PIPING SIZED PER NORTH CAROLINA FUEL GAS CODE
TABLE 402.4(5) SCHEDULE 40 METALLIC PIPE
EACH PIECE OF EQUIPMENT IS PROVIDED WITH A GAS PRESSURE REGULATOR.