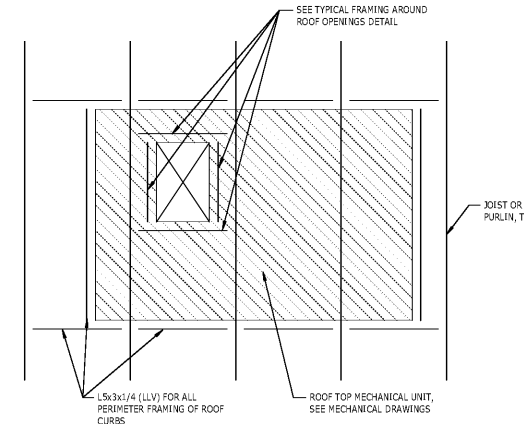


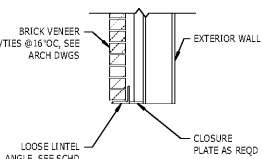
**10 DETAIL**  
 S-502 NEW OPENING IN EXISTING NON-LOAD BEARING CMU WALL  
 NTS  
 NOTES:  
 1. CONTRACTOR SHALL SHORE EXISTING WALL UNTIL ANGLES ARE INSTALLED AND GROUT HAS SET FOR AT LEAST 3 DAYS.



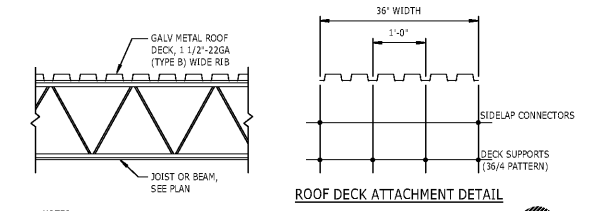
**7 DETAIL**  
 S-502 TYPICAL ROOF TOP MECHANICAL UNIT FRAMING  
 NTS  
 NOTES:  
 1. ALL MEMBERS NOT SIZED ON FRAMING PLAN SHALL BE L5x3x1/4.

**STEEL LOOSE LINTEL ANGLE SUPPORTING BRICK VENEER**

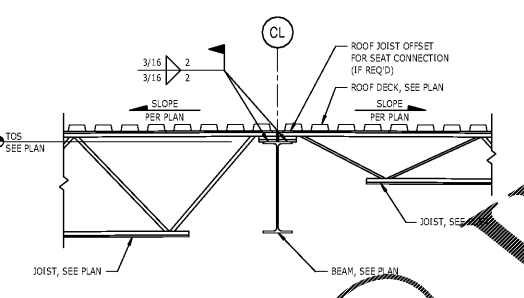
CLEAR OPENING	LOOSE LINTEL ANGLE
UP TO 5'-0"	L4x4x3/8
5'-1" TO 8'-0"	L6x4x3/8 (LLV)
8'-1" TO 10'-0"	L7x4x3/8 (LLV)
10'-1" TO 12'-0"	L8x4x1/2 (LLV)



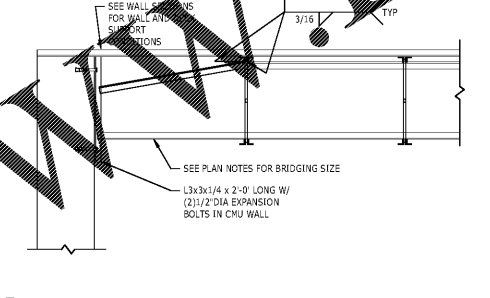
**4 DETAIL**  
 S-502 STEEL LOOSE LINTEL ANGLES SUPPORTING BRICK VENEER  
 NTS  
 NOTES:  
 1. ALL LOOSE LINTELS SHALL BE PAINTED OR GALVANIZED, SEE ARCHITECTURAL DRAWINGS.  
 2. PROVIDE 6" MINIMUM BEARING FOR OPENINGS UP TO 8'-0" WIDE. PROVIDE 8" MINIMUM BEARING FOR OPENINGS OVER 8'-0" WIDE.  
 3. SEE ARCHITECTURAL DRAWINGS FOR ANGLE PLACEMENT AND FLASHING.  
 4. LOOSE LINTEL ANGLES ARE NOT SHOWN ON THE STRUCTURAL DRAWINGS. SEE ARCHITECTURAL DRAWINGS FOR ALL LOCATIONS OF OPENINGS REQUIRING ANGLES.  
 5. FOR CLEAR OPENING DIMENSIONS GREATER THAN THOSE SHOWN IN THE SCHEDULE, SEE OTHER DETAILS OR CONTACT THE ENGINEER OF RECORD.



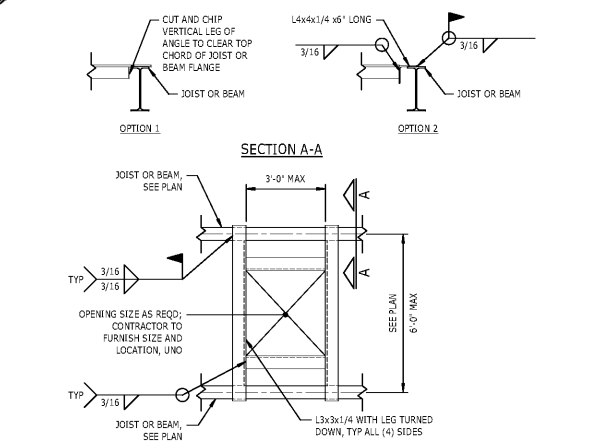
**1 DETAIL**  
 S-502 TYPICAL CONSTRUCTION, 1 1/2" METAL ROOF DECK  
 NTS  
 NOTES:  
 1. ATTACH DECK TO SUPPORTING MEMBERS WITH SELF-DRILLING SELF-TAPPING HEX WASHER HEAD SCREWS, USE #11 FOR DECK ATTACHMENT TO SUPPORTS AND #10-16 FOR SIDELAP ATTACHMENT.  
 2. AT DECK BEARING SUPPORTS, PROVIDE SCREWS @12" OC (36/4 PATTERN).  
 3. AT SUPPORTS PARALLEL TO DECK SPAN, PROVIDE SCREWS @12" OC, TYPICAL.  
 4. AT DECK SIDELAPS/PERIMETER EDGE, PROVIDE SCREWS @12" OC, TYPICAL. WELDING OF SIDELAPS IS NOT PERMITTED FOR 22GA DECK.  
 5. MINIMUM DECK PROPERTIES: 1 1/2"-22 GAGE; I<sub>p</sub>=0.155 in<sup>4</sup>/ft; S<sub>x</sub>=0.186 in<sup>3</sup>/ft; E<sub>x</sub>=1.7 in<sup>2</sup>/ft; S<sub>y</sub>=0.192 in<sup>3</sup>/ft; F<sub>y</sub>=33 ksi.  
 6. DECK SHALL BE CONTINUOUS OVER (2) OR MORE SPANS, TYPICAL.  
 7. 5/8" DIA RIBBLE WELDS MAY BE USED FOR DECK ATTACHMENT TO SUPPORTS AT SPACING SPECIFIED ABOVE. SIDELAP FASTENING MUST BE SCREWED AS DESCRIBED ABOVE.  
 8. CONTRACTOR OPTION TO SUBMIT MECHANICAL FASTENERS (SHILTI, SIMPSON STRONG-TITE, OR APPROVED EQUAL. SUBSTITUTION REQUESTS FOR PRODUCTS MAY BE SUBMITTED BY THE CONTRACTOR TO THE ENGINEER-OF-RECORD (EOR) FOR REVIEW. SUBSTITUTIONS WILL ONLY BE CONSIDERED FOR PRODUCTS THAT MEET THE CODE REQUIREMENTS FOR DECK ATTACHMENT, POSSESS A FM GLOBAL APPROVAL AND POSSESS THE ECR REPORT (ICC-ES) RECOGNIZING THE PRODUCT FOR THE APPROPRIATE APPLICATION. SUBSTITUTION REQUESTS SHALL INCLUDE CALCULATIONS THAT DEMONSTRATE THE SUBSTITUTED PRODUCT IS CAPABLE OF CARRYING THE EQUIVALENT PERFORMANCE VALUES OF THE DESIGN BASIS PRODUCT. CONTRACTOR SHALL CONTACT MANUFACTURER'S REPRESENTATIVE FOR PRODUCT INSTALLATION TRAINING AND A LETTER SHALL BE SUBMITTED TO EOR INDICATING TRAINING HAS TAKEN PLACE. FASTENERS SHALL BE COLLATED AND INSTALLED USING MANUFACTURER'S DELIVERY TOOL AND FOLLOWING MANUFACTURER'S INSTRUCTIONS.



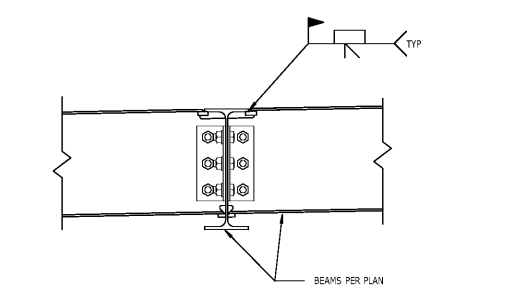
**8 SECTION**  
 S-502 TYPICAL JOIST BEARING AT RIDGE  
 NTS



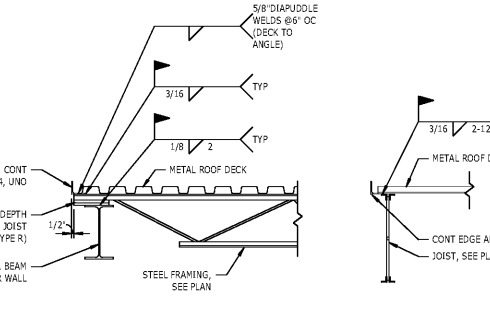
**5 SECTION**  
 S-502 TYPICAL BRIDGING DETAIL  
 NTS



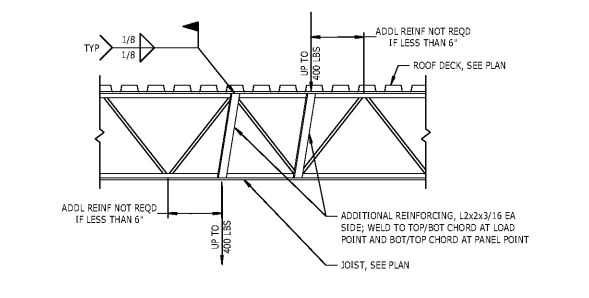
**2 DETAIL**  
 S-502 TYPICAL FRAMING AROUND ROOF OPENINGS, 1 1/2" METAL ROOF DECK  
 NTS  
 NOTES:  
 1. PROVIDE ANGLE FRAMING AROUND ALL OPENINGS LARGER THAN 10'x10' (10'D).



**9 SECTION**  
 S-502 1 1/2" = 1'-0"



**6 SECTION**  
 S-502 TYPICAL EDGE DETAIL AT ROOF  
 NTS  
 NOTES:  
 1. SEE OTHER DETAILS FOR INFORMATION NOT SHOWN.



**3 SECTION**  
 S-502 TYPICAL REINFORCING FOR CONCENTRATED LOADS ON STEEL JOISTS  
 NTS  
 NOTES:  
 1. WHERE POSSIBLE, ALL LOADS ARE TO BE SUPPORTED FROM PANEL POINTS. WHERE NOT POSSIBLE, PROVIDE REINFORCEMENT AS DETAILLED.  
 2. LOADS LESS THAN 100 LBS REQUIRE NO ADDITIONAL REINFORCING. LOADS LARGER THAN 400 LBS PER JOIST REQUIRE SPECIAL SUPPORT CONDITIONS TO BE APPROVED BY THE ENGINEER OF RECORD.  
 3. BOTTOM CHORDS EXTENDING UNSUPPORTED PAST THE FIRST BOTTOM PANEL POINT TOWARD JOIST BEARING LOCATION ARE NOT TO BE USED TO SUPPORT ANY LOAD WITHOUT WRITTEN PERMISSION FROM THE ENGINEER OF RECORD.

Order Plans @

WWW.LDILLING.COM



SCO #16-15889-02A  
 RICHMOND COMMUNITY COLLEGE

LINDSEY-PETRIS CAFETERIA / DINING ADDITION VOL.1

BID DOCUMENTS

STEEL TYPICAL DETAILS

DATE: 4-5-2019  
 PROJECT NO: 16063

REVISIONS  
 NO. DATE DESCRIPTION:

THIS DRAWING IS THE PROPERTY OF ADW ARCHITECTS, P.A. AND SHALL NOT BE REPRODUCED OR COPIED IN WHOLE OR PART. IT SHALL NOT BE USED ON ANY OTHER PROJECT OR GIVEN TO ANY OTHER COMPANY OR AGENCY WITHOUT THE CONSENT OF ADW ARCHITECTS, P.A.



SHEET NUMBER

**S-502**