



STEWART
101 N TRYON ST SUITE 1400 CHARLOTTE, NC 28202
704.334.7925 FIRM LICENSE #C 1051 S18017



SCO #16-15889-02A
**RICHMOND
COMMUNITY
COLLEGE**

LINDSEY-PETRIS
CAFETERIA / DINING
ADDITION VOL.1

BID DOCUMENTS

ROOF FRAMING PLAN

DATE: 4-5-2019
PROJECT NO: 16063

REVISIONS
NO. DATE DESCRIPTION:

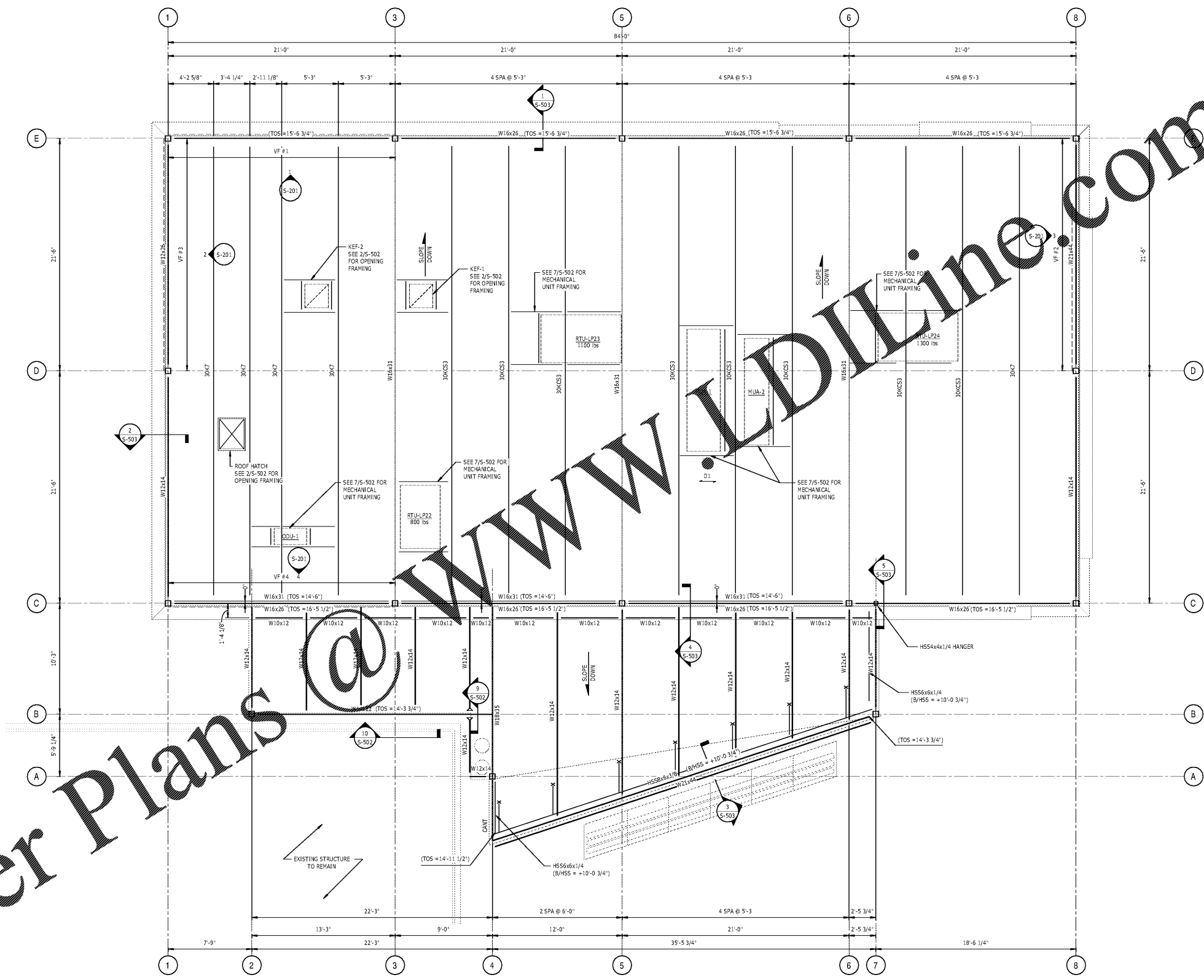
THIS DRAWING IS THE PROPERTY OF ADW ARCHITECTS, P.A. AND SHALL NOT BE REPRODUCED OR COPIED IN WHOLE OR PART. IT SHALL NOT BE USED ON ANY OTHER PROJECT OR GIVEN TO ANY OTHER COMPANY OR AGENCY WITHOUT THE CONSENT OF ADW ARCHITECTS, P.A.



SHEET NUMBER

S-121

Order Plans @ WWW.LDILine.com



- 1 ROOF FRAMING PLAN**
1/4" = 1'-0"
- NOTES:
1. FOR GENERAL NOTES AND ABBREVIATIONS, SEE 5001.
2. (N) INDICATES TOP OF STEEL JOIST BEARING ELEVATION. (+N) INDICATES TOP OF STEEL ABOVE JOIST BEARING ELEVATION.
3. (D) INDICATES STEEL DECK SPAN DIRECTION. CONSTRUCTION SHALL BE 1 1/2" x 26GA METAL DECK. SEE 1/5-501 FOR TYPICAL ROOF CONSTRUCTION DETAIL.
4. "VF" INDICATES VERTICAL FRAME TYPE. SEE S-201 FOR ELEVATIONS AND DETAILS.
5. FOR TYPICAL ROOF FRAMING DETAILS, SEE S-502 AND S-503.
6. FOR STEEL COLUMN SCHEDULE, SEE S-501.