



SCO #16-15889-02A

RICHMOND
COMMUNITY
COLLEGE

LINDSEY-PETRIS
CAFETERIA/DINING
ADDITION VOL.1

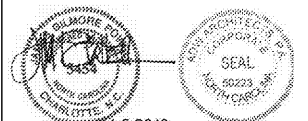
BID DOCUMENTS

STOREFRONT
ELEVATIONS

DATE: 04.05.2019
PROJECT NO: 16063

REVISIONS
NO. DATE DESCRIPTION

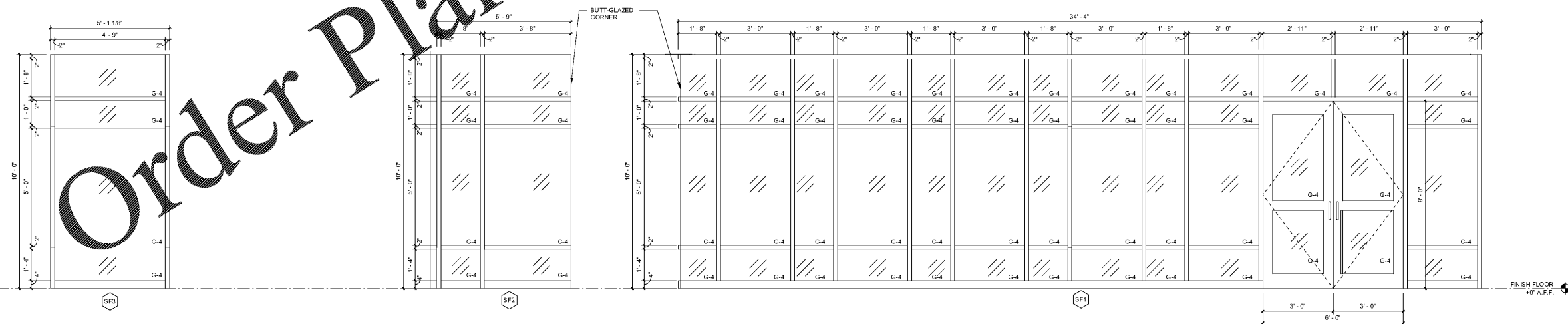
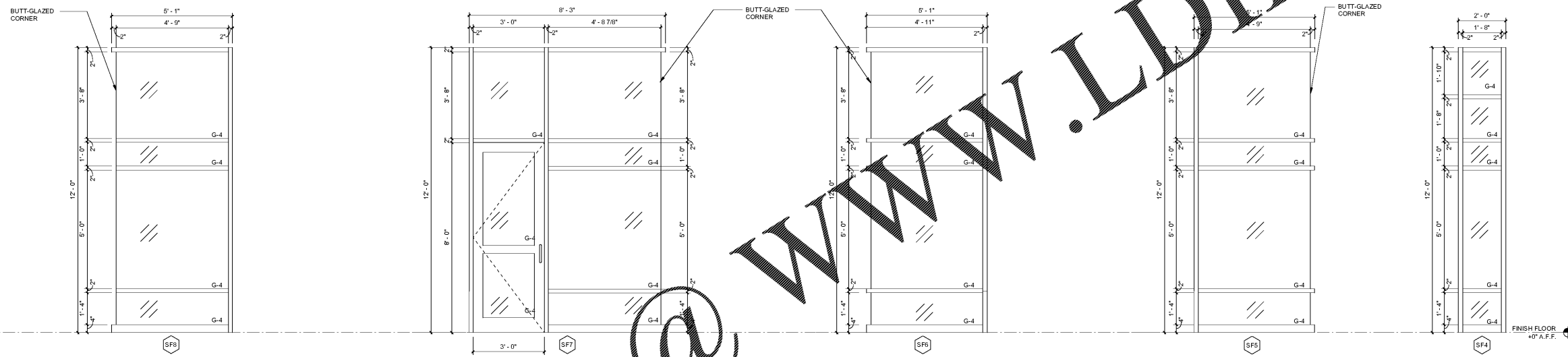
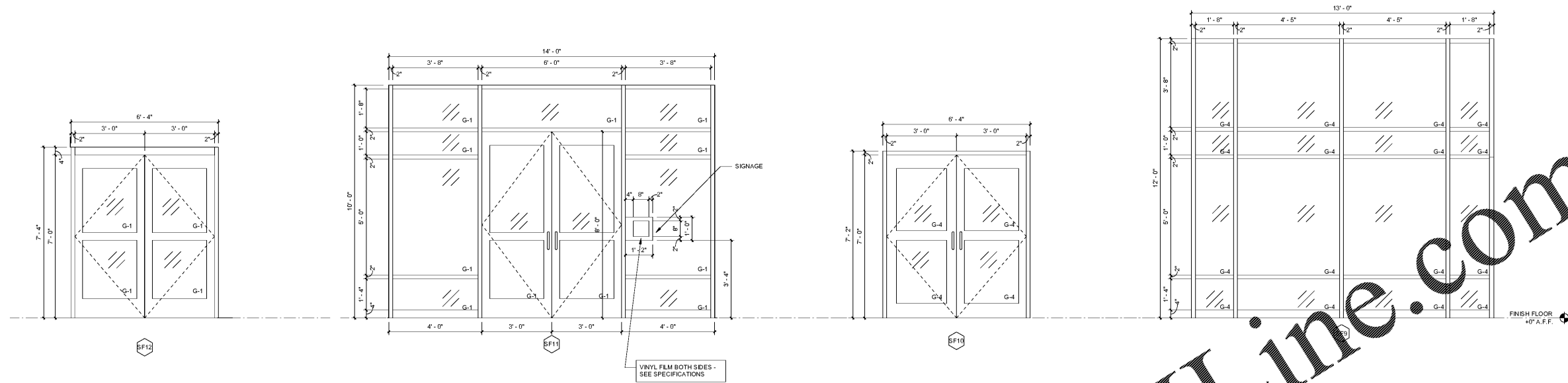
THIS DRAWING IS THE PROPERTY OF ADW ARCHITECTS, P.A. AND SHALL NOT BE REPRODUCED OR COPIED IN WHOLE OR PART. IT SHALL NOT BE USED ON ANY OTHER PROJECT OR GIVEN TO ANY OTHER COMPANY OR AGENCY WITHOUT THE CONSENT OF ADW ARCHITECTS, P.A.



4-5-2019

SHEET NUMBER

A601



GLAZING LEGEND	
	UNCOATED CLEAR FULLY TEMPERED FLOAT GLASS 1/4" THICK
	LOW-E TINTED TEMPERED INSULATED GLASS 1" THICK

GLAZING NOTE:
FIELD VERIFY ALL OPENINGS PRIOR TO ANY FABRICATION AND NOTIFY THE ARCHITECT OF ANY DISCREPANCIES

Order Plans @

WWW.LDILine.com