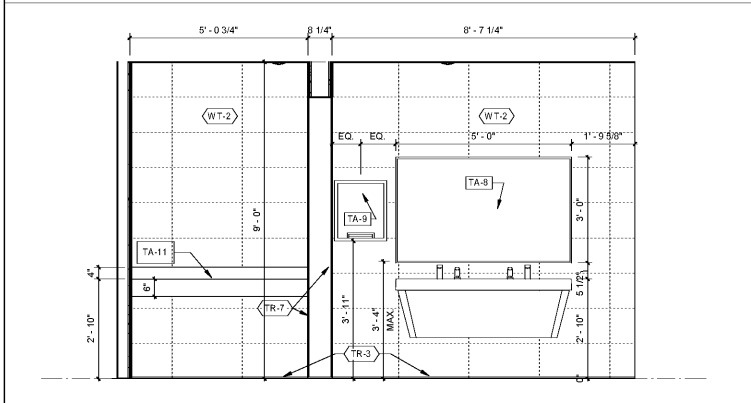
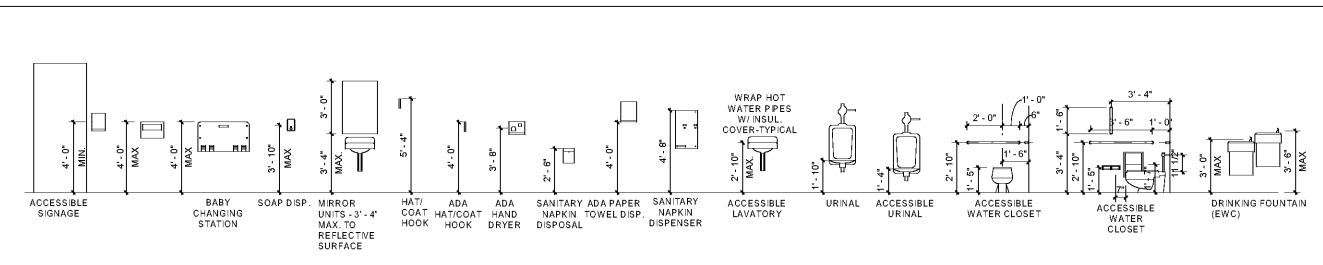
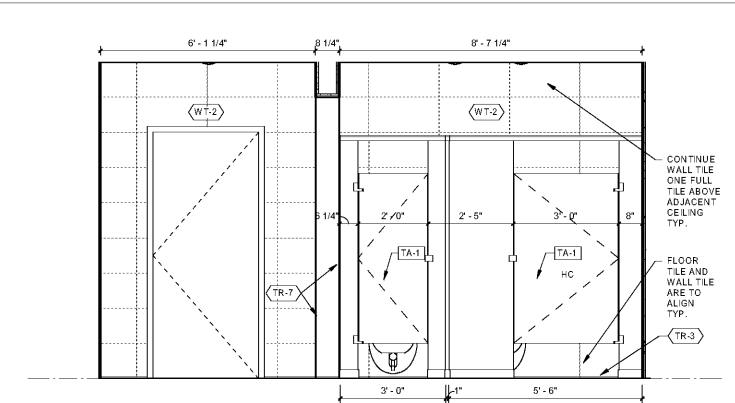


TOILET ACCESSORIES					
SYMBOL	ACCESSORY	MOUNTING HT. (ADULT)	MANUFACTURER	MODEL	COMMENTS
TA-1	PARTITION	SEE SPECS	General Partitions Mfg. Corp.		
TA-2	COAT HOOK	48" A.F.F. (T.O. Hook)	Bobrick Washroom Equipment, Inc.	B-6727	
TA-3	18" GRAB BAR	48" A.F.F. TO CL	Bobrick Washroom Equipment, Inc.	BOBRICK B-6806.99x18	
TA-4	36" GRAB BAR	34" A.F.F. to Centerline	Bobrick Washroom Equipment, Inc.	BOBRICK B-6806.99x36	
TA-5	42" GRAB BAR	34" A.F.F. to Centerline	Bobrick Washroom Equipment, Inc.	BOBRICK B-6806.99x42	
TA-6	TOILET TISSUE DISPENSER	18" A.F.F.			OWNER SUPPLIED/OWNER INSTALLED
TA-7	SANITARY NAPKIN DISPOSAL	18" A.F.F.	Bobrick Washroom Equipment, Inc.	B-270	
TA-8	MIRROR	40" A.F.F. (B.O. Mirror)	Bobrick Washroom Equipment, Inc.	B-165 Series	SEE DRAWINGS FOR DIMENSIONS
TA-9	PAPER TOWEL DISPENSER	40" A.F.F.			OWNER SUPPLIED/OWNER INSTALLED
TA-10	SOAP DISPENSER	40" A.F.F.	Bobrick Washroom Equipment, Inc.		
TA-11	CHANGING STATION COUNTER	34" A.F.F.			

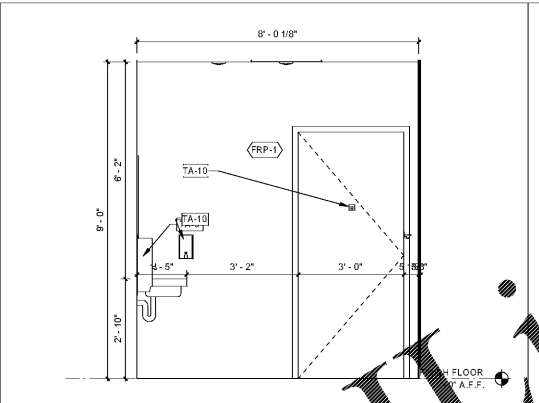
- GENERAL NOTES - TOILETS**
- PROVIDE CONCEALED BLOCKING FOR ALL WALL ITEMS.
 - APPROVED EQUALS FOR TOILET ACCESSORIES ARE BRADLEY AND AMERICAN STANDARD.
 - THE HEIGHT OF ALL ACCESSIBLE ADULT WATER CLOSETS SHALL BE 17" A.F.F. TO THE TOP OF THE TOILET SEAT.
 - THE HEIGHT OF ALL ACCESSIBLE URINALS SHALL BE 17" A.F.F. TO THE RIM.
 - PROVIDE 6" DIA. HOLES IN COUNTERTOP FOR TRASH BULL NOSE EDGE.
 - PROVIDE 48" WIDE x 8" SANITARY WALL FINISH ON BOTH SIDES OF MOP SINK.
 - INSTALL PER MANUFACTURER'S RECOMMENDATIONS.
 - TP - TRANSITION POINT BETWEEN FINISHES, OR CHANGES IN HEIGHTS.
 - G.C. TO COORDINATE INSTALLATION OF LIGHTS AND MIRRORS (TO BE CENTERED WITH SINKS).



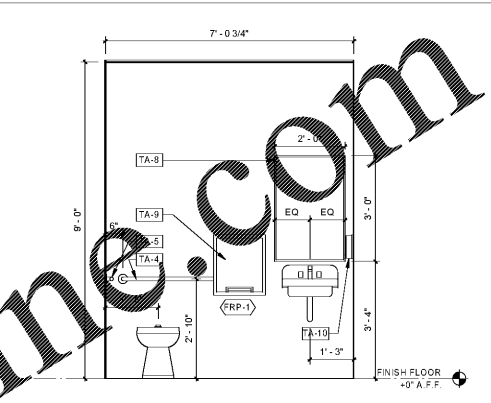
TOILET ELEVATION | 1/2" = 1'-0" | 13



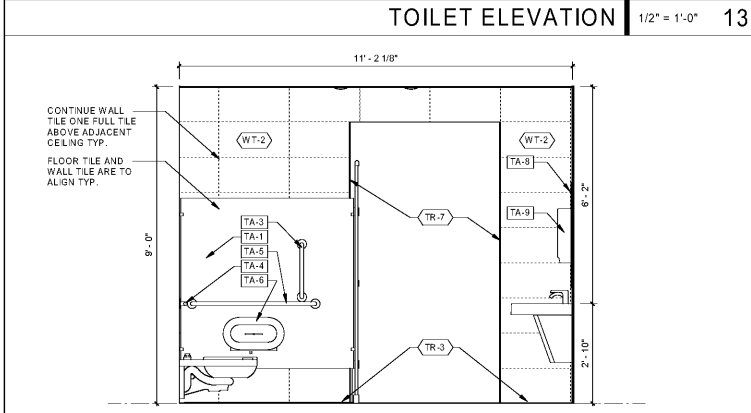
TOILET ELEVATION | 1/2" = 1'-0" | 09



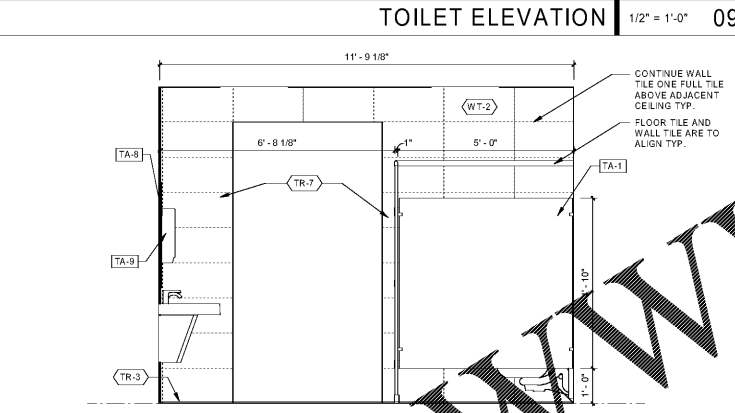
ELEVATION | 1/2" = 1'-0" | 05



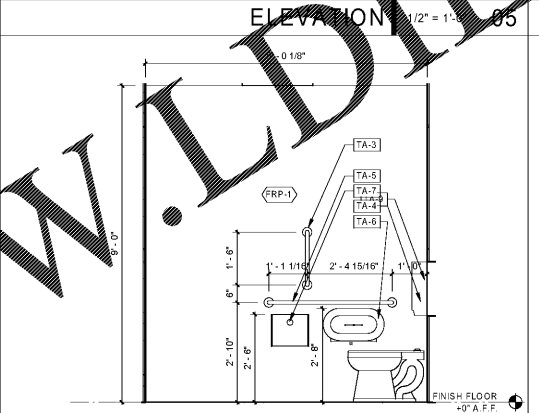
ELEVATION | 1/2" = 1'-0" | 03



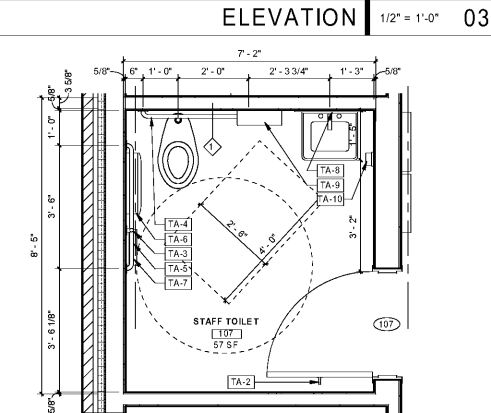
TOILET ELEVATION | 1/2" = 1'-0" | 12



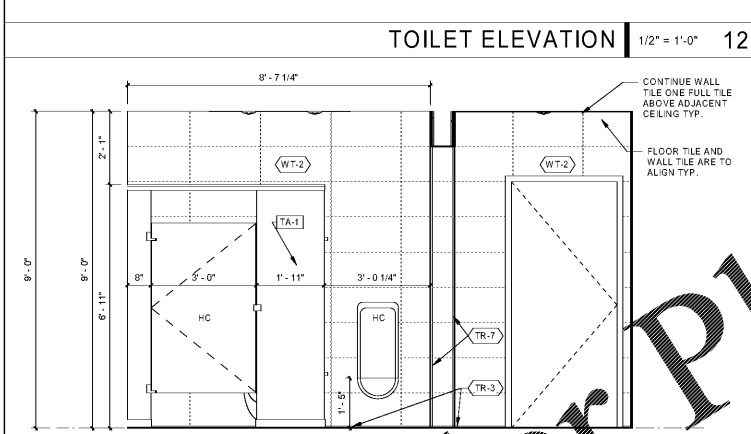
TOILET ELEVATION | 1/2" = 1'-0" | 08



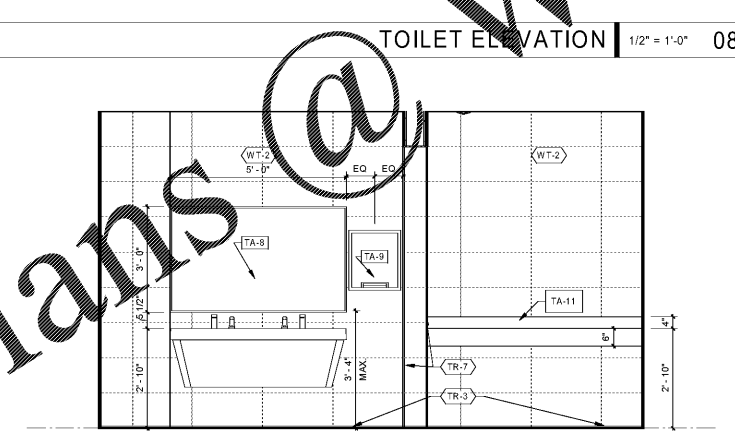
ELEVATION | 1/2" = 1'-0" | 04



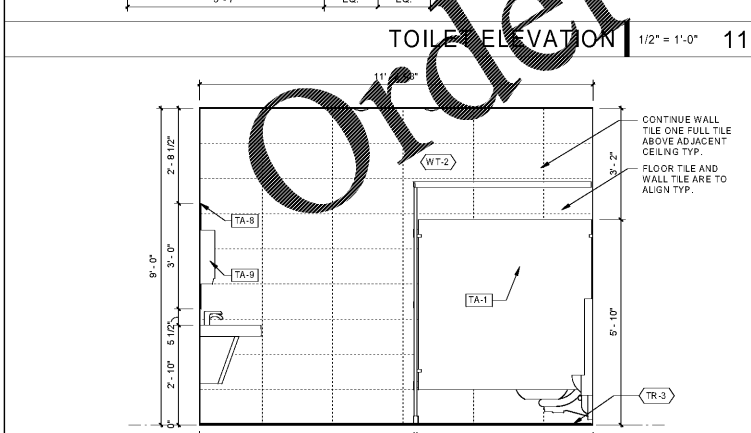
ENLARGED TOILET PLAN | 1/2" = 1'-0" | 02



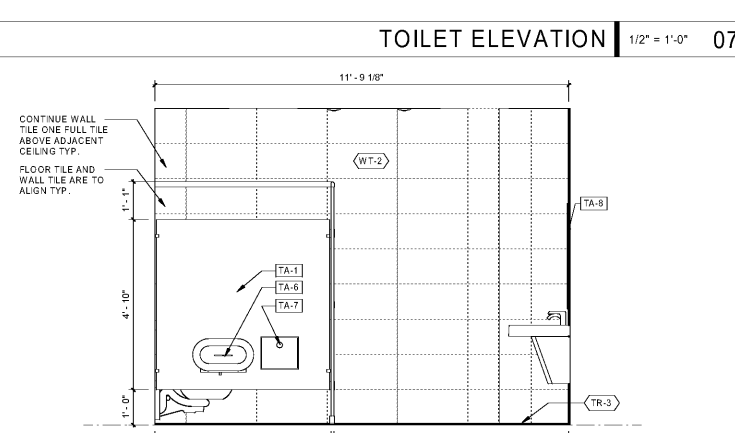
TOILET ELEVATION | 1/2" = 1'-0" | 11



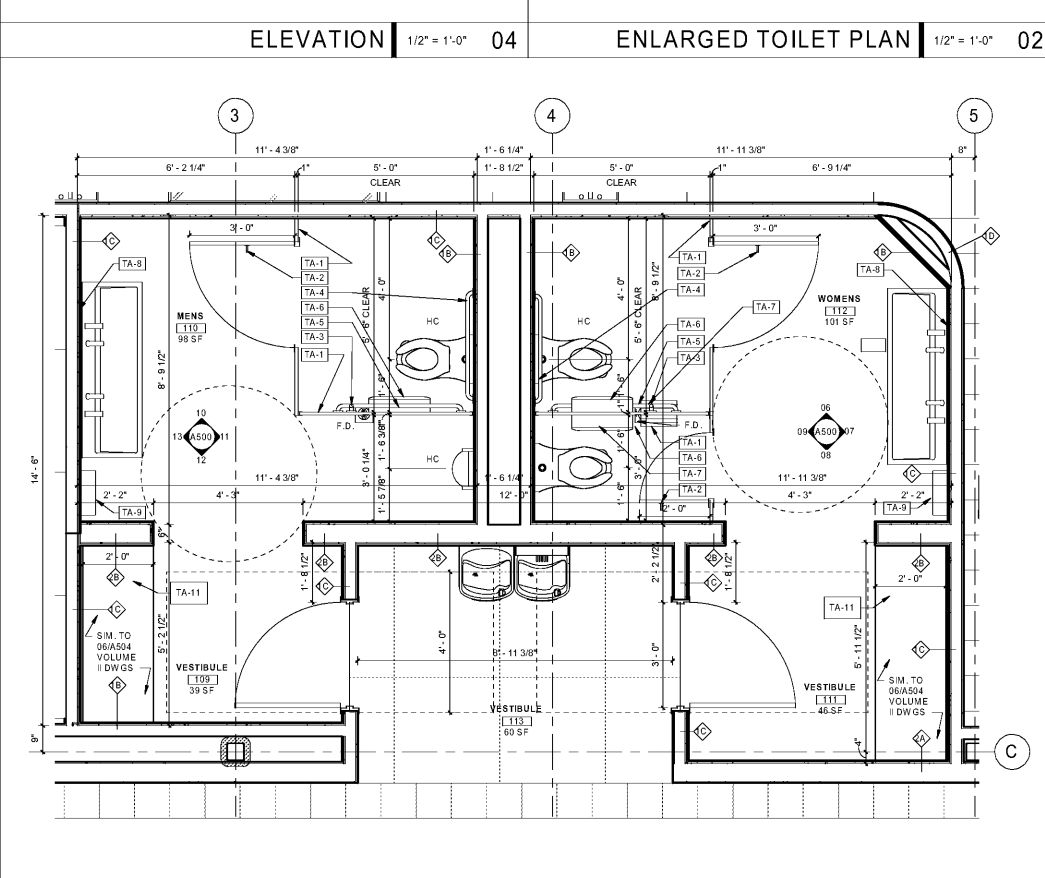
TOILET ELEVATION | 1/2" = 1'-0" | 07



TOILET ELEVATION | 1/2" = 1'-0" | 10



TOILET ELEVATION | 1/2" = 1'-0" | 06



ENLARGED TOILET PLAN | 1/2" = 1'-0" | 01

adwarchitects
environments for life
architecture planning interiors
2815 COLISEUM CENTRE DRIVE
SUITE 500
CHARLOTTE, NORTH CAROLINA 28217
P 704.379.1919
F 704.379.1920
www.adwarchitects.com

RICHMOND
COMMUNITY COLLEGE
SCO #16-15889-02A

RICHMOND
COMMUNITY COLLEGE

LINDSEY-PETRIS
CAFETERIA/DINING
ADDITION VOL. 1

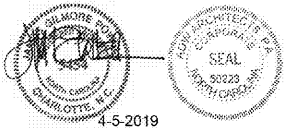
BID DOCUMENTS

TOILET ELEVATIONS AND
DETAILS

DATE: 04.05.2019
PROJECT NO: 16063

REVISIONS
NO. DATE: DESCRIPTION:

THIS DRAWING IS THE PROPERTY OF ADW ARCHITECTS, P.A. AND SHALL NOT BE REPRODUCED OR COPIED IN WHOLE OR PART. IT SHALL NOT BE USED ON ANY OTHER PROJECT OR GIVEN TO ANY OTHER COMPANY OR AGENCY WITHOUT THE CONSENT OF ADW ARCHITECTS, P.A.



4-5-2019
SHEET NUMBER

A500