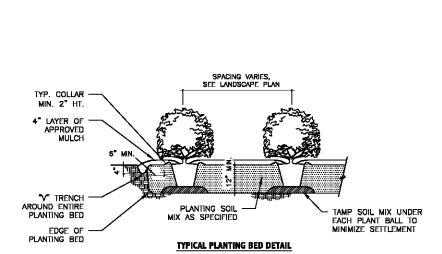


ALL TREES SHALL MEET AMERICAN STANDARD FOR NURSERY STOCK (ANSI Z60.1-2004) FOR EXAMPLE: CALIPER (HEIGHT (DUNGE)) MAX. HT. MIN. ROOT BALL DIA. MIN. ROOT BALL DEPTH.

- NOTES
1. ALL TREES ARE TO BE NURSERY GROWN, BALL AND BURLAP (BAB) PREFERRED.
  2. REMOVE ALL TIES OR PLASTIC COATED BURLAP, STRAPPING WIRE OR NYLON TIE FROM ROOT BALL AND CANOPY. AFTER SETTING IN HOLE, CUT AWAY TOP 2/3 OF WIRE BASKET, IF PRESENT, AND TOP 1/3 OF BURLAP.
  3. SOAK PLANT BALL AND FIT IMMEDIATELY AFTER INSTALLATION.
  4. INSTALL TOP OF PLANT BALL 2\"/>



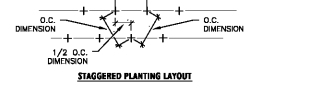
TYP. STAGGERED ROWS



- NOTES
1. SCARIFY ROOT MASS OF CONTAINERIZED PLANT MATERIAL.
  2. INSTALL CONTAINERIZED PLANTS AT FINISHED GRADE.
  3. TAMP PLANTING MIX FIRMLY AS PIT IS FILLED AROUND EACH PLANT.
  4. OMIT COLLAR AROUND EACH SHRUB WHEN IRRIGATION SYSTEM IS PRESENT.
  5. SOAK EACH PLANT BALL AND FIT IMMEDIATELY AFTER INSTALLATION.
  6. SET SPECIFICATIONS FOR FURTHER SOIL AND PLANTING REQUIREMENTS.



TYP. STAGGERED ROWS



- NOTES
1. SCARIFY ROOT MASS OF CONTAINERIZED PLANT MATERIAL.
  2. INSTALL CONTAINERIZED PLANTS AT FINISHED GRADE.
  3. TAMP PLANTING MIX FIRMLY AS PIT IS FILLED AROUND EACH PLANT.
  4. OMIT COLLAR AROUND EACH SHRUB WHEN IRRIGATION SYSTEM IS PRESENT.
  5. SOAK EACH PLANT BALL AND FIT IMMEDIATELY AFTER INSTALLATION.
  6. SET SPECIFICATIONS FOR FURTHER SOIL AND PLANTING REQUIREMENTS.



TYP. STAGGERED ROWS



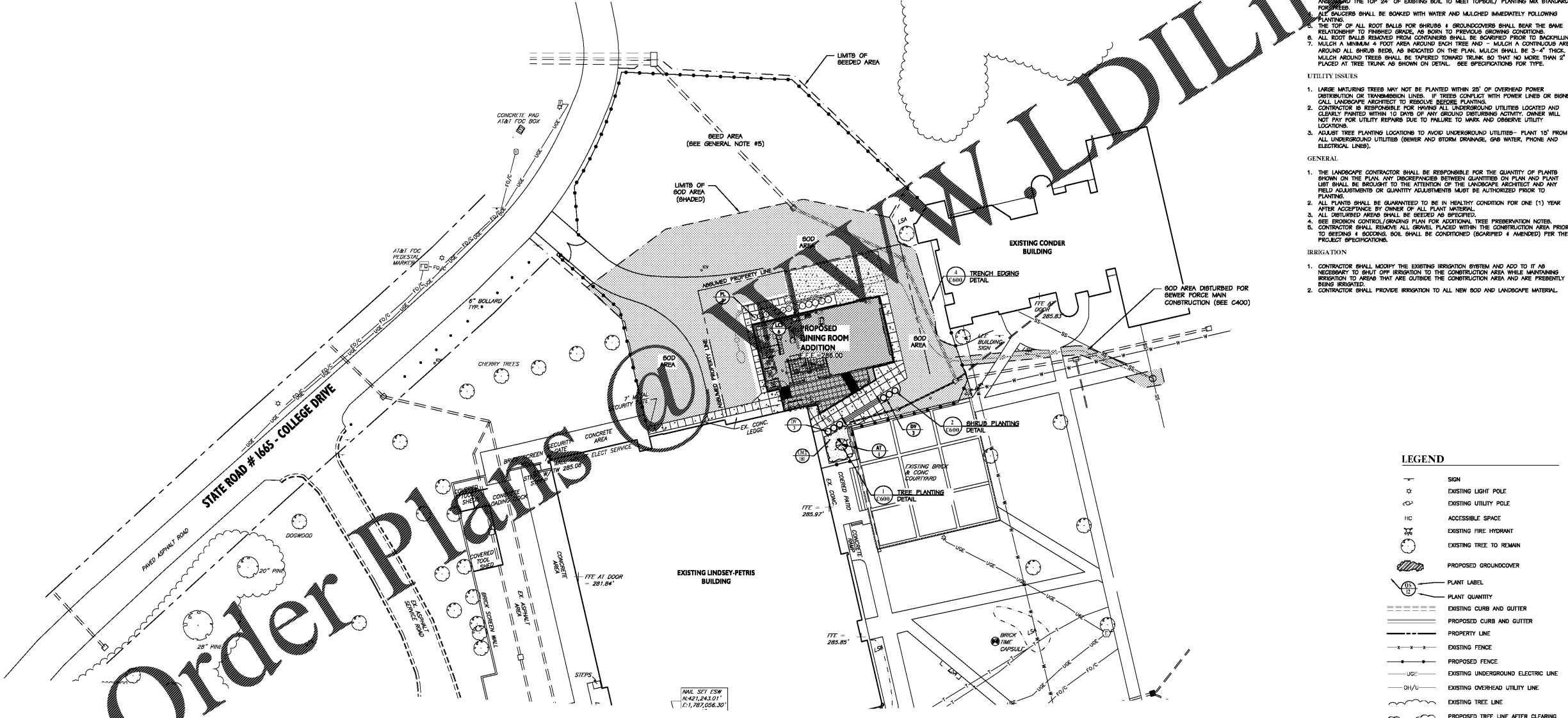
- NOTES
1. SCARIFY ROOT MASS OF CONTAINERIZED PLANT MATERIAL.
  2. INSTALL CONTAINERIZED PLANTS AT FINISHED GRADE.
  3. TAMP PLANTING MIX FIRMLY AS PIT IS FILLED AROUND EACH PLANT.
  4. OMIT COLLAR AROUND EACH SHRUB WHEN IRRIGATION SYSTEM IS PRESENT.
  5. SOAK EACH PLANT BALL AND FIT IMMEDIATELY AFTER INSTALLATION.
  6. SET SPECIFICATIONS FOR FURTHER SOIL AND PLANTING REQUIREMENTS.

1 Tree Planting Detail N.T.S.

2 Shrub Planting Detail N.T.S.

3 Groundcover Planting Detail N.T.S.

4 Trench Edging Detail N.T.S.



Order Plans

NEW BUILDING

**LANDSCAPE NOTES**

- PLANT MATERIAL
1. MINIMUM TREE SIZE AT PLANTING IS 2\"/>

- PLANTING REQUIREMENTS
1. PLANTS AND PARTS WILL NOT BE ACCEPTED FOR TREE STAKING. SEE DETAILS AND SPECIFICATIONS FOR APPROVED STAKING METHOD/MATERIALS.
  2. ALL STAKINGS, IN TOP 3\"/>

- UTILITY ISSUES
1. LARGE MATURING TREES MAY NOT BE PLANTED WITHIN 20\"/>

- GENERAL
1. THE LANDSCAPE CONTRACTOR SHALL BE RESPONSIBLE FOR THE QUANTITY OF PLANTS SHOWN ON THE PLAN. ANY DISCREPANCY BETWEEN QUANTITIES ON PLAN AND PLANT LIST SHALL BE BROUGHT TO THE ATTENTION OF THE LANDSCAPE ARCHITECT AND ANY FIELD ADJUSTMENTS OR QUANTITY ADJUSTMENTS MUST BE AUTHORIZED PRIOR TO PLANTING.

- IRRIGATION
1. CONTRACTOR SHALL MODIFY THE EXISTING IRRIGATION SYSTEM AND ADD TO IT AS NECESSARY TO SHUT OFF IRRIGATION TO THE CONSTRUCTION AREA WHILE MAINTAINING IRRIGATION TO AREAS THAT ARE OUTSIDE THE CONSTRUCTION AREA AND ARE PRESENTLY BEING IRRIGATED.

**LEGEND**

- SIGN
- EXISTING LIGHT POLE
- EXISTING UTILITY POLE
- ACCESSIBLE SPACE
- EXISTING FIRE HYDRANT
- EXISTING TREE TO REMAIN
- PROPOSED GROUNDCOVER
- PLANT LABEL
- PLANT QUANTITY
- EXISTING CURB AND GUTTER
- PROPOSED CURB AND GUTTER
- PROPERTY LINE
- EXISTING FENCE
- PROPOSED FENCE
- UG/E EXISTING UNDERGROUND ELECTRIC LINE
- OH/U EXISTING OVERHEAD UTILITY LINE
- EXISTING TREE LINE
- PROPOSED TREE LINE AFTER CLEARING
- PROPOSED MULCH LINE
- PROPOSED STORM DRAINAGE PIPE
- PROPOSED FOUNDATION DRAIN
- SANITARY SEWER LINE
- WATER LINE

TREES	QTY	BOTANICAL NAME / COMMON NAME	ROOT	CAL.	REMARKS	SIZE
AT	1	Acer palmatum 'Tamukeyama' / Tamukeyama Japanese Maple	B&B or Container	1.25' Cal	FULL	4'-6" HT.

SHRUBS	QTY	BOTANICAL NAME / COMMON NAME	CONT	REMARKS	HEIGHT	SPREAD
DV	6	Distylium x Vintage jade / Vintage jade Distylium	3 gal	4.5' O.C.	15'-18" HT.	18-24"
LC3	6	Loropetalum chinense 'Ruby' / Ruby Loropetalum	5 gal	4.5' O.C.	18-24" HT.	18-24"
PL	7	Prunus laurocerasus 'Otto Luyken' / Luykens Laurel	5 gal	4' O.C.	18-24" HT.	18-24"

GROUND COVERS	QTY	BOTANICAL NAME / COMMON NAME	CONT	REMARKS	SPACING
LM2	181	Liriope muscari 'Monroe White' / Monroe White Liriope	4" pot	16' O.C.	16' O.C.

**811**  
Know what's below.  
Call before you dig.

SCALE: 1" = 30'

NORTH



SCO #16-15889-02A

**RICHMOND COMMUNITY COLLEGE**

LINDSEY-PETRIS CAFETERIA / DINING ADDITION VOL.1

BID DOCUMENTS

**LANDSCAPE PLAN**

DATE 04.05.2019  
PROJECT NO 16063

REVISIONS

NO	DATE	DESCRIPTION

THIS DRAWING IS THE PROPERTY OF ADW ARCHITECTS, P.A. AND SHALL NOT BE REPRODUCED OR COPIED IN WHOLE OR IN PART. IT SHALL NOT BE USED ON ANY OTHER PROJECT OR GIVEN TO ANY OTHER COMPANY OR AGENCY WITHOUT THE CONSENT OF ADW ARCHITECTS, P.A.



SEAL 4/5/19

SHEET NUMBER **C600**