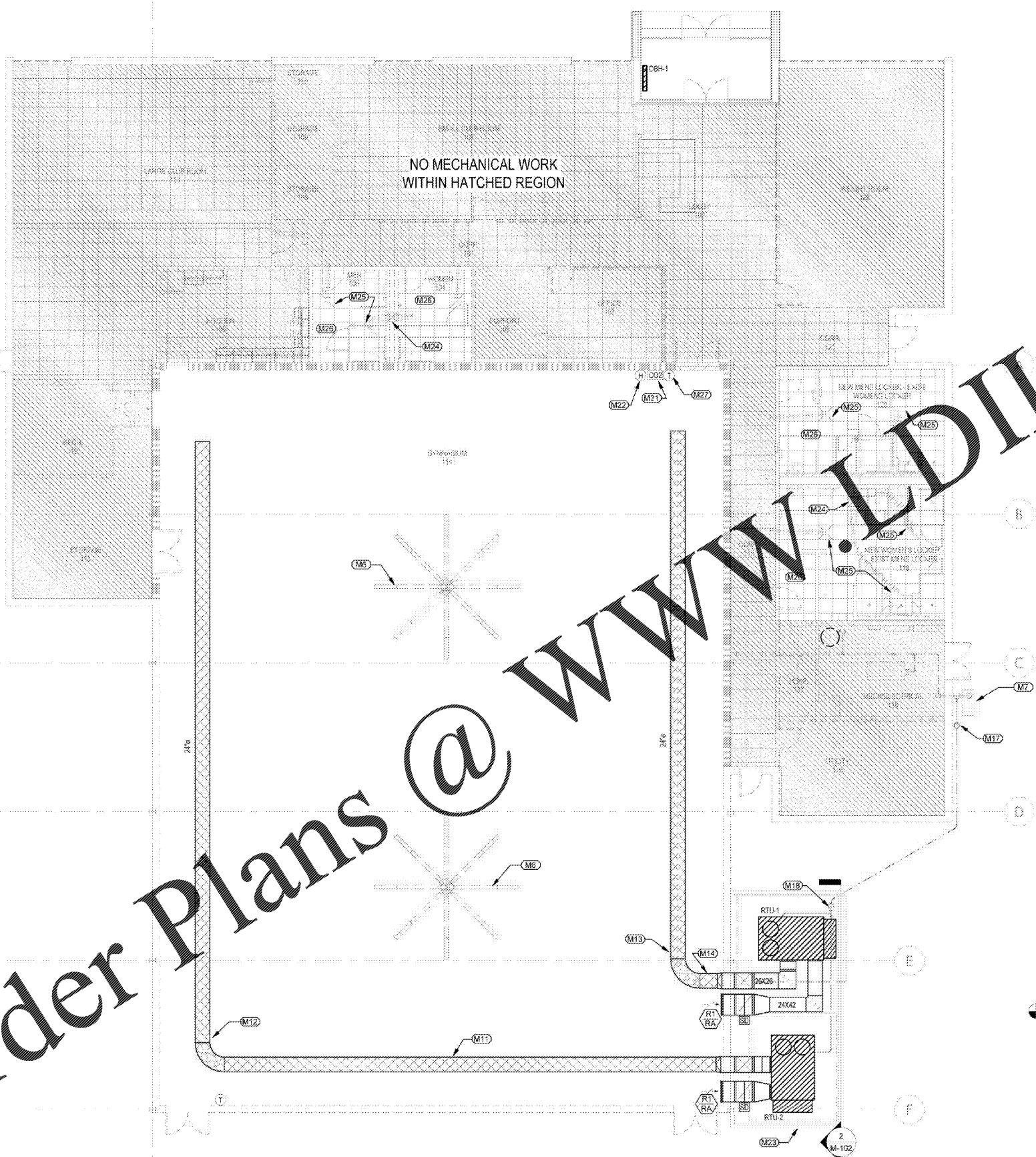


Order Plans @ WWWLDILine.com



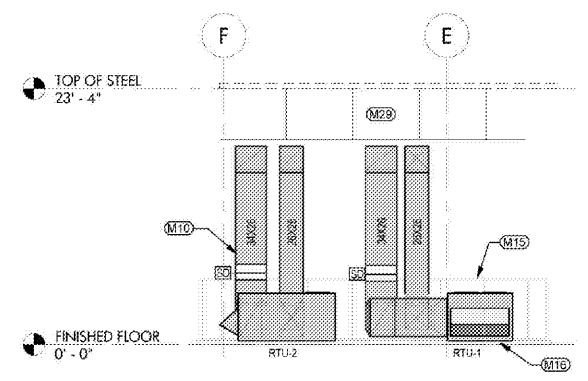
1 FIRST FLOOR - MECHANICAL
SCALE: 1/8" = 1'-0"

MECHANICAL LEGEND

	NEW SIDEWALL RETURN GRILLE. SEE AIR DISTRIBUTION SCHEDULE.
	EXISTING 7'X2' CEILING DIFFUSER TO REMAIN.
	EXISTING CEILING RETURN GRILLE TO REMAIN.
	NEW WALL-MOUNTED THERMOSTAT.
	EXISTING WALL-MOUNTED THERMOSTAT TO REMAIN.
	NEW WALL-MOUNTED HUMIDISTAT.
	EXISTING WALL-MOUNTED HUMIDISTAT TO REMAIN.
	NEW WALL-MOUNTED CO2 SENSOR.
	NEW SHEETMETAL DUCTWORK. SEE DETAIL.
	NEW FABRIC DUCTWORK. SEE DETAIL.
	EXISTING SHEETMETAL DUCTWORK TO REMAIN.
	EXISTING FABRIC DUCTWORK TO REMAIN.
	NEW DUCT-MOUNTED FAN (RATED FOR OUTDOOR USE). FINISHED BY M.C. & INSTALLED BY M.C. PROVIDE WEATHER-RESISTIVE ENCLOSURE.
	NEW PACKAGE UNIT MARK. SEE SCHEDULE.
	NEW DOOR BARRIER HEATER MARK. SEE SCHEDULE.
	INDICATES 2 HOUR RATED PARTITION.
	DIFFUSER MARK.
	DIFFUSER CFM.
	KEYNOTE SYMBOL. REFER TO MECHANICAL KEYNOTE LEGEND.
	NEW ABOVE-GRADE NATURAL GAS PIPING.
	EXISTING ABOVE-GRADE NATURAL GAS PIPING.
	NEW BELOW-GRADE NATURAL GAS PIPING.

MECHANICAL KEYNOTE LEGEND

KEY VALUE	KEYNOTE TEXT
M6	EXISTING CEILING FAN TO REMAIN.
M7	EXISTING GAS METER TO REMAIN.
M10	PROVIDE RIGID POLYISO INSULATION & WRAP WITH TPO MEMBRANE ON ALL EXTERIOR DUCTWORK. REFER TO DETAIL.
M11	THIS 16 FOOT LENGTH OF DUCTSOX SHALL NOT BE PERFORATED (NO VENTS).
M12	DOWNSTREAM OF ELBOW. PROVIDE 82 FEET OF STRAIGHT FABRIC DUCTSOX WITH LINEAR VENTS ON BOTTOM TO PROVIDE 4375 CFM OF SUPPLY AIR. REFER TO INSTALLATION DETAILS. COORDINATE INSTALLATION OF DUCTSOX WITH EXISTING BASKETBALL GOAL SUPPORTS.
M13	DOWNSTREAM OF ELBOW. PROVIDE 72 FEET OF STRAIGHT FABRIC DUCTSOX WITH LINEAR VENTS ON BOTTOM TO PROVIDE 4375 CFM OF SUPPLY AIR. REFER TO INSTALLATION DETAILS. COORDINATE INSTALLATION OF DUCTSOX WITH EXISTING BASKETBALL GOAL SUPPORTS.
M14	PROVIDE A MINIMUM OF 2' OF STRAIGHT DUCT PRIOR TO ELBOW.
M15	FENCE SURROUNDING PACKAGED UNITS BY OTHERS.
M16	CONCRETE PAD SHALL BE FOUNDED FOR BOTH RTU-1 & RTU-2. REFER TO PACKAGED UNIT MOUNTING DETAIL.
M17	CONNECT NEW 2" GAS PIPE TO EXISTING GAS PIPE OUTSIDE OF BUILDING. TURN DOWN AND ROUTE BELOW GRADE. BELOW GRADE PIPING SHALL BE PERFORMANCE PIPE, MODEL DRISCOPEX 8500 OR EQUAL. PROVIDE ANCOELESS RISER AT TRANSITION FROM ABOVE-GROUND TO UNDERGROUND GAS PIPING. REFER TO BOOK SPECIFICATIONS.
M18	ROUTE 2" GAS PIPING FROM BELOW GRADE TO ABOVE GRADE UP THROUGH SLEEVE PROVIDED BY OTHERS WITHIN FENCED REGION. COORDINATE EXACT LOCATION WITH G.C. PROVIDE ANCOELESS RISER AT TRANSITION FROM UNDERGROUND TO ABOVE-GROUND GAS PIPING.
M21	M.C. SHALL PROVIDE WALL-MOUNTED CO2 SENSOR. CONNECT TO EXISTING BUILDING AUTOMATION SYSTEM.
M22	M.C. SHALL PROVIDE WALL-MOUNTED HUMIDITY SENSOR. CONNECT TO EXISTING BUILDING AUTOMATION SYSTEM.
M23	M.C. SHALL COORDINATE LOCATION OF CONCRETE PAD WITH G.C.
M24	EXHAUST DUCT UP TO EXISTING ROOF-MOUNTED EXHAUST FAN TO REMAIN.
M25	REUSE EXISTING SUPPLY & EXHAUST GRILLES IN RESTROOM.
M26	EXHAUST RATE DOES NOT CHANGE IN RESTROOM. EXISTING ROOF-MOUNTED EXHAUST FAN SHALL REMAIN.
M27	PROVIDE TEMPERATURE SENSORS & CONNECT TO EXISTING BUILDING AUTOMATION SYSTEM. GAS TO TAKE AVERAGE OF ROOM TEMPERATURE. REFER TO SEQUENCE OF OPERATION.
M29	EXISTING WINDOWS TO REMAIN (TYPICAL).



2 PACKAGED UNIT ELEVATION
SCALE: 1/8" = 1'-0"



ARCHITECTURE
LANDSCAPE ARCHITECTURE
PLANNING
INTERIOR DESIGN

PO BOX1308
300 SOUTH DAWSON STREET
RALEIGH, NORTH CAROLINA 27602
FAX 919.828.4050
www.hagersmith.com

919.821.5547 © Copyright 2014



ASSOCIATES / CONSULTANTS



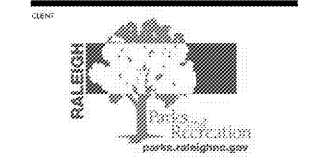
ENGINEERING FIRM NUMBER: 0-0110
BASS, NIXON & KENNEDY, INC.
CONSULTING ENGINEERS

5310 CHAPEL HILL ROAD, SUITE 250
RALEIGH, NC 27607
PHONE: 919.851.4422
FAX: 919.851.8968

Project Number

**BILTMORE HILLS
COMMUNITY
CENTER
RENOVATIONS**

2615 FITZGERALD DR
RALEIGH, NC 27610



222 W. HARGETT ST - 6TH FLOOR
RALEIGH, NC

FIRST FLOOR - MECHANICAL

REVISIONS	NUMBER	DESCRIPTION	DATE

DESIGN BY: MCC
CHECKED BY: MCC
DATE ISSUED: 8/13/18

M-102
2 OF 4