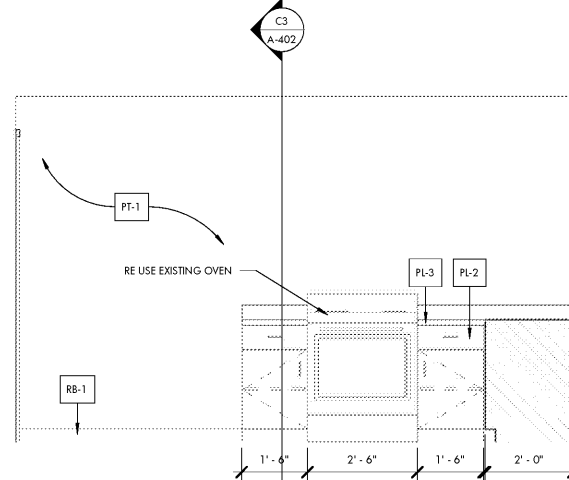
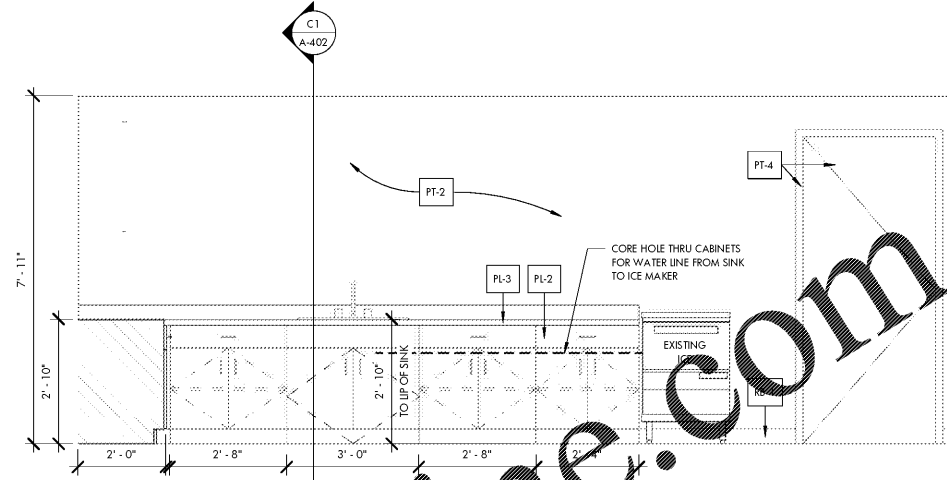


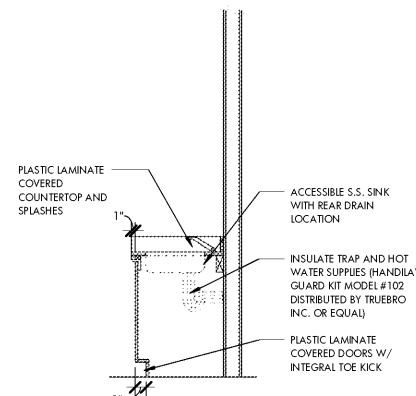
D1 NORTH KITCHEN ELEVATION
A-402 1/2" = 1'-0"



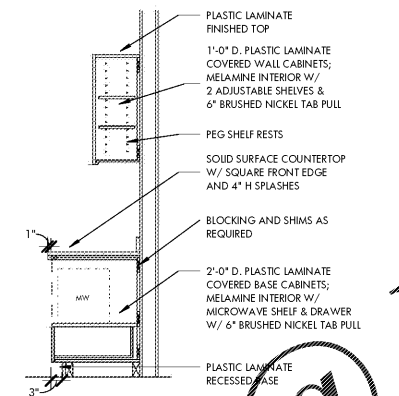
D2 EAST KITCHEN ELEVATION
A-402 1/2" = 1'-0"



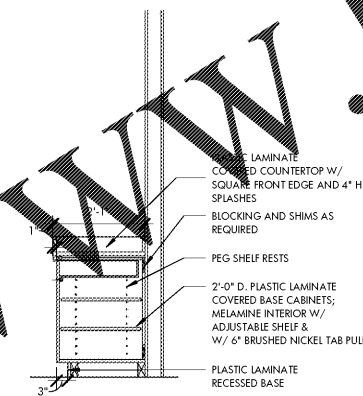
D4 SOUTH KITCHEN ELEVATION
A-402 1/2" = 1'-0"



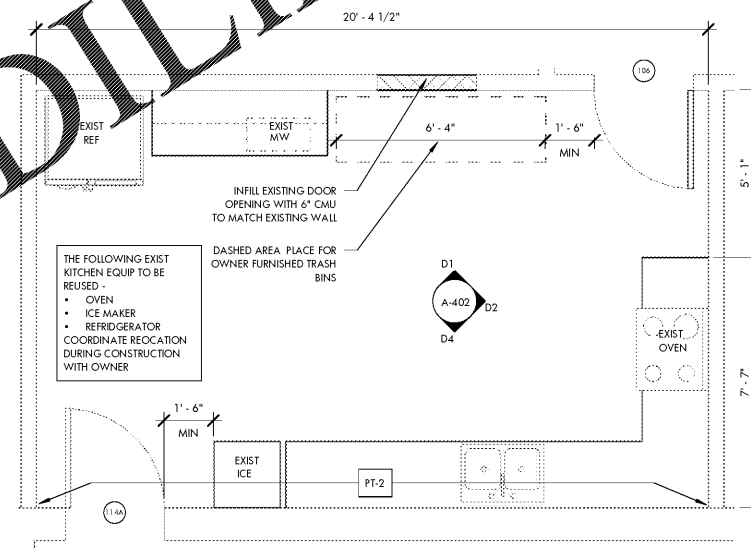
C1 ADA SINK SECTION
A-402 1/2" = 1'-0"



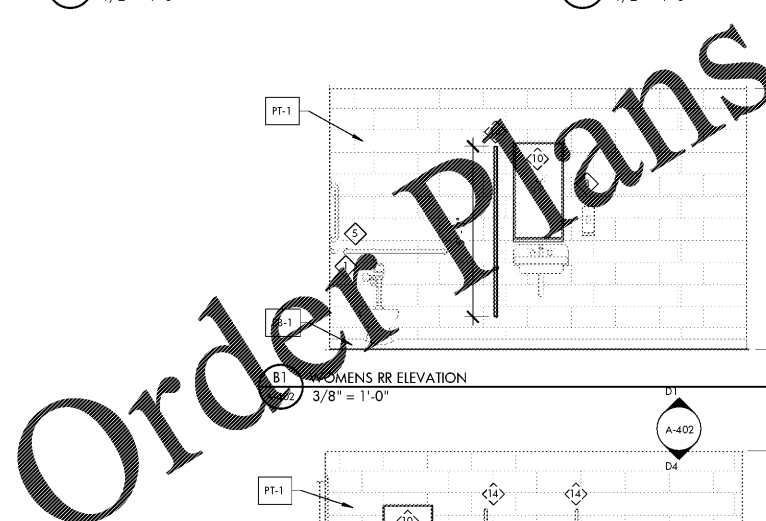
C2 ADA CABINET SECTION WITH MICROWAVE SHELF
A-402 1/2" = 1'-0"



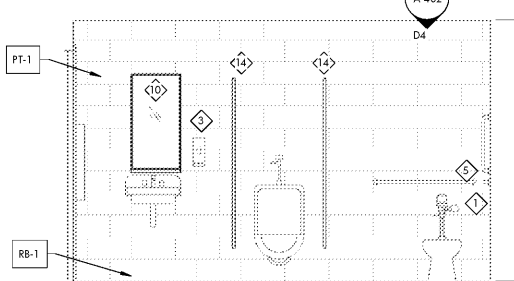
C3 MILLWORK SECTION
A-402 1/2" = 1'-0"



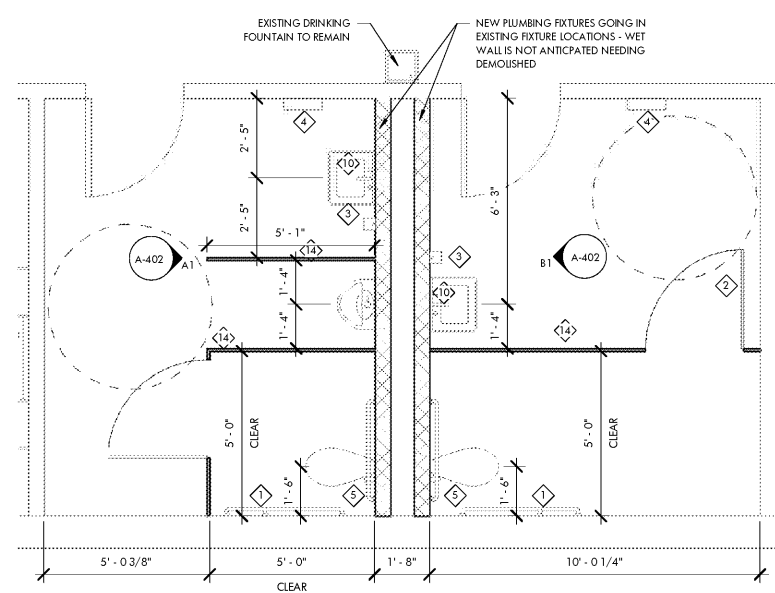
C4 ENLARGED KITCHEN PLAN
A-402 3/8" = 1'-0"



B1 WOMENS RR ELEVATION
A-402 3/8" = 1'-0"



A1 MENS RR ELEVATION
A-402 3/8" = 1'-0"



A3 TOILET ROOM ENLARGED PLAN
A-402 3/8" = 1'-0"

TOILET ACCESSORIES LEGEND: ALL ACCESSORIES TO BE SATIN FINISH STAINLESS STEEL UNLESS NOTED OTHERWISE.

TAG	ITEM	DESCRIPTION: BASIS OF DESIGN
1	SURFACE MOUNT TOILET TISSUE DISPENSER	PROVIDED BY OWNER - INSTALLED BY GC
2	COAT HOOK	BOBRICK B-212 COAT HOOK (ONE @ EACH TOILET STALL DOOR)
3	SURFACE MOUNT AUTOMATIC SOAP DISPENSER	PROVIDED BY OWNER - INSTALLED BY GC
4	SURFACE MOUNT TRASH RECEPTACLE WITH AUTOMATED PAPER TOWEL DISPENSER	PROVIDED BY OWNER - INSTALLED BY GC
5	GRAB BARS - TOILET SET	BOBRICK B-6806 X 18/36/42
6	GRAB BARS - SHOWER SET	BOBRICK B-6861 & B-6806 X 18
7	FOLDING SHOWER SEAT	BOBRICK B-5181
8	TOWEL HOOK	BOBRICK B-2116
9	SHOWER CURTAIN ROD	BOBRICK B-6107
10	MIRROR W/ SHELF	BOBRICK B-292 1836
11	BABY CHANGING STATION	BOBRICK/KOALA - KB200-SS
12	EXISTING BENCH - RE-USE	
13	EXISTING LOCKERS - RE-USE	
14	HDFE FLOOR MOUNTED OVERHEAD BRACED TOILET PARTITIONS	SCRANTON PRODUCTS - SEE FINISH SCHEDULE FOR COLOR
15	10' x 30" BENCH	

NUMBER	DESCRIPTION	DATE