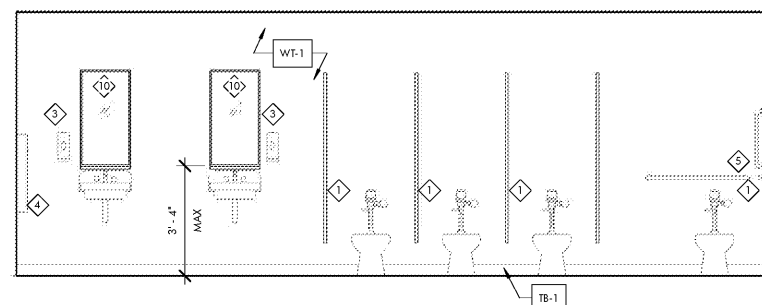


ASSOCIATES /

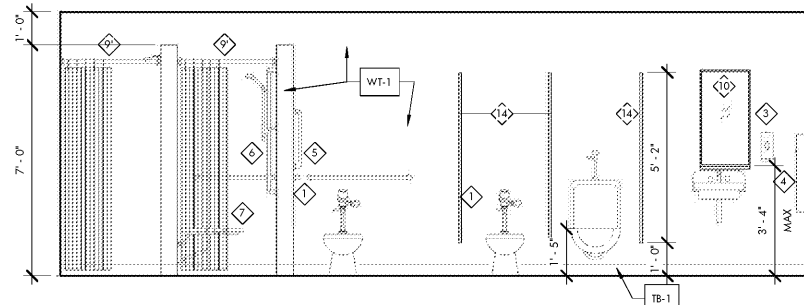
BNK

BASS, NIXON & KENNEDY, INC.
CONSULTING ENGINEERS

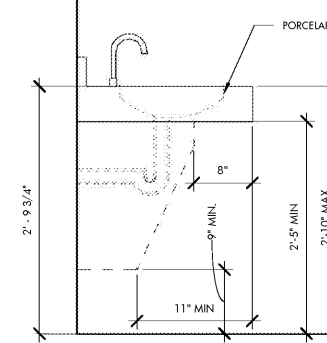
6310 CHAPPI HILL ROAD
RALEIGH, NC 27607
PHONE: 919.851.4422
FAX: 919.851.8968



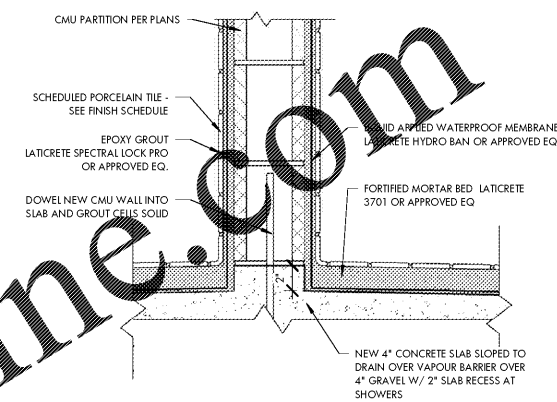
D1 WOMENS LOCKER ROOM WET WALL ELEVATION
A-401 3/8" = 1'-0"



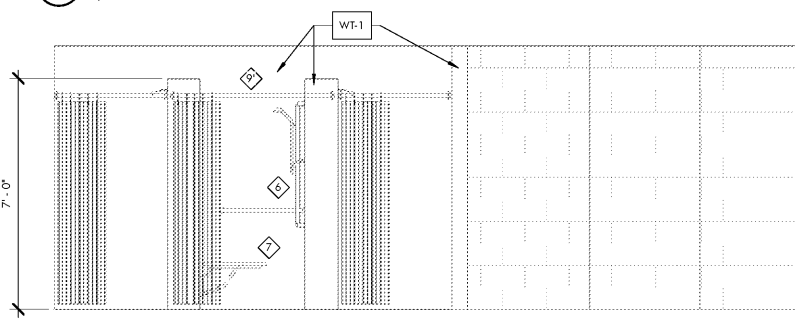
D2 MENS LOCKER ROOM WET WALL ELEVATION
A-401 3/8" = 1'-0"



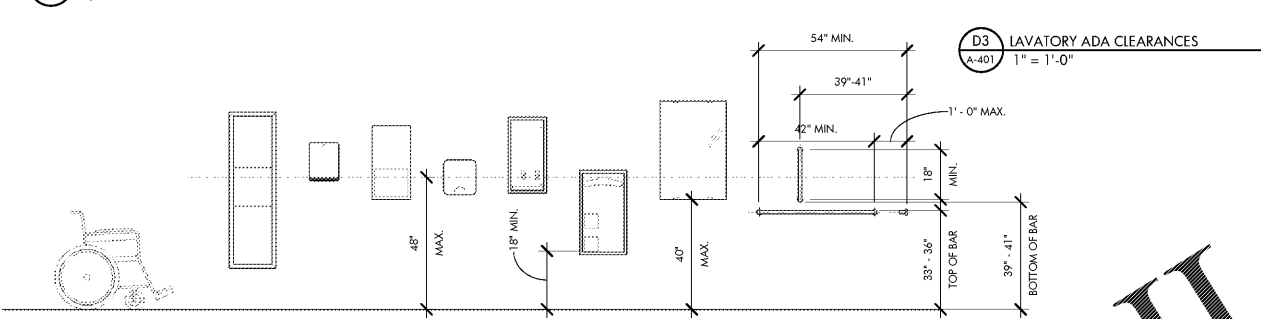
D3 LAVATORY ADA CLEARANCES
A-401 1" = 1'-0"



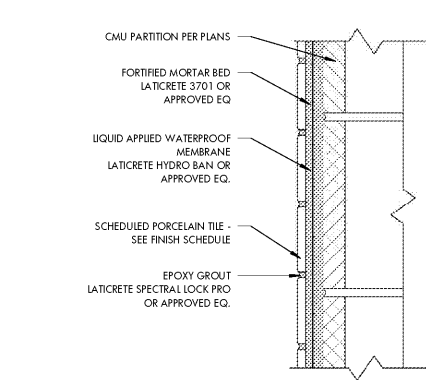
C4 SHOWER FLOOR TILE DETAIL
A-401 1:7



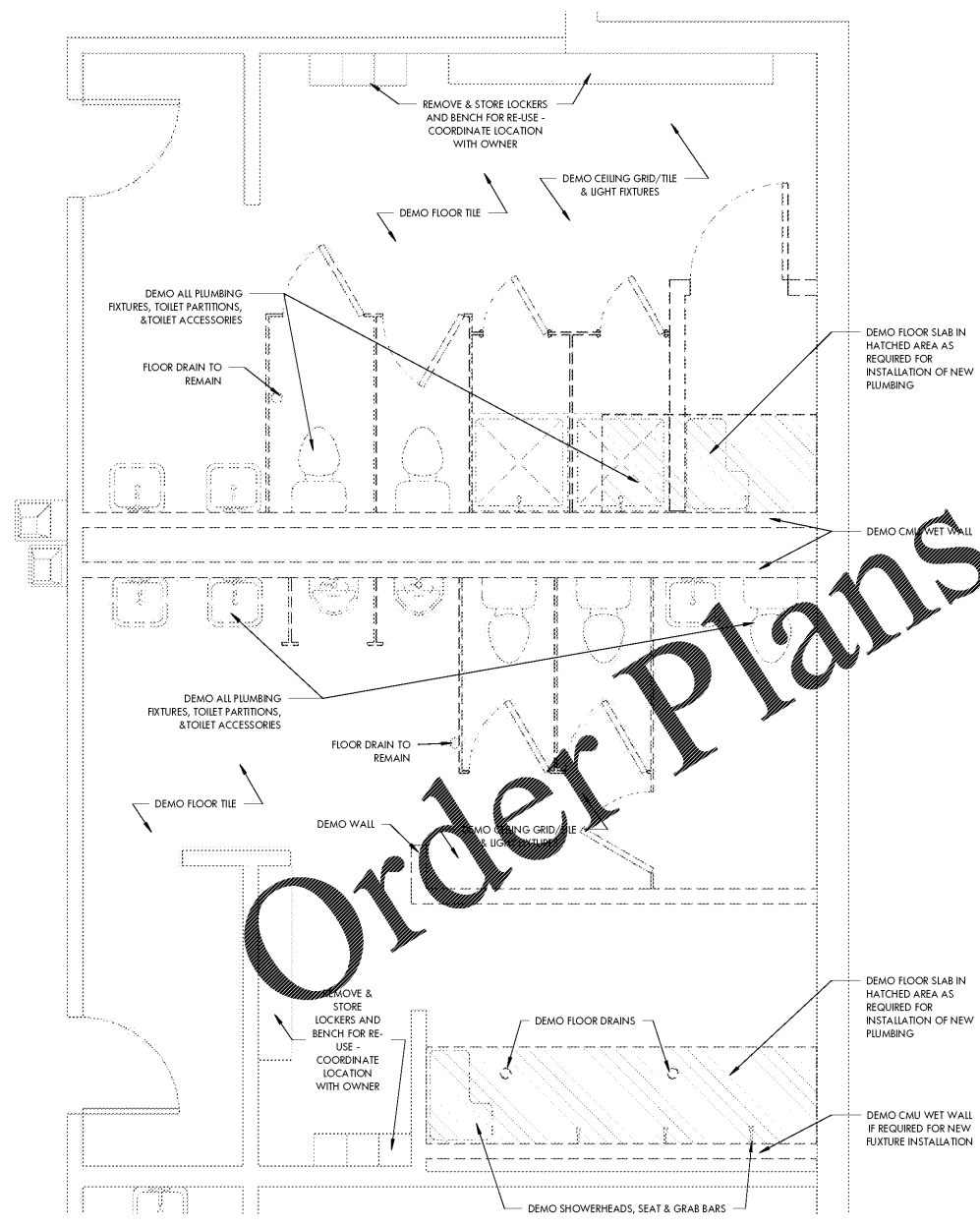
C1 WOMENS LOCKER ROOM SHOWER ELEVATION
A-401 3/8" = 1'-0"



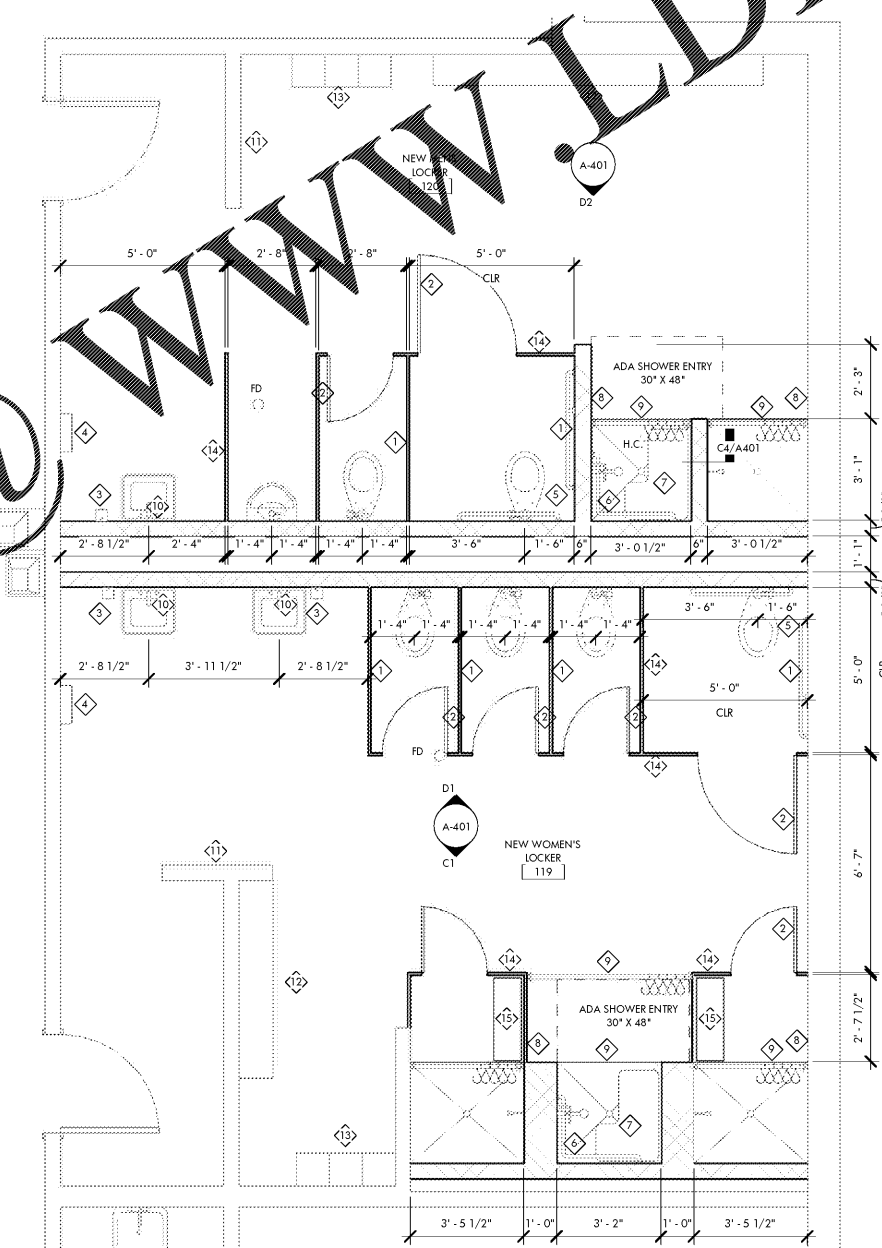
C2 TYP. MOUNTING HEIGHTS
A-401 3/8" = 1'-0"



B4 WALL TILE DETAIL
A-401 3" = 1'-0"



A1 ENLARGED LOCKER ROOM DEMOLITION PLAN
A-401 3/8" = 1'-0"



A2 ENLARGED LOCKER ROOM PLAN
A-401 3/8" = 1'-0"

TOILET ACCESSORIES LEGEND: ALL ACCESSORIES TO BE SATIN FINISH STAINLESS STEEL U.O.N

TAG	ITEM	DESCRIPTION: BASIS OF DESIGN
1	SURFACE MOUNT TOILET TISSUE DISPENSER	PROVIDED BY OWNER - INSTALLED BY GC
2	COAT HOOK	BOBRICK B-212 COAT HOOK (ONE @ EACH TOILET STALL DOOR)
3	SURFACE MOUNT AUTOMATIC SOAP DISPENSER	PROVIDED BY OWNER - INSTALLED BY GC
4	SURFACE MOUNT TRASH RECEPTACLE WITH AUTOMATED PAPER TOWEL DISPENSER	PROVIDED BY OWNER - INSTALLED BY GC
5	GRAB BARS - TOILET SET	BOBRICK B-6806 X 18/36/42
6	GRAB BARS - SHOWER SET	BOBRICK B-6861 & B-6806 X 18
7	FOLDING SHOWER SEAT	BOBRICK B-5181
8	TOWEL HOOK	BOBRICK B-2116
9	SHOWER CURTAIN ROD	BOBRICK B-6107
10	MIRROR W/ SHELF	BOBRICK B-292 1836
11	BABY CHANGING STATION	BOBRICK/KOALA - KB200-SS
12	EXISTING BENCH - RE-USE	
13	EXISTING LOCKERS - RE-USE	
14	HDPE FLOOR MOUNTED OVERHEAD BRACED TOILET PARTITIONS	SCRANTON PRODUCTS- SEE FINISH SCHEDULE FOR COLOR
15	10' x 30" BENCH	

- LOCKER ROOM GENERAL NOTES:**
- DIMENSIONS SHOWN ARE CLEAR DIMENSIONS - ACCOUNT FOR WALL FINISHES TO MAINTAIN REQUIRED CLEARANCES
 - PROVIDE CONT. WATERPROOFING MEMBRANE @ WET FLOOR/WET WALL TRANSITIONS
 - VERIFY FLOOR TILE PATTERN AND LAYOUT WITH ARCHITECT PRIOR TO INSTALLATION
 - SEE SHEET 602 FOR FINISH DESIGNATIONS
 - ALL TILE TO BE INSTALLED IN ACCORDANCE WITH MANUFACTURERS INSTRUCTIONS AND TCA STANDARDS

PROJECT 555-019

BILTMORE HILLS COMMUNITY CENTER RENOVATIONS

2615 FITZGERALD DR
RALEIGH, NC 27610

CLIENT

222 W. HARGETT ST - 6TH FLOOR
RALEIGH, NC

DRAWING TITLE

LOCKER ROOM PLANS & DETAILS

REVISIONS	NUMBER	DESCRIPTION	DATE

DRAWN BY Author
CHECKED BY Checker
DATE ISSUED 9/6/18

A-401
OF