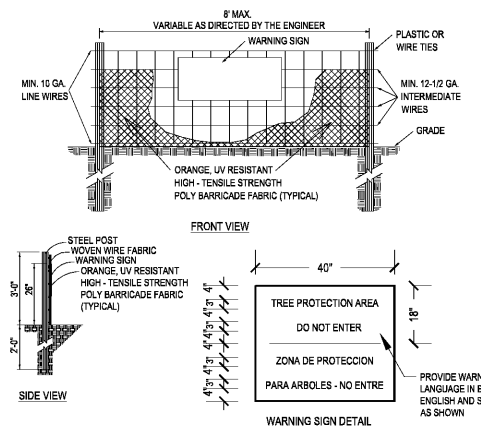
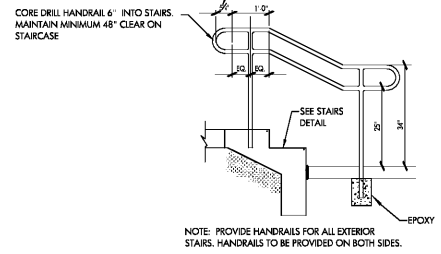


1 RAIL SECTION AND RAIL ELEVATION/STEP DETAIL  
L-501 NTS



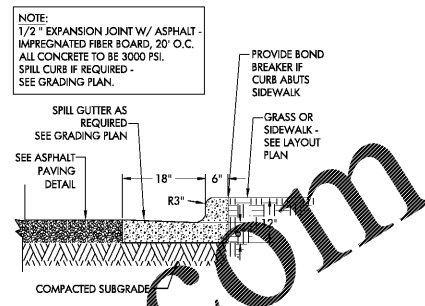
2 CITY OF RALEIGH TREE PROTECTION FENCE DETAIL  
L-501 NTS

- NOTES:
- TREE PROTECTION FENCING MUST BE INSTALLED AT A MINIMUM RADIUS OF THE CRITICAL ROOT ZONE (CRZ) OF TREES. (CRZ DEFINED AS RADIUS + 1.25 (FT) PER INCH AT DBH FROM TRUNK OF TREE, SEE TREE PROTECTION FENCE LAYOUT DETAIL).
  - IF CONSTRUCTION OCCURS WITHIN THE CRZ AT LEAST 12" OF MULCH AND/OR LOGGING MATS SHALL BE PLACED WHERE MACHINERY MANUEVERS TO REDUCE SOIL COMPACTION IN THIS ZONE.
  - THE TREE PROTECTION FENCING MUST NOT BE VIOLATED FOR THE ENTIRE DURATION OF THE PROJECT WITHOUT APPROVAL FROM URBAN FORESTRY STAFF.
  - THERE WILL BE ZERO TOLERANCE FOR STORING OR PARKING VEHICLES, SUPPLIES OR EQUIPMENT UNDER PROTECTED TREES.
  - IMPACT PROTECTION DEVICES MUST BE REMOVED AFTER CONSTRUCTION.
  - WARNING SIGNS TO BE MADE OF DURABLE, WEATHERPROOF MATERIAL. LETTERS TO BE 9" HIGH MINIMUM, CLEARLY LEGIBLE AND SPACED AS SHOWN. SIGNS SHALL BE PLACED AT 50' MAXIMUM INTERVALS. PLACE A SIGN AT EACH END OF LINEAR TREE PROTECTION AND 50' ON CENTER THEREAFTER. FOR TREE PROTECTION AREAS LESS THAN 200' IN PERIMETER, PROVIDE NO LESS THAN ONE SIGN PER PROTECTION AREA.
  - ATTACH SIGNS SECURELY TO FENCE POSTS AND FABRIC. MAINTAIN TREE PROTECTION FENCE THROUGHOUT DURATION OF PROJECT.
  - A TREE IMPACT PERMIT IS REQUIRED.
  - ADHERE TO STANDARDS IN THE CITY TREE MANUAL.

CONTACT INFORMATION:  
CITY OF RALEIGH PARKS, RECREATION AND CULTURAL RESOURCES DEPARTMENT  
URBAN FORESTER:  
TREES@RAL.EGHC.NC.GOV  
WWW.RALEIGH.NC.GOV

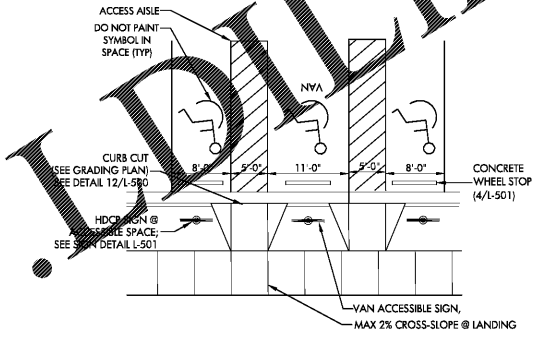
CITY OF RALEIGH  
PARKS, RECREATION AND CULTURAL RESOURCES DEPT  
RELEASED DATE 9/18 NOT TO SCALE

TREE PROTECTION FENCE  
**PRCR-01**

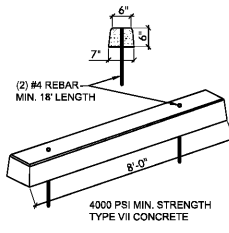


3 24" CURB & GUTTER (OR TO MATCH EXISTING)  
L-501 NTS

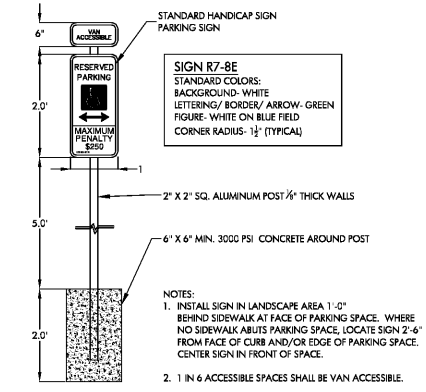
- NOTES:
- MARK PAVEMENT TO CLEARLY DELINEATE ACCESSIBLE SPACES & AISLES. PAINT MARKING TO BE WHITE, 4" WIDTH.
  - SITE CONDITIONS & NUMBER OF ACCESSIBLE SPACES MAY VARY. ADJUST AS REQUIRED. VERIFY WITH LANDSCAPE ARCHITECT, AS NEEDED.
  - IN CASES WHERE PEDESTRIAN PATH PASSES UNDER OR AROUND AN ACCESSIBLE SIGN, USE 6.25" AS MIN DIMENSION BETWEEN GROUND AND BASE OF SIGN.
- RAMP:  
L = 5'-0"  
S = 6.25%  
XS = 2% MAX.



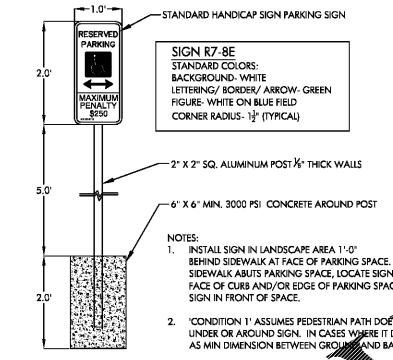
7 TYPICAL ACCESSIBLE PARKING SPACES LAYOUT  
L-501 NTS



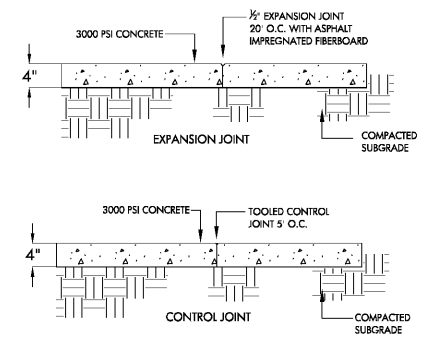
4 CONCRETE WHEEL STOP  
L-501 NTS



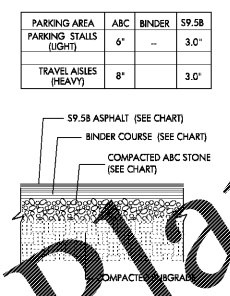
5 VAN ACCESSIBLE PARKING SPACE SIGN  
L-501 NTS



6 ACCESSIBLE PARKING SPACE SIGN  
L-501 NTS

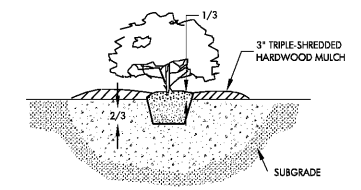


8 CONCRETE SIDEWALK  
L-501 NTS



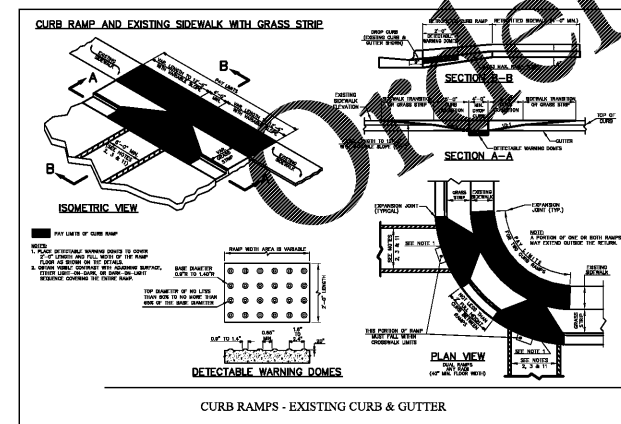
9 ASPHALT PAVING  
L-501 NTS

10 RESERVED  
L-501 NTS

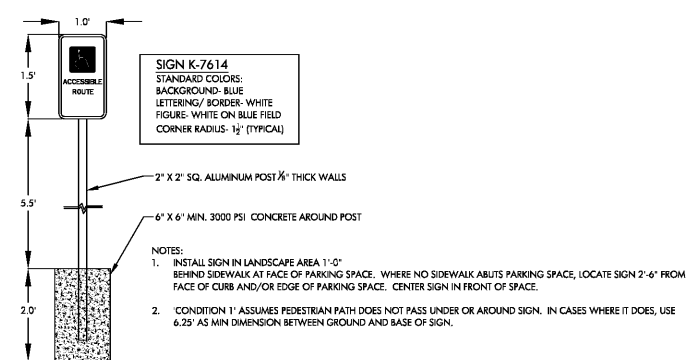


- PLANTING PROCEDURES FOR CONTAINER PLANTS:
- REMOVE THE PLANT EITHER BY CUTTING OR INVERTING THE CONTAINER.
  - PLANT SHRUBS 1/3 CONTAINER HEIGHT, MOUND SOIL AND MULCH TO TOP.

11 CONTAINER GROWN PLANT  
L-501 NTS



12 ACCESSIBLE CURB RAMP  
L-501 NTS



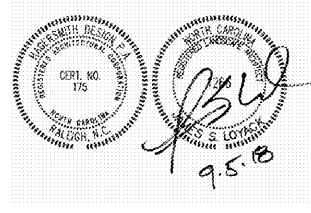
13 ACCESSIBLE ROUTE SIGN  
L-501 NTS



ARCHITECTURE  
LANDSCAPE ARCHITECTURE  
PLANNING  
INTERIOR DESIGN

PO BOX 1308  
300 SOUTH DAWSON ST  
RALEIGH, NC 27602  
919.821.5547  
WWW.HAGERSMITH.COM

© COPYRIGHT 2017



## BILTMORE HILLS PARK COMMUNITY CENTER ACCESSIBILITY IMPROVEMENTS

City of Raleigh Parks,  
Recreation, and  
Cultural Resources  
Raleigh Municipal Building  
222 W. Hargett St.

### SITE DETAILS

Number	Description	Date

Drawn By: BTK  
Checked By: JSL  
Date Issued: 9/6/18

L-501  
of