

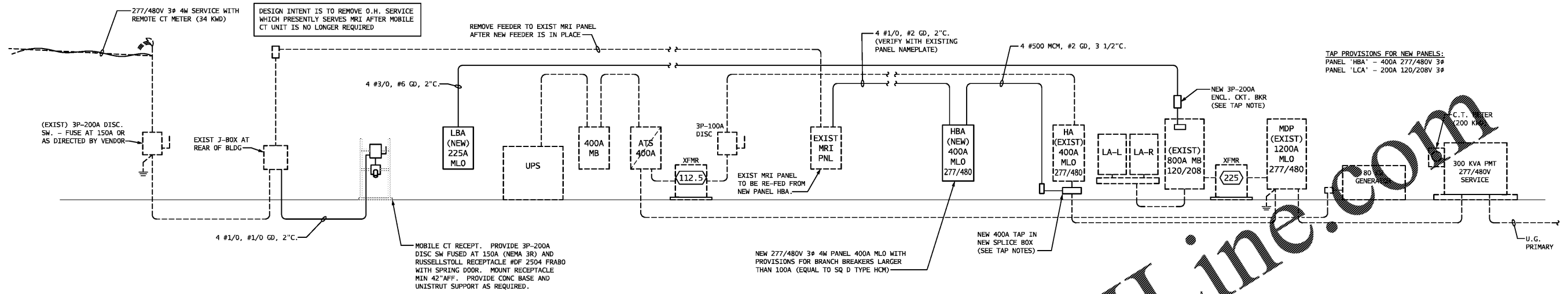


EXPIRATION DATE:
 COPYRIGHT NOTICE
 THE DRAWINGS ARE THE PROPERTY OF RIVER STREET ARCHITECTURE LLC. ANY USE, REUSE, REPRODUCTION, DISPLAY OR SALE OF THESE DRAWINGS WITHOUT THE EXPRESS WRITTEN CONSENT OF THE ARCHITECT IS STRICTLY PROHIBITED.

river street architecture
 architecture planning interiors
 123 E 7th street, suite 400 chattanooga, tennessee 37402
 p. 423.634.0806 www.riverstreetarchitecture.com

RENOVATION + PET/CT PROJECT
 CHATTANOOGA OUTPATIENT CENTER
 1301 MCCALLIE AVE, CHATTANOOGA TN 37404

Revision Schedule
 Rev. # | Rev. Date | Revision Description
 Release Date: 5.3.2019
 Project #: 19010
ELECTRICAL DETAILS
E3.01



ELECTRICAL RISER DIAGRAM
 NO SCALE

HBA											
ROOM		VOLTS 480Y/277V 3P 4W			AIC 22,000						
MOUNTING SURFACE		BUS AMPS 400			MAIN BKR MLO						
FED FROM UTILITY		NEUTRAL 100%			LUGS STANDARD						
NOTE: SQ D TYPE HCM											
CKT #	CKT BKR	CIRCUIT DESCRIPTION	LOAD KVA			CKT #	CKT BKR	CIRCUIT DESCRIPTION	LOAD KVA		
1	30/3	CT/PET CHILLER	3.44	3.44	3.44	2	125/3	CT/PET	11.6	11.6	11.6
3	-/1	SPACE	0	0	0	4	-/1	SPACE	0	0	0
5	-/1	SPACE	0	0	0	6	-/1	SPACE	0	0	0
7	150/3	MRI PANEL (VERIFY BREAKER SIZE)	0	0	0	8	30/3	SPARE	0	0	0
9	-/1	SPACE	0	0	0	10	-/1	SPACE	0	0	0
11	60/3	SPARE	0	0	0	12	-/1	SPACE	0	0	0
13	-/1	SPACE	0	0	0	14	100/3	SPARE	0	0	0
15	-/1	SPACE	0	0	0	16	-/1	SPACE	0	0	0
17	-/1	SPACE	0	0	0	18	-/1	SPACE	0	0	0
19	-/1	SPACE	0	0	0	20	-/1	SPACE	0	0	0
21	-/1	SPACE	0	0	0	22	-/1	SPACE	0	0	0
23	-/1	SPACE	0	0	0	24	-/1	SPACE	0	0	0
25	-/1	SPACE	0	0	0	26	-/1	SPACE	0	0	0
27	-/1	SPACE	0	0	0	28	-/1	SPACE	0	0	0
29	-/1	SPACE	0	0	0	30	-/1	SPACE	0	0	0
31	-/1	SPACE	0	0	0	32	-/1	SPACE	0	0	0
33	-/1	SPACE	0	0	0	34	-/1	SPACE	0	0	0
35	-/1	SPACE	0	0	0	36	-/1	SPACE	0	0	0
37	-/1	SPACE	0	0	0	38	-/1	SPACE	0	0	0
39	-/1	SPACE	0	0	0	40	-/1	SPACE	0	0	0
41	-/1	SPACE	0	0	0	42	-/1	SPACE	0	0	0
TOTAL CONNECTED KVA BY PHASE									15	15	15
TOTAL CONNECTED AMPS BY PHASE									54.3	54.3	54.3
CONN KVA			CALC KVA			CONN KVA			CALC KVA		
MOTORS 10.3			10.3 (100%)			TOTAL LOAD 45.1			45.1		
NONCONTINUOUS 34.8			34.8 (50%)			BALANCED 3-PHASE AMPS 54.3			54.3		

LBA											
ROOM		VOLTS 208Y/120V 3P 4W			AIC 22,000						
MOUNTING SURFACE		BUS AMPS 225			MAIN BKR MLO						
FED FROM UTILITY		NEUTRAL 100%			LUGS STANDARD						
NOTE: SQ D TYPE HCM											
CKT #	CKT BKR	CIRCUIT DESCRIPTION	LOAD KVA			CKT #	CKT BKR	CIRCUIT DESCRIPTION	LOAD KVA		
1	20/1	LIGHTING	1	1	0.36	2	20/1	RECEPTACLES	1.26	1.26	1.44
3	20/1	LIGHTING	0	0	0	4	20/1	RECEPTACLES	0	0	0
5	20/1	RECEPTACLES	1.26	0.9	0.9	6	20/1	RECEPTACLES	1.08	0.72	1.26
7	20/1	RECEPTACLES	0	0	0	8	20/1	RECEPTACLES	1.62	0.72	0.8
9	20/1	RECEPTACLES	0	0	0	10	20/1	RECEPTACLES	0	0	0
11	20/1	RECEPTACLES	0	0	0	12	20/1	RECEPTACLES	0	0	0
13	20/1	RECEPTACLES	0	0	0	14	20/1	RECEPTACLES	0	0	0
15	20/1	RECEPTACLES	0	0	0	16	20/1	RECEPTACLES	0	0	0
17	20/1	VAV BOXES	0	0	0	18	20/1	ROOF RECEPTACLE	0	0	0
19	20/1	SPARE	0	0	0	20	20/1	SPARE	0	0	0
21	20/1	SPARE	0	0	0	22	20/1	SPARE	0	0	0
23	20/1	SPARE	0	0	0	24	20/1	SPARE	0	0	0
25	20/1	SPARE	0	0	0	26	20/1	SPARE	0	0	0
27	20/1	SPARE	0	0	0	28	20/1	SPARE	0	0	0
29	20/1	SPARE	0	0	0	30	20/1	SPARE	0	0	0
31	20/1	SPARE	0	0	0	32	20/1	SPARE	0	0	0
33	20/1	SPARE	0	0	0	34	20/1	SPARE	0	0	0
35	20/1	SPARE	0	0	0	36	20/1	SPARE	0	0	0
37	-/1	SPACE	0	0	0	38	-/1	SPACE	0	0	0
39	-/1	SPACE	0	0	0	40	-/1	SPACE	0	0	0
41	-/1	SPACE	0	0	0	42	-/1	SPACE	0	0	0
43	-/1	SPACE	0	0	0	44	-/1	SPACE	0	0	0
45	-/1	SPACE	0	0	0	46	-/1	SPACE	0	0	0
47	-/1	SPACE	0	0	0	48	-/1	SPACE	0	0	0
49	-/1	SPACE	0	0	0	50	-/1	SPACE	0	0	0
51	-/1	SPACE	0	0	0	52	-/1	SPACE	0	0	0
53	-/1	SPACE	0	0	0	54	-/1	SPACE	0	0	0
TOTAL CONNECTED KVA BY PHASE									7.3	5.32	5.76
TOTAL CONNECTED AMPS BY PHASE									80.8	44.3	48
CONN KVA			CALC KVA			CONN KVA			CALC KVA		
LIGHTING 2			2.5 (125%)			TOTAL LOAD 15.7			15.7		
RECEPTACLES 16.4			13.2 (50%-10)			BALANCED 3-PHASE AMPS 43.6			43.6		

BRANCH CIRCUIT WIRING SCHEDULE	
Description of Branch Circuit Over-Current Protection Device	Description of Wiring
15A/1P, 20A/1P	2 #12 + #10 EG, 3/4" C
25A/1P, 30A/1P	2 #10 + #10 EG, 3/4" C
15A/1P/IG, 20A/1P/IG	2 #12 + #12 EG + #12 IG, 3/4" C
25A/1P/IG, 30A/1P/IG	2 #10 + #10 EG + #10 IG, 3/4" C
15A/2P, 20A/2P	2 #12 + #12 EG, 3/4" C
25A/2P, 30A/2P	3 #10 + #10 EG, 3/4" C
35A/2P, 40A/2P	2 #8 + #10 EG, 3/4" C
35A/3P, 40A/3P	3 #8 + #10 EG, 3/4" C
45A/2P, 50A/2P, 60A/2P	2 #6 + #10 EG, 3/4" C
45A/3P, 50A/3P, 60A/3P	3 #6 + #10 EG, 3/4" C
70A/2P, 80A/2P	2 #4 + #8 EG, 3/4" C
70A/3P, 80A/3P	3 #4 + #8 EG, 1" C
90A/2P	2 #3 + #8 EG, 1" C
100A/2P	2 #2 + #8 EG, 1 1/4" C
90A/3P	3 #3 + #8 EG, 1" C
100A/3P	3 #2 + #8 EG, 1 1/4" C
110A/2P, 125A/2P, 130A/2P	2 #1 + #8EG, 1 1/4" C
110A/3P, 125A/3P, 130A/3P	3 #1 + #8EG 1 1/4" C
150A/2P	2 #1/0 + #6 EG, 1 1/4" C
150A/3P	3 #1/0 + #6 EG, 1 1/4" C
175A/2P	2 #2/0 + #6 EG, 1 1/4" C
175A/3P	3 #2/0 + #6 EG, 1 1/2" C
200A/2P	2 #3/0 + #6 EG, 1 1/2" C
200A/3P	3 #3/0 + #6 EG, 2" C

ELECTRICAL SYMBOLS		
SYMBOL	DESCRIPTION	MOUNTING *
→	ARROW INDICATES CIRCUIT HOMERUN	---
	TICK MARKS INDICATE WIRE QUANTITY (MORE THAN 2)	---
▨	PANELBOARD - DISTRIBUTION	78" AFF
▩	PANELBOARD	78" AFF
□	DISCONNECT SWITCH	48" AFF
⊕	JUNCTION BOX (NOTAL SHOWN)	AS NOTED
⊞	JUNCTION BOX	AS NOTED
⊙	MOTOR	---
⊕	DUPLEX RECEPTACLE	16" AFF *
⊕	DUPLEX RECEPTACLE ABOVE COUNTER	---
⊕	DUPLEX RECEPTACLE W/ WEATHERPROOF COVER	16" AFF *
⊕	DUPLEX RECEPTACLE W/ GROUND FAULT INTERRUPTER	16" AFF *
⊕	QUADREX RECEPTACLE	16" AFF *
⊕	DUPLEX RECEPTACLE W/ USB PORTS	36" AFF *
⊕	LEVITON T-5832	---
⊕	SPECIAL RECEPTACLE - NEMA CONFIG. NOTED	16" AFF *
⊕	SPECIAL RECEPTACLE - NEMA CONFIG. NOTED	16" AFF *
⊕	DUPLEX RECEPTACLE - FLUSH MOUNT IN FLOOR	FLOOR
⊕	MULTIPLE SERVICE FLOOR OUTLET	FLOOR
S	SWITCH - SINGLE POLE	48" AFF **
S ₃	SWITCH - 3 WAY	48" AFF **
S ₄	SWITCH - 4 WAY	48" AFF **
S _d	SWITCH - DIMMER	48" AFF **
S _{3d}	SWITCH - DIMMER (3-WAY)	48" AFF **
S _c	SWITCH - SPEED CONTROL	48" AFF **
S _m	SWITCH - MOTION DETECTOR	48" AFF **
⊕	COMBINATION VOICE/DATA OUTLET	16" AFF
⊕	FLUSH WALLBOX WITH 3/4" STUB ABV CLG	48" AFF OR AS NOTED *
⊕	TV/POWER WALL BOX, EQUAL TO ARLINGTON TVB5505 WITH NEMA 5-20R RECEPT & 1" STUB ABV CLG	48" AFF OR AS NOTED *
⊕	THERMOSTAT	48" AFF **
AFF	ABOVE FINISHED FLOOR	---
AFC	ABOVE FINISHED CEILING	---
BFC	BELOW FINISHED CEILING	---

* REFER TO DRAWINGS AND SPECIFICATIONS FOR ADDITIONAL INFORMATION
 ** HANDLE OR OPERATOR-DEVICE MUST BE LOCATED NO MORE THAN 48" AFF, FOR COMPLIANCE WITH ADA

Order Plans

