

EXPIRATION DATE:

COPYRIGHT NOTICE
THE DRAWINGS ARE THE PROPERTY OF RIVER STREET ARCHITECTURE LLC. ANY USE, REUSE, REPRODUCTION, DISPLAY OR SALE OF THESE DRAWINGS WITHOUT THE EXPRESS WRITTEN CONSENT OF THE ARCHITECT IS STRICTLY PROHIBITED.

river street
ARCHITECTURE
123 E 7th street, suite 400 chattanooga, tennessee 37402
P-423 634 0806 www.riverstreetarchitecture.com

RENOVATION + PET/CT PROJECT
PRIMEIMAGING
CHATTANOOGA OUTPATIENT CENTER
1301 MCCALLIE AVE., CHATTANOOGA TN 37404

Revision Schedule		
Rev. #	Rev. Date	Revision Description

Release Date: 05.03.2019
Project No.: 19010

ENLARGED PET/CT PLAN

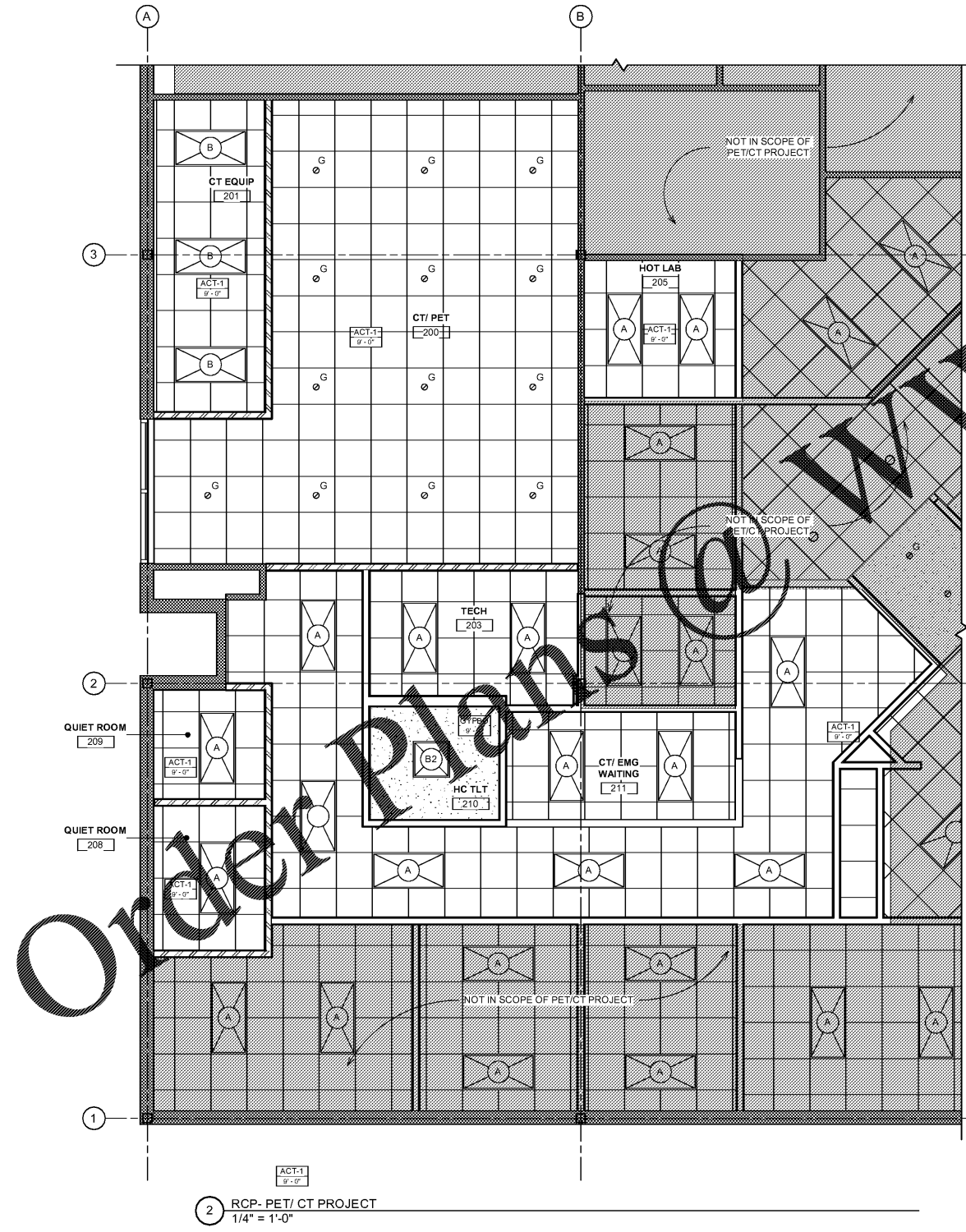
A1.03

LIGHTING LEGEND			
	FIXTURE A 2X4 DIMMABLE LED CONTEMPORARY ARCHITECTURAL FIXTURE SPEC: COLUMBIA CONTACT: RANDY SMITH @ FACTORY SALES		FIXTURE F 4" DIA. RECESSED LED DOWNLIGHT SPEC: PRESCOLITE CONTACT: RANDY SMITH @ FACTORY SALES
	FIXTURE A2 2X2 DIMMABLE LED CONTEMPORARY ARCHITECTURAL FIXTURE SPEC: COLUMBIA CONTACT: RANDY SMITH @ FACTORY SALES		FIXTURE G 6" DIA. RECESSED LED DOWNLIGHT SPEC: PRESCOLITE CONTACT: RANDY SMITH @ FACTORY SALES
	FIXTURE B 2X4 DIMMABLE LED CONTEMPORARY ARCHITECTURAL TROFFER SPEC: COLUMBIA CONTACT: RANDY SMITH @ FACTORY SALES	NOTES: 1. NO LIGHTING SUBSTITUTIONS 2. COORDINATE ALL LIGHTING WITH ELECTRICAL LIGHTING PLAN (E1.01)	
	FIXTURE B2 2X2 DIMMABLE LED CONTEMPORARY ARCHITECTURAL TROFFER SPEC: COLUMBIA CONTACT: RANDY SMITH @ FACTORY SALES		

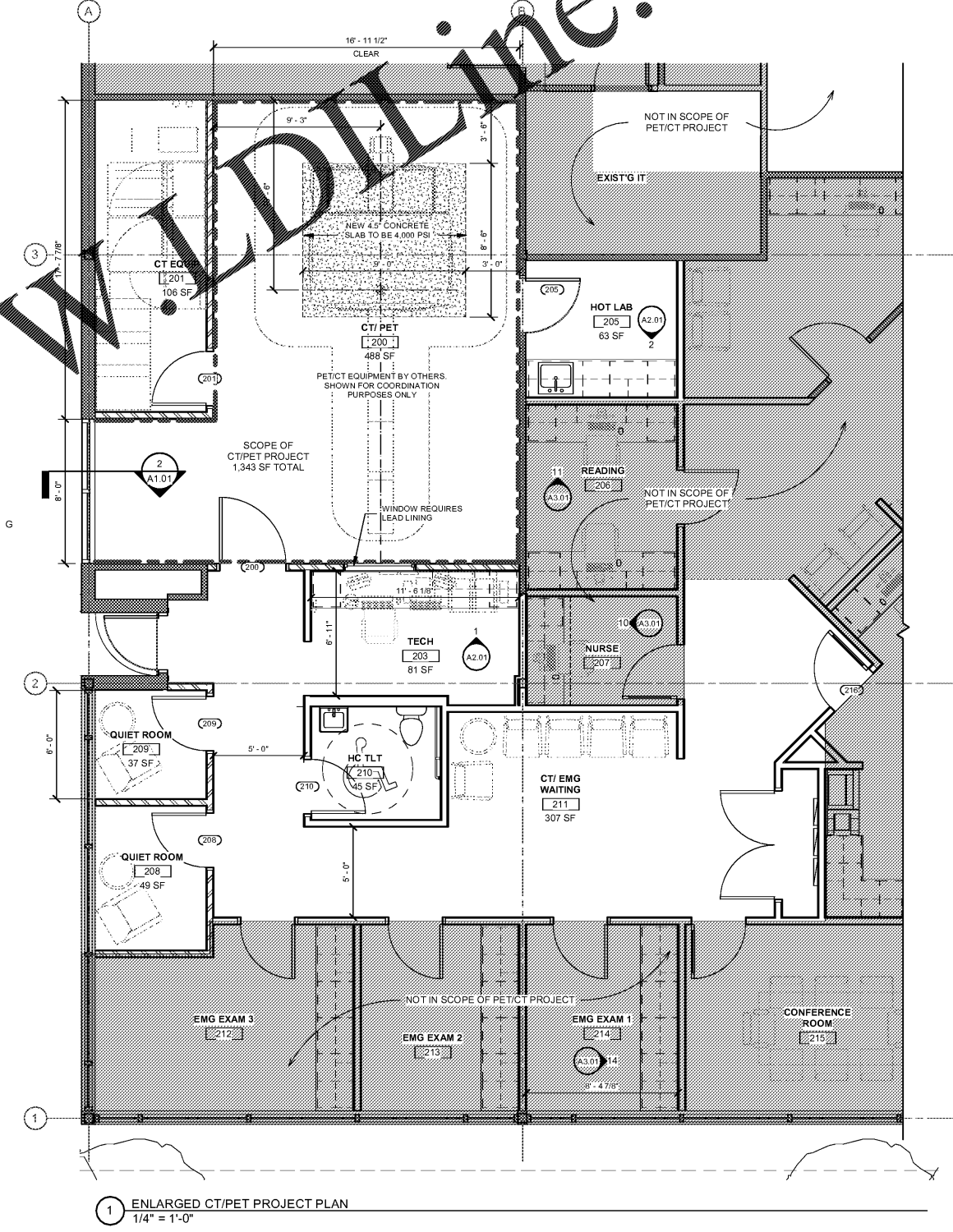
X-RAY NOTES			
1.	ANY INFORMATION INCLUDED IN THE ARCHITECTS DRAWINGS RELATED TO LEAD SHIELDING AND X-RAY REQUIREMENTS ARE PROVIDED FOR INFORMATION AND COORDINATION PURPOSES ONLY. REFER TO ORIGINAL DOCUMENTS FOR CONSTRUCTION REQUIREMENTS. THE ARCHITECT IS NOT RESPONSIBLE FOR REQUIREMENTS ASSOCIATED SHIELDING AND X-RAY EQUIPMENT.		
2.	ALL X-RAY EQUIPMENT TO BE SPECIFIED, FURNISHED, AND INSTALLED BY VENDOR.		
3.	CONTRACTOR TO COORDINATE ALL POWER AND DATA NEEDS WITH VENDOR.		
4.	CONTRACTOR TO SUPPLY AND INSTALL LEAD LINING AS SPECIFIED BY PHYSICIST.		

SPECIALITY EQUIPMENT LEGEND			
LABEL	EQUIPMENT SPEC	MFR	COMMENTS
CT/PET	BIOGRAPH 16	SIEMENS	EXISTING EQUIPMENT TO BE RELOCATED BY MIS

GENERAL PLAN NOTES:
1. FURNITURE IS NOT INCLUDED IN CONTRACT
2. DIMENSIONS TO FACE OF STUDY AS NOTED OTHERWISE



2 RCP- PET/ CT PROJECT
1/4" = 1'-0"



1 ENLARGED CT/PET PROJECT PLAN
1/4" = 1'-0"