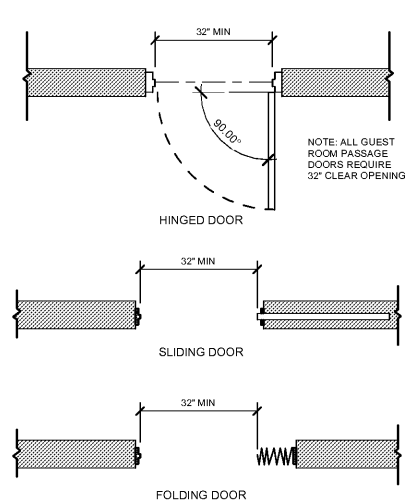


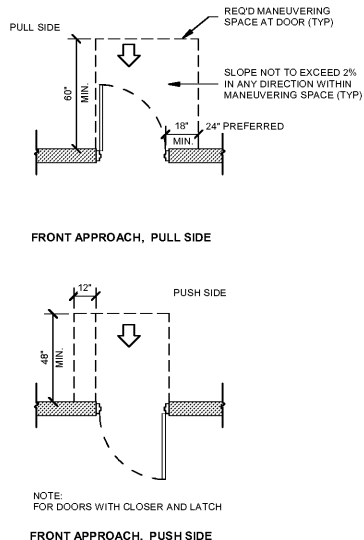
NOTES:
 1. CHARACTERS SHALL BE 48" MIN AND 60" MAX ABOVE THE FINISH FLOOR MEASURED TO THE BASELINE OF THE CHARACTERS.
 2. WHERE A SIGN CONTAINING TACTILE CHARACTERS IS PROVIDED AT A DOOR, THE SIGN SHALL BE ALONGSIDE THE DOOR ON THE LATCH SIDE. WHERE A TACTILE SIGN IS PROVIDED AT DOUBLE DOORS, THE SIGN SHALL BE TO THE RIGHT OF THE RIGHT-HAND DOOR. WHERE THERE IS NO WALL SPACE ON THE LATCH SIDE OF A SINGLE DOOR OR TO THE RIGHT SIDE OF A DOUBLE DOOR, SIGNS SHALL BE ON THE NEAREST ADJACENT WALL. SIGNS CONTAINING TACTILE CHARACTERS SHALL HAVE AN 18" MIN X 18" MIN SPACE ON THE FLOOR, CENTERED ON THE SIGN, BEYOND THE ARC OF ANY DOOR SWING BETWEEN THE CLOSED POSITION AND 45 DEGREE OPEN POSITION.
 3. DOOR-MOUNTED SIGNS SHALL BE PERMITTED ON THE PUSH SIDE OF DOORS WITH CLOSERS AND WITHOUT HOLD-OPEN DEVICES.
 4. REFER TO SECTION 703 OF THE 2010 ADA STANDARDS FOR REQUIREMENTS OF TACTILE CHARACTERS, VISUAL CHARACTERS, AND PICTOGRAMS.

1 ACCESSIBLE ROOM IDENTIFICATION SIGNAGE DETAIL
1/4" = 1'-0"



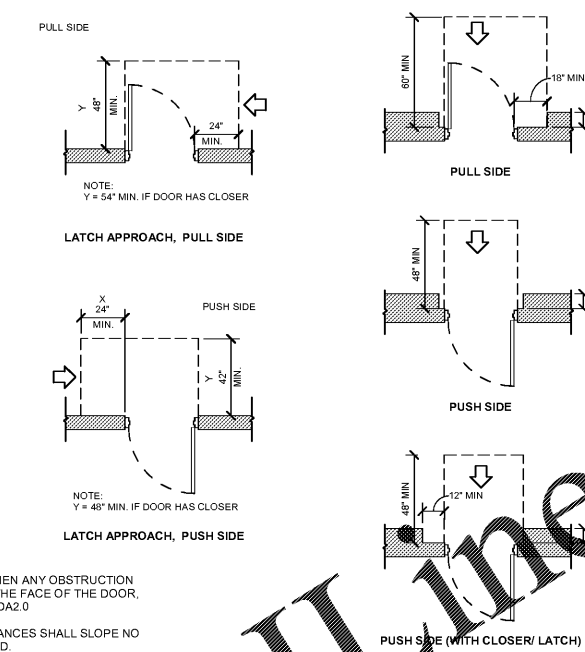
NOTE:
 1. OPENINGS MORE THAN 24" DEEP SHALL PROVIDE A CLEAR OPENING OF 36" MIN.
 2. THERE SHALL BE NO PROJECTIONS INTO THE REQUIRED CLEAR OPENING WIDTH LOWER THAN 34" ABOVE THE FINISH FLOOR OR GROUND. PROJECTIONS INTO THE CLEAR OPENING WIDTH BETWEEN 34" AND 80" ABOVE THE FINISH FLOOR OR GROUND SHALL NOT EXCEED 4".

2 CLEAR OPENING AT ACCESSIBLE DOORS/GATES
1/2" = 1'-0"

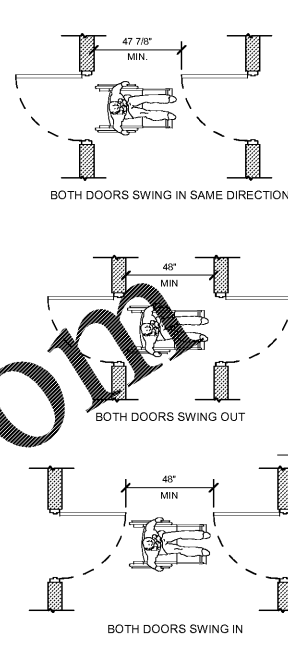


NOTES:
 1. MANEUVERING CLEARANCES FOR FORWARD APPROACH SHALL BE PROVIDED WHEN ANY OBSTRUCTION WITHIN 18" OF THE LATCH SIDE OF A DOORWAY PROJECTS MORE THAN 8" BEYOND THE FACE OF THE DOOR, MEASURED PERPENDICULAR TO THE FACE OF THE DOOR OR GATE. SEE DETAIL 4ADA2.0
 2. THE FLOOR OR GROUND SURFACE WITHIN THE REQUIRED MANEUVERING CLEARANCES SHALL SLOPE NO MORE THAN 1:48 (2%) AND CHANGES IN LEVEL WITHIN THE AREA ARE NOT PERMITTED.

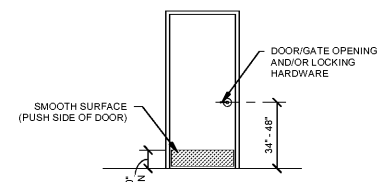
3 REQUIRED DOOR MANEUVERING CLEARANCES AT ACCESSIBLE DOORS/GATES



4 MANEUVERING CLEARANCES AT RECESSED DOORS
1/4" = 1'-0"

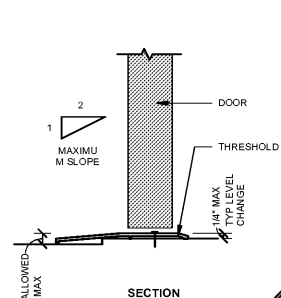


5 DOORS IN A SERIES
1/4" = 1'-0"

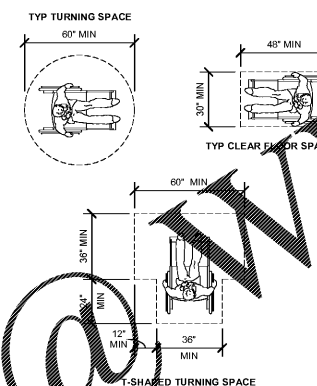


NOTES:
 1. HANDLES, PULLS, LATCHES, LOCKS, AND OTHER OPERABLE PARTS ON ACCESSIBLE DOORS SHALL HAVE A SHAPE THAT IS EASY TO TRIP WITH ONE HAND AND DOES NOT REQUIRE TIGHT GRASPING, PINCHING, OR TWISTING OF THE WRIST TO OPERATE. SUCH HARDWARE SHALL BE 34" MIN AND 48" MAX ABOVE FINISH FLOOR. WHERE SLIDING DOORS ARE IN THE FULLY OPEN POSITION, OPERATING HARDWARE SHALL BE EXPOSED AND USABLE FROM BOTH SIDES.
 2. DOOR CLOSERS SHALL BE ADJUSTED SO THAT FROM AN OPEN POSITION OF 90 DEGREES, THE TIME REQUIRED TO MOVE THE DOOR TO AN OPEN POSITION OF 12 DEGREES SHALL BE 5 SECONDS MIN.
 3. DOOR SPRING HINGES SHALL BE ADJUSTED SO THAT FROM THE OPEN POSITION OF 70 DEGREES, THE DOOR SHALL MOVE TO THE CLOSED POSITION IN 1.5 SECONDS MIN MEASURED UNDER AMBIENT CONDITIONS.
 4. FIRE DOORS SHALL HAVE THE MINIMUM OPENING FORCE ALLOWED BY THE APPROPRIATE ADMINISTRATIVE AUTHORITY. FOR MAXIMUM FORCE FOR PUSHING OPEN OR PULLING OPEN DOORS OTHER THAN FIRE DOORS SHALL BE AS FOLLOWS:
 1) INTERIOR HINGED DOOR: 5.0 POUNDS
 2) SLIDING OR FOLDING DOORS: 5.0 POUNDS
 THESE FORCES DO NOT APPLY TO THE FORCE REQUIRED TO RETRACT BOLTS OR DISENGAGE OTHER DEVICES THAT HOLD THE DOOR IN A CLOSED POSITION.
 5. DOOR SURFACES WITHIN 10" OF THE FLOOR OR GROUND MEASURED VERTICALLY SHALL BE A SMOOTH SURFACE ON THE PUSH SIDE EXTENDING THE FULL WIDTH OF THE DOOR. PARTS CREATING HORIZONTAL OR VERTICAL JOINTS IN SUCH SURFACE SHALL BE WITHIN 1/16" OF THE SAME PLANE AS THE OTHER. CAVITIES CREATED BY ADDED KICK PLATES SHALL BE CAPPED.

6 ACCESSIBLE DOOR & GATE HARDWARE DETAIL
1/4" = 1'-0"

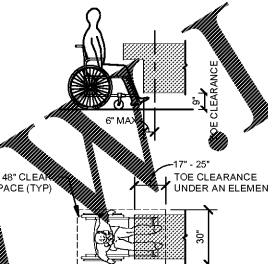


7 ACCESSIBLE DOOR THRESHOLD DETAIL

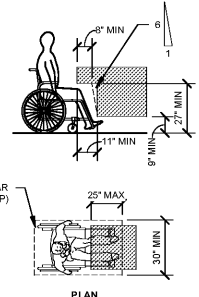


NOTES:
 1. THE FLOOR OR GROUND SPACE WITHIN THE REQUIRED MANEUVERING CLEARANCES OR CLEAR FLOOR SPACE SHALL SLOPE NO MORE THAN 1:48 (2%) AND CHANGES IN LEVEL WITHIN THIS AREA ARE NOT PERMITTED.
 2. WHERE TURNING SPACE IS REQUIRED, THE CIRCLE OR THE T-SHAPED SPACE MAY BE USED.

8 CLEAR FLOOR AND TURNING SPACE
1/4" = 1'-0"

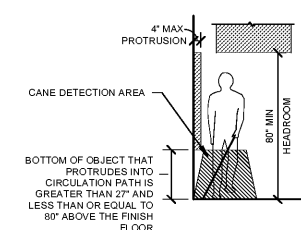


9 TOE CLEARANCE DETAIL
1/4" = 1'-0"



10 KNEE CLEARANCE DETAIL
1/4" = 1'-0"

NOTES:
 1. SPACE UNDER AN ELEMENT BETWEEN 9" AND 27" ABOVE THE FINISH FLOOR SHALL BE CONSIDERED KNEE CLEARANCE.
 2. KNEE CLEARANCE SHALL EXTEND 25" MAX UNDER AN ELEMENT AT 9" ABOVE THE FINISH FLOOR.
 3. WHERE KNEE CLEARANCE IS REQUIRED UNDER AN ELEMENT AS PART OF THE CLEAR FLOOR SPACE, THE KNEE CLEARANCE SHALL BE 11" DEEP MIN AT 9" ABOVE THE FLOOR AND 9" DEEP MIN AT 27" ABOVE THE FINISH FLOOR.
 4. BETWEEN 9" AND 27" ABOVE THE FINISH FLOOR, THE KNEE CLEARANCE SHALL BE PERMITTED TO REDUCE AT A RATE OF 1" IN DEPTH FOR EVERY 9" IN HEIGHT.

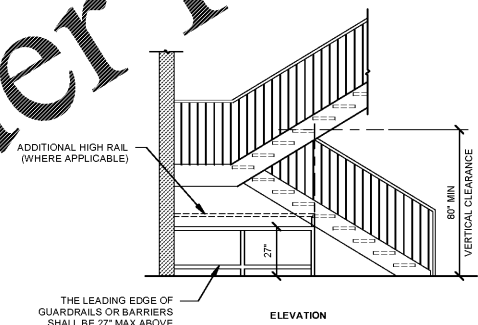


11 PROTRUDING OBJECTS DETAIL
1/4" = 1'-0"

NOTE: PROTRUDING OBJECTS SHALL NOT REDUCE THE CLEAR WIDTH FOR ACCESSIBLE ROUTES.
 WHERE AN OBJECT IS MOUNTED BETWEEN TWO POSTS AND THE CLEAR DISTANCE BETWEEN POSTS IS GREATER THAN 12", THE LOWEST EDGE OF THE SIGN OR OBSTRUCTION SHALL BE 27" MAX OR 80" MIN ABOVE THE FINISH FLOOR.
 WHERE THE BOTTOM OF POST-MOUNTED OBJECT IS LOCATED BETWEEN 27" AND 80" ABOVE FINISH FLOOR, IT MAY PROTRUDE 12" MAX INTO THE CIRCULATION PATH.

12 POST MOUNTED PROTRUDING OBJECTS DETAIL
1/4" = 1'-0"

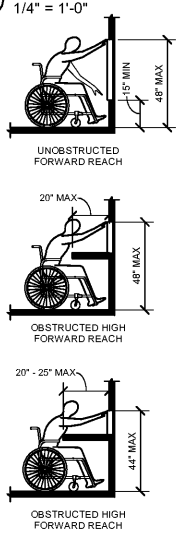
Order Plans



13 VERTICAL CLEARANCE DETAIL
1/4" = 1'-0"

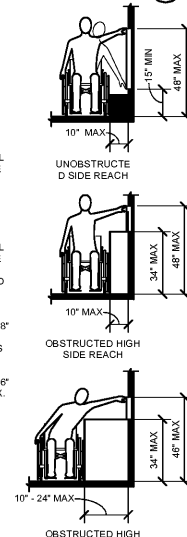
NOTES:
 1. WHERE A FORWARD REACH IS UNOBSTRUCTED, THE HIGH FORWARD REACH SHALL BE 48" MAX AND THE LOW FORWARD REACH SHALL BE 15" MIN ABOVE THE FINISH FLOOR OR GROUND.
 2. WHERE A HIGH FORWARD REACH IS OVER AN OBSTRUCTION, THE CLEAR FLOOR SPACE SHALL EXTEND BENEATH THE ELEMENT FOR A DISTANCE NOT LESS THAN THE REQUIRED REACH DEPTH OVER THE OBSTRUCTION.
 3. THE HIGH FORWARD REACH SHALL BE 48" MAX WHERE THE REACH DEPTH IS 20".
 4. WHERE THE REACH DEPTH EXCEEDS 20" THE HIGH FORWARD REACH SHALL BE 44" MAX AND THE REACH DEPTH SHALL BE 25" MAX.

14 FORWARD REACH DETAIL



15 SIDE REACH DETAIL

NOTES:
 1. WHERE A CLEAR FLOOR OR GROUND SPACE ALLOWS A PARALLEL APPROACH TO AN ELEMENT AND THE SIDE REACH IS UNOBSTRUCTED, THE HIGH SIDE REACH SHALL BE 48" MAX AND THE LOW SIDE REACH SHALL BE 15" MIN.
 2. WHERE A CLEAR FLOOR OR GROUND SPACE ALLOWS A PARALLEL APPROACH TO AN ELEMENT AND THE HIGH SIDE REACH IS OVER AN OBSTRUCTION, THE CLEARANCE SHALL BE 24" MAX AND THE DEPTH OF THE OBSTRUCTION SHALL BE 24" MAX.
 3. THE HIGH SIDE REACH SHALL BE 48" FOR A REACH DEPTH OF 10" MAX. WHERE THE REACH RANGE EXCEEDS 10".
 4. THE HIGH SIDE REACH SHALL BE 48" MAX FOR A REACH DEPTH OF 24" MAX.



16 MIN CLEAR WIDTH FOR WHEELCHAIRS
1/4" = 1'-0"



EXPIRATION DATE:
 COPYRIGHT NOTICE
 THE DRAWINGS ARE THE PROPERTY OF RIVER STREET ARCHITECTURE LLC. ANY USE, REUSE, REPRODUCTION, DISPLAY OR SALE OF THESE DRAWINGS WITHOUT THE EXPRESS WRITTEN CONSENT OF THE ARCHITECT IS STRICTLY PROHIBITED.

river street
 ARCHITECTURE
 123 E 7th street, suite 400 chattanooga, tennessee 37402
 P-423 634 0806 www.riverstreetarchitecture.com

PRIMEIMAGING
 RENOVATION + PET/CT PROJECT
 CHATTANOOGA OUTPATIENT CENTER
 1301 MCCALLIE AVE., CHATTANOOGA TN 37404

Revision Schedule		
Rev. #	Rev. Date	Revision Description

Release Date: 05.03.2019
 Project No.: 19010
 GENERAL ACCESSIBILITY DETAILS
ADA2.0