

EXTERIOR LIGHT FIXTURE SCHEDULE

ALL ITEMS LISTED ON THE "LIGHT FIXTURE SCHEDULE" WILL BE SUPPLIED BY THE OWNER (O'REILLY). ITEMS SHALL BE DIRECT ORDERED AND OR RELEASED FROM THE LISTED ELECTRICAL EQUIPMENT DISTRIBUTOR.

GRAYBAR ELECTRIC CO. INC.
11885 LACKLAND ROAD
ST. LOUIS, MO 63148

GRAYBAR O'REILLY TEAM
EMAIL: oreilly@graybar.com
TOLL FREE: (314) 573-2080

MARK	MFR.	CATALOG NUMBER	SUPPLY VOLTAGE	FINISH	MOUNTING		LAMPS		WATTAGE	NOTES	FITTURE QUANTITY
					SURFACE WALL	OTHER	FLUORESCENT	LED			
LED POLE LIGHTS											
P1	LSI	MRM-LED-18L-SL-FT-UNV-DM-50-80CRI-BRZ-IL	120	DARK BRONZE		X	X		154	ADVANCE BALLASTS, FULL CUT-OFF, NO SUBSTITUTIONS. ANCHOR BOLTS W/HARDWARE & TEMPLATE, WITH INTERNAL LOUVER HOUSE SIDE SHIELD, BUG RATING B2-U0-G3	4
W01	LSI	XWM-FT-LED-08L-50-UE-BRZ NO SUBSTITUTIONS	120	DARK BRONZE	X		X		59	FULL CUT-OFF, BUG RATING B1-U0-G1. ARCHITECTURAL ELEVATIONS SHOW DIMENSIONED LOCATIONS.	3

FITTURE QUANTITY TO BE VERIFIED WITH SITE PLAN QUANTITY

AUTOMATIC LIGHTING CONTROL

COMPLIANCE WITH ENERGY CODE IS ACHIEVED BY:

- ONCE THE EMS HAS BEEN PROGRAMMED, THE INTERIOR AND EXTERIOR LIGHTS WILL TURN ON AND OFF USING THE FOLLOWING LOGIC: SEE EM SHEETS.
 - INTERIOR WORK LIGHTS WILL TURN ON WITH FIRST MOTION IN THE STORE AND WILL TURN OFF 15 MINUTES AFTER LAST MOTION ONCE THE STORE IS CLOSED.
 - INTERIOR SALES LIGHTS WILL TURN ON AT STORE OPENING AND TURN OFF 15 MINUTES AFTER STORE CLOSING.
 - EXTERIOR SIGN LIGHTS WILL TURN ON WHEN IT IS DARK ENOUGH OUTSIDE ANYTIME DURING STORE HOURS, AND WILL TURN OFF AT STORE CLOSING.
 - EXTERIOR SITE LIGHTS WILL TURN ON WHEN IT IS DARK ENOUGH OUTSIDE AND IT IS WITHIN STORE HOURS OR THERE IS MOTION IN THE STORE. THEY WILL TURN OFF 30 MINUTES AFTER LAST MOTION ONCE THE STORE IS CLOSED.
- RESTROOMS AND OFFICES: ALL LIGHTING IN THESE AREAS ARE CONTROLLED BY OCCUPANT-SENSING DEVICES.

Statistics

Description	Symbol	Avg	Max	Min	Max/Min	Avg/Min	Avg/Max
Parking	+	1.1 fc	4.5 fc	0.00 fc	N/A	N/A	N/A

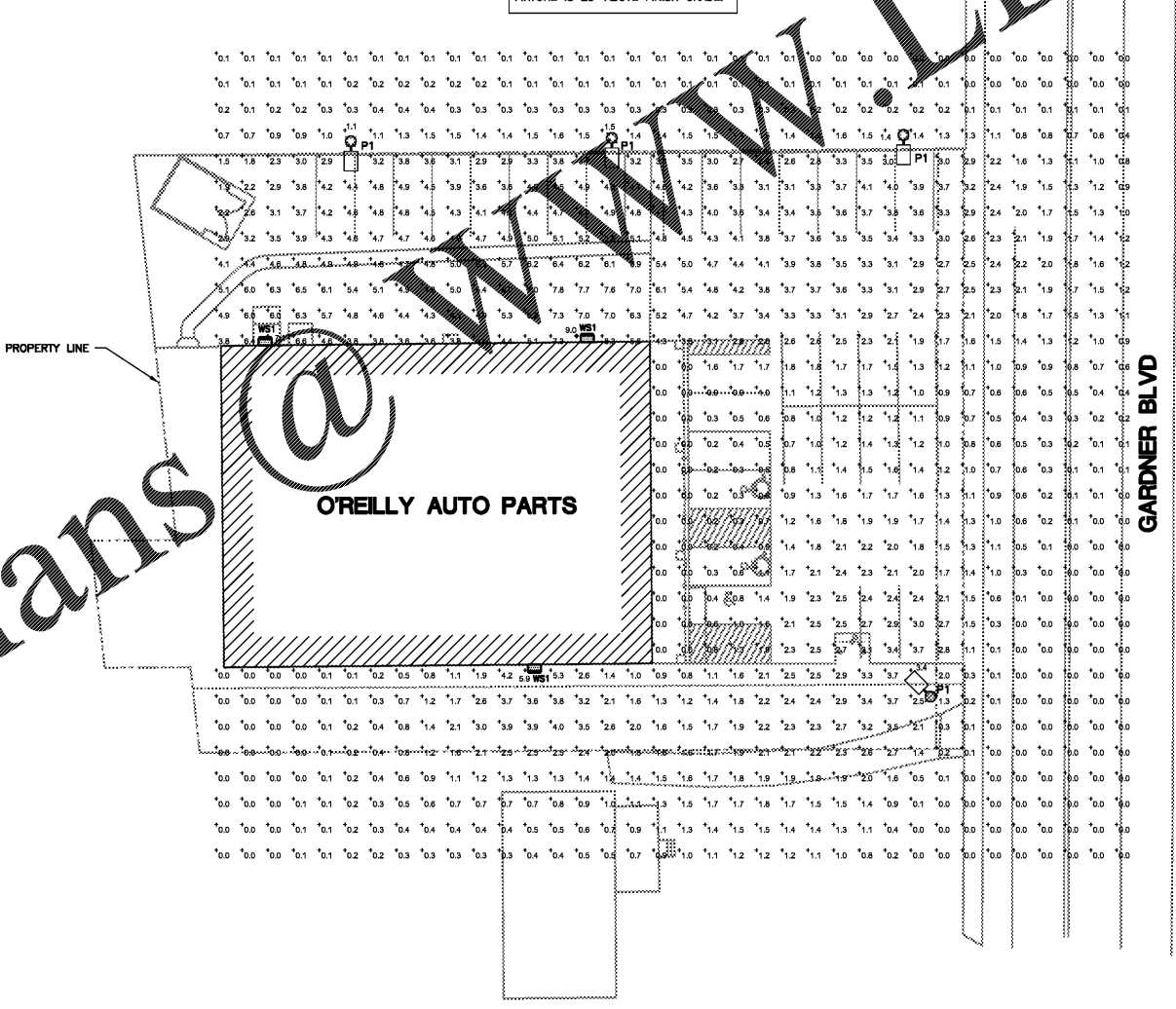
BACKLIGHT-UPLIGHT-GLARE (BUG) RATING / FULL CUTOFF

SEE CUT-SHEET BELOW OF EXTERIOR LIGHT FIXTURES. ALL OF THE LSI XALM & XWM LED FIXTURES HAVE ZERO UPLIGHT AND ARE CONSIDERED "FULL CUT OFF" AND DARKSKY COMPLIANT. BELOW ARE THE "BUG" RATINGS, AS TESTED TO IDENTIFY HOW MUCH OF THE LIGHT GOES BACKWARDS, UPWARDS AND TO THE GROUND. THE CHART BELOW SHOWS THAT THESE FIXTURES HAVE BUG RATINGS WITH (UPLIGHT) U = 0.

Fixture	Fixture Lumens	Fixture Watts	Lumens/Watt	B/C Class	Light Class	BUG Rating
XALM-3-LED-05-20-RL	15,847	154	102	Type III	Short	B1-U0-G3
XALM-5W-LED-05-20-RL	11,251	154	73	Type III	Short	B2-U0-G3
XALM-F-LED-05-20-RL	15,847	154	102	Type III	Short	B2-U0-G3
XWM-3-LED-08-30	6,571	54	122	Type III	Medium	B1-U0-G2
XWM-F-LED-08-30	6,571	54	121	Type IV	Short	B1-U0-G2

SPECIAL NOTE:
ASSUMED FIXTURE HEIGHT OF P1 FIXTURE IS 25' ABOVE FINISH GRADE.

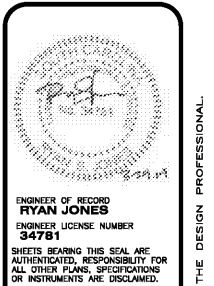
Order Plans @ www.LDILine.com



SITE LIGHTING PHOTOMETRICS

SCALE: 1"=20'

N
↑



CJD
Engineering | Energy | Innovation
2225 West Chesapeake Boulevard, Suite 200, Springfield, MO 65807
P: 417.877.1700
www.cjd-eng.com

PROJECT:
O'REILLY AUTO PARTS REMODEL
628 GARDNER BLVD
HOLLY HILL, SC 29059

SITE PHOTOMETRICS PLAN

O'Reilly AUTO PARTS
CORPORATE OFFICES
233 SOUTH PATTERSON
SPRINGFIELD, MISSOURI 65802
(417) 862-2674 TELEPHONE

DRAWN BY: JBR
CHECKED BY: CRF
DATE: 03/29/2019
REVISION:
PROJECT NUMBER: 19035-HHL
SHEET NUMBER: SP1

© COPYRIGHT 2019 - DESIGNS, DRAWINGS AND SPECIFICATIONS ARE INSTRUMENTS OF SERVICE AND ARE THE PROPERTY OF THE DESIGN PROFESSIONAL. REPRODUCTION PROHIBITED WITHOUT THE EXPRESSED WRITTEN CONSENT OF THE DESIGN PROFESSIONAL.