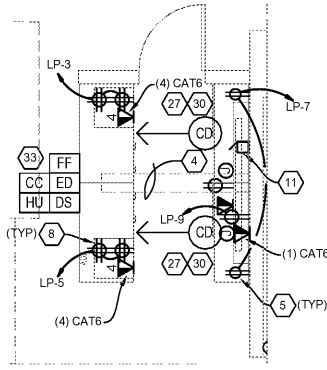


A ENLARGED OFFICE PLAN
1/4"=1'-0"



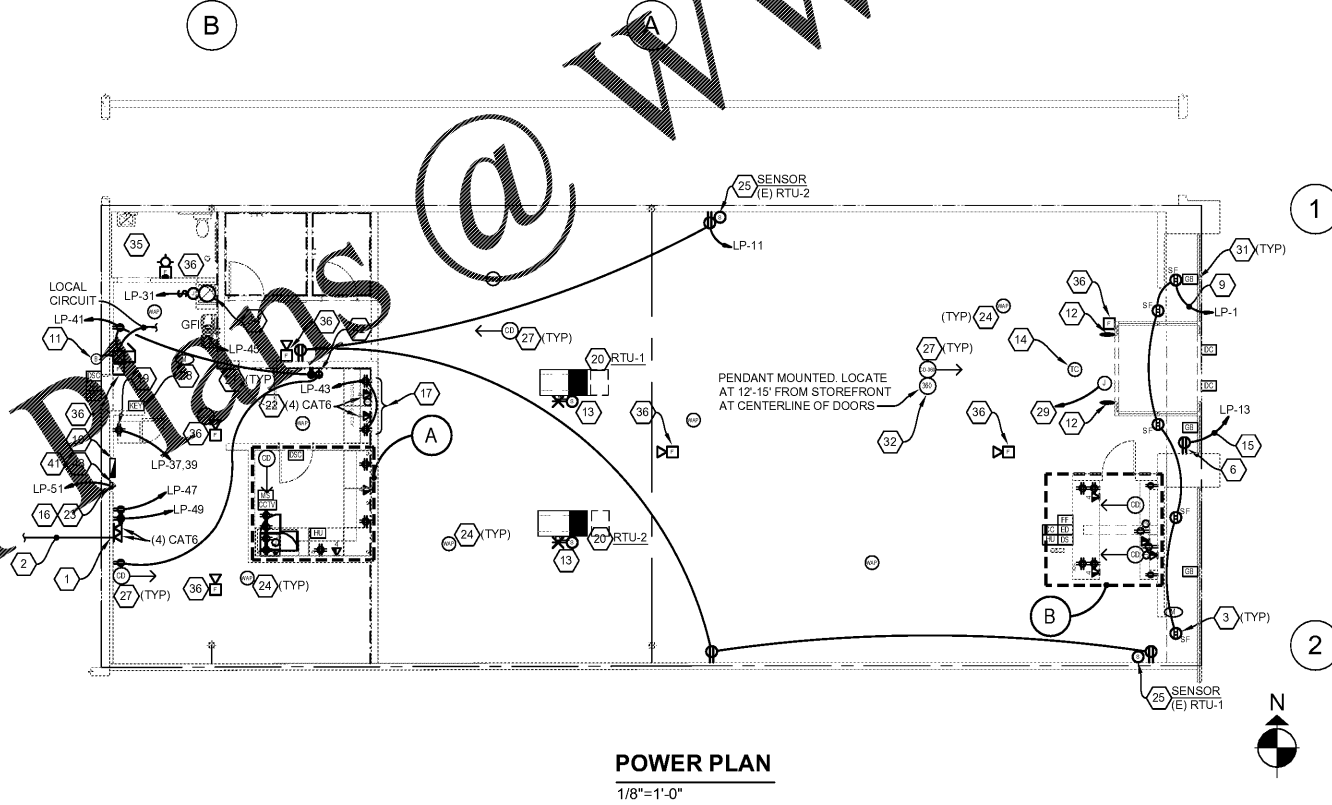
B ENLARGED CASHWRAP PLAN
1/4"=1'-0"

DETAIL IS DIAGRAMMATIC TO SHOW PLACEMENT OF CAMERAS. REFER TO FLOOR PLAN FOR ACTUAL CASHWRAP CONFIGURATION.

PROVIDE A SPARE CAT6 CABLE TO EACH CASH REGISTER

ELECTRICAL DEVICE LEGEND		SECURITY DEVICE LEGEND	
ALL SYMBOLS DO NOT NECESSARILY APPLY		ALL SYMBOLS DO NOT NECESSARILY APPLY	
SYMBOL	DESCRIPTION	SYMBOL	DESCRIPTION
(Symbol)	WIRED JUNCTION BOX	(Symbol)	KEYPAD
(Symbol)	DUPLEX RECEPTACLE, 3 WIRE GRD. TYPE, 20A	(Symbol)	DOOR CONTACT
(Symbol)	DUPLEX RECEPTACLE, WEATHERPROOF, 20A	(Symbol)	MOTION DETECTOR 360
(Symbol)	GROUND FAULT PROTECTED DUPLEX RECEPTACLE, 20A	(Symbol)	HOLDUP BUTTON
(Symbol)	QUADRAPLEX WALL RECEPTACLE, 20A	(Symbol)	MOTION DETECTOR
(Symbol)	ISOLATED GROUND RECEPTACLE, 20A	(Symbol)	GLASS BREAK
(Symbol)	SEE DRAWINGS	(Symbol)	CAMERA (DOME)
(Symbol)	USB RECEPTACLE, 20A	(Symbol)	360° CAMERA
(Symbol)	FLOOR MOUNTED QUAD RECEPTACLE, 20A	(Symbol)	EAS SYSTEM
(Symbol)	SEE DRAWINGS	(Symbol)	PILFER GUARD
(Symbol)	PUSHBUTTON STATION	(Symbol)	DROP SAFE
(Symbol)	LOW VOLTAGE BUZZER TRANSFORMER	(Symbol)	DOOR SCOPE
(Symbol)	AS REQUIRED	(Symbol)	ELECTRIC DETECTOR
(Symbol)	DOOR BUZZER	(Symbol)	SECURITY VIDEO HEAD END
(Symbol)	54"	(Symbol)	FRAUDTIGHTER
(Symbol)	TOGGLE SWITCH - SINGLE, 3-WAY & 4-WAY	(Symbol)	CREDIT CARD READER AND PIN PAD
(Symbol)	48"	LOW VOLTAGE DEVICE LEGEND	
(Symbol)	SWITCHED CIRCUIT	ALL SYMBOLS DO NOT NECESSARILY APPLY	
(Symbol)	UNSWITCHED CIRCUIT	(Symbol)	ROUGH-IN FOR HVAC THERMOSTAT
(Symbol)	18"	(Symbol)	ROUGH-IN FOR HVAC REMOTE SENSOR
(Symbol)	MANUAL MOTOR STARTING SWITCH W/ PILOT LIGHT	(Symbol)	WIRELESS ACCESS POINT
(Symbol)	18"		
(Symbol)	COMBINATION TELEPHONE / DATA OUTLET - DUPLEX		
(Symbol)	COMBINATION TELEPHONE / DATA OUTLET - QUAD		
(Symbol)	SAFETY SWITCH		
(Symbol)	AS REQUIRED		
(Symbol)	COMBINATION STARTER/SAFETY SWITCH		
(Symbol)	AS REQUIRED		
(Symbol)	MOTOR OUTLET - 1 PHASE		
(Symbol)	AS REQUIRED		
(Symbol)	MOTOR OUTLET - 3 PHASE		
(Symbol)	AS REQUIRED		
(Symbol)	FIRE ALARM HORN/STROBE SIGNAL DEVICE		
(Symbol)	80"		
(Symbol)	FIRE ALARM STROBE SIGNAL DEVICE		
(Symbol)	90"		
(Symbol)	DUCT MTD. SYSTEM SMOKE DETECTOR W/ REMOTE INDICATORS		
(Symbol)	AS REQUIRED		
(Symbol)	FIRE ALARM PULL STATION		
(Symbol)	48"		
(Symbol)	SYSTEM SMOKE DETECTOR		
(Symbol)	CEILING MTD.		
(Symbol)	FIRE ALARM BOOSTER BOX		
(Symbol)	DUPLEX RECEPTACLE, 3 WIRE GRD. TYPE, 20A		
(Symbol)	CEILING MTD.		
NOTE: IN UNCLIPPED AREAS, THE RECEPTACLES AND TELEPHONE OUTLETS SHALL BE MOUNTED AT 24" A.F.F.; THE TOGGLE SWITCHES, THERMOSTATS AND MANUAL MOTOR STARTERS SHALL BE MOUNTED AT 42" A.F.F.			

SEE E111 FOR CODED AND GENERAL NOTES



POWER PLAN
1/8"=1'-0"

FIELD VERIFY ALL CONDITIONS

DESIGN DRAWINGS ARE SCHEMATIC. THIS CONTRACTOR SHALL VISIT THE SITE PRIOR TO BIDDING OR AWARD OF CONTRACT TO INSPECT EXISTING FIELD CONDITIONS. THIS CONTRACT SHALL INCLUDE ALL LABOR AND MATERIALS NECESSARY FOR FIELD MODIFICATIONS DUE TO EXISTING CONDITIONS.

THE CONTRACTOR SHALL CONTACT THE ARCHITECT, ENGINEER OR OWNER PRIOR TO BIDDING FOR INTERPRETATIONS AND CLARIFICATIONS OF THE DESIGN AND INCLUDE IN HIS BID ALL COSTS TO MEET THE DESIGN INTENT. CLARIFICATIONS MADE BY THE ARCHITECT, ENGINEER OR OWNER AFTER BIDDING WILL BE FINAL AND SHALL BE IMPLEMENTED AT CONTRACTORS COST.

BIDDING CONTRACTORS SHALL HAVE A WORKING KNOWLEDGE OF LOCAL CODES AND ORDINANCES AND SHALL INCLUDE IN THEIR BIDS THE COSTS FOR ALL WORK INSTALLED IN STRICT ACCORDANCE WITH GOVERNING CODES. THE PLANS AND SPECIFICATIONS NOT WITHSTANDING, THE CONTRACTOR SHALL ALERT ARCHITECT, ENGINEER OR OWNER OF ANY APPARENT DISCREPANCIES BETWEEN GOVERNING CODES AND DESIGN INTENT.