

DOOR SCHEDULE

LOCATION	DOOR NO. (A110)	DOOR SIZE	DOOR			FRAME		HARDWARE GROUP	REMARKS	
			THICKNESS	TYPE	MATERIAL	FINISH	MATERIAL			FINISH
MAIN FRONT ENTRY DOORS	101 EX	EXISTING V.I.F.	EXISTING	A	GLASS	EXISTING		6	(B)(C)(E)	
MAIN FRONT ENTRY DOORS-VESTIBULE	102 EX	EXISTING V.I.F.	EXISTING	A	GLASS	EXISTING		6	(B)(C)(E)	
ACCESSIBLE TEAM ROOM	104A T	3'-2" x 5'-0"	1-3/4"	G	WOOD	P-1	H.M.	P-1	1	
TEAM ROOM	104B T	3'-2" x 5'-0"	1-3/4"	G	WOOD	P-1	H.M.	P-1	1	
INTERIOR SALES-STOCK DOOR	105 T	3'-4" x 7'-0"	1-3/4"	F	H.M.	P-1	H.M.	P-1	3	
MANAGER'S OFFICE DOOR	106 T	3'-0" x 7'-0"	1-3/4"	D	H.M.	P-1	H.M.	P-1	2	(E)(F)
EXTERIOR SERVICE DOOR	105 EX	EXISTING V.I.F.	EXISTING	E	EXISTING				4	(A)(B)(C)(D)(E)(F)
EXISTING RESTROOM DOOR	107 EX	3'-0" x 7'-0" V.I.F.	EXISTING	B	EXISTING	P-1	EXISTING	P-1	5	(B)(C)

REMARKS

- A. INSTALL NEW PANIC HARDWARE.
- B. FURNISH & INSTALL SPECIFIED HARDWARE GROUP TO ALL EXISTING DOORS U.N.O.
- C. GENERAL CONTRACTOR TO VERIFY PROPER FUNCTIONING, LATCHING, LOCKING, AND SEALING (WHERE APPLICABLE) OF ALL EXISTING PERSONNEL AND ROLL-UP DOORS. GENERAL CONTRACTOR IS TO SERVICE/REPAIR ANY DOORS NOT IN PROPER OPERATING CONDITION.
- D. PROVIDE RODENT BLOCKING SWEEP ON BOTTOM EDGE OF DOOR.
- E. CONSTRUCTION CORE LOCKSETS, PURCHASED THROUGH REQUIRED OWNER'S VENDOR AND INSTALLED BY THE GC. FINAL LOCKSET CORES TO BE SUPPLIED & INSTALLED BY OWNER. EXISTING CORES & CYLINDERS TO REMAIN FOR MODELS ONLY.
- F. INSTALL NEW, OR CONFIRM EXISTING DOOR SCOPES. REPAIR / REPLACE EXISTING AS REQUIRED.

DOOR NOTES

1. ALL EGRESS DOORS SHALL BE READILY OPENABLE FROM THE EGRESS SIDE WITHOUT THE USE OF A KEY OR SPECIAL KNOWLEDGE OR EFFORT OR WITHOUT REQUIRING THE ABILITY TO GRASP THE OPENING HARDWARE.
2. ANY DOOR THAT IS PART OF THE EXIT SYSTEM IS TO BE PROVIDED WITH A PERMANENT, VISIBLE, DURABLE SIGN ON ITS HEADER FRAME STATING "THIS DOOR TO REMAIN UNLOCKED WHENEVER THIS BUILDING IS OCCUPIED".
3. EXIT DOORS SHALL BE OPENABLE FROM INSIDE WITHOUT THE USE OF A KEY OR ANY SPECIAL KNOWLEDGE OR EFFORT OR WITHOUT REQUIRING THE ABILITY TO GRASP THE OPENING HARDWARE.
4. ALL ACCESSIBLE ENTRANCES SHALL BE IDENTIFIED WITH A MINIMUM OF ONE INTERNATIONAL SYMBOL OF ACCESSIBILITY, TO BE VISIBLE TO PERSONS ALONG APPROACHING CIRCULATION PATHS.

DOOR HARDWARE SCHEDULE

GROUP 1: FITTING ROOMS					
QTY.	ITEM	DESCRIPTION	FINISH	MFR.	(E) locks to be changed
3 EACH	HINGES	4 1/2"X4 1/2", 2060R, SPRING HINGE	26D	STANLEY	
1 EACH	LEVER	GRADE 1 STOREROOM (NON I CORE)	26D		
1 EACH	STOP	WALL BUMPER 411 R-W	32D	IVES	
3 EACH	STOP	HINGE PIN DOOR STOP #70 - B19/622 1" HINGE PIN DOOR STOP TOTAL OF 3 PER CODE)	FBF	IVES	

GROUP 2: MANAGER'S OFFICE					
QTY.	ITEM	DESCRIPTION	FINISH	MFR.	(E) locks to be changed
3 EACH	HINGES	4 1/2"X4 1/2", 2060	26D	STANLEY	
1 EACH	LEVER	GRADE 1 STOREROOM (NON I CORE)	26D	*CAL ROYAL	
1 EACH	CLOSER	MODEL 4041	AL	LCN	
2 EACH	SCOPE	DOOR SCOPES	AL S		
1 EACH	STOP	WALL BUMPER 411	32D	IVES	

GROUP 3: STOCK ROOM					
QTY.	ITEM	DESCRIPTION	FINISH	MFR.	(E) locks to be changed
3 EACH	HINGES	4 1/2"X4 1/2", 2060,	26D	STANLEY	
1 EACH	LEVER	PASSAGE TYPE	26D		
1 EACH	CLOSER	MODEL 4041	AL	LCN	
1 EACH	STOP	WALL BUMPER 411 R-W	32D	IVES	

GROUP 4: EMERGENCY EXIT / RECEIVING DOOR-BY LL					
QTY.	ITEM	DESCRIPTION	FINISH	MFR.	(E) locks to be changed
3 EACH	HINGES	4 1/2"X4 1/2", FBB179 26D NRP	26D	STANLEY	
1 EACH	EXIT DEVICE	1250 RIM PANIC BAR WITH NIGHTLATCH	(ME)	*ARROW	
1 EACH	LOCK	23-030 CORE WITH HOUSING	26D	SCHLAGE	
1 EACH	CLOSER	4041 AL H	AL	LCN	
1 EACH	KICKPLATE	8"X34" 32D (PRE-ASSEMBLED BY ELIASON)	32D	ELIASON	
1 EACH	GUARD	PILFERGUARD	BC		
2 EACH	SCOPE	DOOR SCOPES	AL S		
1 EACH	ALARM	DETEX EAX500 WITH SCHLAGE IC HOUSING			
1 EACH	PULL	ARROW ARSF12-AL PULL HANDLE		*ARROW	

GROUP 5: RESTROOM					
QTY.	ITEM	DESCRIPTION	FINISH	MFR.	(E) locks to be changed
3 EACH	HINGES	HINGES 4 1/2"X4 1/2", FBB179 NRP 180° HINGE	26D	STANLEY	
1 EACH	LEVER	GRADE 1 PRIVACY	26D		
1 EACH	STOP	WALL BUMPER 411 R-W	32D	IVES	
1 EACH	KICKPLATE	8"X34"	32D	ROCKWOOD	

GROUP 6: MAIN ENTRY					
QTY.	ITEM	DESCRIPTION	FINISH	MFR.	(E) locks to be changed
1 EACH	LOCK	RIM SHELL WITH I CORE (INTERIOR THUMB TURN)	26D	*CAL ROYAL	
1 1/2 PR	BUTT HINGES	BB81 (4 1/2" X 4 1/2") 260	26D	PBB INC.	
1 EACH	CLOSER	8616 689	26D	DORMA	
3 EACH	MUTES	307D	26D	HAGER	
1 SET	PUSH/PULL	TO MATCH EXTERIOR DOOR/STORE FRONT			
1 EACH	DOOR STOP	4" KICK-DOWN TO MATCH EXTERIOR DOOR/STORE FRONT			

GROUP 7: VESTIBULE ENTRY					
QTY.	ITEM	DESCRIPTION	FINISH	MFR.	(E) locks to be changed
1 1/2 PR	BUTT HINGES	BB81 (4 1/2" X 4 1/2") 260	26D	PBB INC.	
1 EACH	CLOSER	8616 689	26D	DORMA	
1 EACH	FLOOR STOP	24F 26D	26D	HAGER	
3 EACH	MUTES	307D	26D	HAGER	
1 SET	PUSH/PULL	TO MATCH EXTERIOR DOOR/STORE FRONT			
1 EACH	DOOR STOP	4" KICK-DOWN TO MATCH EXTERIOR DOOR/STORE FRONT			

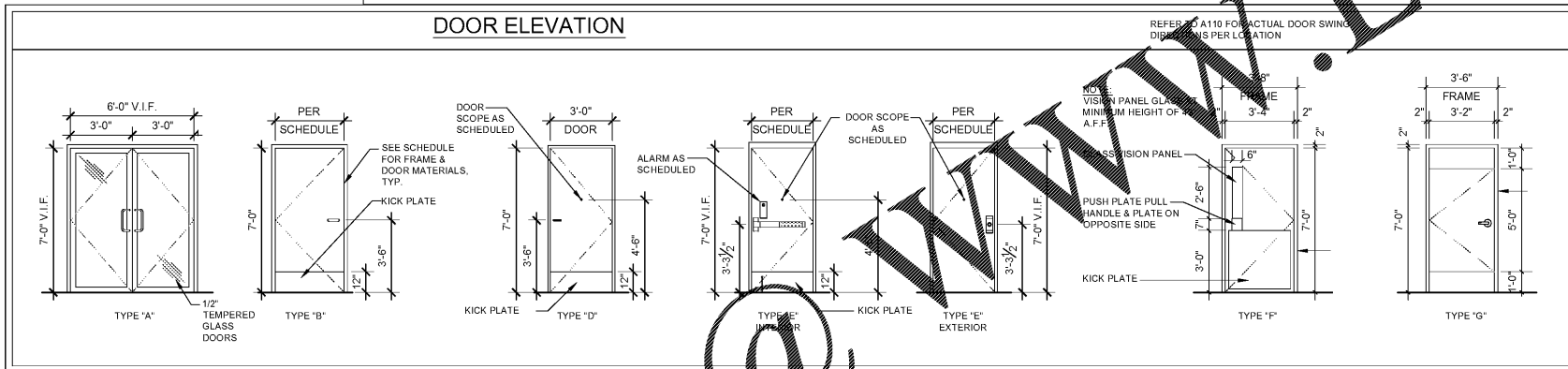
NOTE:
IF DOUBLE DOORS HAVE MULTIPLE LOCKS ALL HOUSINGS EXCEPT FOR THE MAIN SHALL BE BLANK.
G.C. TO CONFIRM THAT EXTERIOR DOORS WILL ACCOMMODATE LARGE FORMAT CORE FOR ALLEN SECURITY.

NOTE:
IF DOUBLE DOORS HAVE MULTIPLE LOCKS ALL HOUSINGS EXCEPT FOR THE MAIN SHALL BE BLANK.

- HARDWARE NOTES:**
1. ALL DOOR HARDWARE TO BE LEVER TYPE TO MEET ADA REQUIREMENTS.
 2. USE WELDED DOOR BUCKS ONLY. DO NOT USE KNOCK DOWN TYPE.
 3. DOOR SCOPE TO BE INSTALLED AT 54" A.F.F.
 4. DOOR LATCHES AND LOCKSETS SHALL BE BELOW 48" TYP.
 5. ALL DOORS TO BE FITTED WITH DOOR SILENCERS.

* DENOTES ITEMS TO BE ORDERED THROUGH OWNER-SPECIFIED SUPPLIER.

DOOR ELEVATION

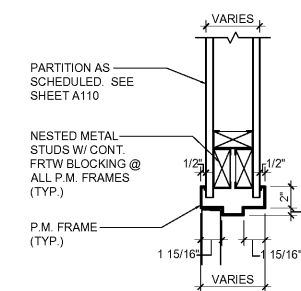


STEEL DOOR FRAME NOTES:

- MORTISE DOOR FRAMES, PROVIDE W/ REINFORCEMENT PLATES FOR HARDWARE; SECURITY WELD PLATES IN PLACE AT FACTORY & TAP FOR SCREWS, WELD IN FOUR PLACES. PROVIDE STRIKE PLATE REINFORCING.
- PUNCH DOOR FRAMES FOR SILENCERS
- FRAMES SHALL REST ON CONC. SLAB. SHALL BE SECURED W/ CONCEALED CLIP ANGLES AND WALL ANCHORS (3 WALL ANCHORS PER JAMB, MIN. AND ONE CLIP ANGLE TYPE FLOOR ANCHOR PER JAMB)

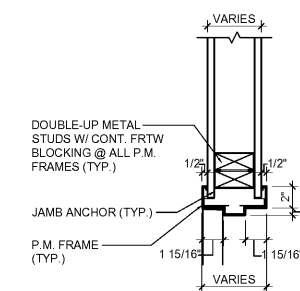
GENERAL HARDWARE REQUIREMENTS:

- HINGES, BUTTS AND PIVOTS: FULL MORTISE, BALL BEARING TYPE IVES O.A.E. 3 HINGES PER DOOR, STEEL PINS ON STEEL HINGES, STAINLESS STEEL PINS ON NON-FERROUS HINGES.



2 P.M. HEAD

SCALE: 1 1/2"=1'-0"



1 P.M. JAMB (HEAD SIM.)

SCALE: 1 1/2"=1'-0"

Order Plans @