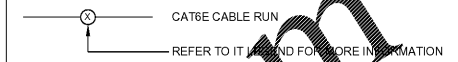


GENERAL NOTES

- GC TO PULL ALL CAT6 CABLE SHOWN
- ALL CABLES ARE TO BE INSTALLED WITHOUT CRIMPING OR USING PLASTIC TIES TO NEGATE DAMAGE TO CAT6
- ALL CABLES ARE TO BE INSTALLED WITH 10'-0" OF COILED CABLE AT EACH END
- (EACH INDIVIDUAL WIRE) IN ALL CABLES, ARE TO BE TAGGED AT EACH END TO IDENTIFY EACH PULL
- ALL LINES ARE TO BE TESTED AND FUNCTIONING AT THE TIME OF TURNOVER TO OWNER'S VENDOR
- G.C. TO CONFIRM W/ INFRASTRUCTURE & TYCO AT BEGINNING OF JOB THAT THEY HAVE PULLED A LOW VOLTAGE PERMIT

LEGEND



LP NOTES

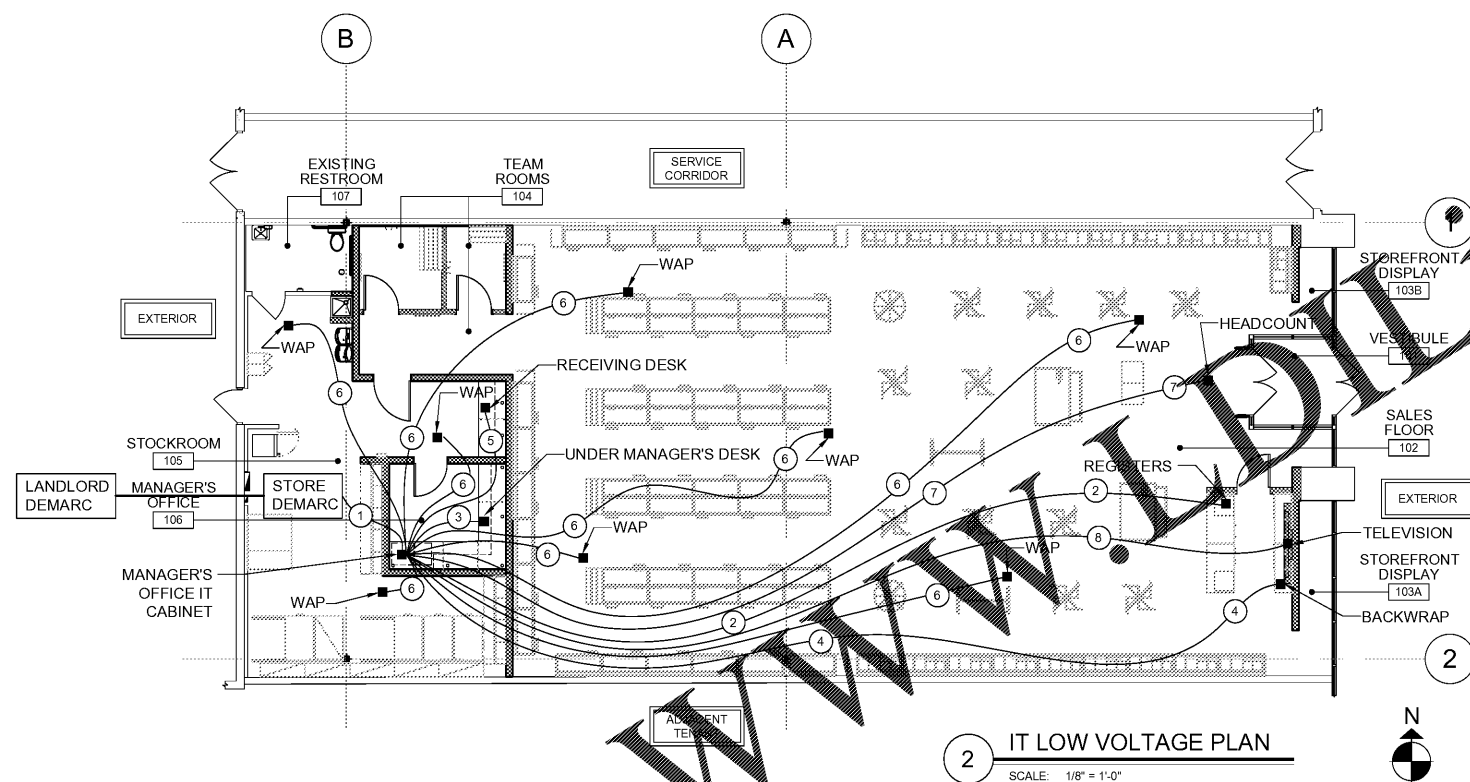
- SECURITY INSTALLATION START DATE TO BEGIN 1 WEEK PRIOR TO TENANT TURNOVER. THE FOLLOWING REQUIREMENTS MUST BE MET:
- STOREFRONT SYSTEM & VESTIBULE MUST BE COMPLETE FOR DOORMAX INSTALLATION (IN-SLAB "L" SYSTEMS REQUIRE A TYCO SITE SURVEY IN WEEK 1 - INSTALLATION AND CONCRETE MUST BE FINISHED 2 WEEKS PRIOR TO TURNOVER)
 - SECURITY DEVICE CABLING AND MOUNTS MUST BE COMPLETE
 - PHONE LINES MUST BE ACTIVE AND SWITCH INSTALLED (CONFIRM WITH IT TECHNICIAN)
 - ALL PERMANENT EXTERIOR DOORS MUST BE IN PLACE FOR ALARM CONTACTS
 - PLEASE NOTE THERE ARE TWO TYCO VENDOR CONTACTS - ONE FOR THE BURGLAR ALARM AND ONE FOR EAS/CCTV. VENDOR CONTACT INFO IS LISTED IN THE DRAWINGS.
 - IT IS THE GC'S RESPONSIBILITY TO SCHEDULE SECURITY INSTALLS NO LESS THAN 3 WEEKS IN ADVANCE. CONFIRM SCHEDULING WITH ADIDAS SECURITY/LP & CONSTRUCTION TEAMS.

IT NOTES

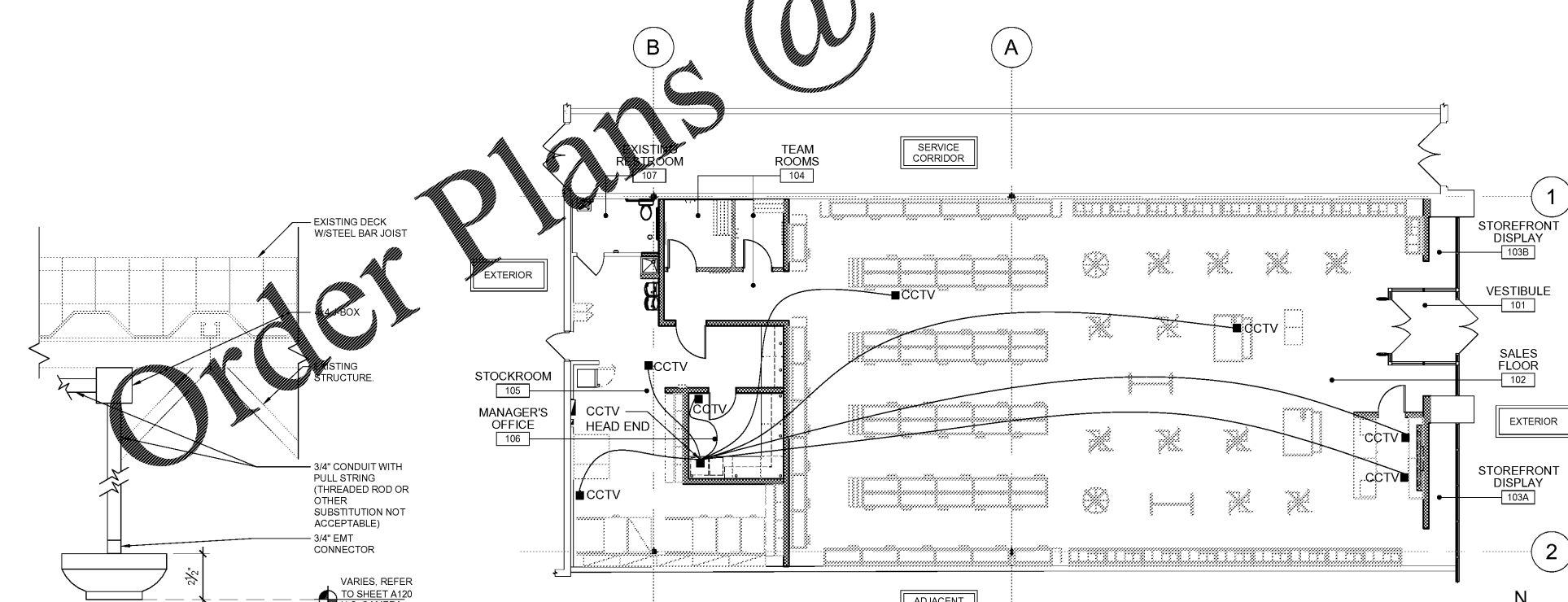
- IT INSTALL TO BEGIN 2 WEEKS PRIOR TO TENANT TURNOVER. THE FOLLOWING REQUIREMENTS MUST BE MET:
- ALL TELE/DATA/LOW VOLTAGE CABLING AND DROPS, INCLUDING TRAFFIC COUNTER, MUST BE 100%
 - PERMANENT POWER MUST BE IN PLACE
 - CASH DESK, BACKWRAP, MANAGER'S OFFICE DESK & SHELVES, AND RECEIVING DESK MUST BE 100% BUILT/INSTALLED
 - CONSTRUCTION (DRYWALL, SANDING, ETC.) NEEDS TO COMPLETE IN THESE AREAS TO AVOID DAMAGE TO EQUIPMENT
 - CONFIRM READINESS WITH IT 2-DAY PRIOR (REFER TO REQUIRED VENDOR LIST FOR CONTACT)
 - CONFIRM SCHEDULING WITH ADIDAS CONSTRUCTION TEAM
- SOUND SYSTEM NOTES:
- NO PRE-WIRING IS REQUIRED FOR THE MUSIC SYSTEM INSTALLATION. INSTALLATION TO BE SCHEDULED/COORDINATED BY GC NO LESS THAN 3 WEEKS IN ADVANCE (REFER TO REQUIRED VENDOR LIST FOR CONTACT)
 - TRIP #1 PRE-WIRING: TO BE SCHEDULED BETWEEN THE GC AND MUSIC VENDOR DIRECTLY.
 - TRIP #2 SYSTEM TIE IN: 1 WEEK PRIOR TO TURNOVER (ALL IT REQUIREMENTS MUST BE MET FOR THIS TO BE COMPLETED)
 - CONFIRM SCHEDULING WITH ADIDAS CONSTRUCTION TEAM

IT LEGEND

- FROM DEMARC TO OFFICE - (3) CAT6 RUNS:
 - CAT6 FROM DMARC TO OFFICE FOR T1
 - CAT6 FROM DMARC TO OFFICE FOR ANALOG NUMBERS
 - CAT6 FROM DMARC TO OFFICE FOR SPARE/BACKUP NETWORKS.
- FROM OFFICE TO REGISTERS - (3) CAT6 RUNS PER REGISTER FOR CONNECTION TO NETWORK, (2) EXTRA CAT6 RUNS AS SPARE/BACKUP.
- FROM IT CABINET TO UNDER MANAGER'S DESK - (8) CAT6 RUNS:
 - CAT6 FROM IT CABINET TO UNDER MANAGER'S DESK FOR IP PHONES.
 - CAT6 FROM IT CABINET TO UNDER MANAGER'S DESK FOR EMAIL PC.
 - CAT6 FROM IT CABINET TO UNDER MANAGER'S DESK FOR FOR PRINTER.
 - CAT6 FROM IT CABINET TO UNDER MANAGER'S DESK FOR FAX LINE.
- (VOIP PHONES) FROM OFFICE TO BACKWRAP (2) CAT6 RUNS FOR LP PHONES.
- FROM OFFICE TO RECEIVING DESK NETWORK CONNECTION CAT6 - (4) RUNS:
 - CAT6 RUN FROM OFFICE TO RECEIVING DESK FOR REG99
 - CAT6 RUN FROM OFFICE TO RECEIVING DESK FOR NETWORKED PRINTER
 - CAT6 RUN FROM OFFICE TO RECEIVING DESK FOR VOIP PHONE
 - CAT6 RUN FOR SPARE
- FROM OFFICE - WIRELESS ACCESS POINT, TYP. FOR (8).
- FROM OFFICE TO FRONT DOOR FOR HEAD COUNT TRAFFIC COUNTER CAT6 INSIDE OF SECURED CONDUIT WITH 2" J-BOX LOCATED 14" TO 36" INSIDE OF DOOR AND 10'-0" TO 13'-0" ABOVE FLOOR
- FROM OFFICE TO TELEVISION AT BACKWRAP (1) CAT6 RUN
 - IF MULTIPLE TV SCREENS: HDMI CABLE TO BE RUN DOWN FROM DISPLAYS, INTO AND THROUGH EXISTING CREDENZA SPACE. INSTALL GARLVP/IMP OVER PENETRATION INTO CREDENZA SPACE AND ROUTE HDMI CABLE THROUGH. CABLE TO BE RUN ALONG BACK CORNER OF SHELF AND SECURED THROUGHOUT LENGTH OF RUN. 1" PENETRATION HOLES TO BE DRILLED AS NEEDED THROUGH CREDENZA DIVIDERS TO CREATE CABLE PATHWAY.



2 IT LOW VOLTAGE PLAN
SCALE: 1/8" = 1'-0"



1 LP LOW VOLTAGE PLAN
SCALE: 1/8" = 1'-0"

3 SECURITY CAMERA MOUNTING DETAIL
SCALE: 3" = 1'-0"

