

KEY NOTES:

- G.C. TO V.I.F. LOCATION OF JUNCTION BOX, CONDUIT, WIRE, ETC. FOR EXTERIOR SIGN AND PROVIDE IF NONE EXIST. IF NEEDED, G.C. TO PROVIDE ACCESS PANEL FOR SIGN J BOX. 2'-0" X 2'-0" MIN. COORDINATE WITH SIGN VENDOR SHOP DRAWINGS FOR LOCATION TYP.
- PENDANT-MOUNTED TRAFFIC COUNTER. REFER TO DETAIL 5/A120 & MEP ENG. DWGS. G.C. TO PROVIDE CONDUIT W/ PULL STRING.
- NEW OR EXISTING EXIT SIGN & EMERGENCY LIGHTING. REFER TO MEP ENG DWGS.
- TRACK LIGHTS TO BE SURFACE MOUNTED TO FACE OF WALL W/ LOCKABLE TRACK HEAD DEVICE IN NOTED LOCATIONS ONLY. GC TO MOUNT TRACK HIGH ENOUGH SO IT CANNOT BE SEEN FROM OUTSIDE THE STORE. MIN. 12" ABOVE T.O. STOREFRONT.
- NEW GWB CEILING IN TEAM ROOMS. LIGHTING TO BE CENTERED. PER PLANS. REFER TO A140 FOR FINISH INFORMATION.
- EXISTING TOILET ROOM CEILING AND LIGHTING TO REMAIN IN THEIR ENTIRETY. G.C. TO P&R AS REQUIRED DUE TO RELOCATED WALL.
- EXISTING RTU ABOVE TO REMAIN. TYP. FOR 2. REFER TO MEP ENG DWGS FOR MORE INFORMATION.
- NEW HVAC BRANCHES AND DIFFUSERS AS NOTED. REFER TO MEP/ENG DWGS FOR NEW DESIGN INFORMATION.
- U.S. OF 360 CAMERA & MOTION DETECTOR TO BE 8'-6" A.F.F. IN NOTED LOCATION ONLY.
- U.S. OF CAMERA AT TEAM ROOMS TO BE AT 8'-6" A.F.F. TO AVOID OBSTRUCTION OF SOFFIT.
- CAMERA IN MANAGER'S OFFICE TO BE MOUNTED ON THE WALL OVER THE DOOR +/- 9'-6" A.F.F.
- NEW "ANNOGOTCHA" HANGING GRAPHIC DISPLAY AT REEBOK STOREFRONT. SEE A131 FOR MORE INFORMATION.
- NEW ACP CEILING IN MANAGER'S OFFICE. LIGHTING TO BE CENTERED PER PLANS. REFER TO A140 FOR FINISH INFORMATION.
- EXISTING SPRINKLER SYSTEM TO BE MODIFIED FOR NEW OPEN CEILING CONCEPT / AS NEEDED DUE TO NEW DESIGN. REFER TO MEP. ENG. DWGS FOR MORE INFORMATION.
- NEW GWB CEILING IN VESTIBULE W/ NEW LIGHTING. REFER TO MEP. ENG. DWGS. FOR MORE INFORMATION.
- G.C. TO EXTEND EXISTING STOREFRONT SOFFIT TO ALIGN W/ FACE OF NEW DISPLAY WALL.

CEILING & LIGHTING LEGEND
 REFER TO MEP ENG. DWGS FOR MORE FIXTURE AND CIRCUITING INFORMATION

TYPE	SYMBOL	DESCRIPTION	SUPPLIER	QUANTITIES
C. LT		LUXBEAM TRACK SYSTEM- WHITE LENGTH: 2, 4, 8'	OWNER	C2= 7 C4= 5 C8= 13
B		16" LED HIGHBAY PENDANT B NL: NIGHT LIGHT REFER TO MEP ENG. DWGS	OWNER	30
P		18" GALVANIZED FINISH PENDANT	OWNER	4
R		6" RECESSED LED CAN DOWNLIGHT	OWNER	8
A		ACP LINEAR FLUORESCENT 2X4 RECESSED	E.T.R. / OWNER	2
J		LINEAR LED TANDEM STRIP LENGTH: 4, 8'	OWNER	J4= 2 J8= 5
		FAN/LIGHT IN TOILET ROOM(S)		1
		SHOPPERTRAK PENDANT STYLE TRAFFIC COUNTER DROPPED WITH A CAT6	OWNER	
		J-BOX FOR EXTERIOR SIGNAGE	LANDLORD, V.I.F.	1
		PENDANT SPEAKERS, SHOWN FOR COORDINATION	BY VENDOR	11
		SECURITY CAMERA	BY VENDOR	7
EXIT		EXISTING EXIT SIGN	E.T.R.	3
EXIT		NEW EXIT SIGN	OWNER	2
EM		EMERGENCY LIGHT WALL-MOUNTED REFER TO MEP ENG DWGS FOR QUANTITY & LOCATIONS.		
		NEW GWB CEILING AT FITTING ROOMS & EXTENDED AT VESTIBULE. EXISTING & NEW STOREFRONT SOFFIT.		
		NEW ACP IN MANAGER'S OFFICE. SEE SHEET A140		

NOTE: TRACK HEAD & WALL WASHER QUANTITIES & DIRECTION VARY, REFER TO PLANS FOR MORE INFO.

SHEET NOTES

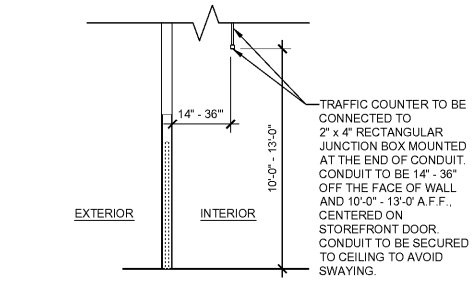
- SALES: BOTTOM OF SPEAKERS TO BE 13'-0" A.F.F. BOTTOM OF CAMERAS & WAP TO BE 11'-6" A.F.F. U.N.O. NOTIFY ARCHITECT OF ANY CONFLICTS.
- STOCKROOM: BOTTOM OF LIGHTING TO BE 13'-0" A.F.F. TO ALLOW FOR 10' HIGH MOBILE SHELVING UNITS. NOTIFY ARCHITECT OF ANY CONFLICTS.
- MINIMUM HEIGHT FOR U.S. OF DUCTWORK IN SALES AREA & STOCKROOM TO BE 13'-6" A.F.F. G.C. TO V.I.F. MAX ATTAINABLE HEIGHT. G.C. TO COORD. W/ ARCHITECT FOR FINAL HEIGHT OF DUCTWORK PRIOR TO INSTALLATION OR RELOCATION. TYP.
- REFER TO ENGINEERING DRAWINGS FOR LIGHTING FIXTURE SCHEDULE.
- DIMENSIONS SHOWN ARE FROM CENTER LINE OF LIGHT FIXTURE. U.N.O.
- REFER TO MEP ENG. DWGS FOR LIGHT SWITCH BANK.
- EXISTING AND NEW HVAC AND SPRINKLER LOCATIONS TO BE VERIFIED WITH LIGHTING LAYOUT. NOTIFY ARCHITECT OF ANY CONFLICTS. REFER TO MEP ENG. DWGS & FP SHOP DWGS TO CONFIRM HVAC AND SPRINKLER LOCATION.
- CONTRACTOR TO FIELD VERIFY LENGTHS OF AIRCRAFT CABLE OR THREADED ROD SUPPORTS REQUIRED FOR SUSPENDED FIXTURE.
- EXISTING RTUS TO REMAIN U.N.O. NEW DUCTWORK TO BE USED THROUGHOUT. REFER TO MEP ENG. DWGS.
- EXISTING SPRINKLER SYSTEM TO REMAIN. REFER TO MEP ENG. DWGS & FP SHOP DWGS FOR ANY REQUIRED RELOCATION OF SPRINKLER HEADS & NEW WORK. REFER TO LANDLORD CRITERIA AND BUILDING FIRE SPRINKLER SHOP DRAWING REVIEW PROCESS.
- LOCATE LIGHTS BASED ON DIMENSIONS ON PLAN. NOTIFY ARCHITECT OF ANY CONFLICTS.
- REFER TO DETAIL 3/A151 FOR SECURITY CAMERA MOUNTING.
- ALL SUSPENDED LIGHT FIXTURES TO BE SUSPENDED FROM TOP CHORD OF BAR JOIST W/ STAINLESS STEEL AIRCRAFT CABLE OR THREADED ROD SYSTEM (REFER TO DETAILS FOR EACH FIXTURE). DO NOT ATTACH TO BOTTOM CHORD OR TO METAL DECK. UNI-STRUT & CABLE TO BE PAINTED TO MATCH CEILING TYP.
- PENDANT-MOUNTED TRAFFIC COUNTER HUNG BETWEEN 11'-0" - 13'-0" A.F.F. CENTERED OVER DOOR 3'-4" INTO SALES FLOOR. PER DETAIL. REFER TO A150 & MEP ENG. DWGS. G.C. TO PROVIDE CONDUIT W/ PULL STRING.
- SHIPMENTS MUST BE REVIEWED UPON RECEIPT. VENDOR MUST BE NOTIFIED WITHIN 24 HOURS OF RECEIPT OF MATERIAL FOR MISSING, LOST, DAMAGED OR CONCEALED DAMAGED PRODUCT IF ANY SUSPECTED. CONCEALED DAMAGED OR DAMAGED SHIPMENT MUST BE SIGNED FOR AS SUCH BEFORE CARRIER LEAVES MATERIAL ON SITE.
- REFER TO FINISH SCHEDULE FOR ADDITIONAL CEILING MATERIAL AND FINISH REQUIREMENTS.
- PROVIDE ACCESS PANELS WITHIN ANY GWB CEILINGS BELOW ANY FULLY ENCLOSED SPACES.
- THE LAYOUT OF ARCHITECTURAL ELEMENTS HAVE PRIORITY OVER THE MECHANICAL AND ELECTRICAL ELEMENTS. NOTIFY ARCHITECT OF ANY CONFLICTS PRIOR TO COMMENCING WORK.
- NO COMBUSTIBLE CEILINGS SHALL BE ALLOWED ABOVE FINISHED CEILING.
- G.C. TO PROVIDE ALL LOW VOLTAGE WIRING AND ANY ASSOCIATED PERMITS, INCLUDING SECURITY BUT EXCLUDING SPEAKERS. SEE LOW VOLTAGE PLAN.
- ALL EXPOSED CEILING STRUCTURE: JOISTS, DECK, WIRING AND MECHANICAL DUCTS ON SALES FLOOR TO BE PAINTED. REFER TO FINISH SCHEDULE.
- G.C. TO PROVIDE A THERMOSTAT DIAGRAM SHEET, TO BE PROTECTED AND HUNG ADJACENT TO THE THERMOSTATS IN THE MANAGER'S OFFICE PRIOR TO JOB COMPLETION.

UNISTRUT NOTES

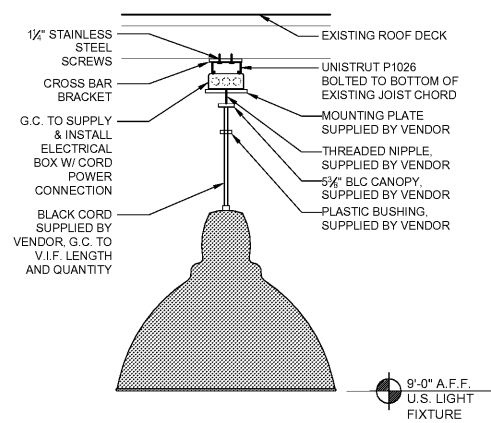
- G.C. TO RUN UNISTRUT THROUGH METAL DECK WHERE POSSIBLE AND SECURE TO TOP CHORD OF BAR JOIST.
- WHERE ALIGNMENT PROHIBITS RUNNING UNISTRUT THROUGH DECKING, G.C. SHOULD FASTEN UNISTRUT TO TOP CHORD OF BAR JOIST WITH UNISTRUT BRAND JOIST CLAMPS.
- WHEN NEEDED G.C. SHALL CONNECT TWO UNISTRUT MEMBERS TOGETHER PERPENDICULAR WITH UNISTRUT P1026 BOLTS BRACKET.
- ALL UNISTRUT SHALL BE INSTALLED PER MFR. RECOMMENDATIONS AND COORDINATED WITH DEVICE LOCATIONS OUTLINED IN THE REFLECTED CEILING PLAN.

FIRE PROTECTION NOTES

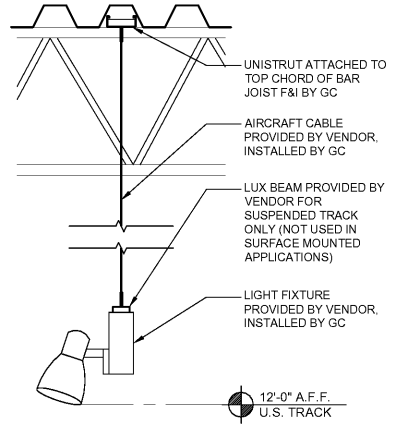
- EXTEND OR MODIFY EXISTING FIRE SUPPRESSION SYSTEM AS REQUIRED BY CODE TO PROVIDE AN APPROVED AUTOMATIC FIRE SUPPRESSION SYSTEM IN COMPLIANCE WITH NFPA 13 IN ALL LOCATIONS. SUBMIT PLANS TO FIRE DEPARTMENT AND OBTAIN APPROVAL PRIOR TO INSTALLATION.
- COORDINATE REWORKING OF EXISTING FIRE PROTECTION SYSTEM AS REQ'D FOR NEW CONSTRUCTION - REFER TO MEP ENG. DWGS TYP.



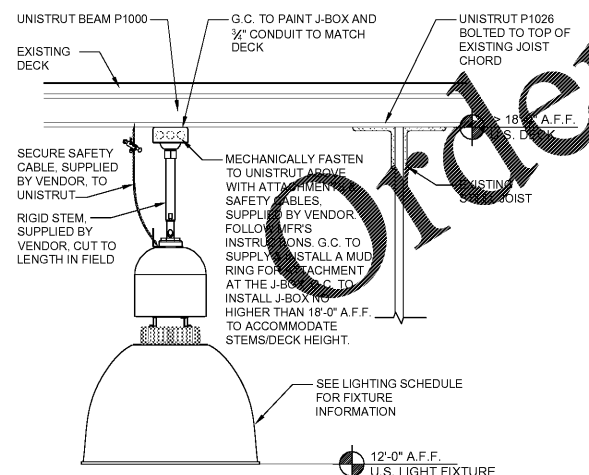
5 TRAFFIC COUNTER DETAIL
 SCALE: 1/4" = 1'-0"



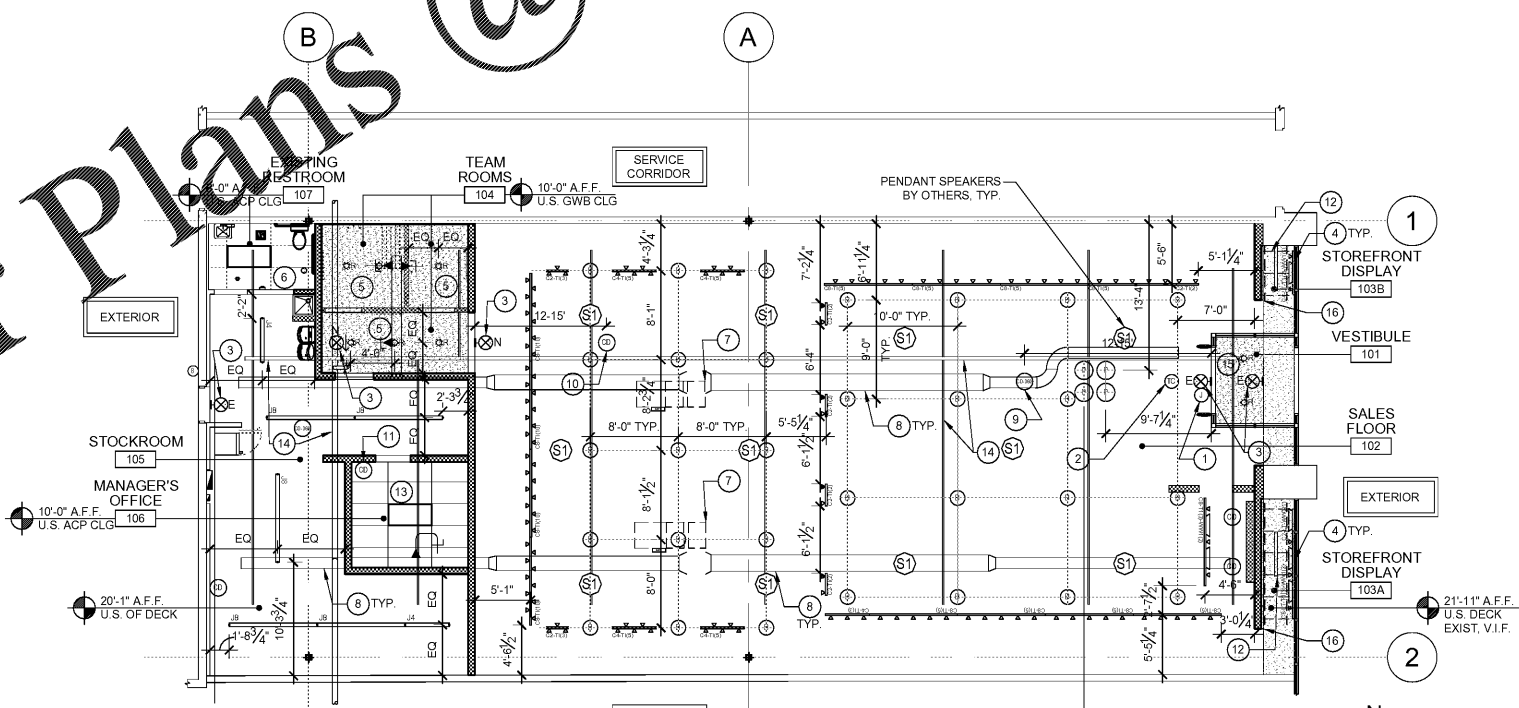
4 LIGHT TYPE 'P' FIXTURE ATTACHMENT
 SCALE: 1 1/2" = 1'-0"



3 TRACK LIGHT DETAIL
 SCALE: 1 1/2" = 1'-0"



2 LIGHT TYPE 'B' 18' A.F.F. & ABOVE ATTACHMENT
 SCALE: 1 1/2" = 1'-0"



1 REFLECTED CEILING PLAN
 SCALE: 1/8" = 1'-0"

Order Plans @ WWW.WLDILING.COM