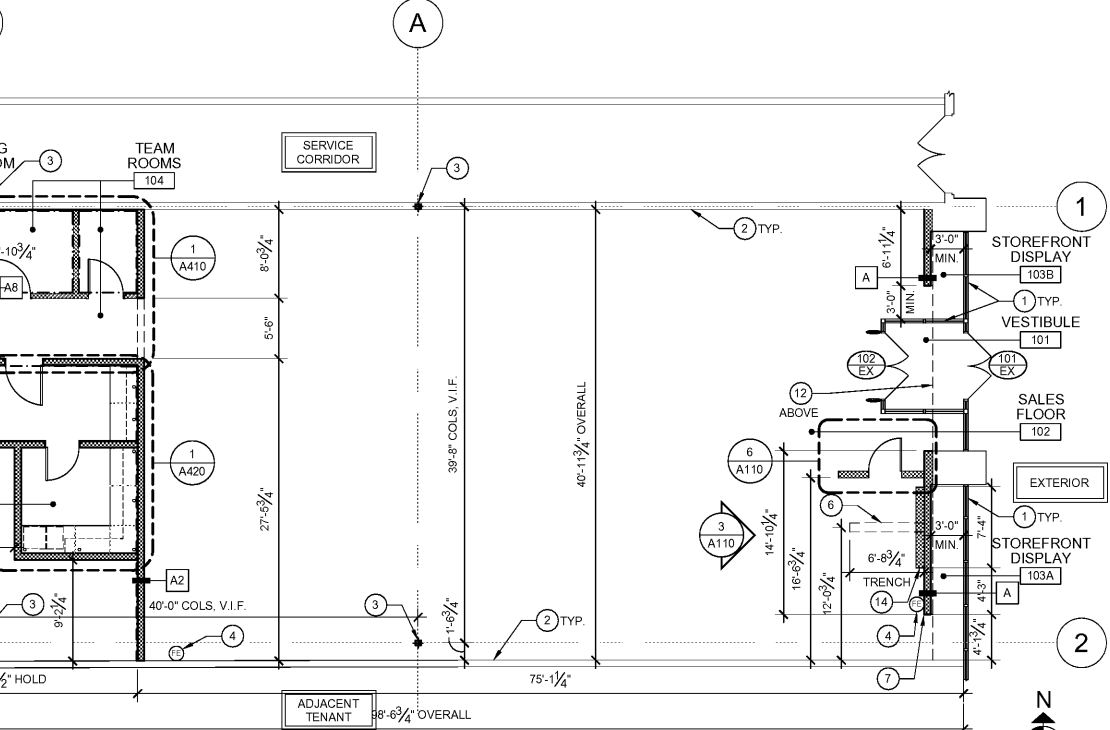
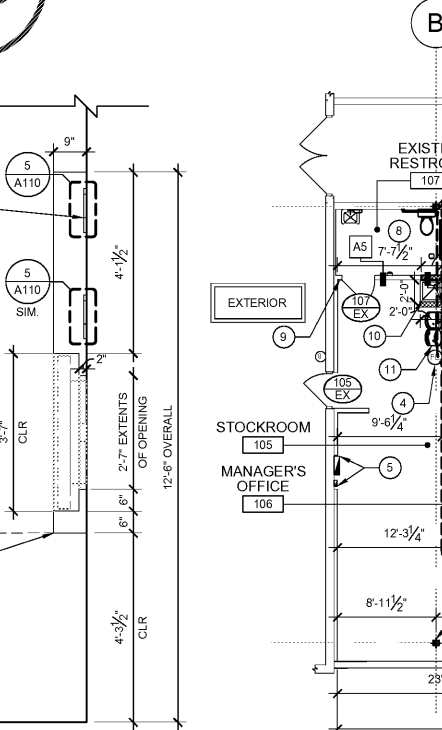
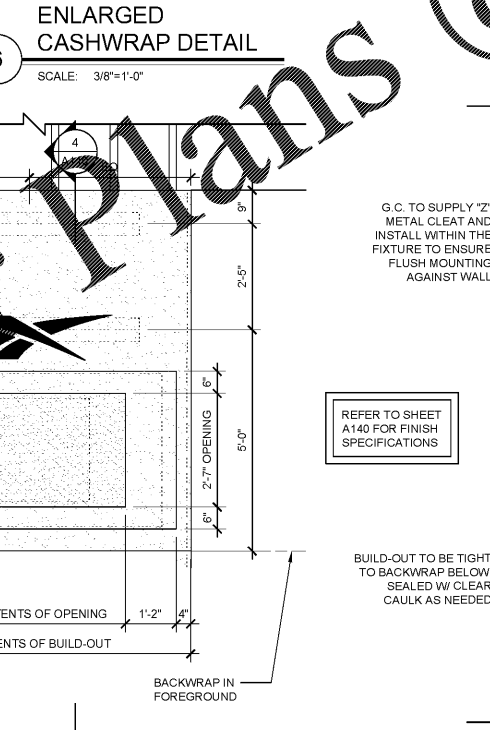
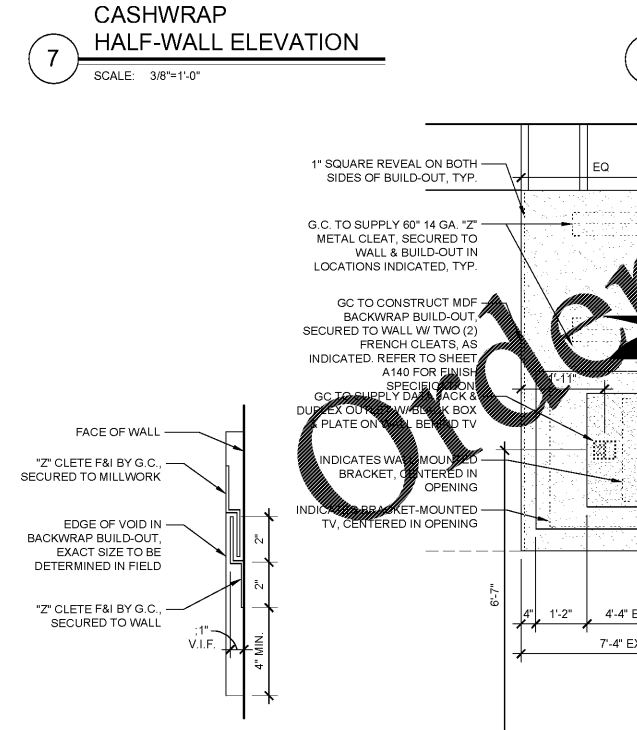
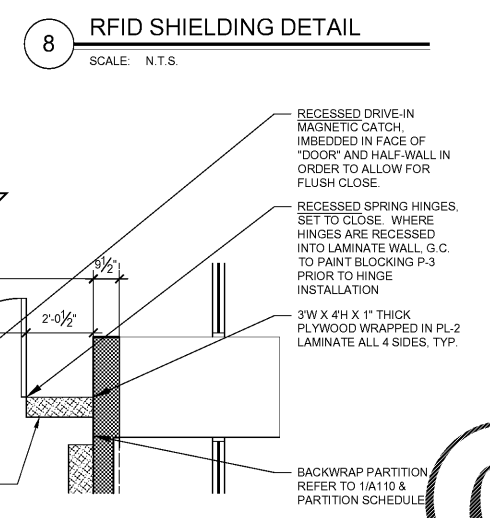
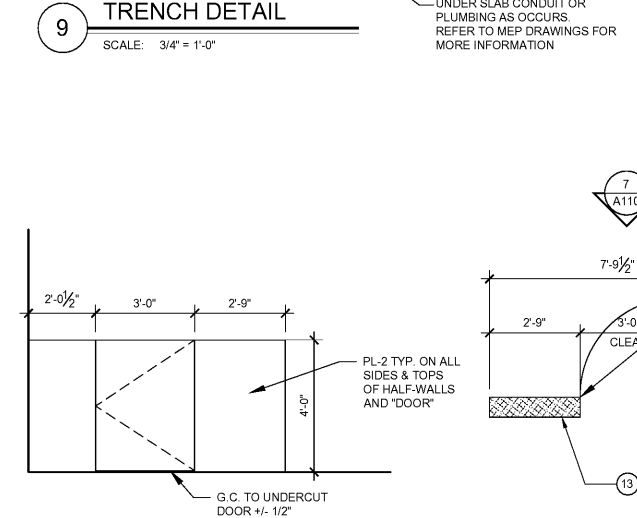
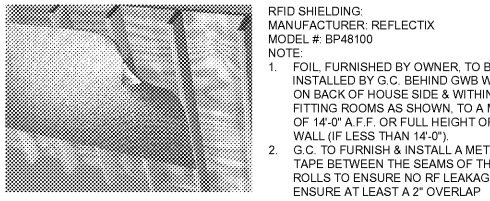
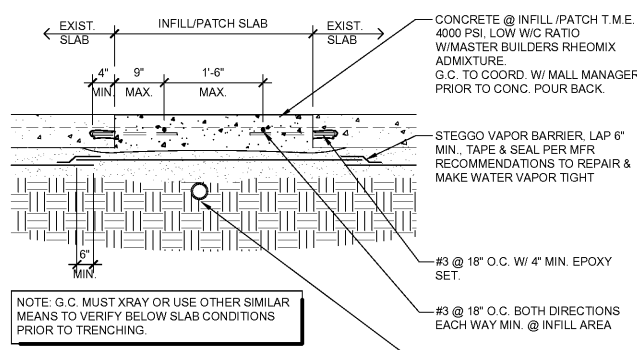


- GENERAL NOTES**
- ALL CONCRETE PATCHING MUST BE LEVEL WITH THE EXISTING CONCRETE FLOOR. CONFIRM LEVEL SLAB WITH SLOPE CHANGES NOT TO EXCEED 1/2" IN 10' IN ANY DIRECTION UNLESS SPECIFIED OTHERWISE IN THE DRAWINGS. DEVIATIONS OUTSIDE THIS TOLERANCE ARE TO BE REMEDIED BY GRINDING OR FILL WITH A COMMERCIAL OVER-LAYMENT MATERIAL.
 - PARTITIONS ARE DIMENSIONED FROM FINISH FACE TO FINISH FACE U.N.O. MAINTAIN DIMENSIONS MARKED CLEAR AND ALLOW FOR THICKNESS OF FINISHES.
 - G.C. IS TO DELIVER ALL WALLS (EXISTING INCLUDED) TO A LEVEL 4 FINISH U.N.O.
 - ALL DIMENSIONS ARE APPROXIMATE AND SHALL BE VERIFIED BY THE CONTRACTOR IN THE FIELD. NOTIFY ARCHITECT IMMEDIATELY OF ANY DISCREPANCIES IN THE DRAWINGS.
 - PROVIDE FIRE RETARDANT TREATED WOOD IN ALL LOCATIONS WHERE RECESSED BLOCKING IS NEEDED ON FIRE-RATED WALLS/PARTITIONS FOR HUNG MILLWORK, EQUIPMENT & FURNITURE.
 - COORDINATE AND PROVIDE BACKING FOR MILLWORK AND ITEMS ATTACHED OR MOUNTED TO WALLS OR CEILINGS.
 - PROVIDE BLOCKING FOR FIXTURES AS REQUIRED. COORDINATE WITH FIXTURE VENDOR FOR SPECIFIC LOCATIONS.
 - THE GENERAL CONTRACTOR SHALL BE RESPONSIBLE FOR THE SECURITY OF THE PROJECT AND MATERIALS WHETHER STORED WITHIN THE PREMISES OR ELSEWHERE UNTIL THE POINT OF SUBSTANTIAL COMPLETION. THIS SHALL INCLUDE ALL OWNER FURNISHED ITEMS AND EQUIPMENT.
 - PROVIDE CORNER GUARDS ON RECESSED G.W.B. CORNERS NOT COVERED BY FIXTURES (INCLUDING CORNERS ON ENCLOSED COLUMNS & AT STOREFRONT WINDOWS). CORNER GUARDS TO BE 2"x2"x3/8" STEEL CORNER GUARDS TO 4'-0" A.F.F.
 - REFER TO PLUMBING DRAWINGS FOR PLUMBING FIXTURE SCHEDULE.
 - PROVIDE G.W.B. CONTROL JOINT EVERY 30'-0" FOR WALLS, TYP.
 - REFER TO SHEET A510 FOR DOOR SCHEDULE.
 - THE GENERAL CONTRACTOR IS TO FURNISH AND INSTALL HAND-OPERATED FIRE EXTINGUISHERS. UL RATED AS PER LOCAL REQUIREMENTS. LOCATION OF UNITS TO BE APPROVED BY THE ADIDAS GROUP. G.C. TO COORD. W/LOCAL FIRE MARSHALL PRIOR TO INSTALLATION.
 - REFER TO MEP/ENG DRAWINGS FOR ADDITIONAL INFORMATION.
 - P&R T.M.E. ALL WALLS, PARTITIONS, FLOORING, CEILINGS ETC. AS REQ'D FOR NEW WORK OR AS A RESULT OF DEMO TYP.
 - ANY PENETRATIONS THROUGH THE ROOF MUST BE COORDINATED, PERFORMED AND SEALED BY THE LANDLORD-REQUIRED ROOFING CONTRACTOR.
 - DUE TO THE STRUCTURAL ENGINEERING DESIGN OF THE ROOF SYSTEM, G.C. SHALL NOT ATTACH OR CONSTRUCT ANYTHING ON THE BOTTOM OF THE ROOF TRUSSES.
 - ANY LANDLORD EQUIPMENT OR COMPONENT THAT IS EXISTING IN THE SPACE MUST REMAIN VISIBLE AND ACCESSIBLE TO THE LANDLORD. TENANT TO INSTALL ACCESS PANELS AS NECESSARY AND PROPERLY LABEL IN SPACE. COORDINATE PLACEMENT WITH FACILITIES OPERATIONS DIRECTOR.
 - ALL REAR ENTRIES MUST HAVE A DOORBELL FOR DELIVERIES.
 - DOOR HARDWARE IS PURCHASED BY THE GC AND SHIPPED TO THE SITE BY THE HARDWARE VENDOR. SHIPMENTS MUST BE REVIEWED UPON RECEIPT. ALLEN SECURITY MUST BE NOTIFIED WITHIN 24 HOURS OF RECEIPT OF MATERIAL FOR MISSING, LOST, DAMAGED OR CONCEALED DAMAGED PRODUCT IF ANY SUSPECTED. CONCEALED DAMAGED OR DAMAGED SHIPMENT MUST BE SIGNED FOR AS SUCH BEFORE CARRIER LEAVES MATERIAL ON SITE.
 CONTACT: KEN ALLEN
 TEL: (609) 448-8707
 KEN@ALENSECURITY.COM

- KEY NOTES**
- EXISTING STOREFRONT SYSTEM TO REMAIN U.N.O. TYP.
 - EXISTING DEMISING WALLS TO REMAIN IN THEIR ENTIRETY. U.N.O. TYP. G.C. TO P&R AS NEEDED DUE TO DEMO/NEW WORK & ENSURE EXISTING FIRE RATING IS MAINTAINED.
 - EXISTING COLUMNS TO REMAIN, TYP.
 - G.C. TO PROVIDE SURFACE-MOUNTED FIRE EXTINGUISHERS. REFER TO MOUNTING HEIGHT ON ELEVATION SHEETS FOR ADDITIONAL INFORMATION. PROVIDE BLOCKING AS REQUIRED FOR MOUNTING OF EXTINGUISHERS. COORDINATE FINAL LOCATION & QUANTITY W/ LOCAL FIRE OFFICIAL.
 - NEW ELECTRICAL & DATA PANELS BY G.C. REFER TO MEP/ENG DWGS, TYP.
 - G.C. TO SAW-CUT TRENCH IN SLAB FOR BELOW SLAB CONDUIT @ CASH WRAP. P&R T.M.E. AND TO MAKE A SMOOTH AND LEVEL SURFACE TO RECEIVE FLOOR FIN. TYP. POUR BACK MUST BE DOWELED AND REINFORCED. SLAB VAPOR BARRIER MUST BE REPAIRED PRIOR TO POUR BACK. REFER TO DETAIL A110 & SHEET A140 FOR FINISH SPECIFICATIONS.
 - G.C. TO RUN WIRING THROUGH WALL SPACES OF WASH DESK. COORD. & REFER TO MEP ENG. DWGS. AND COORD. W/ FIXTURE VENDOR, TYP.
 - EXISTING TOILET ROOM TO BE RENOVATED AND UPDATED TO MEET CURRENT ACCESSIBILITY CODES. TOILETS & GRAB BARS TO BE RELOCATED, SINK E.T.R. SEE SHEET G121, G123 & MEP. ENG. DWGS. FOR MORE INFORMATION.
 - G.C. TO EXTEND HEIGHT OF EXISTING TOILET ROOM PARTITION TO U.S. OF DECK.
 - NEW MOP S.P. REFER TO MEP/ENG DWGS FOR MORE INFORMATION. G.C. TO PROVIDE FR. TO 4'-0" A.F.F. AT WET SIDES.
 - NEW ACCESSIBLE HI-LO DRINKING FOUNTAIN. REFER TO MEP/ENG. DWGS FOR MORE INFORMATION.
 - EXISTING ACCESS PANEL TO REMAIN, G.C. TO V.I.F. & PROVIDE IF NONE EXISTING.
 - G.C. TO CONSTRUCT & INSTALL LAMINATED MDF BOXES, SECURED TO THE FLOOR & WALL AT THE CASHWRAP TO 4'-0" A.F.F. AS NOTED. G.C. TO CONSTRUCT LAMINATED PLYWOOD DOOR, INSTALLED W/ TWO (2) RECESSED SPRING HINGES & A RECESSED MAGNETIC LATCH. REFER TO DETAILS 485/A110 & SHEET A140 FOR FINISH SPECIFICATIONS.
 - G.C. TO CONSTRUCT & INSTALL BACK WRAP BUILD-OUT. REFER TO DETAILS 3, 4, & 5 ON SHEET A110 & SHEET A140 FOR FINISH SPECIFICATIONS.



Order Plans @

WWW.ONLINE