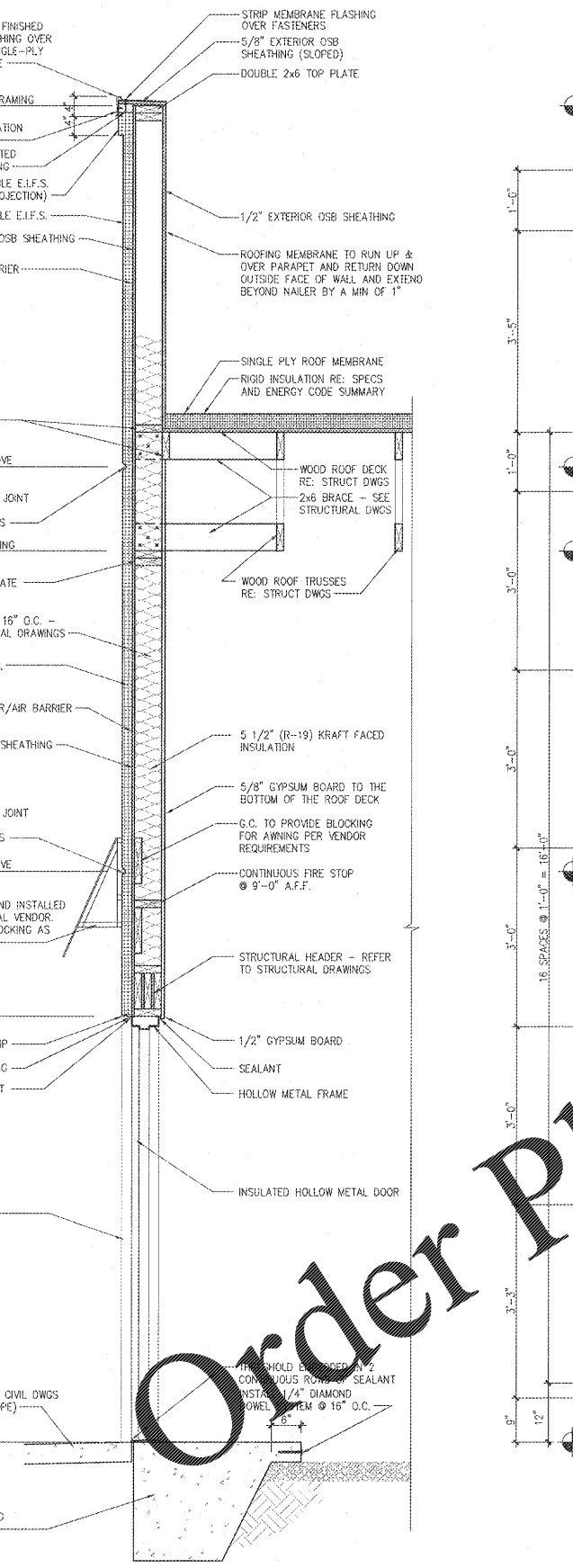
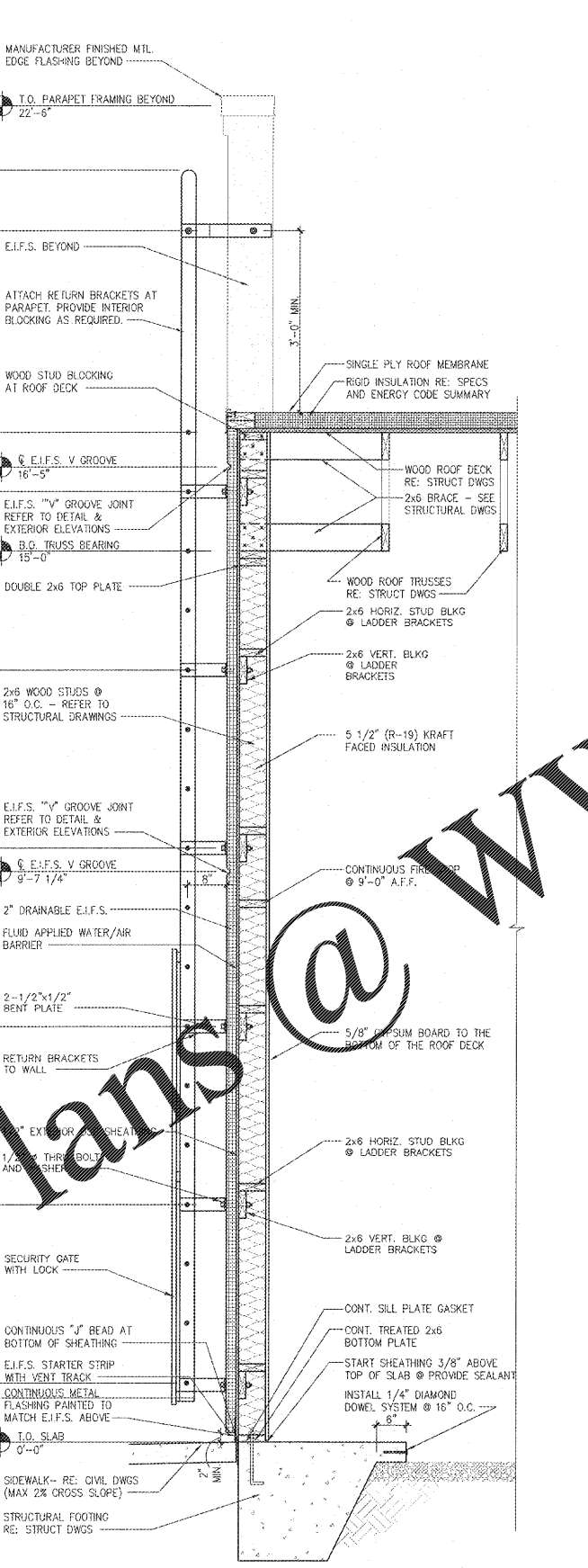
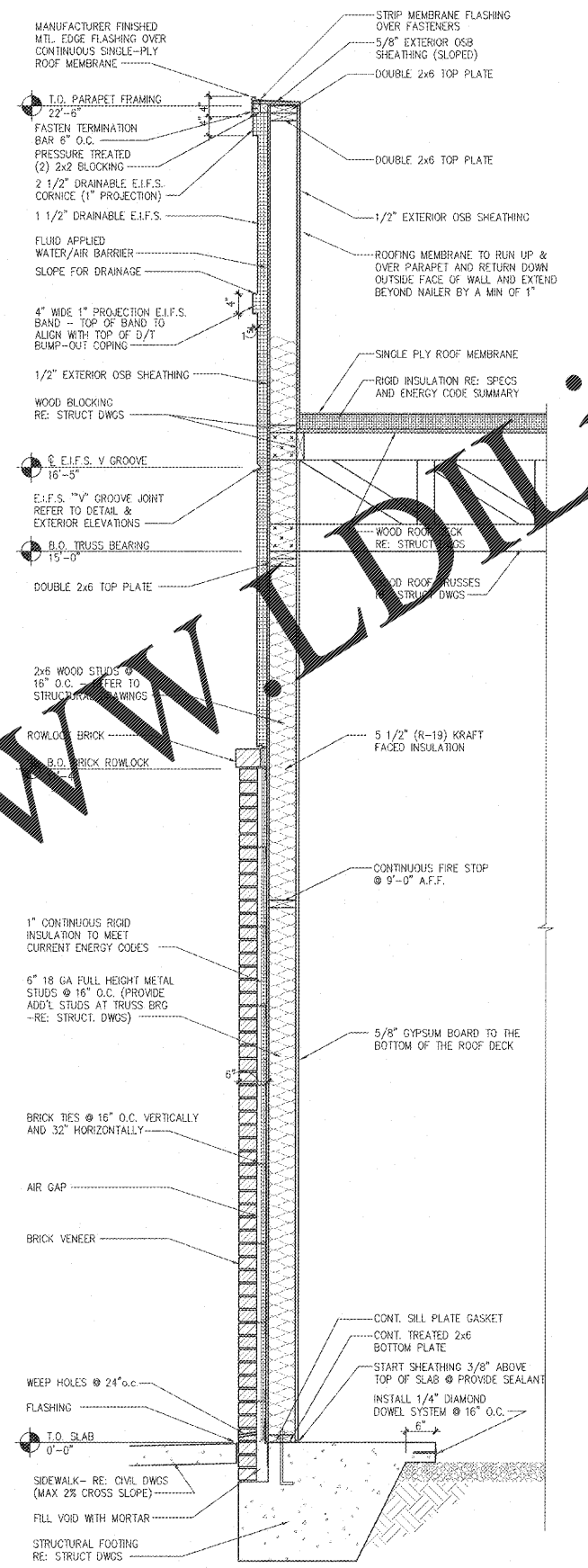
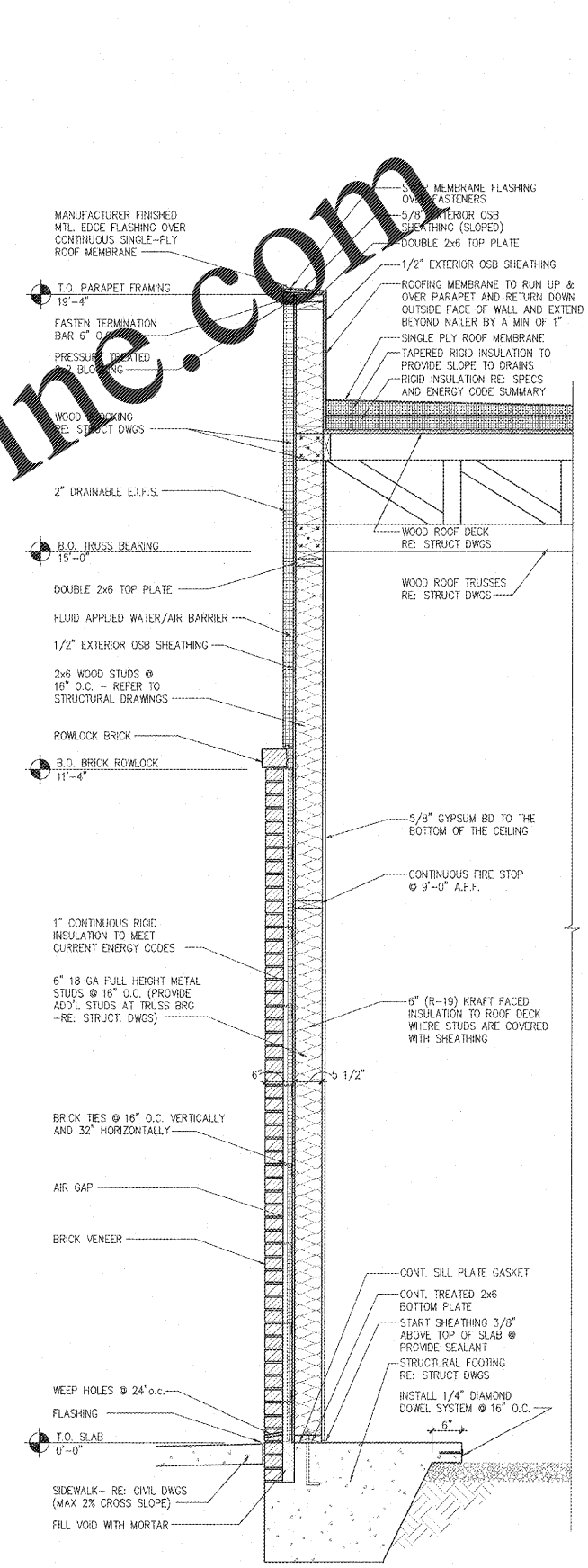


Digitally signed by Tammy Davis Date: 2019.04.11 13:45:40 -0400'

PROJECT: STARBUCKS SHELL BUILDING
350 BLOWING ROCK BOULEVARD
LENOR, NC 28645
DRAWING: WALL SECTIONS

Revisions	
REVISION DATE	
PROJECT DATE	03/26/2019
Drawn By	MTP
Checked By	TD
Sheet No.	A303



4 WALL SECTION A303 SCALE: 3/4" = 1'-0"

3 WALL SECTION A303 SCALE: 3/4" = 1'-0"

2 WALL SECTION A303 SCALE: 3/4" = 1'-0"

1 WALL SECTION A303 SCALE: 3/4" = 1'-0"

Order Plans @ WWW.LDILine.com