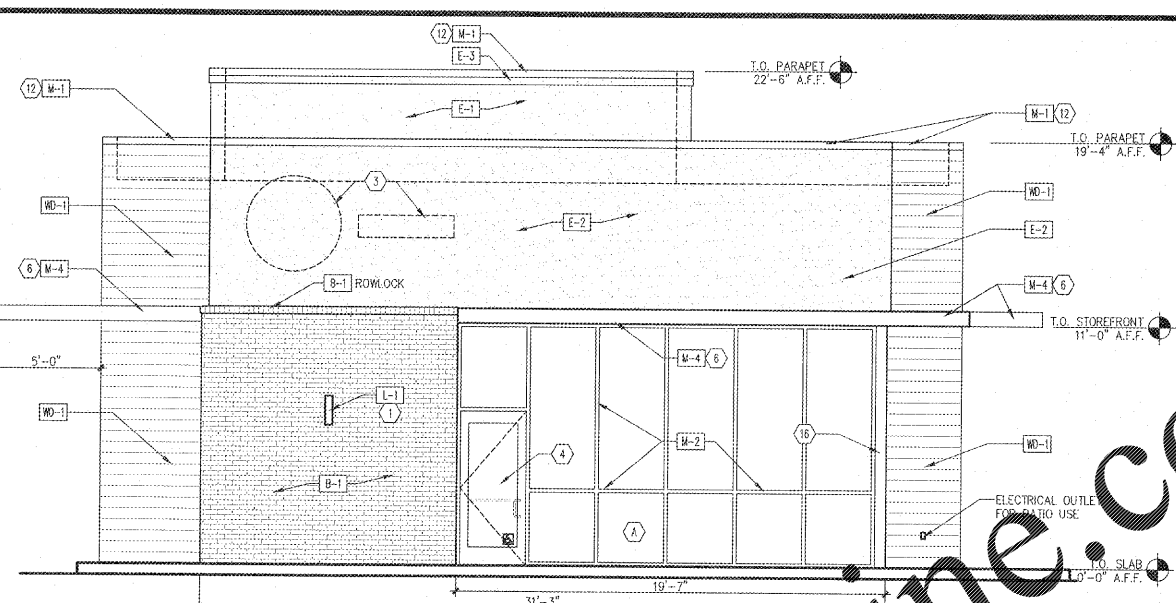
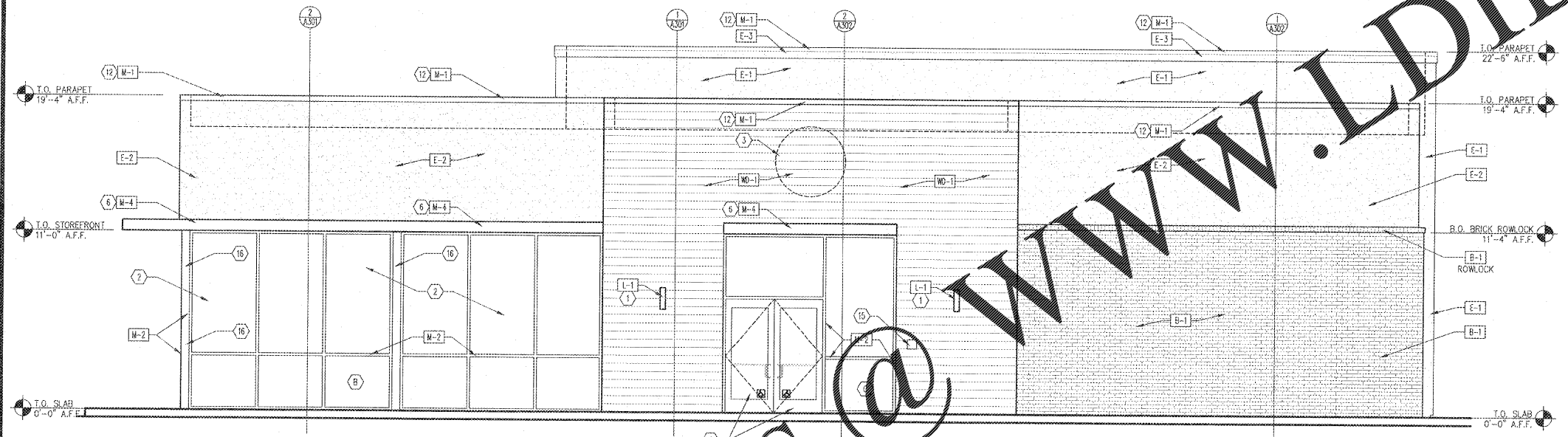


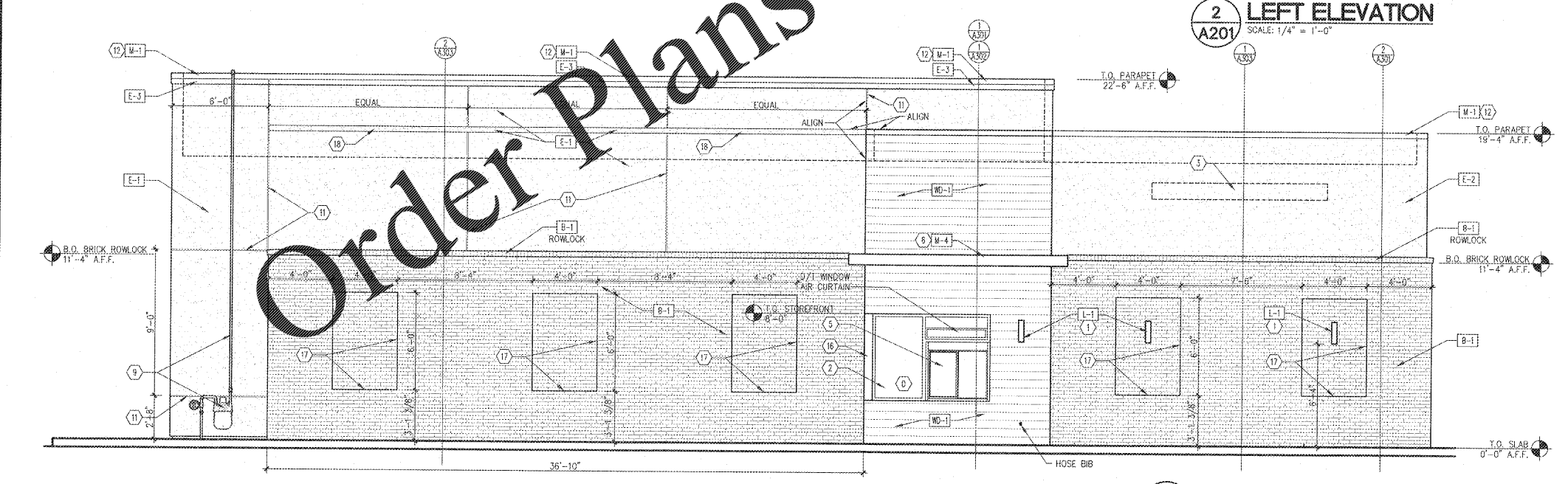
4 REAR ELEVATION
A201 SCALE: 1/4" = 1'-0"



3 FRONT ELEVATION
A201 SCALE: 1/4" = 1'-0"



2 LEFT ELEVATION
A201 SCALE: 1/4" = 1'-0"



1 RIGHT ELEVATION
A201 SCALE: 1/4" = 1'-0"

FRONT ELEVATION GLAZING PERCENTAGE

FRONT ELEVATION TOTAL LINEAR FOOT = 31'-3"
GLAZING LINEAR FOOT = 19'-7"
GLAZING PERCENTAGE = 62%

FRONT ELEVATION MATERIALS PERCENTAGE

MATERIAL	SQUARE FOOTAGE	PERCENTAGE
STOREFRONT	= 215 SQ. FT.	23%
BRICK VENEER	= 136 SQ. FT.	14%
E.I.F.S.	= 441 SQ. FT.	47%
WOOD SIDING	= 152 SQ. FT.	16%
TOTAL	= 944 SQ. FT.	100%

NOTE: PERCENTAGE OF BRICK VENEER AND WOOD SIDING EQUALS 30%

REAR ELEVATION MATERIALS PERCENTAGE

MATERIAL	SQUARE FOOTAGE	PERCENTAGE
STOREFRONT	= 14 SQ. FT.	2%
METAL DOOR	= 27 SQ. FT.	3%
BRICK VENEER	= 109 SQ. FT.	14%
E.I.F.S.	= 513 SQ. FT.	64%
WOOD SIDING	= 136 SQ. FT.	17%
TOTAL	= 799 SQ. FT.	100%

NOTE: PERCENTAGE OF BRICK VENEER AND WOOD SIDING EQUALS 31%

151 SQ. FT. OF E.I.F.S. IS SCREENED FROM VIEW WHICH MAKES THE E.I.F.S. PERCENTAGE ONLY 45% MEETING THE 50% MAXIMUM REQUIREMENT.

LEFT ELEVATION MATERIALS PERCENTAGE

MATERIAL	SQUARE FOOTAGE	PERCENTAGE
STOREFRONT	= 413 SQ. FT.	26%
BRICK VENEER	= 293 SQ. FT.	18%
E.I.F.S.	= 544 SQ. FT.	34%
WOOD SIDING	= 351 SQ. FT.	22%
TOTAL	= 1611 SQ. FT.	100%

NOTE: PERCENTAGE OF BRICK VENEER AND WOOD SIDING EQUALS 40%

RIGHT ELEVATION MATERIALS PERCENTAGE

MATERIAL	SQUARE FOOTAGE	PERCENTAGE
STOREFRONT	= 41 SQ. FT.	2%
BRICK VENEER	= 705 SQ. FT.	43%
E.I.F.S.	= 719 SQ. FT.	44%
WOOD SIDING	= 177 SQ. FT.	11%
TOTAL	= 1642 SQ. FT.	100%

NOTE: PERCENTAGE OF BRICK VENEER AND WOOD SIDING EQUALS 54%

EXTERIOR MATERIAL:

EXTERIOR INSULATION & FINISH SYSTEMS (EIFS)

E-1	TYPE: EIFS MANUFACTURER: DRYVIT COLOR: SW 7053 ADAPTIVE SHADE EIFS FINISH: QUARTZ PUTZ CONTACT: ROBERT DAZEL, AIA TELEPHONE: 734-276-0404
E-2	TYPE: EIFS MANUFACTURER: DRYVIT COLOR: SW 7015 REPOSE GRAY EIFS FINISH: QUARTZ PUTZ CONTACT: ROBERT DAZEL, AIA TELEPHONE: 734-276-0404
E-3	TYPE: EIFS MANUFACTURER: DRYVIT COLOR: TO MATCH COPING COLOR M-1 EIFS FINISH: QUARTZ PUTZ CONTACT: ROBERT DAZEL, AIA TELEPHONE: 734-276-0404

WOOD SIDING

W-1	TYPE: 6" TONGUE AND GROOVE WESTERN RED CEDAR PLANKS, FLUSH JOINT MANUFACTURER: LOCALLY SOURCE COLOR/FINISH: A CLEAR GRADE, SMOOTH FACE PLANKS TO BE RANDOM LENGTHS, METER AT OUTSIDE CORNERS, FINISH WITH BEHR PREMIUM SEMI-TRANSPARENT WEATHERPROOFING ALL-IN-ONE WOOD STAIN COLOR: #5077 SEMI TRANSPARENT
-----	-------------------------------------------------------------------------------------------------------------------------------------------------------------------------------------------------------------------------------------------------------------------------------------------------------------------

MASONRY

M-1	TYPE: NORMAN SIZE WITH 3/8" JOINT MANUFACTURER: CHEROKEE BRICK COLOR: VELOUR LIGHT GRAY GROUT: LIGHT GRAY SUPPLIER: SILICA SAND COMPANY CONTACT: ARMANDO A. TELEPHONE: 305-691-5881
-----	-------------------------------------------------------------------------------------------------------------------------------------------------------------------------------------------------------

METAL

M-1	TYPE: METAL COPING COLOR: PRE-FINISHED TO MATCH RAL#7021 MATTE, MTD028 "FLAT BLACK"
M-2	TYPE: ALUM STOREFRONT SYSTEM COLOR: ANODIZED - TO MATCH RAL#7021 MATTE, MTD028 "FLAT BLACK"
M-3	TYPE: HOLLOW METAL DOOR AND FRAME COLOR: PAINTED TO MATCH RAL#7021 MATTE, MTD028 "FLAT BLACK"
M-4	TYPE: METAL CANOPY/awning COLOR: POWDERCOAT TO MATCH RAL#7021 MATTE, MTD028 "FLAT BLACK"

LIGHTING

L-1	EXTERIOR LIGHTING TYPE: CYLINDER LIGHT SEE ELECTRICAL DRAWINGS FOR FURTHER INFORMATION
L-2	EXTERIOR LIGHTING TYPE: EMERGENCY FIXTURE SEE ELECTRICAL DRAWINGS FOR FURTHER INFORMATION

ELEVATION NOTES:

- DECORATIVE EXTERIOR LIGHTS- MOUNT BOTTOM AT 6'-8" A.F.F. - REFER TO ELECTRICAL DWGS
- STOREFRONT WINDOW SYSTEM WITH SAFETY GLAZING TO MEET CURRENT ENERGY CODES - REFER TO THE ENERGY CODE SUMMARY.
- EXTERIOR WALL SIGNAGE TO BE PROVIDED BY OWNER'S SIGN VENDOR TO COORDINATE WITH SIGN VENDOR AND PROVIDE ELECTRICAL SUPPLY AND BLOCKING AT SIGN LOCATIONS AS REQUIRED. SEE ELEC DWGS FOR J-BOX LOCATION
- EXTERIOR DOOR PER SCHEDULE
- DRIVE THRU WINDOW PROVIDED AND INSTALLED BY G.C.
- CANOPY BY NATIONAL VENDOR - UNDER SEPARATE CONTRACT AND PERMIT. G.C. TO PROVIDE BLOCKING AS REQUIRED.
- HOLLOW METAL DOOR & FRAME PAINT M-3
- ELECTRICAL EQUIPMENT, EIFS TO STOP PRIOR TO ELECTRICAL EQUIPMENT. COORDINATE EXACT DIMENSIONS WITH MANUFACTURER. GC SHALL PROVIDE CONT. SEALANT ALL AROUND EQUIPMENT.
- GAS METER- RE: PLUMBING DWGS- PROVIDE WEATHER SEAL AT PENETRATIONS INTO BUILDING.
- LINE OF ROOF BEYOND.
- E.I.F.S. "V" GROOVE JOINT REFER TO DETAIL - 3/A301
- METAL SNAP ON COMPRESSION EDGE.
- EMERGENCY LIGHT FIXTURE MOUNT BOTTOM OF FIXTURE AT 8'-0" A.F.F.
- EXTERIOR ROOF LADDER - PAINT TO MATCH M-1.
- KNOX BOX SERIES 3200 RECESSED WITH LIFT-OFF DOOR TO BE MOUNTED 5'-0" A.F.F. TO BOTTOM OF MOUNTING BOX. VERIFY REQUIREMENTS WITH LOCAL FIRE MARSHAL.
- WRAP STRUCT. COLUMN W/ALUM. TO MATCH STOREFRONT
- 3/4" RECESSED BRICK "PICTURE FRAMES"
- 4" WIDE 1" PROJECTION E.I.F.S. BAND - SEE WALL SECTIONS.

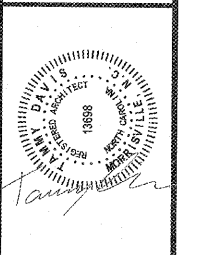
GENERAL NOTES:

- NEW CANOPIES AND SIGNAGE BY OWNER NATIONAL VENDOR TO BE FILED UNDER SEPARATE PERMIT - TYPICAL.
- SUBMIT SHOP DRAWINGS TO ARCHITECT FOR APPROVAL.
- COORD. WITH CIVIL DRAWINGS FOR GENERAL GRADING AND FINAL SURFACE ELEVATIONS.

LMHT Project No. 16201

THIS DRAWING IS THE PROPERTY OF THE ARCHITECT AND MAY NOT BE REPRODUCED OR USED WITHOUT HIS WRITTEN PERMISSION.

LMHT ASSOCIATES
3605 Centerville Rd. Ste. 200
Charlotte, NC 28217
Phone: 704.334.4057



Digitally signed by Tammy Davis
Date: 2019.04.11 13:48:30 -04'00'

PROJECT: STARBUCKS SHELL BUILDING
350 BLOWING ROCK BOULEVARD
LENOR, NC 28645
DRAWING: EXTERIOR ELEVATIONS

Revisions

REVISION	DATE

PROJECT DATE: 03/26/2019
Drawn By: MTP
Checked By: TD
Sheet No. A201