

**LANDSCAPING CALCULATIONS:**

**STREETYARD (BLOWING ROCK BOULEVARD):**  
 FRONTAGE: 103 LINEAR FEET  
 REQUIRED: 1 TREE PER 100 LINEAR FEET AND 10 SHRUBS PER 40 LINEAR FEET  
 = 2 TREES AND 25 SHRUBS  
 PROVIDED: 2 RED MAPLES  
 25 DWARF BURFORD HOLLY

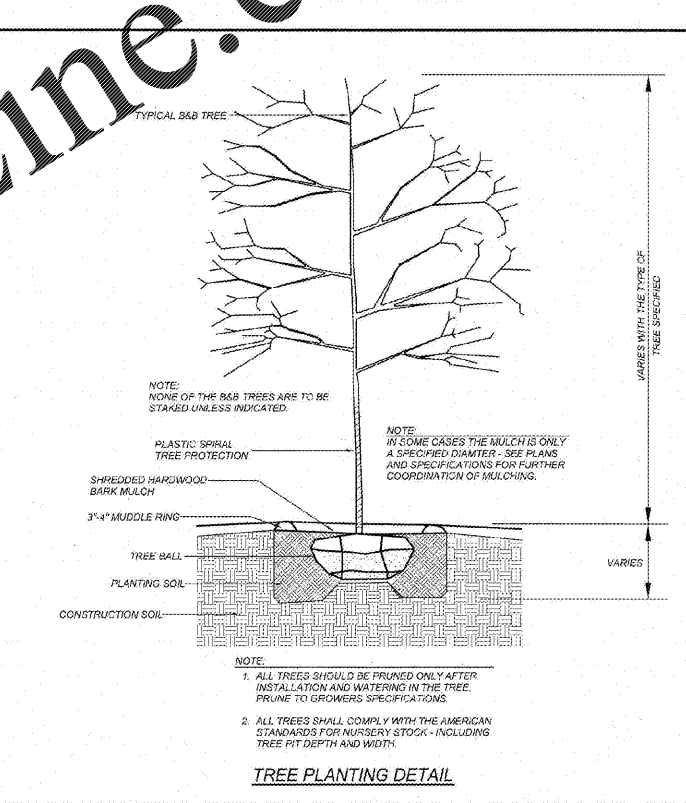
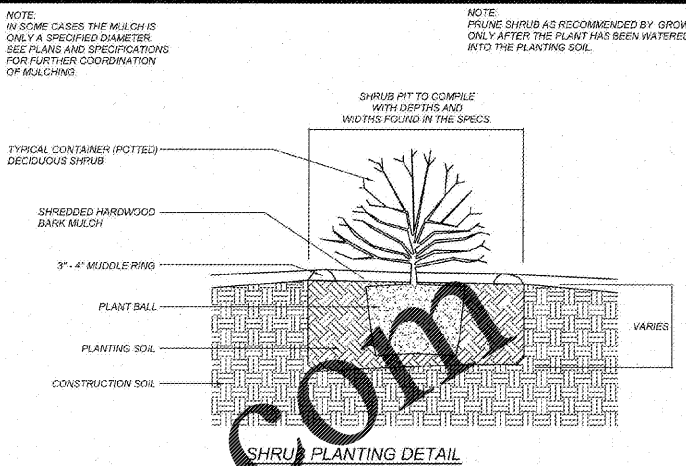
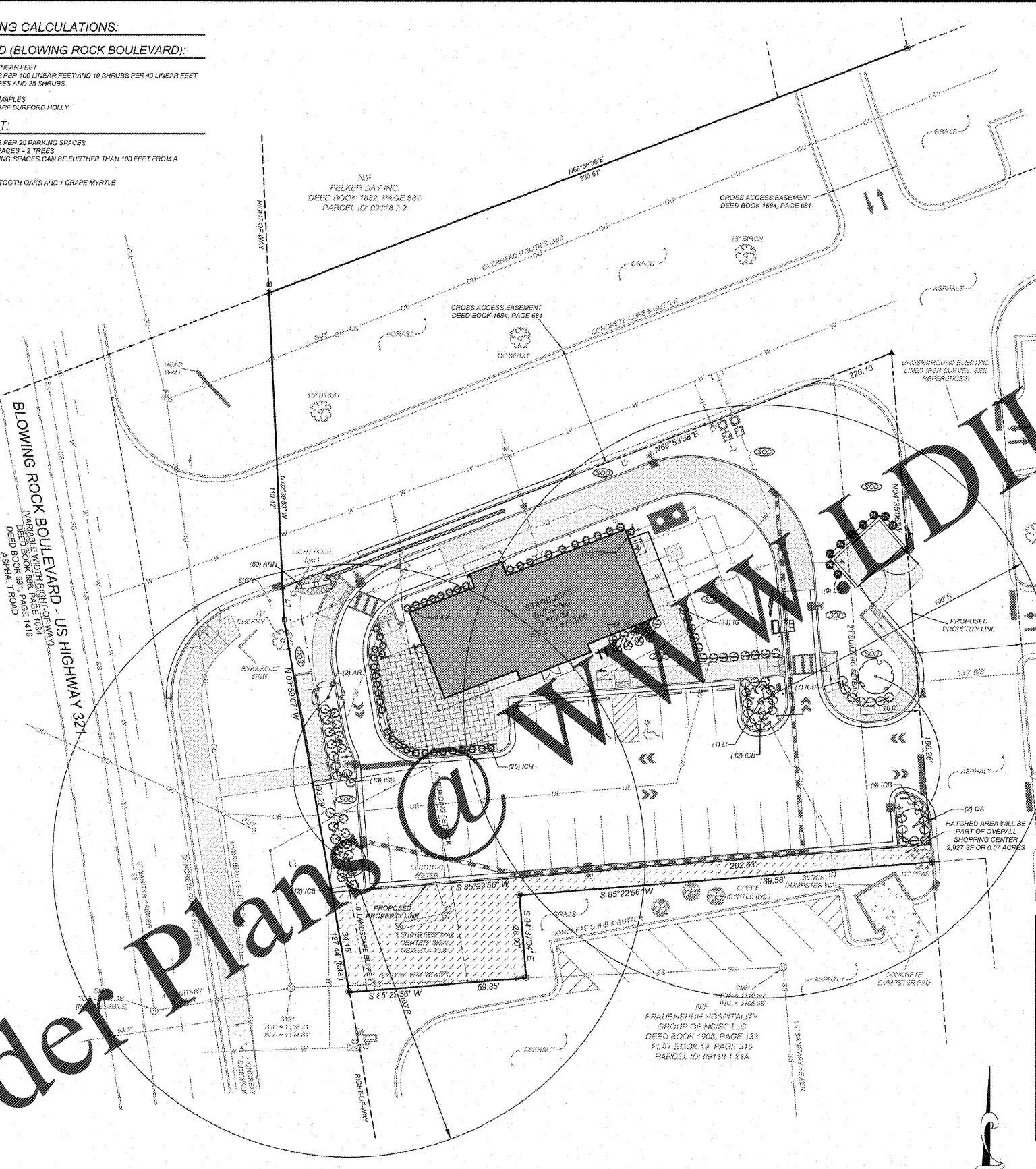
**PARKING LOT:**  
 REQUIRED: 1 TREE PER 20 PARKING SPACES  
 = 28 SPACES = 2 TREES  
 \*\*\*NOTE: NO PARKING SPACES CAN BE FURTHER THAN 100 FEET FROM A PLANTING AREA  
 PROVIDED: 2 SAWTOOTH OAKS AND 1 GRAPE MYRTLE

**TURF NOTES:**

1. CHISEL COMPACTED AREAS AND SPREAD TOPSOIL 3 INCHES DEEP OVER ADVERSE SOIL CONDITIONS, IF AVAILABLE.
  2. RIP ENTIRE AREA TO 6 INCHES IN DEPTH.
  3. REMOVE ALL LOOSE ROCK, ROOTS, AND OTHER OBSTRUCTIONS LEAVING SURFACE REASONABLY SMOOTH AND UNIFORM.
  4. APPLY AGRICULTURAL LIME, FERTILIZER, AND SUPERPHOSPHATE UNIFORMLY AND MIX WITH SOIL (SEE BELOW).
  5. CONTINUE TILLAGE UNTIL A WELL-PULVERIZED, FIRM, REASONABLY UNIFORM SEEDBED IS PREPARED 4 TO 6 INCHES DEEP.
  6. SEED ON A FRESHLY PREPARED SEEDBED AND COVER SEED LIGHTLY WITH SEEDING EQUIPMENT OR CULTIPACK AFTER SEEDING.
  7. MULCH IMMEDIATELY AFTER SEEDING AND ANCHOR MULCH.
  8. INSPECT ALL SEEDING AREAS AND MAKE NECESSARY REPAIRS OR RESEEDINGS WITHIN THE PLANTING SEASON. IF STAND SHOULD BE OVER 80% DAMAGED, RE-ESTABLISH FOLLOWING ORIGINAL LIME, FERTILIZER AND SEEDING RATES.
  9. CONSULT CONSERVATION INSPECTOR ON MAINTENANCE TREATMENT AND FERTILIZATION AFTER PERMANENT COVER IS ESTABLISHED.
- \*APPLY: AGRICULTURAL LIMESTONE - 3 TONS/ACRE (3 TONS/ACRE IN CLAY SOILS)  
 FERTILIZER - 1,000 LBS/ACRE - 15-10-10  
 SUPERPHOSPHATE - 500 LBS/ACRE 20% ANALYSIS  
 MULCH - 2 TONS/ACRE - SMALL GRASS STRAW  
 ANCHOR - ASPHALT EMULSION @ 300 GALS/ACRE
- SOD PREPARATION:  
 FOLLOW PREPARATION AS DIRECTED FOR STEPS 1-5 ABOVE. IMMEDIATELY WATER SOD UPON INSTALLATION AND CONTINUE UNTIL ROOTS ARE ESTABLISHED.
  10. CONTRACTOR SHALL WATER AND MAINTAIN ALL LAWN AREAS UNTIL AN ACCEPTABLE STAND OF GRASS HAS BEEN ESTABLISHED.
  11. ONCE AN ACCEPTABLE STAND OF GRASS HAS BEEN ESTABLISHED, THE CONTRACTOR SHALL REPAIR ALL DAMAGED AREAS AND MONITOR THE LAWN AREAS UNTIL THE GRASS REACHES A HEIGHT OF 4 INCHES TALL.
  12. AT THE TIME THE GRASS REACHES A HEIGHT OF 4 INCHES TALL, THE CONTRACTOR SHALL MOW THE GRASS TO THE HEIGHT OF 3 INCHES AND TURN OVER THE LAWN MAINTENANCE TO THE OWNER.
  13. AN ACCEPTABLE STAND OF GRASS SHALL BE 82% COVERAGE OR BETTER.

**LANDSCAPE NOTES:**

1. THE GENERAL CONTRACTOR SHALL LEAVE THIS SITE AT FINISHED GRADE. THE LANDSCAPE CONTRACTOR SHALL REVISE GRADES AT A MINIMUM TO ENSURE SMOOTH TRANSITIONS BETWEEN PLANTING BEDS AND LAWN AREAS.
2. PLANT GUARANTEE: ALL PLANTS SHALL BE GUARANTEED TO LIVE FOR TWELVE MONTHS. THE GUARANTEE SHALL COMMENCE UPON FINAL ACCEPTANCE OF THE PROJECT. IF ANY PLANTS ARE DEAD OR IN AN UNHEALTHY CONDITION BEFORE FINAL ACCEPTANCE, THE LANDSCAPE CONTRACTOR SHALL REPLACE THEM AT HIS EXPENSE. THIS REPLACEMENT SHALL NOT BE CONSIDERED A GUARANTEED REPLACEMENT.
3. ALL PLANTING SHALL BE PLACED WITHIN A MULCHED PLANTING BED. ALL STRAPPING AND THE TOP 2/3 OF WIRE BASKETS MUST BE CUT AWAY AND REMOVED FROM ROOT BALLS PRIOR TO BACKFILLING PLANTING PIT. REMOVE TOP 1/3 OF BURLAP FROM ROOT BALL.
4. ALL LANDSCAPE WORK SHALL BE IN ACCORDANCE WITH CURRENT CITY STANDARD DETAILS AND SPECIFICATIONS.
5. ALL AREAS NOT MULCHED SHALL BE SEEDED OR SODDED IN ACCORDANCE WITH THE AREA SPECIFIED ON PLANS WITH HYBRID TALL FESCUE OR EQUIVALENT AS PRESCRIBED IN THE SEEDING SCHEDULE AS SHOWN ON THIS SHEET.
6. SITE LIGHTING SHALL NOT BE PLACED IN CONFLICT WITH PLANTED TREES.
7. TREE PROTECTION FENCING TO BE PROVIDED AROUND TREE PRESERVATION AREAS IN ACCORDANCE WITH CITY STANDARDS.
8. COORDINATE ALL WORK WITH SITE LAYOUT AND SITE GRADING, DRAINAGE & UTILITIES PLAN.
9. VERIFY LOCATION OF UTILITIES BEFORE PLANTING.
10. MULCH ALL AREAS THAT ARE NOT SEEDED OR SODDED, WITH SHREDDED HARDWOOD MULCH TO A DEPTH OF 3"-4".
11. THE SELECTION AND INSTALLATION OF PLANTS AND PLANTING METHODS SHALL CONFORM WITH THE STANDARDS OF THE AMERICAN ASSOCIATION OF NURSERYMEN OR THE CITY STANDARD DETAILS AND SPECIFICATIONS, WHICHEVER IS STRICTER.
12. CONTRACTOR IS RESPONSIBLE FOR VERIFYING ALL QUANTITIES. DRAWINGS SHALL RULE OVER PLANT LISTS.
13. SUBSTITUTIONS SHALL BE SUBMITTED TO LANDSCAPE ARCHITECT FOR APPROVAL. PRIOR TO INSTALLATION, SUBSTITUTIONS MAY REQUIRE ADDITIONAL APPROVAL BY THE GOVERNING JURISDICTION.
14. ALL LANDSCAPING SOIL AND FILL SHALL BE FREE FROM WEEDS, REFUSE, AND DEBRIS AT ALL TIMES.
15. TREES AND LARGE SHRUBS SHALL BE ADEQUATELY SUPPORTED, AS NECESSARY, USING STAKES AND GUYS. SUCH SUPPORTS SHALL BE DESIGNED SO AS TO PROTECT TREES AND SHRUBS FROM INJURY. TREES AND SHRUBS SHALL BE FASTENED TO THE SUPPORT WITH AN ACCEPTABLE COMMERCIAL TREE TIE OF PLASTIC OR HOSE COVERED WIRE.
16. THE MAXIMUM GROWTH HEIGHT OF ANY LANDSCAPING WITHIN THE SIGHT TRIANGLE SHALL BE THREE (3) FEET IN HEIGHT.



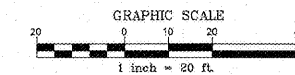
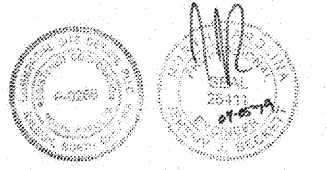
**PLANTING SCHEDULE (SEE LANDSCAPING NOTE #12)**

SYMBOL	KEY	NO.	BOTANICAL NAME	COMMON NAME	CALIPER	HEIGHT	ROOT	COMMENTS
	AR	2	ACER RUBRUM OCTOBER GLORY	OCTOBER GLORY RED MAPLE	2" MIN	8' MIN	B & B	
	QA	2	QUERCUS ACUTISSIMA	SAWTOOTH OAK	2" MIN	8' MIN	B & B	
	LI	1	LAGERSTROEMIA INDICA NATCHEZ	NATCHEZ CRAPE MYRTLE	1 1/2"	6' MIN	E & S	
	ICB	83	ILEX CORNUTA BURFORD MANA	DWARF BURFORD HOLLY	10" MIN	CONT.	3 GAL. MIN	
	ICH	47	ILEX CRENATA HELLERI	HELLERI HOLLY	18" MIN	CONT.	3 GAL. MIN	
	IG	22	ILEX GLABRA "COMPACTA"	COMPACT INKBERRY	18" MIN	CONT.	3 GAL. MIN	
	LC	9	LOROPETALUM CHINENSE "RUBRUM"	REDLEAF LOROPETALUM	24" MIN	CONT.	3-5 GAL	
	ANN	50	ANNUALS - SEASONAL COLOR					

Order Plans @ www.edline.com



Know what's below.  
 Call before you dig.  
 nc811.org or 1-800-632-4949



**REVISIONS**

NO.	DATE	DESCRIPTION
1	04-07-2018	

**CITY COMMENTS #1**

JDF	NO.	DATE	DESCRIPTION

**COMMERCIAL SITE DESIGN**

883 CREEKVIEW ROAD  
 RALEIGH, NORTH CAROLINA 27603  
 (919) 848-4646 FAX: (919) 848-3741  
 WWW.CSDESIGN.COM

**CLIENT:**  
 GEMCAP DEVELOPMENT  
 210 WEST FOURTH STREET  
 SUITE 200  
 WINSTON-SALEM, NC 27101  
 PHONE: (336) 724-0153

**STARBUCKS**  
 350 BLOWING ROCK BOULEVARD  
 LENOIR, CALDWELL COUNTY  
 NORTH CAROLINA  
**LANDSCAPE PLAN**

PROJECT NO: GEM-1806  
 FILENAME: GEM1806-LS  
 DRAWN BY: RCN  
 SCALE: 1" = 20'  
 DATE: 11-13-18  
 SHEET NO: C-8