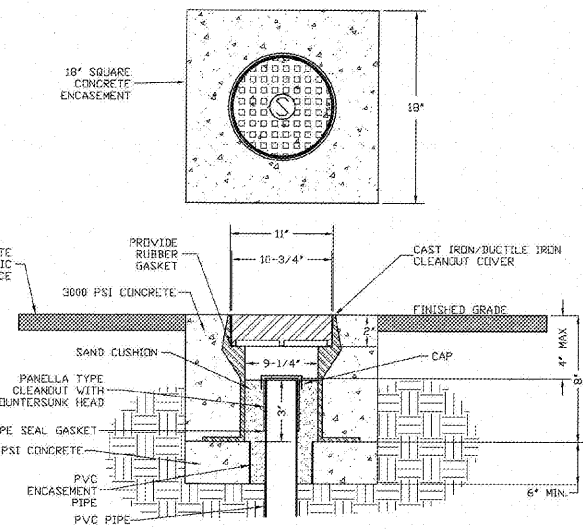
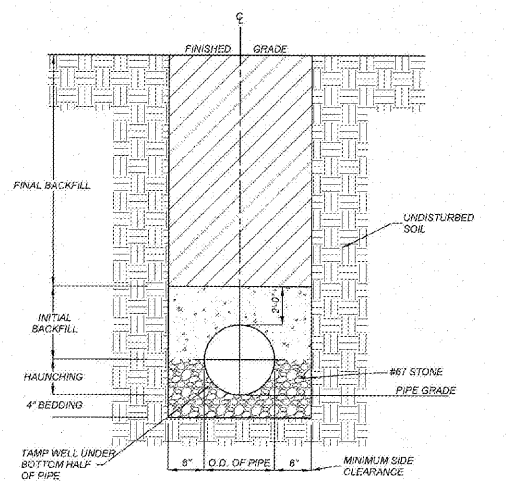
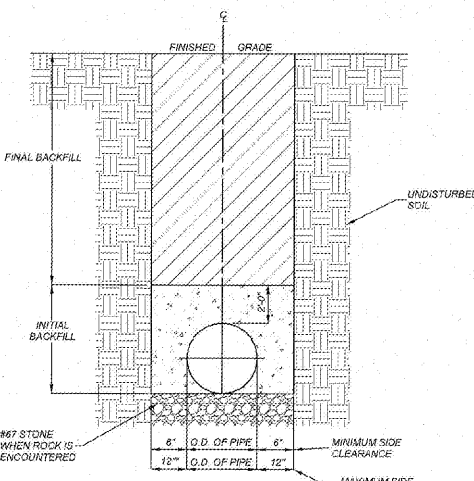


SANITARY SEWER CLEANOUT



CLEANOUT COVER ASSEMBLY TRAFFIC AREA



TRENCH DETAILS

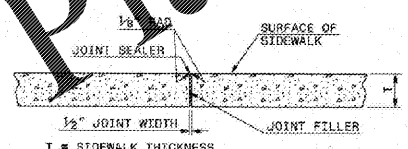
NOTES:
 1. TRENCHES REQUIRING SHORING AND BRACING, DIMENSIONS SHALL BE TAKEN FROM THE INSIDE FACE OF THE SHORING AND BRACING.
 2. NO ROCKS OR BOULDERS 4" OR LARGER TO BE USED IN INITIAL BACKFILL.
 3. ALL BACKFILL MATERIAL SHALL BE SUITABLE NATIVE MATERIAL.
 4. BACKFILL SHALL BE TAMPED IN 6" LIFTS IN TRAFFIC AREAS, 8" TO 10" IN NON-TRAFFIC AREAS.
 5. ACHIEVE 80% COMPACTION IN NON-TRAFFIC AREAS AND 90% COMPACTION IN TRAFFIC AREAS.
 6. IF IN EASEMENT 4" TOPSOIL AND 12" CLEAN SELECT FILL IS REQUIRED.
 7. NO BOULDERS 8" IN DIAMETER OR GREATER ALLOWED.

TRENCH BOTTOM DIMENSIONS & BACKFILLING REQUIREMENTS FOR DUCTILE IRON AND REINFORCED CONCRETE PIPE

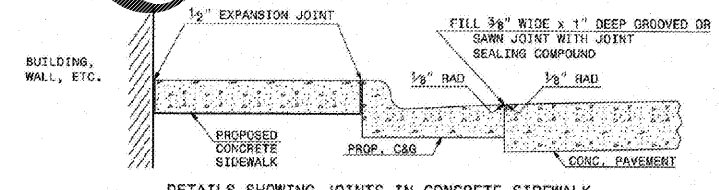
TYPICAL TRENCH BOTTOM DIMENSIONS FOR SDR 35 PVC GRAVITY PIPE
 1. FOR TRENCHES REQUIRING SHORING AND BRACING, DIMENSIONS SHALL BE TAKEN FROM THE FACE OF THE SHORING AND BRACING.
 2. NO ROCKS OR BOULDERS 4" OR LARGER TO BE USED IN INITIAL BACKFILL.
 3. ALL BACKFILL MATERIAL SHALL BE SUITABLE NATIVE MATERIAL.
 4. BACKFILL SHALL BE TAMPED IN 6" LIFTS IN TRAFFIC AREAS, 8" TO 10" IN NON-TRAFFIC AREAS.

TRENCH BOTTOM DIMENSIONS & BACKFILLING REQUIREMENTS FOR PVC GRAVITY SEWER MAIN

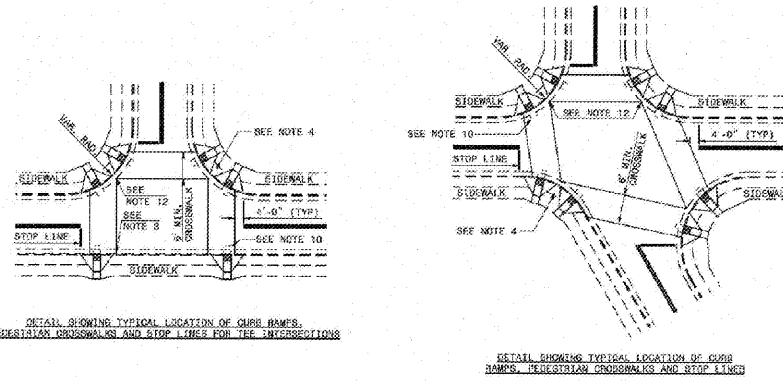
NOTES:
 CONSTRUCT STANDARD SIDEWALK 5' WIDE AND 4" THICK UNLESS OTHERWISE DENOTED ON PLANS.
 PLACE A GROOVE JOINT 1" DEEP WITH 1/8" RADIUS IN THE CONCRETE SIDEWALK AT 5' INTERVALS. ONE 1/2" EXPANSION JOINT WILL BE REQUIRED AT 50' INTERVALS. A 1/2" EXPANSION JOINT WILL BE REQUIRED WHERE THE SIDEWALK JOINS ANY RIGID STRUCTURE.
 SEE STD. DWG. 848.05 FOR CURB RAMP DETAILING REQUIREMENTS AND CONSTRUCTION GUIDELINES.



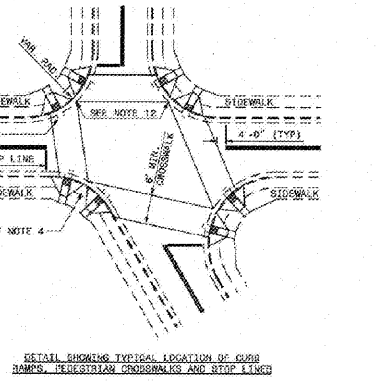
TRANSVERSE EXPANSION JOINT IN SIDEWALK



DETAILS SHOWING JOINTS IN CONCRETE SIDEWALK

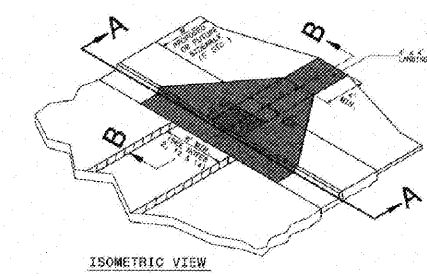


DETAIL SHOWING TYPICAL LOCATION OF CURB RAMP, PEDESTRIAN CROSSWALKS AND STOP LINES

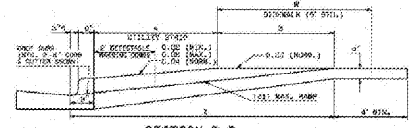


DETAIL SHOWING TYPICAL LOCATION OF CURB RAMP, PEDESTRIAN CROSSWALKS AND STOP LINES

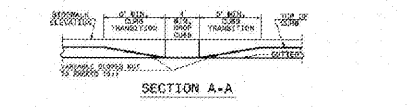
- NOTES:
- CONSTRUCT THE RAMP SURFACE TO BE STABLE, FIRM, AND SLIP RESISTANT. CONSTRUCT THE CURB RAMP TYPE AS SHOWN IN THE PAVEMENT MARKING PLANS OR AS DIRECTED BY THE ENGINEER.
 - LOCATE CURB RAMP AND PLACE PEDESTRIAN CROSSWALK MARKINGS AS SHOWN IN THE PAVEMENT MARKING PLANS. WHEN FIELD ADJUSTMENTS REQUIRE MOVING CURB RAMP OR MARKINGS AS SHOWN, CONTACT THE SIGNALING AND DETAILING UNIT ON LOCATION AS DIRECTED BY THE ENGINEER.
 - COORDINATE THE CURB RAMP AND THE PEDESTRIAN CROSSWALK MARKINGS SO A 2' CLEAR SPACE AT THE BASE OF THE CURB RAMP WILL FALL WITHIN THE PEDESTRIAN CROSSWALK LINES.
 - SET BACK DISTANCE FROM INSIDE CROSSWALK MARKING TO NEAREST EDGE OF TRAVELWAY IS 4' MINIMUM.
 - REFER TO THE PAVEMENT MARKING PLANS FOR STOP BAR LOCATIONS AT SIGNALIZED INTERSECTIONS. IF A PAVEMENT MARKING PLAN IS NOT PROVIDED, CONTACT THE SIGNAL DESIGN SECTION FOR STOP BAR LOCATIONS OR LOCATIONS AS DIRECTED BY THE ENGINEER.
 - TERMINATE PARKING A MINIMUM OF 20' BACK FROM A PEDESTRIAN CROSSWALK.
 - CONSTRUCT CURB RAMP A MINIMUM OF 4' WIDE.
 - CONSTRUCT THE RUNNING SLOPE OF THE RAMP 0.30% MAXIMUM.
 - ALLOWABLE CROSS SLOPE OR SIDEWALKS AND CURB RAMP WILL BE 2% MAXIMUM.
 - CONSTRUCT THE CURB RAMP SLOPE WITHIN 10% MEASURED ALONG THE CURB LINE.
 - CONSTRUCT THE COUNTER SLOPE OF THE CURB OR STREET AT THE BASE OF THE CURB RAMP A MAXIMUM OF 2% AND MAINTAIN A SMOOTH TRANSITION.
 - CONSTRUCT LANDINGS FOR SIDEWALKS A MINIMUM OF 4'x4' WITH A MAXIMUM SLOPE OF 2% IN ANY DIRECTION. CONSTRUCT LANDINGS FOR MEDIAN ISLANDS A MINIMUM OF 7'x7' WITH A MAXIMUM SLOPE OF 2% IN ANY DIRECTION.
 - TO USE A MEDIAN ISLAND AS A PEDESTRIAN REFUGE AREA, MEDIAN ISLANDS WILL BE A MINIMUM OF 6' WIDE. CONSTRUCT MEDIAN ISLANDS TO PROVIDE A 2' CLEAR SPACE OVER OR THROUGH THE ISLAND.
 - SMALL PANELIZATION ISLANDS THAT CAN NOT PROVIDE A 5'x5' LANDING AT THE TOP OF A RAMP, WILL BE CUT THROUGH LEVEL WITH THE SURFACE STREET.
 - CURB RAMP WITH RETURNED CURBS MAY BE USED ONLY WHERE PEDESTRIANS WOULD NOT NORMALLY WALK ACROSS THE RAMP. THE ADJACENT SURFACE IS PLANTING OR OTHER NON-WALKING SURFACE ON THE SIDE APPROACH IS SUBSTANTIALLY DESTRUCTED.
 - PLACE A 1/2" EXPANSION JOINT WHERE THE CONCRETE CURB RAMP JOINS THE CURB AS SHOWN IN ROADWAY STANDARD DRAWING 848.01
 - PLACE ALL PEDESTRIAN PUSH BUTTON ACTUATORS AND CROSSING SIGNALS AS SHOWN IN THE PLANS OR AS SHOWN IN THE MUTCD.
 - CURB RAMP THROUGH MEDIAN ISLANDS, SINGLE RAMP AT DUAL CROSSWALKS OR LIMITED R/W SITUATIONS, WILL BE HANDLED BY SPECIAL DETAILS. CONTACT THE CONTRACT STANDARDS AND DEVELOPMENT UNIT FOR THE DETAILS OR FOR A SPECIAL DESIGN.



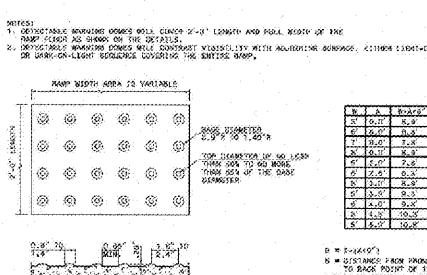
ISOMETRIC VIEW



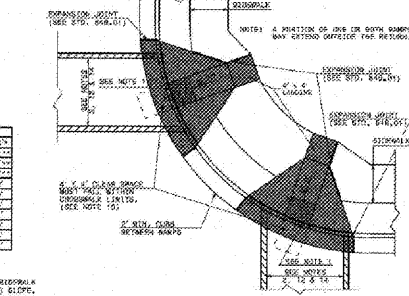
SECTION B-B



SECTION A-A



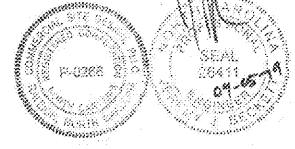
DETECTABLE WARNING DOMES



PLAN VIEW

ROADWAY STANDARD DRAWING FOR CONCRETE SIDEWALK
 SHEET 1 OF 1
 848.01

ROADWAY STANDARD DRAWING FOR CURB RAMP
 PROPOSED CURB AND GUTTER
 SHEET 1 OF 1
 848.05



811
 Know what's below.
 Call before you dig.
 nc811.org or 1-800-632-4949

NO.	DATE	BY	DESCRIPTION
1	04-01-2019	JDF	

COMMERCIAL SITE DESIGN
 897 CREECHWOOD ROAD
 RALEIGH, NORTH CAROLINA 27603
 (919) 846-6021 FAX: (919) 848-5741
 WWW.CSDDESIGN.COM

CLIENT:
 GEMCAP DEVELOPMENT
 210 WEST FOURTH STREET
 SUITE 200
 WINSTON-SALEM, NC 27101
 PHONE: (336) 724-0163

STARBUCKS
 350 BLOWING ROCK BOULEVARD
 LENOIR, CALDWELL COUNTY
 NORTH CAROLINA

PROJECT NO: GEM-1806
 FILENAME: GEM1806-DTL3
 DRAWN BY: RCN
 SCALE: N.T.S.
 DATE: 11-13-18
 SHEET NO: C-7