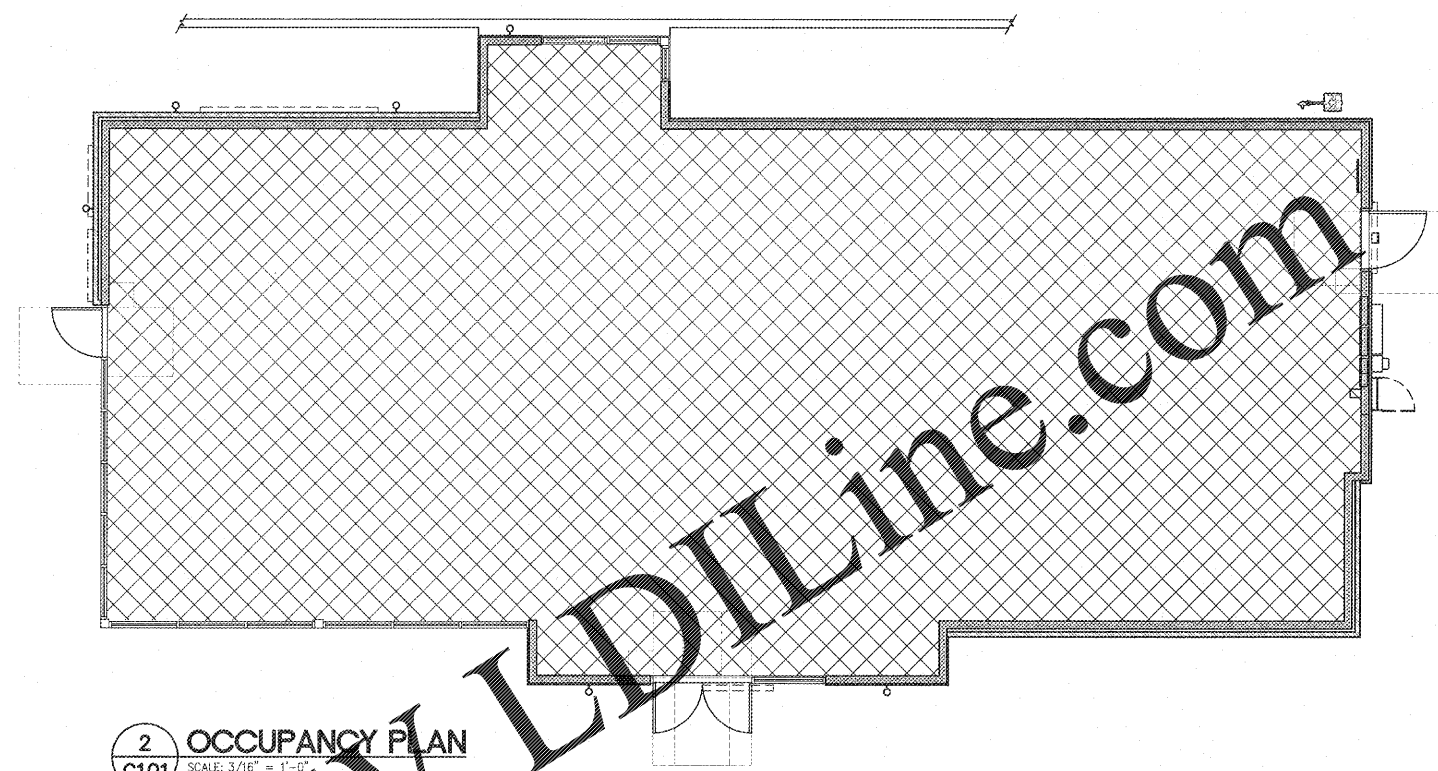


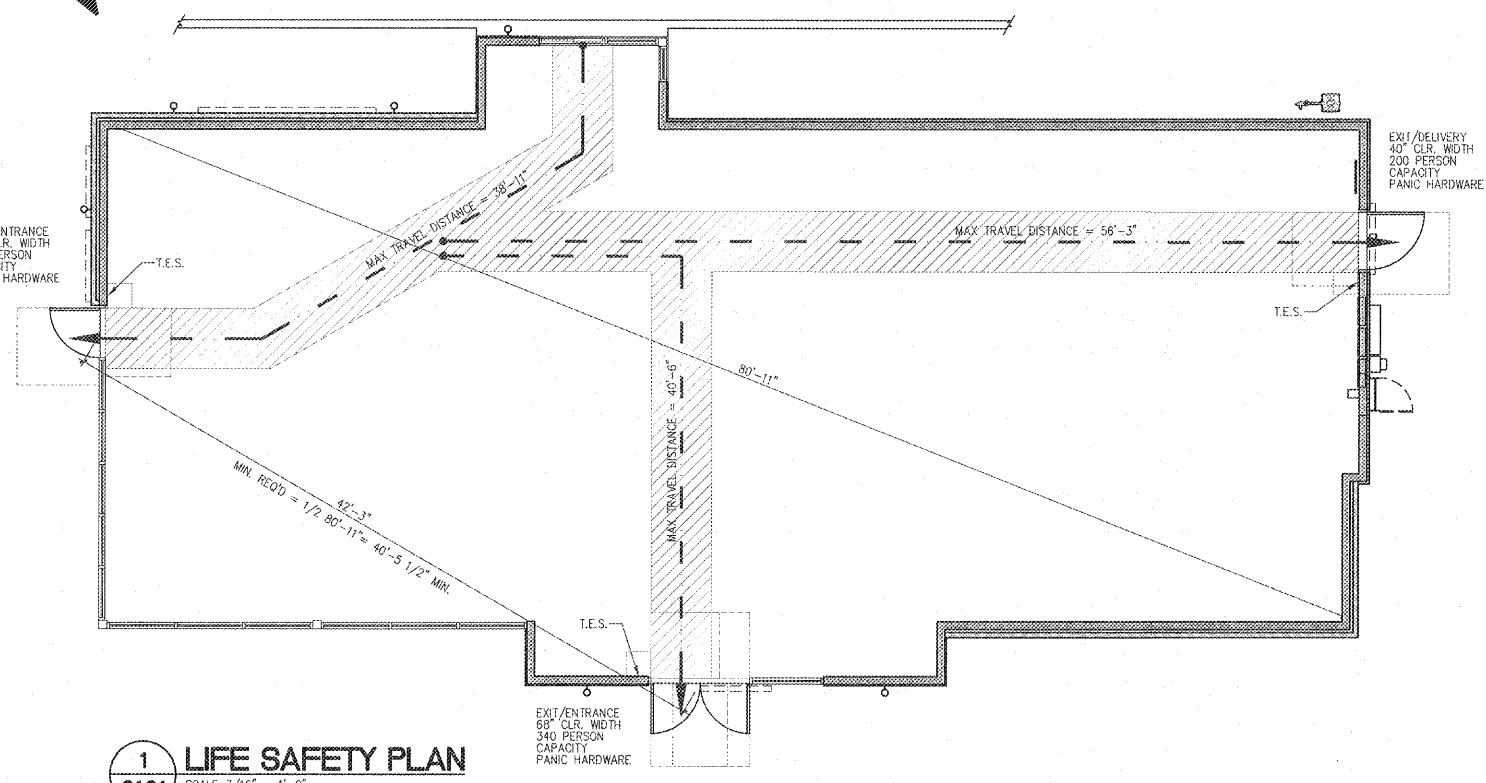


Digitally signed
 by Tammy Davis
 Date: 2019.04.11
 14:11:21 -04'00'

BY SQUARE FOOTAGE			TABLE 1004.1.1	
MARK	SPACE	S.F.	OCCUPANCY	
UNHATCHED	CIRCULATION / EXIT / TOILETS (NOT OCCUPIABLE)	0 S.F.	0	
	ASSEMBLY A2 - 1 PER 15 S.F.	2,404 S.F.	161	
TOTAL = 161				



2 OCCUPANCY PLAN
 G101 SCALE: 3/16" = 1'-0"



1 LIFE SAFETY PLAN
 G101 SCALE: 3/16" = 1'-0"

EXIT REQUIREMENTS

TRAVEL DISTANCE TO EXIT-- MAX ALLOWED= 200'-0" (ACTUAL= 193'-3")

EXITS REQUIRED = 2 (PLUS ADDITIONAL TO THE KITCHEN EXIT)

DISTANCE BETWEEN EXITS:
 REQUIRED BY CODE = 1/2 OF BUILDING DIMENSION 40'-5 1/2" MIN.

EXIT WIDTH (OVER OCCUPANT)
 161x0.2' = 32.2'
 161' THRU FRONT = 16.1'

PROVIDED:
 (1) 68"=68"
 (1) 34"=34"
 (1) 40"=40"

THRU FRONT = 68"

LEGEND

44" WIDE EGRESS PATH (OVER 50 OCCUPANTS)

EGRESS TRAVEL PATH

T.E.S. TACTILE EXIT SIGN - SEE DETAIL 3/G101

3 TACTILE EXIT SIGN
 G101 SCALE: N.T.S.

NOTE: SIGNAGE COLOR AND LETTERING SHALL COMPLY WITH ADA SECTION 703 AND LOCAL REQUIREMENTS.

CLERICAL ACCESS
 3" CLR.
 3" CLR.

EXIT
 SIGN SHALL BE DARK BROWN WITH WHITE LETTERS TO MATCH STOREFRONT
 3/4" ALL RAISED LETTERS
 FONT SHALL BE SANS SERIF
 CLEAR SHALL BE 5/8" MIN.
 SIGN TO BE NEXT TO DOOR
 48" MIN. TO THE BOTTOM OF LOWEST BRAILLE
 (60" MAX TO BOTTOM OF THE SIGN)
 SIGN AT REAR SHIPPING DOOR SHALL BE DARK BROWN WITH WHITE LETTERS

CLERICAL ACCESS
 3" CLR.
 3" CLR.

EXIT
 48" MIN.
 48" MIN. TO THE BOTTOM OF LOWEST BRAILLE
 (60" MAX TO BOTTOM OF THE SIGN)
 SIGN AT REAR SHIPPING DOOR SHALL BE DARK BROWN WITH WHITE LETTERS

CLERICAL ACCESS
 3" CLR.
 3" CLR.

EXIT
 48" MIN.
 48" MIN. TO THE BOTTOM OF LOWEST BRAILLE
 (60" MAX TO BOTTOM OF THE SIGN)
 SIGN AT REAR SHIPPING DOOR SHALL BE DARK BROWN WITH WHITE LETTERS

3 TACTILE EXIT SIGN
 G101 SCALE: N.T.S.

PROJECT: STARBUCKS SHELL BUILDING
 350 BLOWING ROCK BOULEVARD
 LENOR, NC 28645
 DRAWING: LIFE SAFETY PLAN

Revisions

REVISION DATE

PROJECT DATE
 03/26/2019

Drawn By
 MTP

Checked By
 ID