

Shane R.
Hamilton P.E.
CONSULTING ENGINEER
1717 N. Howard Avenue
Tampa, FL 33607 (813) 251-8848

OVERVIEW

TYPICALLY THE EXHAUST HOOD KIT PROVIDED BY FRANKE FOODSERVICE SYSTEMS WILL INCLUDE THE FOLLOWING:
 1. HOOD AND ACCESSORIES
 2. METAL FAB UL LISTED GREASE EXHAUST DUCT
 3. LOREN COOK EXHAUST FAN
 4. AMEREX FIRE SYSTEM

THE SHIPMENT FROM FRANKE FOODSERVICE SYSTEMS WILL INCLUDE THE FOLLOWING:
 1. HOOD
 2. UTILITY CHASE
 3. WALL FLASHING
 4. FACED PANELS
 5. CASCADE GREASE FILTERS
 6. METAL FAB GREASE EXHAUST DUCT

THE LOREN COOK EXHAUST FAN AND ROOF CURB IS DROPPED SHIPPED FROM THEIR FACTORY.

FIRE SUPPRESSION SYSTEM
 THE HOOD HAS BEEN FACTORY PRE-PIPED FOR AN AMEREX FIRE SUPPRESSION SYSTEM. THE LOCAL AMEREX DISTRIBUTOR WILL MAKE CONTACT WITH THE GENERAL CONTRACTOR TO SET UP THE INSTALLATION SCHEDULE. IF YOU HAVE NOT HEARD FROM THE DISTRIBUTOR, CONTACT:
 KAREN MAHN
 AMEREX CORPORATION, TRUSSVILLE, AL
 1-205-855-0720

AS AN OPTION, THE HOODS MAY BE PRE-PIPED FOR ANSUL FIRE SUPPRESSION SYSTEM.

CONTACT INFORMATION

ANSUL INSTALLATION QUESTIONS
 ANSUL, INC., MARINETTE, MI
 OFFICE PHONE: 1-800-882-8788

CONTACT INFORMATION

SHIPPING INFORMATION
 FOR ALL FRANKE HOOD PARTS - MARIA ALDAY
 FRANKE FOODSERVICE SYSTEMS, INC.
 600 AVANTON PARKWAY
 SMYRNA, TN 37167
 +1-615-462-4000

HOOD INSTALLATION QUESTIONS
 FRANKE FOODSERVICE SYSTEMS, INC. TECHNICAL SUPPORT
 PHONE - 1-800-637-2853 OPTION 2
 E-MAIL - FS-TS.US@FRANKE.COM

AMEREX INSTALLATION QUESTIONS
 THE HOOD IS FACTORY PRE-PIPED FOR AN AMEREX FIRE SUPPRESSION SYSTEM. THE LOCAL AMEREX DISTRIBUTOR WILL MAKE CONTACT WITH THE GENERAL CONTRACTOR TO SET UP THE INSTALLATION SCHEDULE. IF YOU HAVE NOT HEARD FROM THE DISTRIBUTOR, CONTACT:
 KAREN MAHN
 AMEREX CORPORATION, TRUSSVILLE, AL
 1-205-855-0720

LOREN COOK FAN INSTALLATION
 IF THERE ARE QUESTIONS OR ISSUES WITH THE LOREN COOK FAN INSTALLATION CONTACT:
 DAVID INY
 LOREN COOK COMPANY, SPRINGFIELD, MO
 1-417-888-6474

METAL-FAB DUCT INSTALLATION
 IF THERE ARE QUESTIONS OR ISSUES WITH THE METAL-FAB DUCT INSTALLATION CONTACT:
 METAL FAB, INC. WISCONSIN, WI
 COMMERCIAL SERVICE, COMMERCIAL VENT PRODUCTS
 1-800-835-2630

BROILER HOOD LISTING AND APPROVAL REFERENCE



INTERTEK TESTING SERVICES, INC.

BROILER HOOD IS ETL LISTED EXHAUST HOODS WITHOUT EXHAUST DAMPERS, REPORT NO. 3198208, TESTED UNDER IN ACCORDANCE WITH UNDERWRITERS LABORATORIES STANDARDS UL710 AND ULCS646.



NATIONAL FIRE PROTECTION ASSOCIATION

COMBINATION BROILER/OVEN HOOD MEETS ALL REQUIREMENTS OF NFPA-96 "STANDARD FOR VENTILATION CONTROL AND FIRE PROTECTION OF COMMERCIAL COOKING OPERATIONS"



NATIONAL SANITATION FOUNDATION

MEETS ALL REQUIREMENTS OF NSF STANDARD NUMBER 2 "FOOD SERVICE EQUIPMENT"

MECHANICAL CODES

MEETS ALL REQUIREMENTS OF THE UMC, SDC, SDC2 AND IBC.

DRAWING INFORMATION		
DATE	DESCRIPTION	BY
03-08-19	FOR CONSTRUCTION	KM

NCA
 CONSULTANTS / GROUP
 4585 140TH AVE. NORTH, SUITE #1001
 CLEARWATER, FLORIDA
 PHONE: (877) 530-0078
 CALL NCA MARKETING FOR PRICING
 NCA JOB# 19319

DATE:	
CHECKED BY:	
REVISION:	
RELEASED FOR CONSTRUCTION:	
DRAWN BY:	
DATE:	
NO:	



PREMIER KINGS, INC.
 5529 CARRIAGEWAY ROAD
 MONTICELLO, ALABAMA 36117
 PHONE: 1-800-451-4511
 LINSEY@BKBALABAMA.COM

2126 Morris Avenue
 Birmingham, AL 35203
 Phone (205) 322-7511
 Fax (205) 322-7778
 email info@hendonarchitects.com
 www.hendonarchitects.com

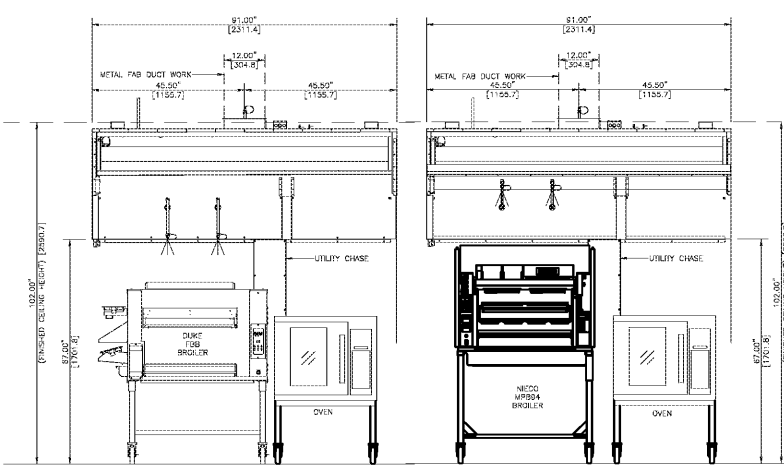
hendon architects, PC
 architecture • planning • interior design

SHANE HAMILTON, P.E.
 1717 N. HOWARD AVE., TAMPA, FL
 GEORGIA LICENSE #PE041331

REGISTERED PROFESSIONAL ENGINEER
 SHAHRIAN HAMILTON
 PE #19026.24

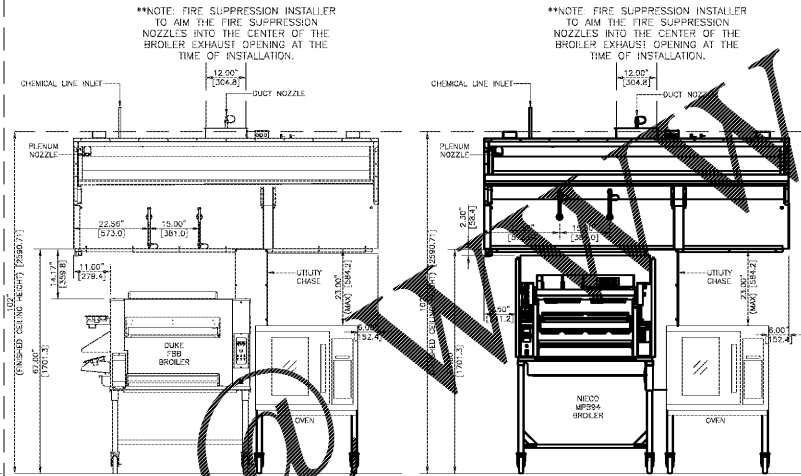
PROJECT # 18026.24
 NOVEMBER 2018 DESIGN RELEASE
BURGER KING RESTAURANT
 NEAR CORNER OF HWY 82 & JACKSON ST.
 NAHANTA, GA
HOOD DETAILS

1 GENERAL NOTES FOR INSTALLATION CREWS
 1 SCALE: NO SCALE



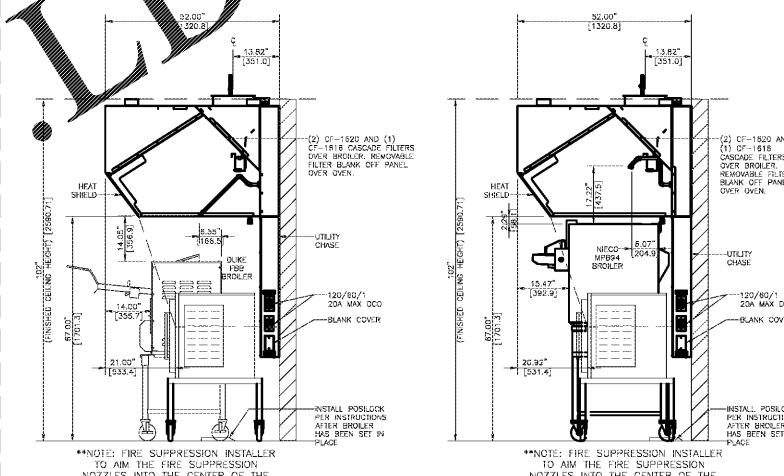
5 FRONT ELEVATIONS
 1 SCALE: NO SCALE

2 APPROVALS
 1 SCALE: NO SCALE

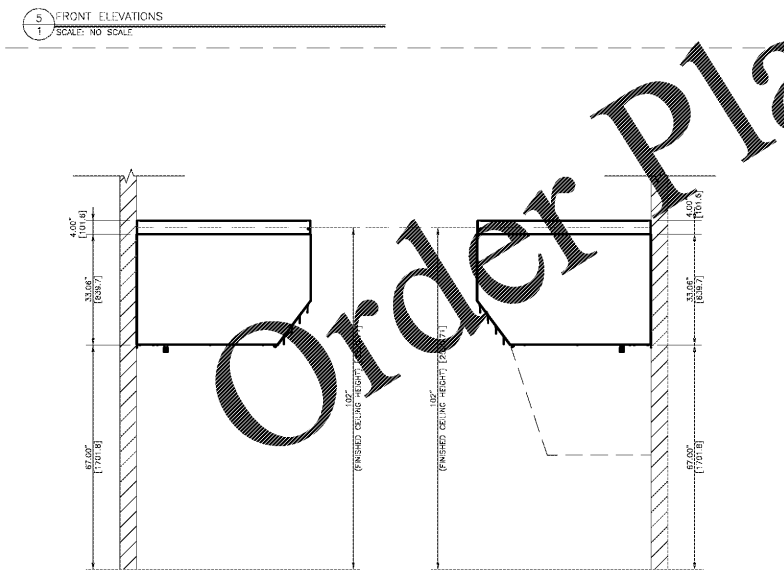


6 FRONT ELEVATION FIRE SUPPRESSION DETAILS
 1 SCALE: NO SCALE

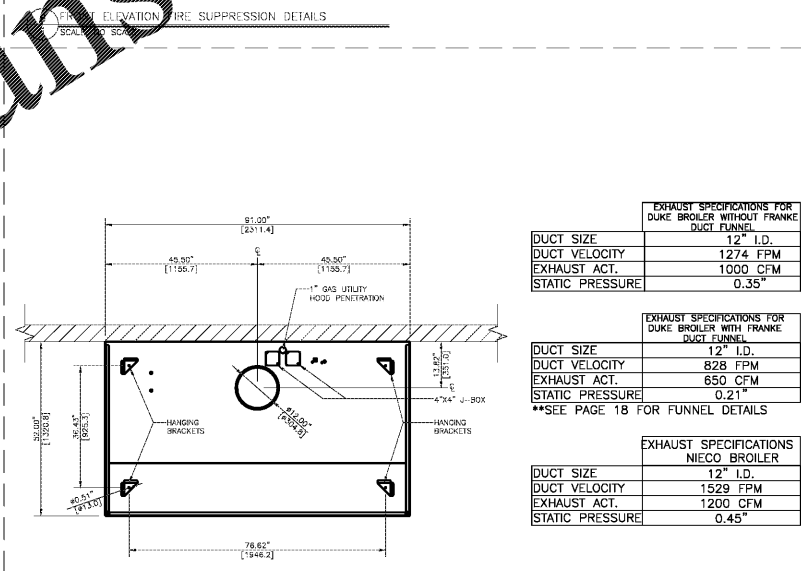
3 SPECIFICATIONS
 1 SCALE: NO SCALE



7 SECTION VIEWS
 1 SCALE: NO SCALE



8 RIGHT AND LEFT END VIEWS
 1 SCALE: NO SCALE

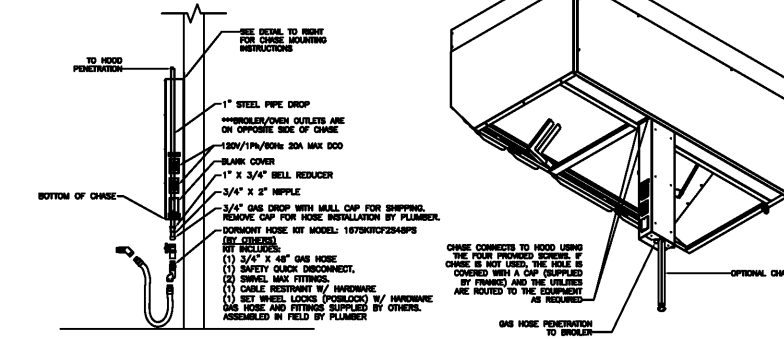


9 PLAN VIEW
 1 SCALE: NO SCALE

EXHAUST SPECIFICATIONS FOR DUKE BROILER WITHOUT FRANKE DUCT FUNNEL	
DUCT SIZE	12" I.D.
DUCT VELOCITY	1274 FPM
EXHAUST ACT.	1000 CFM
STATIC PRESSURE	0.35"

EXHAUST SPECIFICATIONS FOR DUKE BROILER WITH FRANKE DUCT FUNNEL	
DUCT SIZE	12" I.D.
DUCT VELOCITY	828 FPM
EXHAUST ACT.	650 CFM
STATIC PRESSURE	0.21"

EXHAUST SPECIFICATIONS FOR NEICO BROILER	
DUCT SIZE	12" I.D.
DUCT VELOCITY	1529 FPM
EXHAUST ACT.	1200 CFM
STATIC PRESSURE	0.45"



10 TYPICAL GAS AND ELECTRICAL CHASE DETAILS
 1 SCALE: NO SCALE

© Copyright 2019- Drawings, specifications, notes, database, computer files, field data, and reports as instruments of service prepared by the Design of Record. As instruments of services, these items remain the property of the Design of Record, who shall retain all statutory and other reserved rights, including the copyright thereto. Any use, reproduction or changes to these documents without written consent of NCA Consultants is a violation of federal copyright laws.