

**GENERAL ROOFING NOTES:**

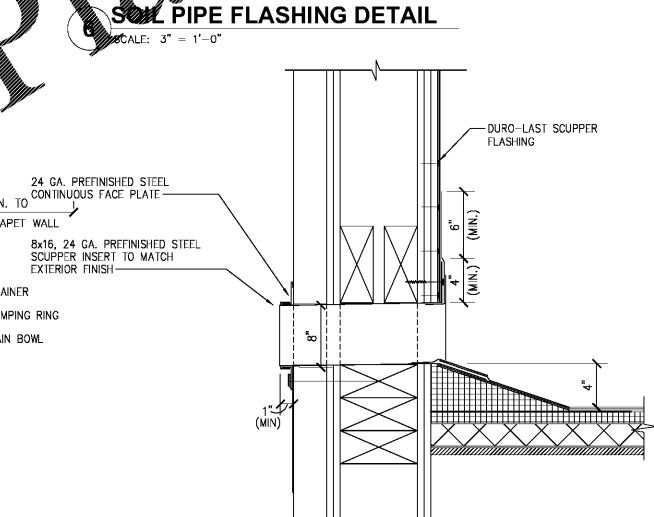
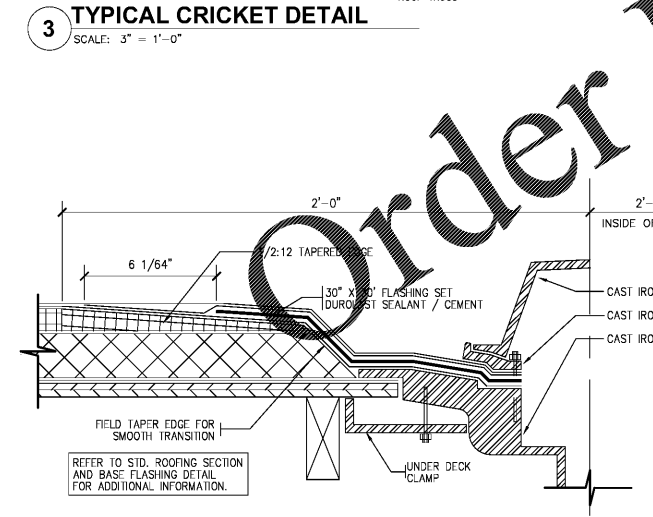
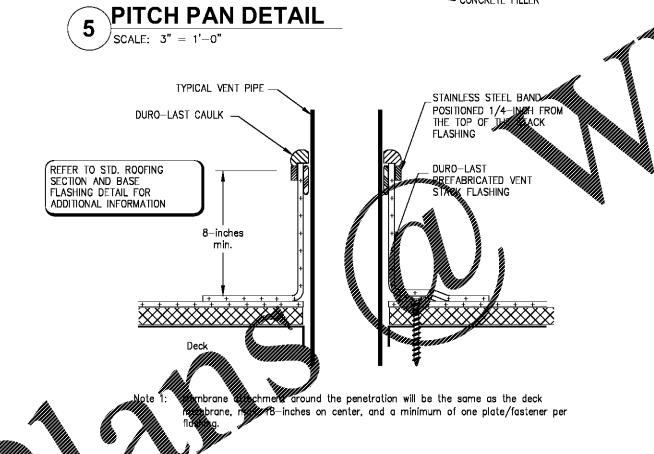
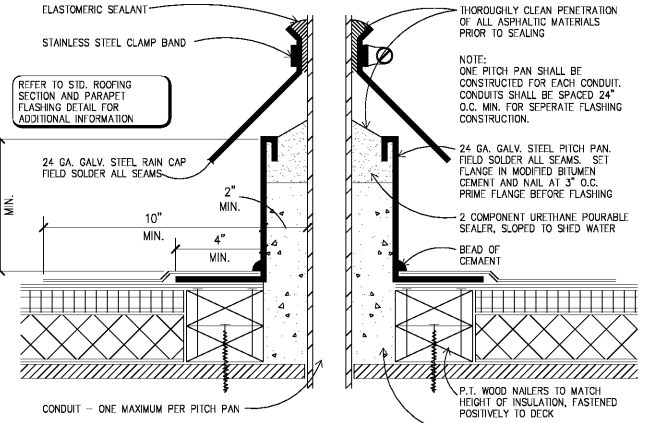
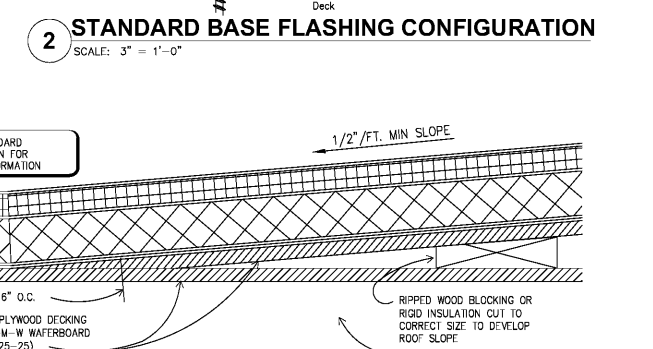
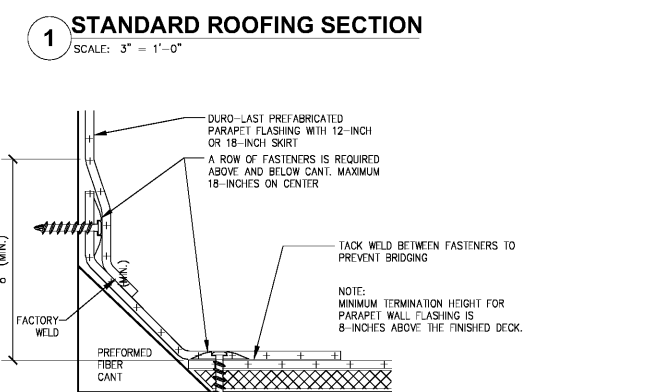
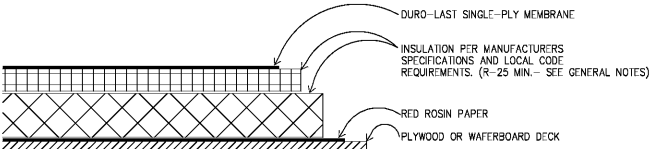
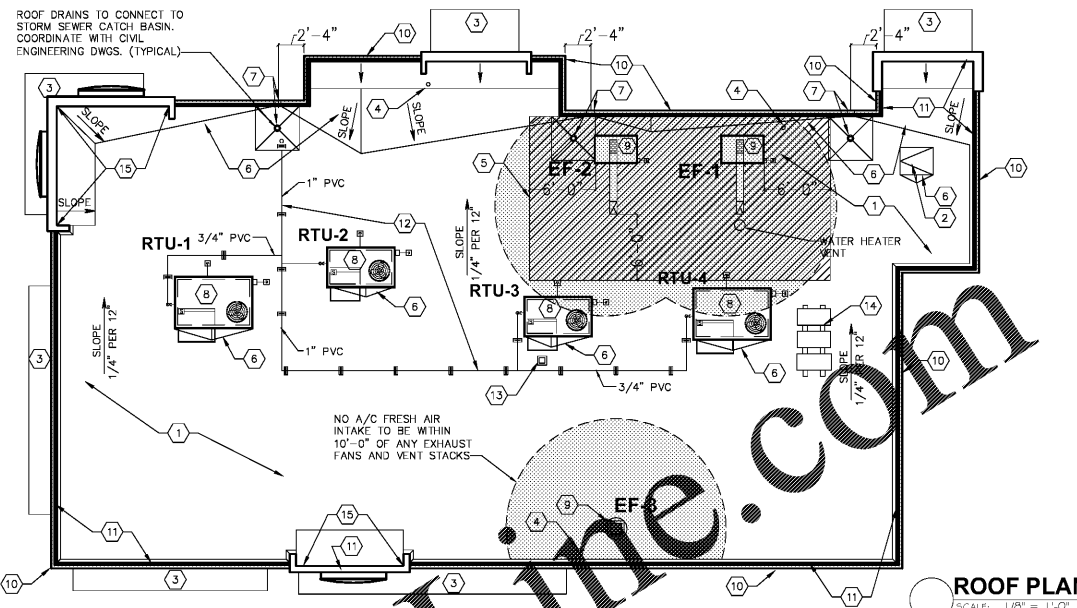
1. THIS ROOF SYSTEM TO BE DURA-LAST 40 MIL. MEMBRANE IN CONFORMANCE. INSULATION VALUE TO BE R-25 (MIN.) CONT. POLYISIO ABOVE THE ROOF DECKING.
2. ROOFING SUBCONTRACTOR TO COORDINATE LOCATION OF H.V.A.C. UNITS AND ROOF TOP ACCESSORIES WITH STRUCTURAL, MECHANICAL AND ELECTRICAL DRAWINGS FOR PLACEMENT AND TAPERED RIGID INSULATION BOARD LAY-OUT AND SUBSEQUENT INSTALLATION IN ORDER TO AVOID PONDING WATER CONDITIONS ATTRIBUTABLE TO BOARD LAY-OUT ISSUES.
3. ROOF SYSTEMS SPECIFIED SHALL BE APPLIED ONLY BY MANUFACTURER APPROVED APPLICATOR IN ORDER TO MEET GUARANTEE REQUIREMENTS.
4. COORDINATE LOCATION OF MECHANICAL UNITS WITH STRUCTURAL AND MECHANICAL DRAWINGS.
5. HVAC CONDENSATE LINES TO TERMINATE AT ROOF DRAIN OR AS REQUIRED BY LOCAL CODE.
6. REFER TO STRUCTURAL AND M-E-P DRAWINGS FOR ADDITIONAL INFORMATION.
7. ALL CURBS AND PIPE PENETRATIONS SHALL HAVE A MINIMUM OF 16" CLEAR FROM EACH OTHER FOR ROOF FLASHING PURPOSES. ALL EQUIPMENT SHALL HAVE A MINIMUM OF 16" CLEAR FROM ALL ADJACENT PARAPETS. ALL HVAC MOUNTED EQUIPMENT (DISCONNECT BOXES, GFCI, PIPE SUPPORTS) SHALL NOT BE CLOSER THAN 16" FROM EACH OTHER OR CURB. NO UNISTRUT PIPE SUPPORTS SHALL BE USED AS VERTICAL MEMBERS FOR MOUNTING EQUIPMENT TO ROOF SURFACE.
8. PONDING WATER IS DEFINED AS WATER THAT DOES NOT DRAIN OR DISSIPATE FROM THE ROOF WITHIN 48 HOURS AFTER PRECIPITATION.
9. CONTRACTOR SHALL "SUGAR-IN" ALL ASPHALT, BLEED-OUT ON PILES WITH ADDITIONAL GRANULITES TO MATCH EXISTING COLORATION OF THE MINERAL SURFACE CAP SHEET.
10. ALL FLASHING CEMENTS, ASPHALTS, PRODUCTS AND ACCESSORIES SHALL BE APPROVED BY ROOFING MANUFACTURER WITH THE MANUFACTURER'S BRAND. ALL ASPHALTS SHALL BE AMERICAN MANUFACTURED PRODUCTS.

**KEYED NOTES:**

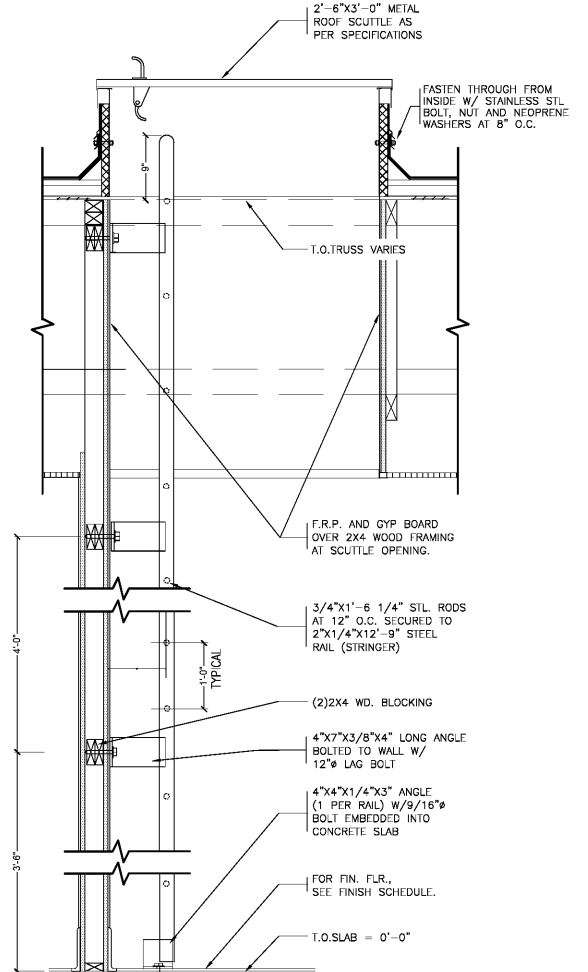
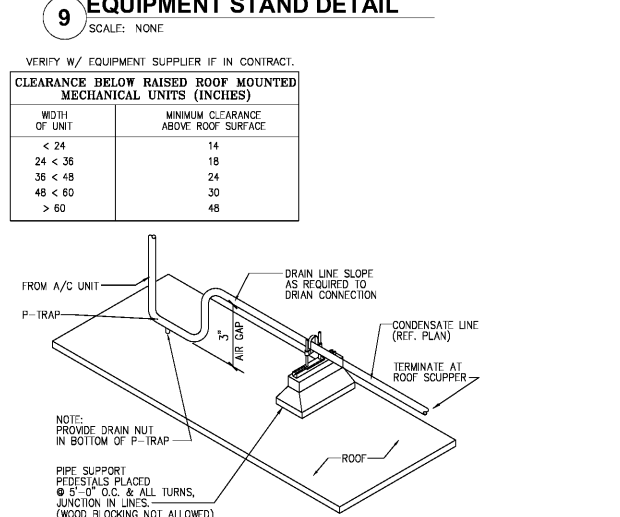
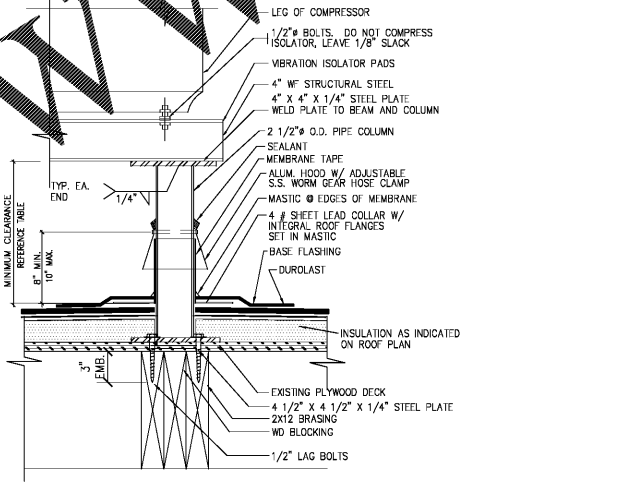
1. SINGLE-PLY DURA-LAST WHITE MEMBRANE ROOF.
2. ROOF ACCESS SCUTTLE, REFERENCE DETAIL, THIS SHEET.
3. PREFABRICATED METAL CANOPY, REFERENCE SHEETS A-7, A-8.
4. VENT THROUGH ROOF - PROVIDE PREFABRICATED DURA-LAST VENT FLASHING FOR ALL VENTS AND PIPE PENETRATIONS, REFERENCE DETAIL #6, THIS SHEET.
5. INSTALL MODIFIED BITUMEN SACRIFICE SHEET AS SPECIFIED AT KITCHEN EXHAUST.
6. ROOF CRICKET WITH SLOPE TO MATCH ROOF, REFER TO DETAIL #3, THIS SHEET.
7. ROOF DRAIN AND OVERFLOW ROOF SCUPPERS - REFER TO DETAILS #4 AND #7 THIS SHEET.
8. ROOFTOP AIR CONDITIONING UNIT - REFER TO MECHANICAL PLANS.
9. EXHAUST FAN - REFER TO MECHANICAL PLANS.
10. ILLUMINATED PARAPET LIGHT BAND.
11. METAL COPING.
12. PVC CONDENSATE DRAIN (SIZE AS SHOWN) WITH PIPE SUPPORTS EVERY 5'-0". TERMINATE CONDENSATE DRAIN AT PRIMARY SCUPPER. REFER TO DETAIL #8, THIS SHEET FOR ADDITIONAL INFORMATION.
13. PROVIDE PITCH PAN WITH CONDUIT OVER OFFICE FOR SATELLITE DISH/ANTENNA.
14. EQUIPMENT STAND FOR WALK-IN BOX COOLER/FREEZER CONDENSERS AND ICE MACHINE CONDENSER. REFER TO EQUIPMENT STAND DETAIL, THIS SHEET.
15. LOCATION OF TOWER MOUNTED FLAG-POLE - SEE DETAIL A-9 - GC TO PROVIDE.

**GENERAL NOTES:**

- A. THE ROOF STRUCTURE SHALL NOT BE USED FOR STOCKPILING OF EQUIPMENT OR MATERIALS UNLESS APPROVED BY THE ARCHITECT, STRUCTURAL ENGINEER AND THE JOIST MANUFACTURER.
- B. THE ROOFING SYSTEM SHALL BE AS PER DRAWINGS AND PER MANUFACTURER'S SPECIFICATIONS.
- C. COORDINATE ROOF ELEVATIONS WITH STRUCTURAL DRAWINGS. REFER TO SPECIFICATION SHEET FOR ROOF RELATED ITEMS, INCLUDING GUARANTEES, CURBS, FLASHING, ETC.



**NOTE**  
ALL ROOFING DETAILS TO BE VERIFIED AND COORDINATED WITH MANUFACTURER'S SPECIFICATIONS AND WARRANTIES.



Order Plans @ WWW.WJDILLINE.COM

DRAWN BY: MRW  
 NO. DATE  
 04-11-19  
 CHECKED BY: ENH, MRW  
 DATE: 04.11.19  
 REVISION  
 RELEASED FOR CONSTRUCTION

2126 Morris Avenue  
 Birmingham, AL 35203  
 Phone: (205) 329-7251  
 Fax: (205) 329-7252  
 www.jamesm.huckestein.com

**James M. Huckestein**  
 architect, AIA  
 architecture • planning • interior design

PROJECT: #1802624  
 R00-60 TALL 20/20 IMAGE: NOVEMBER 2018 DESIGN RELEASE  
**BURGER KING RESTAURANT**  
 NEAR CORNER OF HWY 62 & JACKSON ST.  
 MAHANTA, GA  
 04/11/19

ROOF PLAN AND DETAILS  
**A-5**