

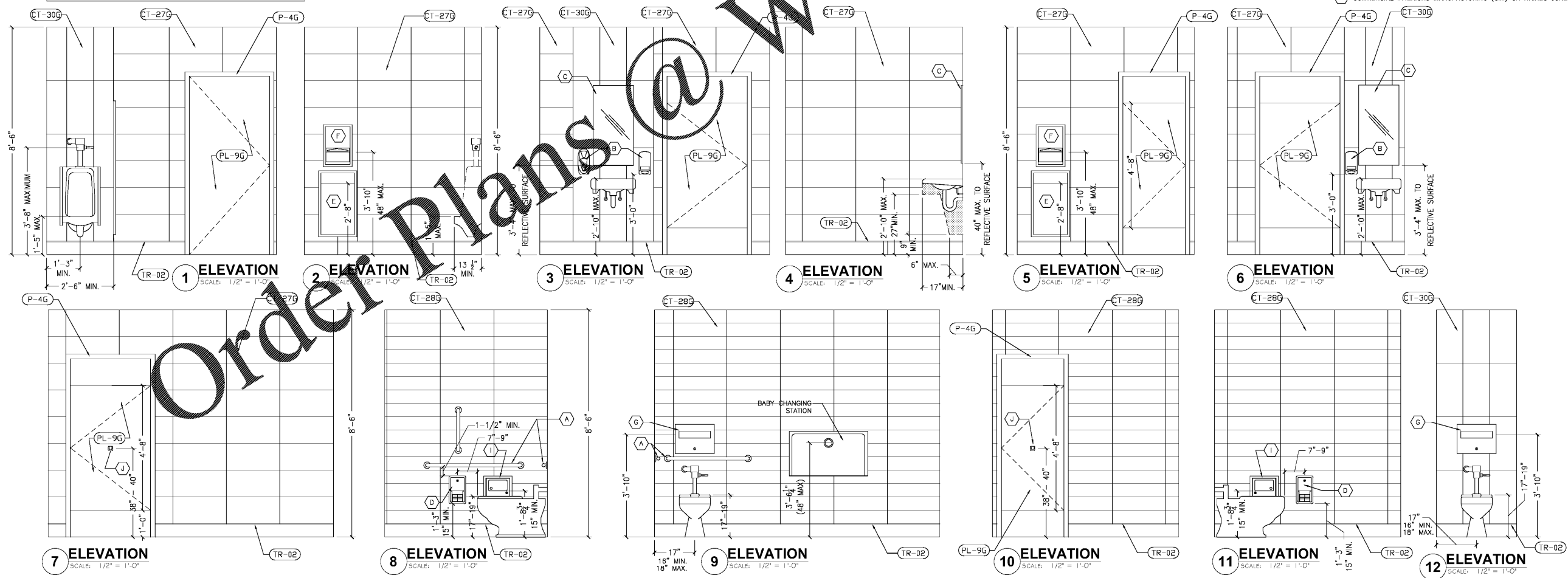
GENERAL NOTES:

- A. FOR INTERIOR FINISHES, REFER TO INTERIOR DECOR SHEETS.
- B. PLUMBING FIXTURES TO BE PROVIDED BY THE GENERAL CONTRACTOR.
- C. ALL PLUMBING FIXTURES, FAUCETS AND ACCESSORIES TO BE ADA COMPLIANT
- D. ALL EXPOSED PIPING UNDER LAVATORIES TO BE INSULATED TO PROTECT FROM CONTACT. THERE SHALL BE NO SHARP OR ABRASIVE SURFACES UNDER LAVATORIES.

RESTROOM / KITCHEN ACCESSORIES:

- A. GRAB BARS: BOBRICK 250 LBF. MINIMUM 33" MIN. TO 36" MAX. HEIGHT TO THE TOP OF THE GRIPPING SURFACE. PROVIDE THE REQUIRED QUANTITY AND LENGTH AS INDICATED ON THE DRAWINGS OR AS REQUIRED BY THE GOVERNING CODE. THE BAR SHALL BE 1-1/2" IN DIAMETER AND MOUNTED WITH 1-1/2" CLEARANCE FROM THE WALL.
- B. WALL MOUNTED SOAP DISPENSER AND HAND SANITIZER DISPENSER (36" MAX. HEIGHT) SUPPLIED BY "ECOLAB" AND INSTALLED BY THE G.C. NOTE: SOAP AND HAND SANITIZER DISPENSERS TO BE PROVIDED AT EACH KITCHEN HANDSINK.
- C. MIRROR: (BOTTOM OF REFLECTIVE SURFACE AT 40" MAXIMUM HEIGHT) MODEL B-165-1836 (18"x36") STAINLESS STEEL PANEL FRAME MIRROR WITH THEFT RESISTANT SCREWS BY BOBRICK OR APPROXIMATE EQUIVALENT.
- D. TOILET PAPER HOLDER: OPTION 1: BOBRICK B-3888, SUPPLIER - HAINES JONES & CADBURY; OPTION 2: 9" TWIN JUMBO MODEL #250 BY FORTI, AMERICAN CORPORATION.
- E. PAPER WASTE RECEPTACLE: REQUIRED MODEL B-3644 AS MANUFACTURED BY BOBRICK OR APPROXIMATE EQUIVALENT. (MINIMUM OPENING 17-3/16"W x 30-5/8"H x 8-1/8"D MIN.)
- F. REQUIRED PAPER TOWEL DISPENSER: BOBRICK B-359 SUPPLIED BY HAINES JONES & CADBURY AND INSTALLED BY THE G.C. OPTIONAL: ADDITION TO PAPER TOWEL DISPENSER: SENSOR HAND DRYER: ASI ROVAL SERIES AUTOMATIC TOUCH-FREE MODEL: ASI ROVAL 20199. NOTE: DRYER TO BE INSTALLED AT A MAXIMUM HEIGHT OF 48" FROM FINISH FLOOR ELEVATION TO TOP OF SENSOR OR PER ADA REQUIREMENTS. NOTE: PROVIDE PAPER TOWEL DISPENSER "SAN JAMAR" MODEL #1-1490BK AT EACH HAND SINK IN KITCHEN.
- G. TOILET SEAT COVER DISPENSER: BOBRICK B-3013, SUPPLIER - HAINES JONES & CADBURY
- H. URINAL SCREEN: (OPTION 1) NEVAMAR HK00171 COLOR: VENERABLE OLD OAK (OPTION 2) BOBRICK 1080/1180 DURALINE SERIES #C0-09 COLOR: BLACK
- I. SANITARY NAPKIN DISPOSAL: BOBRICK B-353, RECESSED.
- J. COAT HOOK: BOBRICK MODEL B-6717 TO BE MOUNTED ON INSIDE OF EACH RESTROOM DOOR FOR SINGLE OCCUPANCY RESTROOMS AND EACH RESTROOM STALL DOOR FOR MULTIPLE OCCUPANCY RESTROOMS. MOUNT AT 38"-40" A.F.F. FOR ADA ACCESSIBLE LOCATIONS AND AT 48" A.F.F. MAXIMUM FOR NON-ADA ACCESSIBLE LOCATIONS.
- K. BABY CHANGING STATION: KOALA KARE #KB110-SSWM (HORIZONTAL) WALL MOUNTED OR #KB200-01 (HORIZONTAL) WALL MOUNTED IN GREY. SANITARY BED LINERS FOR BABY CHANGING STATION: KOALA KARE #KB150-99. NOTE: CHANGING STATION OPTION TO COMPLY WITH ALL ACCESSIBILITY REQUIREMENTS. PROVIDE BLOCKING AS REQUIRED FOR STATION SUPPORT.
- L. LAVATORY FAUCET: WATERFRONT MODEL: 30098B SINGLE LEVER HANDLE LAVATORY FAUCET, CHROME-PLATED FINISH
- M. WATER CLOSET: AMERICAN STANDARD - MADERA FLOWISE 15" HEIGHT ELONGATED FLUSHOMETER TOILET, SUPPLIER - HAINES JONES & CADBURY
- N. WATER CLOSET- ADA: AMERICAN STANDARD - MADERA FLOWISE 16 1/2" HEIGHT 1.6 GPF FLUSHOMETER TOILET SYSTEM, SUPPLIER - HAINES JONES & CADBURY
- O. URINAL- ADA: AMERICAN STANDARD - WASHBROOK FLOWISE UNIVERSAL URINAL - HAINES JONES & CADBURY
- P. LAVATORY: CUSTOM THROUGH SINK "GLACIER WHITE" COMMERCIAL INTERIORS MANUFACTURING (CIM) OR HAINES JONES & CADBURY

NOTE:
REFER TO 20/20 GARDEN GRILL DECOR GUIDELINES FOUND AT DESIGNWITHBK.COM (INTERIOR DESIGN GUIDELINES) FOR REQUIRED RESTROOM GRAPHICS.



Order Plans @

WWW.LDILine.com

DATE: 04.11.19
DRAWN BY: MRW
CHECKED BY: ENR, MRW
REVISION
RELEASED FOR CONSTRUCTION

PREMIER KINGS, INC.
5529 CARMICHAEL ROAD
MONTGOMERY, ALABAMA 36117
PHONE: 205.833.1111
FAX: 205.833.1112
WWW.BK.COM
LINES@BK.COM

2126 Morris Avenue
Birmingham, AL 35203
Phone: (205) 329-1751
Fax: (205) 329-1752
www.jamesm.huckestein.com

James M. huckestein architect AIA
architecture • planning • interior design

04/11/19

PROJECT: #18026.24
RCC-60 TALL 20/20 IMAGE: NOVEMBER 2018 DESIGN RELEASE
BURGER KING RESTAURANT
NEAR CORNER OF HWY 82 & JACKSON ST.
MAHANTA, GA

RESTROOM ADA PLANS & INTERIOR ELEVATIONS

A-3.1