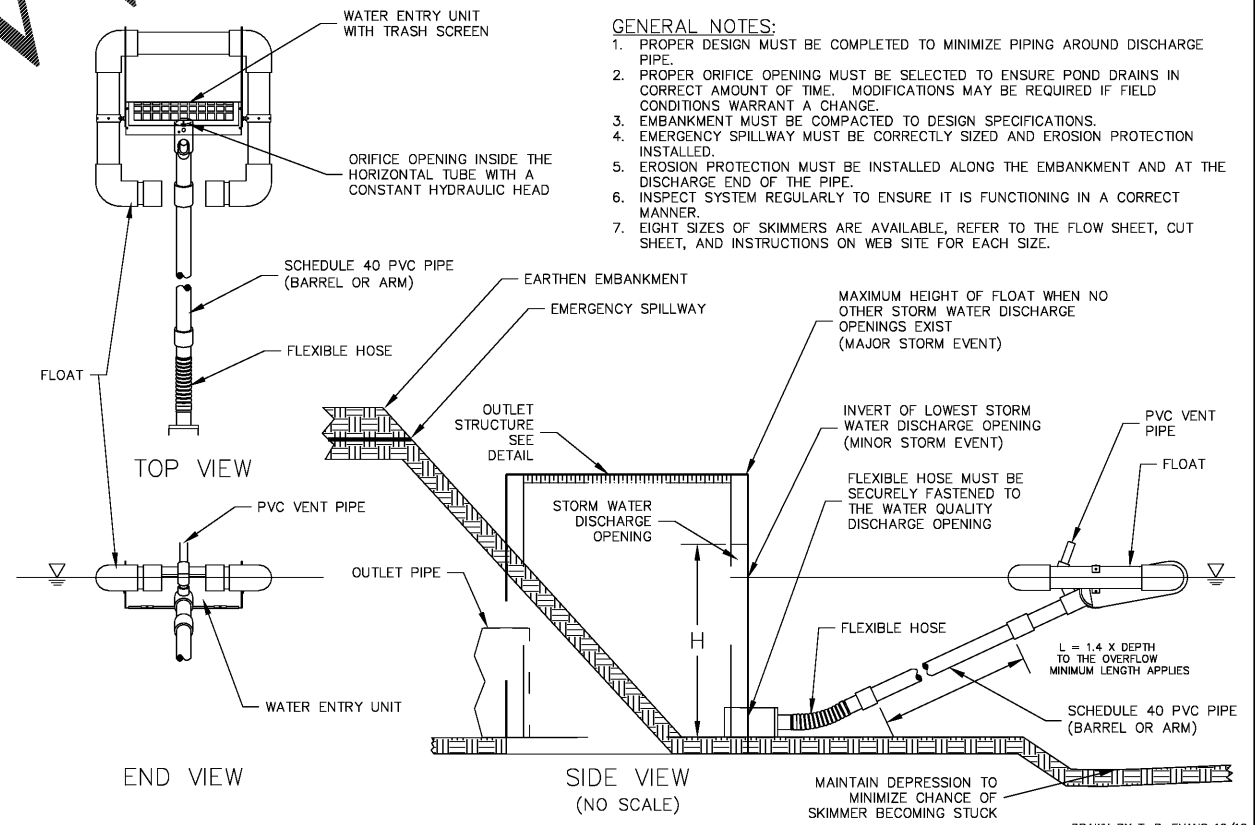


Order Plans @ WWW.LDILine.com

- SKIMMER NOTES:**
1. SKIMMER TO BE INSTALLED DURING INITIAL PHASE AND MAINTAINED THROUGHOUT CONSTRUCTION TO INCLUDE CONSTRUCTION OF HOME SITES.
 2. SITE MUST HAVE 100% STAND OF GRASS BEFORE SKIMMER IS REMOVED.
 3. SITE MUST BE INSPECTED BY ENGINEER BEFORE SKIMMER IS REMOVED.
 4. INSTALL HALF ROUND PIPE AND STONE AFTER SKIMMER IS REMOVED.

SKIMMER SIZING
 POLLUTION CONTROL VOLUME OR BASIN VOLUME = 10,265CF
 TIME TO DRAIN: 3 DAYS
 SKIMMER SIZE: 2-1/2"
 ORIFICE DIAMETER: 1.9" DIAMETER
 BASED ON FAIRCLOTH SKIMMERS



- GENERAL NOTES:**
1. PROPER DESIGN MUST BE COMPLETED TO MINIMIZE PIPING AROUND DISCHARGE PIPE.
 2. PROPER ORIFICE OPENING MUST BE SELECTED TO ENSURE POND DRAINS IN CORRECT AMOUNT OF TIME. MODIFICATIONS MAY BE REQUIRED IF FIELD CONDITIONS WARRANT A CHANGE.
 3. EMBANKMENT MUST BE COMPACTED TO DESIGN SPECIFICATIONS.
 4. EMERGENCY SPILLWAY MUST BE CORRECTLY SIZED AND EROSION PROTECTION INSTALLED.
 5. EROSION PROTECTION MUST BE INSTALLED ALONG THE EMBANKMENT AND AT THE DISCHARGE END OF THE PIPE.
 6. INSPECT SYSTEM REGULARLY TO ENSURE IT IS FUNCTIONING IN A CORRECT MANNER.
 7. EIGHT SIZES OF SKIMMERS ARE AVAILABLE, REFER TO THE FLOW SHEET, CUT SHEET, AND INSTRUCTIONS ON WEB SITE FOR EACH SIZE.

FAIRCLOTH SKIMMER® DISCHARGE SYSTEM WITH OUTLET STRUCTURE

J. W. FAIRCLOTH & SON INC.
 WWW.FAIRCLOTHSKIMMER.COM
 TELEPHONE: (919) 732-1244
 FAX: (919) 732-1266
 EMAIL: WARREN@FAIRCLOTHSKIMMER.COM

FAIRCLOTH SKIMMER DISCHARGE SYSTEM WITH OUTLET STRUCTURE
 SCALE: N.T.S.



THIS DRAWING IS THE PROPERTY OF T. R. LONG ENGINEERING, P.C. AND MAY NOT BE REPRODUCED, COPIED, OR TRANSMITTED IN ANY MANNER WITHOUT THE EXPRESS WRITTEN PERMISSION OF T. R. LONG ENGINEERING, P.C.
 THE CONTRACTOR SHALL VERIFY ALL DIMENSIONS CONTAINED WITHIN THIS SET OF DOCUMENTS AND SHALL REPORT ANY DISCREPANCIES TO T. R. LONG ENGINEERING, P.C. FOR IMMEDIATE RESOLUTION.



T. R. Long Engineering, P.C.
 SAVANNAH
 306 Commercial Drive
 Savannah, Georgia 31406
 Office: (912) 335-1046
 HINESVILLE
 114 North Commerce St.
 Hinesville, Georgia 31313
 Office: (912) 368-5664
 www.trlongeng.com

SPECIFIC DEVELOPMENT
 PLAN FOR BURGER KING
 NAHANTA, GEORGIA

SHEET NAME:
 SWPPP
 DETAILS

REVISIONS:

1.	
2.	
3.	
4.	
5.	
6.	
7.	
8.	
9.	
10.	

INITIAL DATE: 4/01/2019
 DRAWN BY: BDP
 CHECKED BY: TRL
 PROJECT #: 2019-147

SHEET NUMBER:

EC-09